

U. S. DEPARTMENT OF THE INTERIOR  
GEOLOGICAL SURVEY  
N. M. OIL CONS. COMMISSION  
P. O. BOX 88240  
HOBBS, NEW MEXICOSUBMIT IN TRIPPLICATE\*  
(Other instruction on  
reverse side)Form approved.  
Budget Bureau No. 42-R1425.

## APPLICATION FOR PERMIT TO DRILL, DEEPEN, OR PLUG BACK

## 1a. TYPE OF WORK

DRILL ☒DEEPEN ☐PLUG BACK ☐

## b. TYPE OF WELL

OIL  
WELL ☒GAS  
WELL ☐OTHER ☐SINGLE  
ZONE ☒MULTIPLE  
ZONE ☐

## 2. NAME OF OPERATOR

CONOCO INC.

## 3. ADDRESS OF OPERATOR

P. O. Box 460, Hobbs, N.M. 88240

## 4. LOCATION OF WELL (Report location clearly and in accordance with any State requirements.\*)

At surface 1880' FNL &amp; 660' FWL

E-SW-NW

At proposed prod. zone

## 14. DISTANCE IN MILES AND DIRECTION FROM NEAREST TOWN OR POST OFFICE\*

## 16. DISTANCE FROM PROPOSED\*

LOCATION TO NEAREST  
PROPERTY OR LEASE LINE, FT.  
(Also to nearest drlg. unit line, if any)

## 16. NO. OF ACRES IN LEASE

18. DISTANCE FROM PROPOSED LOCATION\*  
TO NEAREST WELL, DRILLING, COMPLETED,  
OR APPLIED FOR, ON THIS LEASE, FT.

## 19. PROPOSED DEPTH

3800'

## 21. ELEVATIONS (Show whether DF, RT, GR, etc.)

3534' GR(est)

17. NO. OF ACRES ASSIGNED  
TO THIS WELL

40

## 20. ROTARY OR CABLE TOOLS

Rotary

## 22. APPROX. DATE WORK WILL START\*

March 10, 1982

## PROPOSED CASING AND CEMENTING PROGRAM

SIZE OF HOLE	SIZE OF CASING	WEIGHT PER FOOT	SETTING DEPTH	QUANTITY OF CEMENT
12 1/4"	8 5/8"	24 #	1360'	650sx - circulate
7 1/8"	5 1/2"	15.5 #	3800'	800sx - circulate

It is proposed to drill a straight hole to a TD of 3800' and complete it as a Queen oil well.

See attachments for 10 point well plan and 13 point Surface Use Plan.

JAN 27 1982

OIL & GAS  
U.S. GEOLOGICAL SURVEY  
ROSOWELL, NEW MEXICO

IN ABOVE SPACE DESCRIBE PROPOSED PROGRAM: If proposal is to deepen or plug back, give data on present productive zone and proposed new productive zone. If proposal is to drill or deepen directionally, give pertinent data on subsurface locations and measured and true vertical depths. Give blowout preventer program, if any.

24.

SIGNED Wm A. Butler

TITLE Administrative Supervisor

DATE 1/25/82

(This space for Federal or State office use)

PERMIT NO.

APPROVED

APPROVED BY

CONDITIONS OF APPROVAL, IF ANY

FEB - 8 1982

JAMES A. GILLHAM

DISTRICT SUPERVISOR

APPROVAL DATE

GENERAL REQUIREMENTS AND

SPECIAL STIPULATIONS

ATTACHED

DATE

See Instructions On Reverse Side

556  
33A12  
4K1  
WYU4

NEW MEXICO OIL CONSERVATION COMMISSION  
WELL LOCATION AND ACREAGE DEDICATION PLAT

Form O-112  
Supersedes O-128  
10-1-66

All distances must be from the outer boundaries of the Section

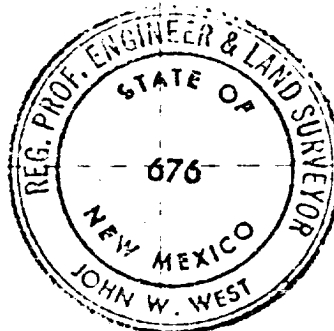
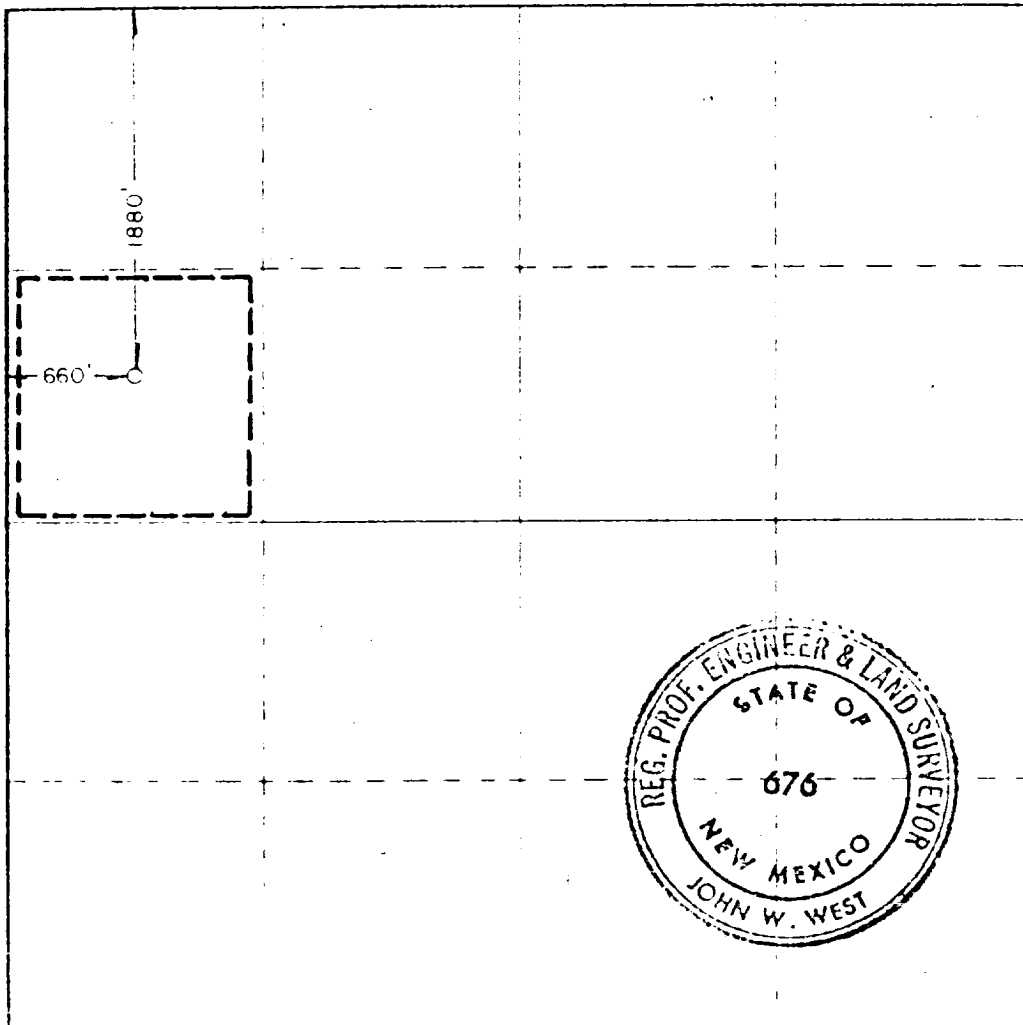
Conoco, Inc.		Lease SEMU		Well No. 128	
E	24	20 South	37 East	Lea	
1880	north	660	west		
3533.6'	Queen	Eumont Queen	40		

1. Outline the acreage dedicated to the subject well by colored pencil or hatchure marks on the plat below.
2. If more than one lease is dedicated to the well, outline each and identify the ownership thereof (both as to working interest and royalty).
3. If more than one lease of different ownership is dedicated to the well, have the interests of all owners been consolidated by communitization, unitization, force-pooling, etc?

☐ Yes ☐ No If answer is "yes," type of consolidation \_\_\_\_\_

If answer is "no" list the owners and tract descriptions which have actually been consolidated (use reverse side of this form if necessary.) \_\_\_\_\_

No allowance will be assigned to the well until all interests have been consolidated (by communitization, unitization, force-pooling, or otherwise) or until a non-standard unit, eliminating such interests, has been approved by the Commission.



CERTIFICATION

I hereby certify that the information contained herein is true and complete to the best of my knowledge and belief.

*John A. Butterfield*  
Administrative Supervisor  
Conoco Inc.  
1/25/82

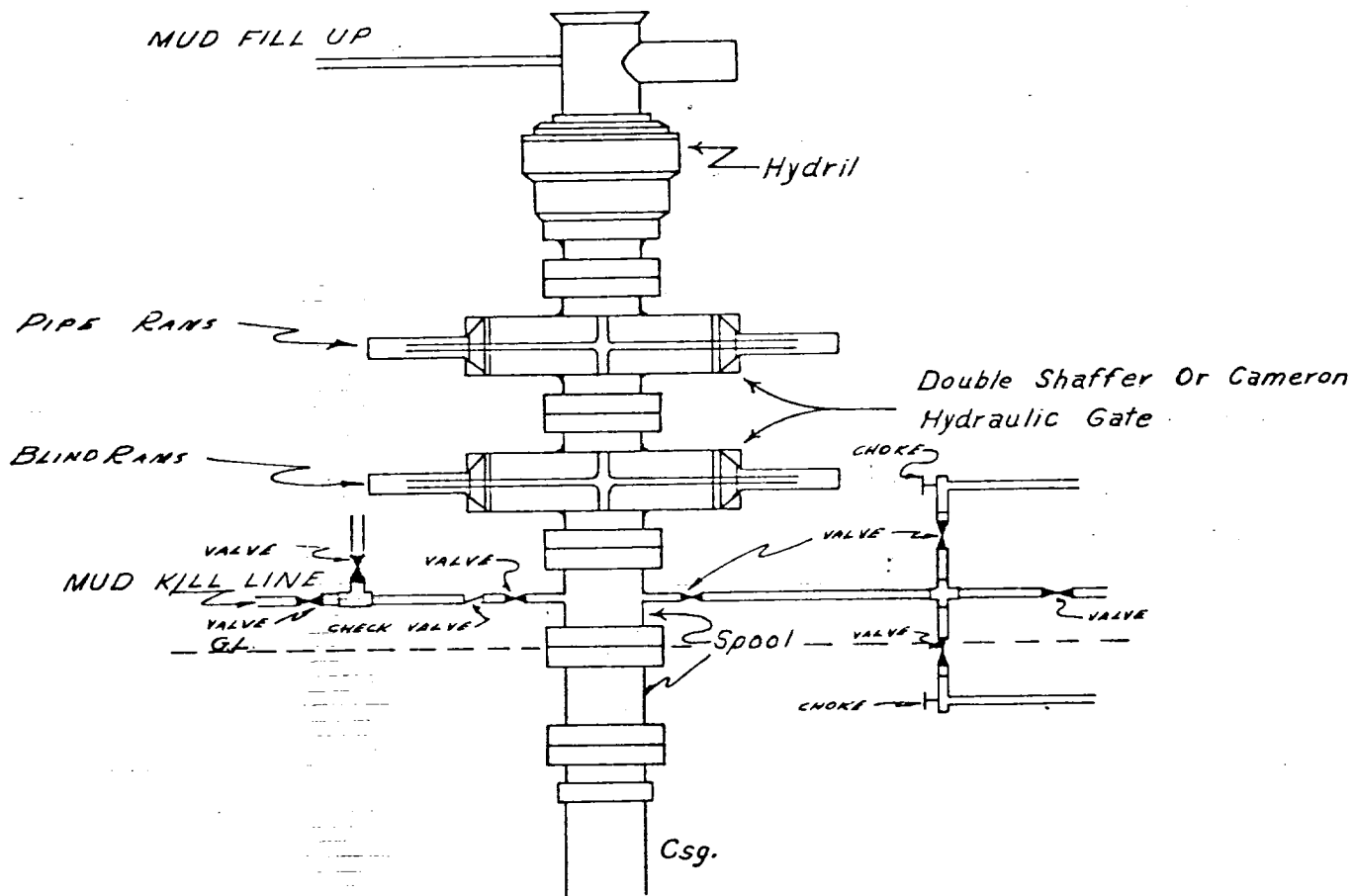
I hereby certify that the well location shown on this plat was plotted from field notes of actual surveys made by me or under my supervision, and that the same is true and correct to the best of my knowledge and belief.

1-8-82

*John W. West*

JOHN W. WEST 676  
PATRICK A. ROMERO 6668  
Randy J. Eason 3232

CONTINENTAL OIL COMPANY  
Blow-out Preventer Specifications



API SERIES 900

NOTE:

Manual and Hydraulic controls with closing unit no less than 75' from well head.  
Remote controls on rig floor.

*DUE TO SUBSTRUCTURE CLEARANCE,  
HYDRIL MAY OR MAY NOT BE USED.*