

N. M. OIL CONS. COMMISSION

P. O. BOX 3

HOBBS, NEW MEXICO 88240

UNITED STATES

DEPARTMENT OF THE INTERIOR

GEOLOGICAL SURVEY

SUBMIT IN TRIPLIC.

(Other instructions on reverse side)

Form approved.
Budget Bureau No. 42-R1425.

30-025-27750

APPLICATION FOR PERMIT TO DRILL, DEEPEN, OR PLUG BACK

1a. TYPE OF WORK

DRILL ☒

DEEPEN ☐

PLUG BACK ☐

b. TYPE OF WELL

OIL WELL ☒

GAS WELL ☐

OTHER

SINGLE ZONE ☐

MULTIPLE ZONE ☐

2. NAME OF OPERATOR

Daniel A. McNabb

3. ADDRESS OF OPERATOR

P.O. Box 1320 Hobbs, New Mexico 88240

4. LOCATION OF WELL (Report location clearly and in accordance with any State requirements.)*
At surface

1980 FSL 330 FEL Section 14, T-19-S, R-33-E, Lea County,
At proposed prod. zone New Mexico
Yates- 7 Rivers

14. DISTANCE IN MILES AND DIRECTION FROM NEAREST TOWN OR POST OFFICE*

35 miles west-southwest of Hobbs

15. DISTANCE FROM PROPOSED*

LOCATION TO NEAREST
PROPERTY OR LEASE LINE, FT.
(Also to nearest drlg. unit line, if any)

330'

16. NO. OF ACRES IN LEASE

640

17. NO. OF ACRES ASSIGNED
TO THIS WELL

40

18. DISTANCE FROM PROPOSED LOCATION*

TO NEAREST WELL, DRILLING, COMPLETED,
OR APPLIED FOR, ON THIS LEASE, FT.

4,290'

19. PROPOSED DEPTH

3,900'

20. ROTARY OR CABLE TOOLS

Rotary

21. ELEVATIONS (Show whether DF, RT, GR, etc.)

3,638.1' GR

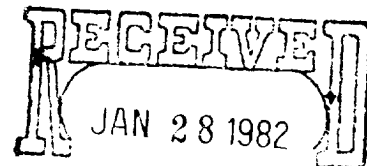
22. APPROX. DATE WORK WILL START*

2-24-82

23.

PROPOSED CASING AND CEMENTING PROGRAM

SIZE OF HOLE	SIZE OF CASING	WEIGHT PER FOOT	SETTING DEPTH	QUANTITY OF CEMENT
12 1/4"	8 5/8"	24#	1,550'	350 sx Poz III CIRCULATE
7 7/8"	5 1/2"	15.5#	3,900'	300 sx Class C



OIL & GAS
U.S. GEOLOGICAL SURVEY
ROSWELL, NEW MEXICO

IN ABOVE SPACE DESCRIBE PROPOSED PROGRAM: If proposal is to deepen or plug back, give data on present productive zone and proposed new productive zone. If proposal is to drill or deepen directionally, give pertinent data on subsurface locations and measured and true vertical depths. Give blowout preventer program, if any.

24.

SIGNED

Daniel A. McNabb

TITLE

Operator

DATE

1-27-82

(This space for Federal or State office use)

PERMIT NO.

APPROVED

APPROVAL DATE

APPROVED BY

TITLE

CONDITIONS OF APPROVAL, IF ANY

FEB 11 1982

JAMES A. GILLHAM
DISTRICT SUPERVISOR

PERMIT SUBJECT TO
GENERAL REQUIREMENTS AND
SPECIAL STIPULATIONS
ATTACHED

*See Instructions On Reverse Side

NEW MEXICO OIL CONSERVATION COMMISSION
WELL LOCATION AND ACREAGE DEDICATION PLAT

Form C-102
Supersedes C-128
Effective 1-1-65

All distances must be from the outer boundaries of the Section

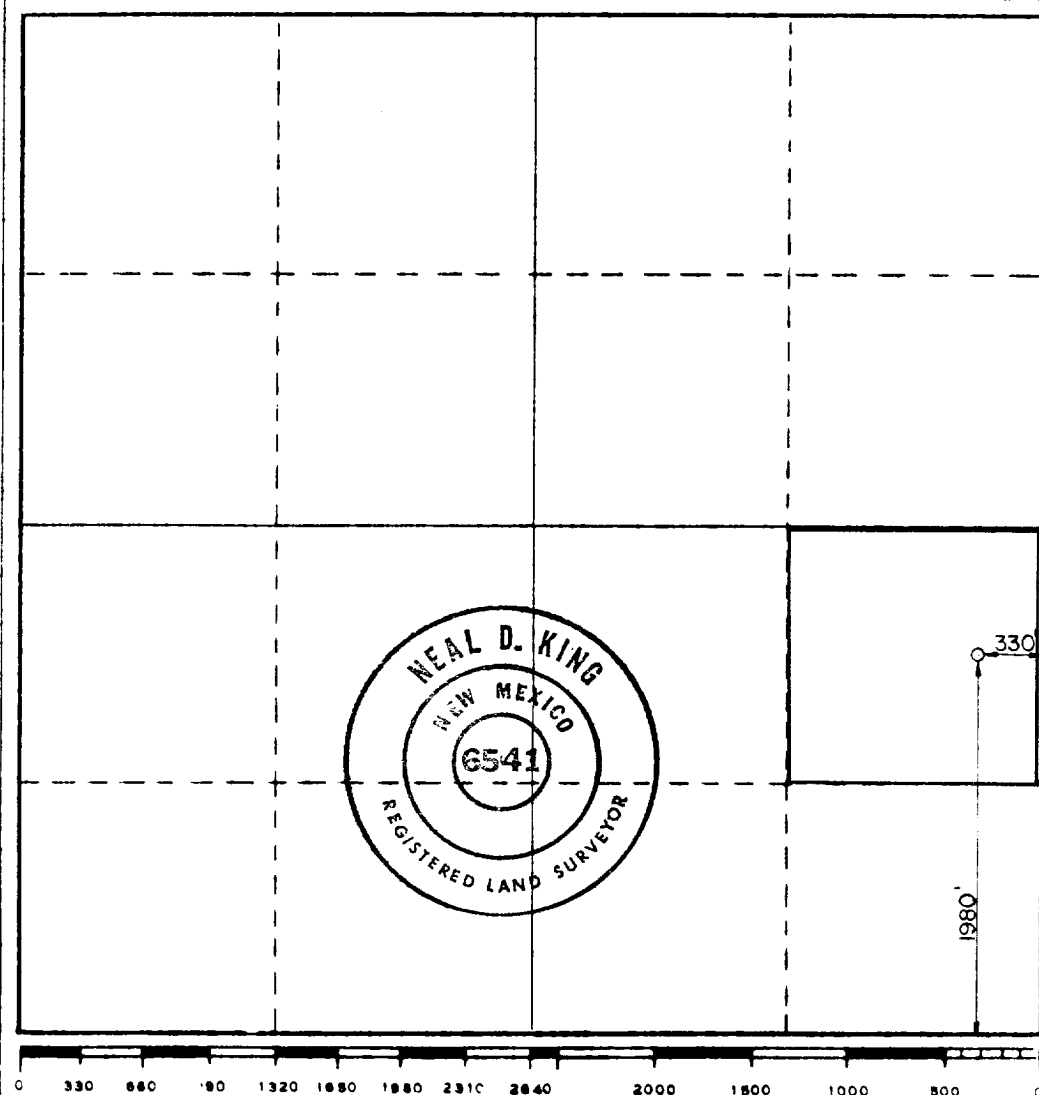
Operator Daniel A. McNabb			Lease Gulf Federal		Well No. 1
Unit Letter I	Section 14	Township 19 South	Range 33 East	County Lea	
Actual Footage Location of Well: 1980 feet from the South line and 330 feet from the East line					
Ground Level Elev. 3638.1	Producing Formation Yates-Seven Rivers		Pool Tonto Seven Rivers		Dedicated Acreage: 40 Acres

1. Outline the acreage dedicated to the subject well by colored pencil or hachure marks on the plat below.
2. If more than one lease is dedicated to the well, outline each and identify the ownership thereof (both as to working interest and royalty).
3. If more than one lease of different ownership is dedicated to the well, have the interests of all owners been consolidated by communitization, unitization, force-pooling, etc?

☐ Yes ☐ No If answer is "yes," type of consolidation _____

If answer is "no," list the owners and tract descriptions which have actually been consolidated. (Use reverse side of this form if necessary.) _____

No allowable will be assigned to the well until all interests have been consolidated (by communitization, unitization, forced-pooling, or otherwise) or until a non-standard unit, eliminating such interests, has been approved by the Commission.



CERTIFICATION

I hereby certify that the information contained herein is true and complete to the best of my knowledge and belief.

Daniel A. McNabb
Name

Position
Operator

Company

Date
January 27, 1982

I hereby certify that the well location shown on this plat was plotted from field notes of actual surveys made by me or under my supervision, and that the same is true and correct to the best of my knowledge and belief.

Date Surveyed
January 22, 1982

Registered Professional Engineer and/or Land Surveyor

Neal D. King
Certificate No.

6541

Daniel A. McNabb - Gulf Federal No. 1 1980' FSL 330' FEL Section 14, T-19-S, R-33-E
Lea County , New Mexico

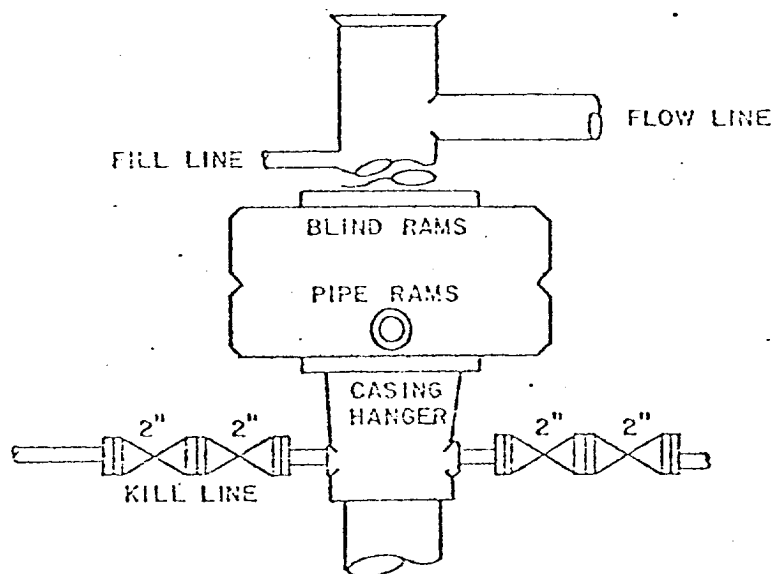


EXHIBIT "C"