

P. O. BOX 1980

HOBBS, NEW MEXICO 88240

UNITED STATES

DEPARTMENT OF THE INTERIOR

GEOLOGICAL SURVEY

SUBMIT IN TRIPL E*

(Other instructions on
reverse side)Form approved.
Budget Bureau No. 42-R1425.

30-025-27758

5. LEASE DESIGNATION AND SERIAL NO.

NM-0557686

6. IF INDIAN, ALLOTTEE OR TRIBE NAME

7. UNIT AGREEMENT NAME

NMFU

8. FARM OR LEASE NAME

SEMUL Blinbry/Tubb

9. WELL NO.

127

10. FIELD AND POOL, OR WILDCAT

Blinbry/Tubb

11. SEC., T., R., M., OR BLK.
AND SURVEY OR AREA

Sec. 14, T-20S, R-37E

12. COUNTY OR PARISH

Lea

NM

17. NO. OF ACRES ASSIGNED
TO THIS WELL

40

20. ROTARY OR CABLE TOOLS

Rotary

22. APPROX. DATE WORK WILL START*

April 3, 1982

1a. TYPE OF WORK

DRILL ☒DEEPEN ☐PLUG BACK ☐

b. TYPE OF WELL

OIL
WELL ☒GAS
WELL ☐

OTHER

SINGLE
ZONE ☐MULTIPLE
ZONE ☒

2. NAME OF OPERATOR

CONOCO INC.

3. ADDRESS OF OPERATOR

P. O. Box 460, Hobbs, N.M. 88240

4. LOCATION OF WELL (Report location clearly and in accordance with any State requirements.)*

At surface 1650' FNL & 660' FEL

At proposed prod. zone

14. DISTANCE IN MILES AND DIRECTION FROM NEAREST TOWN OR POST OFFICE*

15. DISTANCE FROM PROPOSED*

LOCATION TO NEAREST
PROPERTY OR LEASE LINE, FT.
(Also to nearest drlg. unit line, if any)

16. NO. OF ACRES IN LEASE

18. DISTANCE FROM PROPOSED LOCATION*
TO NEAREST WELL, DRILLING, COMPLETED,
OR APPLIED FOR, ON THIS LEASE, FT.

19. PROPOSED DEPTH

6710'

21. ELEVATIONS (Show whether DF, RT, GR, etc.)

3546' GR (est)

23. PROPOSED CASING AND CEMENTING PROGRAM

SIZE OF HOLE	SIZE OF CASING	WEIGHT PER FOOT	SETTING DEPTH	QUANTITY OF CEMENT
12 1/4"	9 5/8"	36 #	1410'	5555x - circulate
8 1/2"	7"	26 #	6710'	8955x - circulate

It is proposed to drill a straight hole to a TD of 6710' and complete it as a Blinbry/Tubb dual oil well.

See attachments for 10 point well plan and 13 point Surface Use Plan.

IN ABOVE SPACE DESCRIBE PROPOSED PROGRAM: If proposal is to deepen or plug back, give data on present productive zone and proposed new productive zone. If proposal is to drill or deepen directionally, give pertinent data on subsurface locations and measured and true vertical depths. Give blowout preventer program, if any.

24.

SIGNED W. A. Butterfield TITLE Administrative Supervisor

DATE February 2, 1982

(This space for Federal or State office use)

PERMIT NO.

APPROVED

APPROVED BY

CONDITIONS OF APPROVAL, IF ANY:

FEB 22 1982

JAMES A. GILLHAM
DISTRICT SUPERVISOR

APPROVAL SUBJECT TO

GENERAL REQUIREMENTS AND

SPECIAL STIPULATIONS

ATTACHED

DATE

USGS (MMS)
NMFU
3seAd2
File 1

*See Instructions On Reverse Side

**NEW MEXICO OIL CONSERVATION COMMISSION
WELL LOCATION AND ACREAGE DEDICATION PLAT**

Form C-102
Supersedes C-128
Effective 1-1-65

All distances must be from the outer boundaries of the Section.

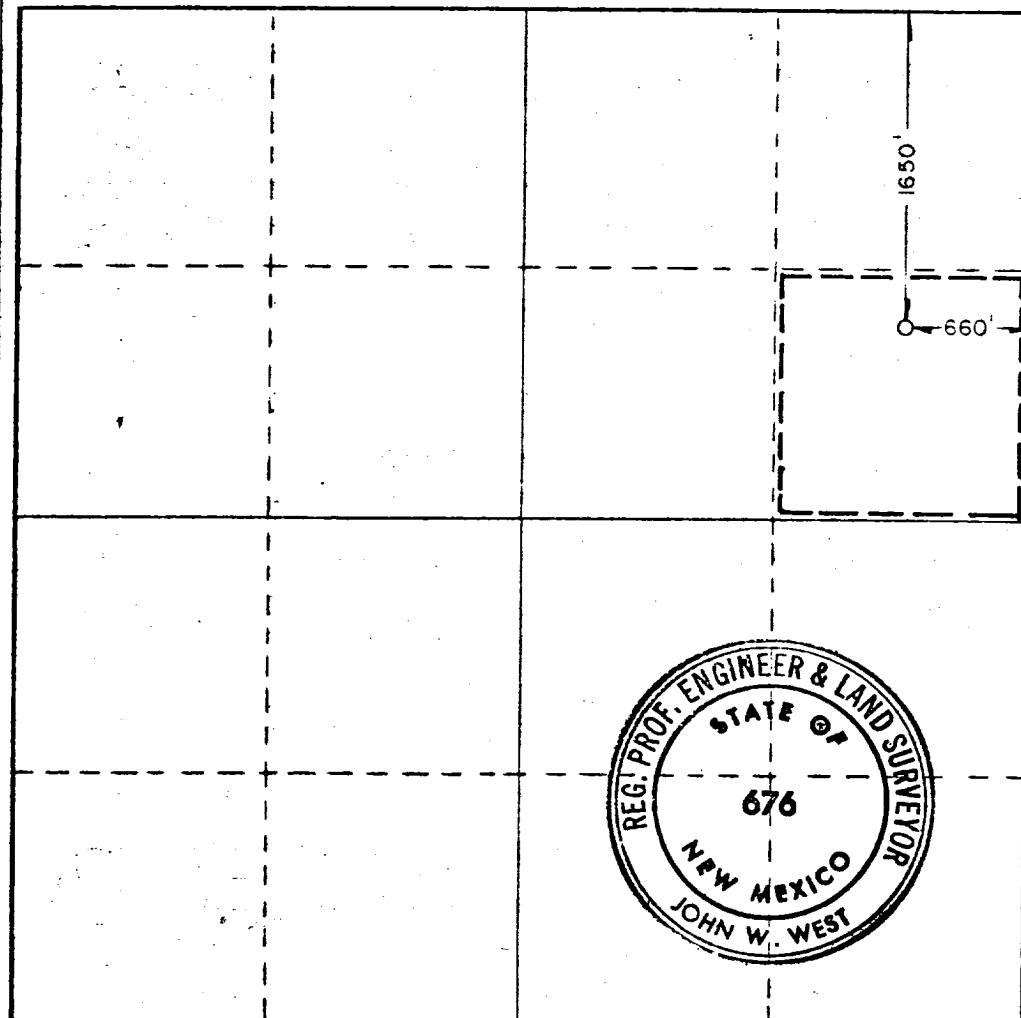
Operator Conoco, Inc.			Lease SEM Blinebry Tubb		Well No. 127
Unit Letter H	Section 14	Township 20 South	Range 37 East	County Lea	
Actual Footage Location of Well: <div style="display: flex; justify-content: space-between;"> 1650 feet from the north line and 660 feet from the east line </div>					
Ground Level Elev. 3545.8'	Producing Formation Blinebry Tubb	Pool Blinebry Oil & Gas Monument Tubb	Dedicated Acreage: 40 Acres		

1. Outline the acreage dedicated to the subject well by colored pencil or hatchure marks on the plat below.
2. If more than one lease is dedicated to the well, outline each and identify the ownership thereof (both as to working interest and royalty).
3. If more than one lease of different ownership is dedicated to the well, have the interests of all owners been consolidated by communitization, unitization, force-pooling, etc?

☐ Yes ☐ No If answer is "yes," type of consolidation _____

If answer is "no," list the owners and tract descriptions which have actually been consolidated. (Use reverse side of this form if necessary.) _____

No allowable will be assigned to the well until all interests have been consolidated (by communitization, unitization, forced-pooling, or otherwise) or until a non-standard unit, eliminating such interests, has been approved by the Commission.



CERTIFICATION

I hereby certify that the information contained herein is true and complete to the best of my knowledge and belief.

Name Wm. A. Butterfield
Position Administrative Supervisor
Company Conoco Inc.
Date February 7, 1982

I hereby certify that the well location shown on this plat was plotted from field notes of actual surveys made by me or under my supervision, and that the same is true and correct to the best of my knowledge and belief.

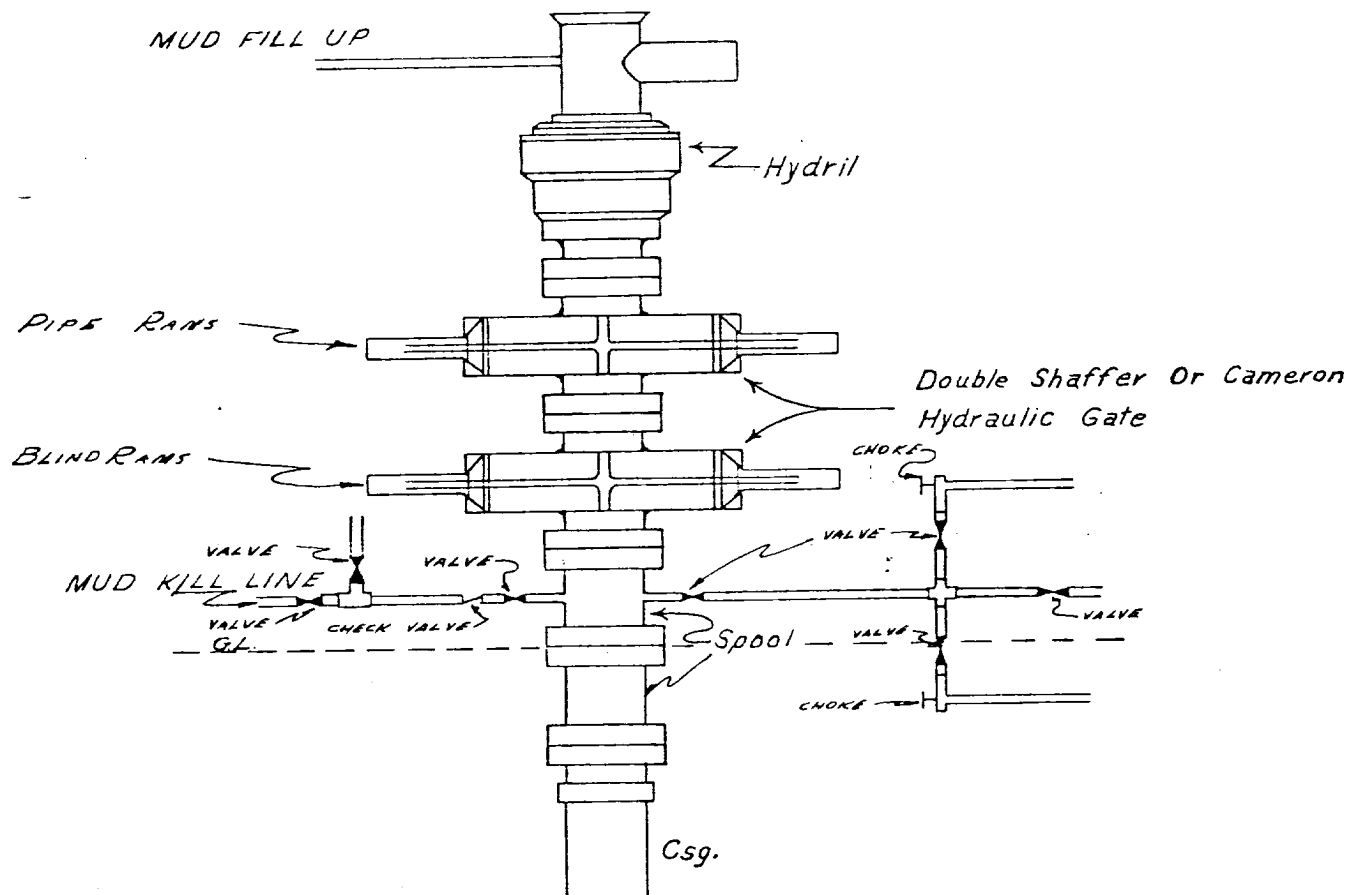
Date Surveyed 12-23-81
Registered Professional Engineer and/or Land Surveyor

John W. West

Certificate No. **JOHN W. WEST 676**
PATRICK A. ROMERO 6883
Ronald J. Eidson 3230



CONTINENTAL OIL COMPANY
Blow-out Preventer Specifications



API Series 900

NOTE:

Manual and Hydraulic controls with closing unit no less than 75' from well head.
Remote controls on rig floor.

**DUE TO SUBSTRUCTURE CLEARANCE,
HYDRIL MAY OR MAY NOT BE USED.**