

COUNTY LEA

FIELD Jalmat

© Copyrighted Reproduction Prohibited.

OPR SUN EXPLORATION & PRODUCTION CO.

STATNM.

NO 9 LEASE Courtland-Myers

API 30-025-27787

Sec 6, T24S, R37E

MAP

.760 FSL, 960 FEL of Sec

COORD

9 mi N/Jal

SPI 7-5-82

9-3-20 NM

CMP 8-11-82

ISC

8 5/8-377-300 sx  
5 1/2-3300-700 sx  
2 7/8-2815

WELL CLASS. INITD FINDG LSE. CODE

FORMATION	DATUM	FORMATION	DATUM
ID 3300 (SVRV)		PBD 3053	

IP(Yates) Perfs 2930-3018 F 1720 MCF/GPD. Pot based on  
24 hr test thru 25/64 chk. GOR Dry; gty (Gas) (NR); CP  
Pkr; TP 480

CONTR Cactus #58

OPRSITLV

3310 GL

sub-s 9

7-12-82 F.R. 4-12-82  
7-29-82 PD 3400 RT (Yates)  
8-9-82 TD 3300; WOCU  
TD 3300; PBD 3258; Prep Frac  
Perf (Yates) 3088-92, 3096-3102, 3140-44,  
3150-62, 3170-80 w/1 SP 2 FT  
Acid (3088-3180) 1500 gals + 5000 gals foam  
TD 3300; PBD 3053; Recg 1d  
Frac (3088-3180) 60,000 gals + 100,000# sd  
+ 825,000 SCF N2  
Flwd 3/4 BO + 2 BLW in 3 hrs 30 mins thru  
1 chk, TP 90-10 (3088-3180)  
Perf (Yates) 2930-44, 3004-18 w/1 SP 2 FT  
FARO 480-450 MCF/GPD in 15 hrs thru 3/4 chk,  
TP 40 (2930-3018)  
BP @ 3053  
Acid (2930-3018) 5000 gals + 94,000 SCF N2  
9-3-20 NM

LEA  
SUN EXPLORATION &  
PRODUCTION CO.

Jalmat  
9 Courtland-Myers  
Sec 6, T24S, R37E

NM  
Page #2

8-9-82

Continued  
FARO 403 MCFGPD in 1 hr thru 3/4 chk, TP  
32-73 (2930-3018)  
Frac (2930-3018) 60,000 gals + 100,000# sd  
FARO 1200-1500 MCFGPD + 10 BLW in 5 hrs  
30 mins thru 18/64-25/64 chk, TP 680-480  
(2930-3018)

8-11-82

TD 3300; PBD 3053; WOSP  
FARO 1720 MCFGPD thru 25/64 chk, TP 480  
(2930-3018)

9-13-82

TD 3300; PBD 3053; Complete  
LOG TOPS: Rustler 1164, Tansill 2730,  
9-3-20 NM

9-13-82

Continued  
Yates 2884, Seven Rivers 3198  
LOGS RUN: GRL, CORL, CNL, FDC, DILL,  
CALP

9-18-82

Rig Released 7-10-82  
COMPLETION ISSUED

9-3-20 NM  
IC 30-025-70372-82

**NEW MEXICO OIL CONSERVATION COMMISSION  
WELL LOCATION AND ACREAGE DEDICATION PLAT**

Form C-1-1-64  
Supersedes C-128  
Effective 1-1-65

All distances must be from the outer boundaries of the Section.

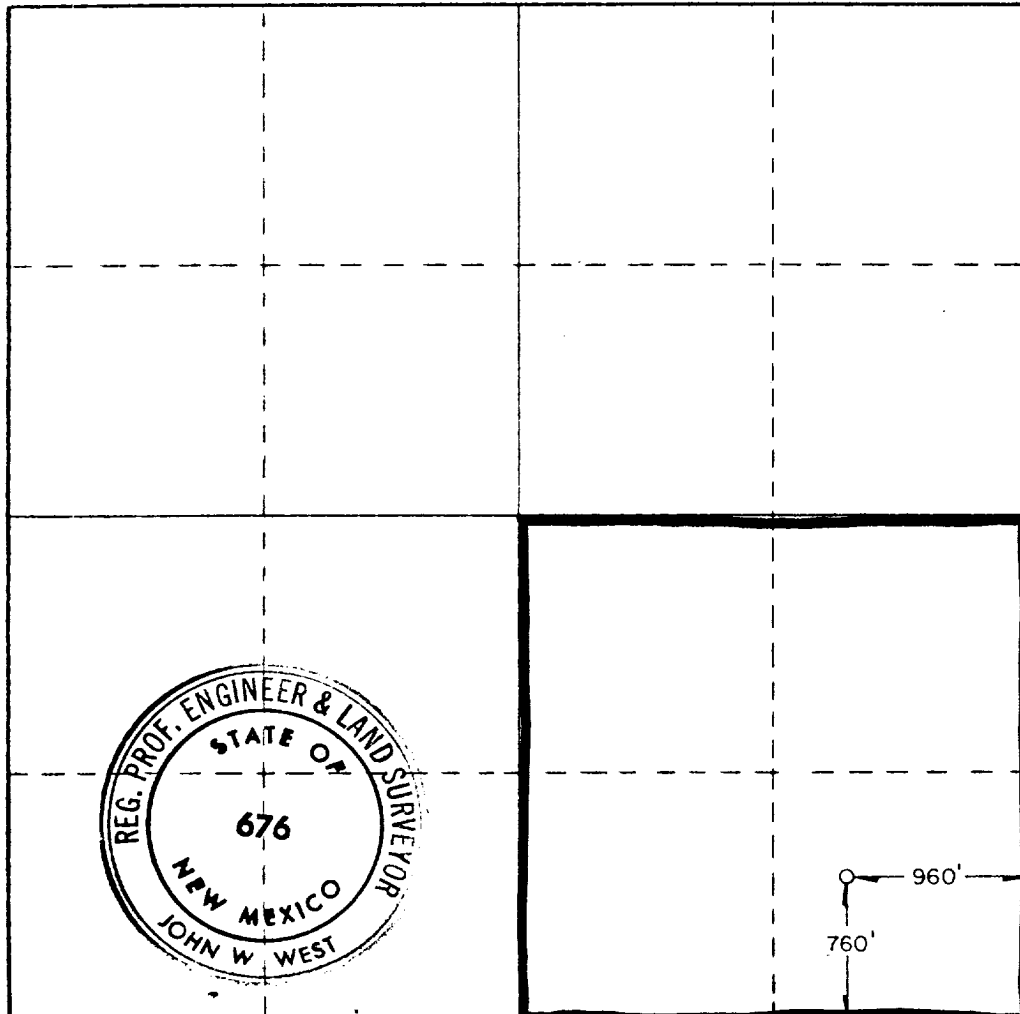
Operator <b>Sun Oil Company</b>			Lease <b>Courtland Myers</b>			Well No. <b>9</b>		
Unit Letter <b>P</b>	Section <b>6</b>	Township <b>24 South</b>	Range <b>37 East</b>	County <b>Lea</b>				
Actual Footage Location of Well: <b>760</b> feet from the <b>south</b> line and <b>960</b> feet from the <b>east</b> line								
Ground Level Elev. <b>3309.5'</b>	Producing Formation <b>Yates</b>		Pool <b>Jalmat Tansill Yt.</b> <b>7 Rvrs. (Pro Gas)</b>			Dedicated Acreage: <b>160</b> Acres		

1. Outline the acreage dedicated to the subject well by colored pencil or hachure marks on the plat below.
2. If more than one lease is dedicated to the well, outline each and identify the ownership thereof (both as to working interest and royalty).
3. If more than one lease of different ownership is dedicated to the well, have the interests of all owners been consolidated by communitization, unitization, force-pooling, etc?

☐ Yes    ☐ No    If answer is "yes," type of consolidation \_\_\_\_\_

If answer is "no," list the owners and tract descriptions which have actually been consolidated. (Use reverse side of this form if necessary.) \_\_\_\_\_

No allowable will be assigned to the well until all interests have been consolidated (by communitization, unitization, forced-pooling, or otherwise) or until a non-standard unit, eliminating such interests, has been approved by the Commission.



**CERTIFICATION**

I hereby certify that the information contained herein is true and complete to the best of my knowledge and belief.

Name  
*Maria L. Perez*  
Position  
**Sr. Accounting Assistant**  
Company  
**Sun Oil Company**  
Date  
**February 22, 1982**

I hereby certify that the well location shown on this plat was plotted from field notes of actual surveys made by me or under my supervision, and that the same is true and correct to the best of my knowledge and belief.

Date Surveyed  
**1-15-82**  
Registered Professional Engineer and/or Land Surveyor

*John W. West*  
Certificate No. **JOHN W. WEST 676**  
**PATRICK A. ROMERO 6863**  
**Ronald J. Eidson 3239**

