

NO. OF COPIES RECEIVED	
DISTRIBUTION	
SANTA FE	
FILE	
U.S.G.S.	
LAND OFFICE	
OPERATOR	

# NEW MEXICO OIL CONSERVATION COMMISSION

30-025-28078

Form C-101  
Revised 1-1-65

5A. Indicate Type of Lease	
STATE <input checked="" type="checkbox"/>	FEE <input type="checkbox"/>
5. State Oil & Gas Lease No.	

## APPLICATION FOR PERMIT TO DRILL, DEEPEN, OR PLUG BACK

1a. Type of Work		7. Unit Agreement Name	
b. Type of Well DRILL <input checked="" type="checkbox"/> DEEPEN <input type="checkbox"/> PLUG BACK <input type="checkbox"/>		8. Farm or Lease Name	
OIL WELL <input checked="" type="checkbox"/> GAS WELL <input type="checkbox"/> OTHER <input type="checkbox"/> SINGLE ZONE <input type="checkbox"/> MULTIPLE ZONE <input type="checkbox"/>		Lea "JB" State	
2. Name of Operator		9. Well No.	
Gulf Oil Corporation		1	
3. Address of Operator		10. Field and Pool, or Wildcat	
P. O. Box 670, Hobbs, NM 88240		Maljamar Grayburg San	
4. Location of Well		12. County	
UNIT LETTER M LOCATED 660 FEET FROM THE South LINE		Lea	
AND 660 FEET FROM THE West LINE OF SEC. 36 TWP. 16S RGE. 32E NMPM			
19. Proposed Depth		19A. Formation	
4550'		San Andres	
20. Rotary or C.T.		Rotary	
21. Elevations (Show whether DF, RT, etc.)		22. Approx. Date Work will start	
4259' GL		12-18-82	
21A. Kind & Status Plug. Bond		21B. Drilling Contractor	
		Unknown	

## PROPOSED CASING AND CEMENT PROGRAM

SIZE OF HOLE	SIZE OF CASING	WEIGHT PER FOOT	SETTING DEPTH	SACKS OF CEMENT	EST. TOP
12 1/4"	8-5/8"	24#	400'	300	circ
7-7/8"	5 1/2"	14#	4550'	650	circ

Mud Program: 0' - 400' FW Spud Mud 8.6-9.0ppg  
400' - 4550' Brine H2O 10.0ppg

See Attached BOP Drawing #2

APPROVAL VALID FOR 180 DAYS  
PERMIT EXPIRES 6/14/83  
UNLESS DRILLING UNDERWAY.

IN ABOVE SPACE DESCRIBE PROPOSED PROGRAM: IF PROPOSAL IS TO DEEPEN OR PLUG BACK, GIVE DATA ON PRESENT PRODUCTIVE ZONE AND PROPOSED NEW PRODUCTIVE ZONE. GIVE BLOWOUT PREVENTER PROGRAM, IF ANY.

I hereby certify that the information above is true and complete to the best of my knowledge and belief.

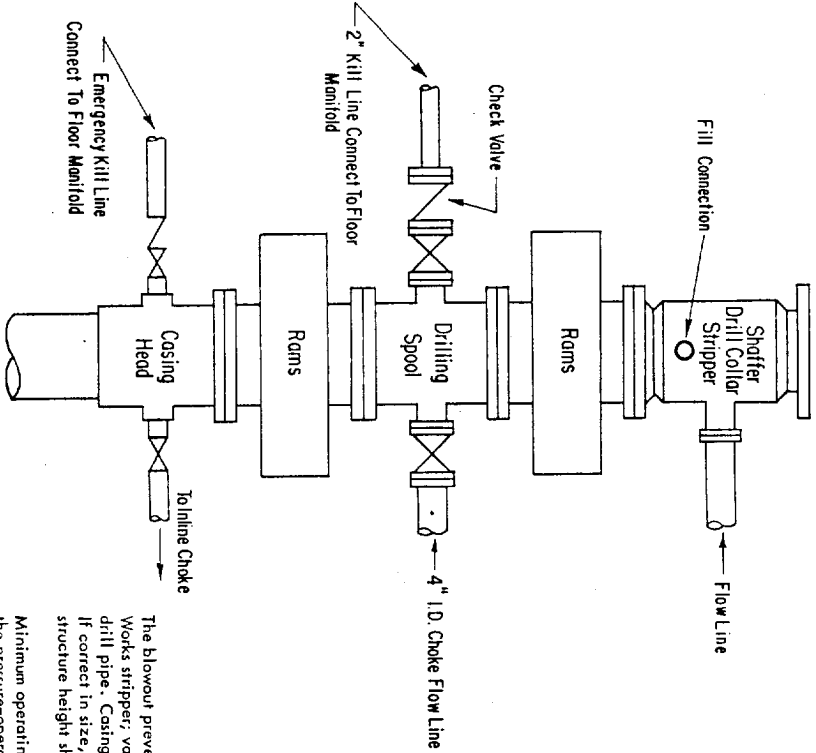
Signed L.P. Giddens Title Area Production Manager Date 12-9-82

(This space for State Use)

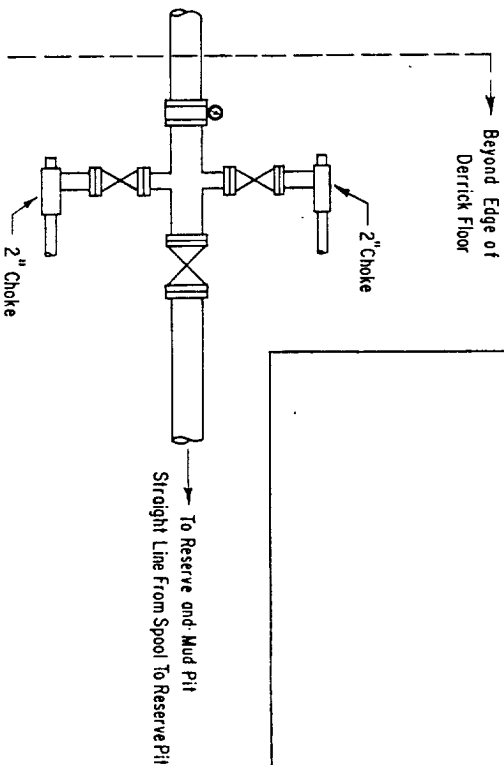
DEC 14 1982

ORIGINAL SIGNED BY JERRY SEXTON TITLE DISTRICT 1 SUPR. DATE

RECEIVED  
DEC 10 1982  
O.C.D.  
HOBBS OFFICE



### 3000 PSI WORKING PRESSURE BLOWOUT PREVENTER HOOK-UP



ADDITIONS - DELETIONS - CHANGES  
SPECIFY

The blowout preventer assembly shall consist of one blind ram preventer and one pipe ram preventer, both hydraulically operated, a Shafter Tool Works stripper, valves, chokes and connections, as illustrated. If a tapered drill string is used, a ram preventer must be provided for each size of drill pipe. Casing and tubing rams to fit the preventers are to be available as needed. The ram preventers may be two singles or a double type. If correct in size, the flanged outlets of the ram preventer may be used for connecting to the 4-inch I. D. choke flow line and kill line. The sub-structure height shall be sufficient to install a rotating blowout preventer.

Minimum operating equipment for the preventers shall be as follows: (1) Pump (s), driven by a continuous source of power, capable of closing all the pressure-operated devices simultaneously within \_\_\_\_\_ seconds. The pump (s) is to be connected to a closed type hydraulic operating system. (2) When requested, accumulators with a precharge of nitrogen of not less than 750 PSI and connected so as to receive a fluid charge from the above pump (s). With the charging pump (s) shut down, the pressurized fluid volume stored in the accumulators must be sufficient to close all the pressure-operated devices simultaneously within \_\_\_\_\_ seconds; after closure, the remaining accumulator pressure shall be not less than 1000 PSI with the remaining accumulator fluid volume of at least \_\_\_\_\_ percent of the original. (3) When requested, an additional source of power, remote and equivalent, is to be available to operate the above pump (s); or there shall be an additional pump (s) operated by separate power and equal in performance capabilities.

The closing manifold shall have a separate control for each pressure-operated device. Controls are to be labeled, with control handles indicating open and closed positions. A pressure reducer and regulator must be provided if a Hydril preventer is used. Gulf Legion No. 38 hydraulic oil, an equivalent or better, is to be used as the fluid to operate the hydraulic equipment.

The choke manifold, choke flow line, and choke lines are to be supported by metal stands and adequately anchored. The choke flow line and choke lines shall be constructed as straight as possible and without sharp bends. Easy and safe access is to be maintained to the choke manifold. All valves are to be selected for operation in the presence of oil, gas, and drilling fluids. The choke flow line valve connected to the drilling spool and all ram type preventers must be equipped with stem extensions, universal joints if needed, and hand wheels which are to extend beyond the edge of the derrick substructure. All other valves are to be equipped with handles.

RECEIVED  
DEC 1 0 1982  
FBI  
FEDERAL BUREAU OF INVESTIGATION  
U.S. DEPARTMENT OF JUSTICE

**NEW MEXICO OIL CONSERVATION COMMISSION  
WELL LOCATION AND ACREAGE DEDICATION PLAT**

Form C-102  
Supersedes C-128  
Effective 1-1-65

All distances must be from the outer boundaries of the Section

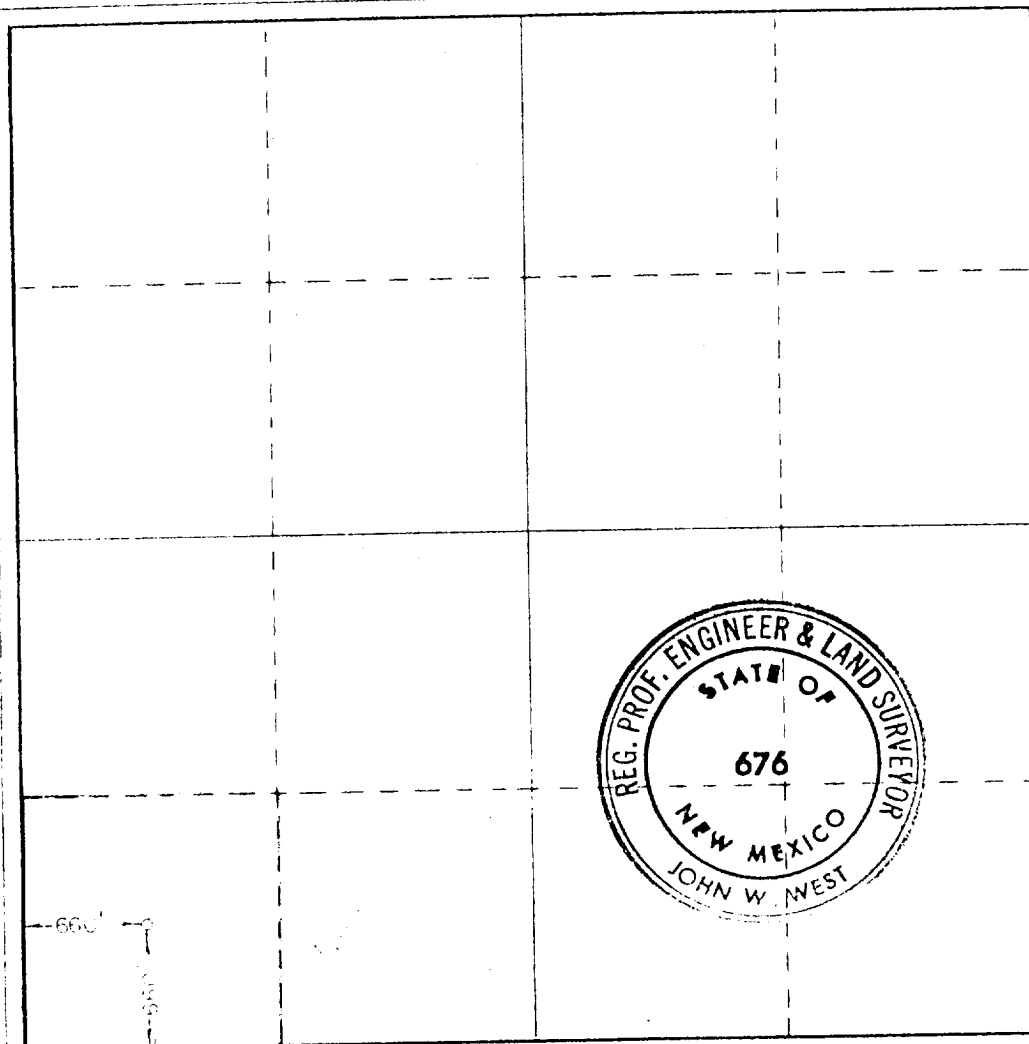
Operator <b>Gulf Oil Corporation</b>			Lease <b>Lea J.B. State</b>		Well No. <b>1</b>
Unit Letter <b>M</b>	Section <b>36</b>	Township <b>16 S</b>	Range <b>32 E</b>	County <b>Lea County</b>	
Actual Footage Location of Well: <b>660</b> feet from the <b>South</b> line and <b>660</b> feet from the <b>West</b> line					
Ground Level Elev. <b>4259.4</b>	Producing Formation <b>San Andres</b>		Pool <b>Maljamar Grayburg San Andres</b>		Dedicated Acreage: <b>40</b>

1. Outline the acreage dedicated to the subject well by colored pencil or hachure marks on the plat below.
2. If more than one lease is dedicated to the well, outline each and identify the ownership thereof (both as to working interest and royalty).
3. If more than one lease of different ownership is dedicated to the well, have the interests of all owners been consolidated by communitization, unitization, force-pooling, etc?

☐ Yes    ☐ No    If answer is "yes," type of consolidation \_\_\_\_\_

If answer is "no," list the owners and tract descriptions which have actually been consolidated. (Use reverse side of this form if necessary.) \_\_\_\_\_

No allowable will be assigned to the well until all interests have been consolidated (by communitization, unitization, forced-pooling, or otherwise) or until a non-standard unit, eliminating such interests, has been approved by the Commission.



**CERTIFICATION**

I hereby certify that the information contained herein is true and complete to the best of my knowledge and belief.

*R. C. Anderson*

Name  
**R. C. Anderson**

Position  
**Area Production Manager**

Company  
**Gulf Oil Corporation**

Date  
**12-9-82**

I hereby certify that the well location shown on this plat was plotted from field notes of actual surveys made by me or under my supervision and that the same is true and correct to the best of my knowledge and belief.

Date Surveyed  
**12/08/82**

Registered Professional Engineer and Land Surveyor

*John W. West*

Certificate No.  
**John W. West No. 626**

