

**NEW MEXICO OIL CONSERVATION COMMISSION
WELL LOCATION AND ACREAGE DEDICATION PLAT**

Form C-102
Supersedes C-124
Effective 1-1-65

All distances must be from the outer boundaries of the Section.

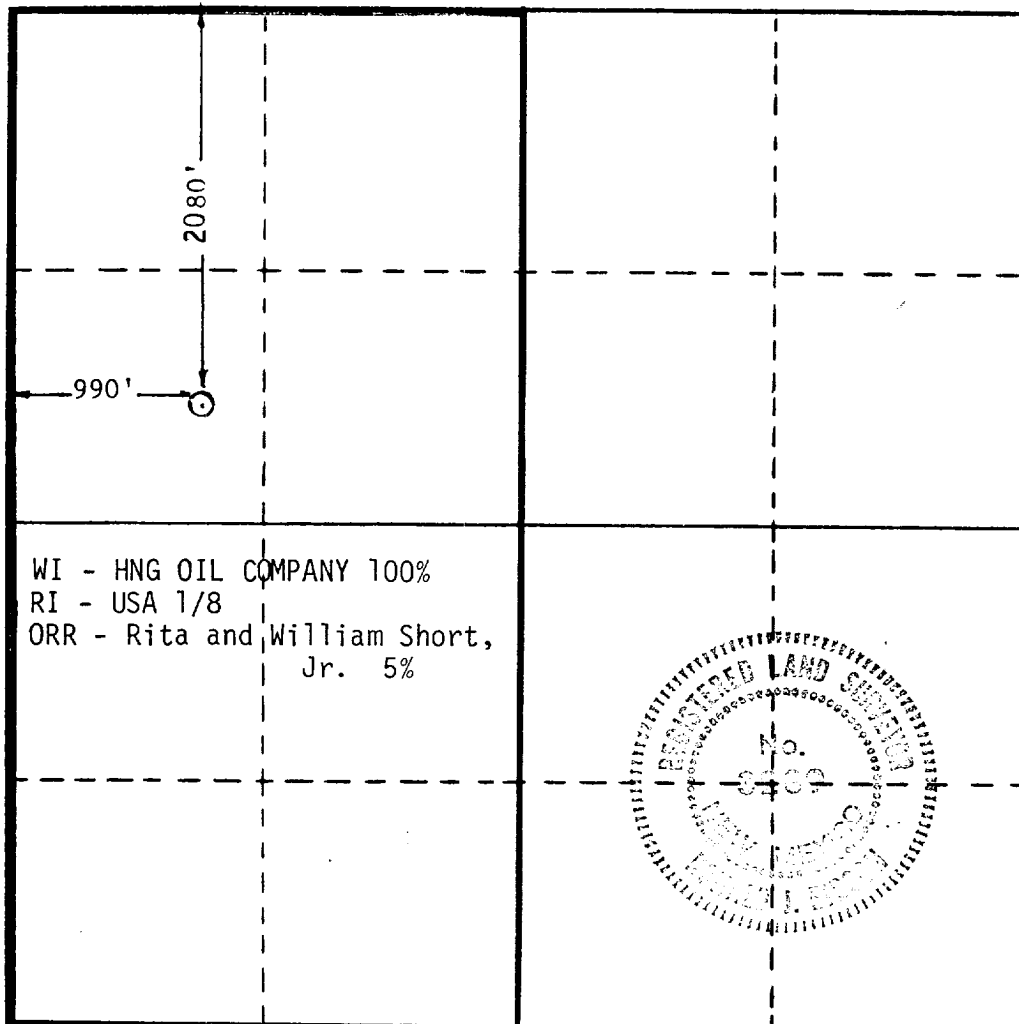
Operator H N G Oil Co.			Lease Ochoa 26 Federal		Well No. # 1
Unit Letter E	Section 26	Township 24 South	Range 34 East	County Lea	
Actual Footage Location of Well: 2080 feet from the North line and 990 feet from the West line					
Ground Level Elev. 3460.4'	Producing Formation Morrow		Pool Wildcat	Dedicated Acreage: 320 Acres	

1. Outline the acreage dedicated to the subject well by colored pencil or hatchure marks on the plat below.
2. If more than one lease is dedicated to the well, outline each and identify the ownership thereof (both as to working interest and royalty).
3. If more than one lease of different ownership is dedicated to the well, have the interests of all owners been consolidated by communitization, unitization, force-pooling, etc?

☐ Yes ☐ No If answer is "yes," type of consolidation _____

If answer is "no," list the owners and tract descriptions which have actually been consolidated. (Use reverse side of this form if necessary.) _____

No allowable will be assigned to the well until all interests have been consolidated (by communitization, unitization, forced-pooling, or otherwise) or until a non-standard unit, eliminating such interests, has been approved by the Commission.



CERTIFICATION

I hereby certify that the information contained herein is true and complete to the best of my knowledge and belief.

Betty Gildon

Name
Betty Gildon

Position
Regulatory Analyst

Company
HNG OIL COMPANY

Date
August 18, 1983

I hereby certify that the well location shown on this plat was plotted from field notes of actual surveys made by me or under my supervision, and that the same is true and correct to the best of my knowledge and belief.

August 15, 1983

Date Surveyed

Registered Professional Engineer
and/or Land Surveyor

Ronald J. Eldon

Certificate No. **JOHN W. WEST 678**
PATRICK A. ROMERO 6663
Ronald J. Eldon 3239

