

NO. OF COPIES RECEIVED	
DISTRIBUTION	
SANTA FE	
FILE	
U.S.G.S.	
LAND OFFICE	
OPERATOR	

NEW MEXICO OIL CONSERVATION COMMISSION

AP-30-025-2843
Form C-101
Revised 14-65

5A. Indicate Type of Lease	
STATE <input checked="" type="checkbox"/>	FEE <input type="checkbox"/>
5. State Oil & Gas Lease No.	
V-724	

APPLICATION FOR PERMIT TO DRILL, DEEPEN, OR PLUG BACK

1a. Type of Work		7. Unit Agreement Name	
b. Type of Well OIL WELL <input checked="" type="checkbox"/> GAS WELL <input type="checkbox"/> OTHER <input type="checkbox"/>		8. Farm or Lease Name New Mexico ED State	
2. Name of Operator Exxon Corporation		9. Well No. 1	
3. Address of Operator P.O. Box 1600, Midland, TX 79702		10. Field and Pool, or Wildcat Undesig. Scharb-Bone Springs & Wolfcamp	
4. Location of Well UNIT LETTER K LOCATED 1980 FEET FROM THE South LINE AND 1980 FEET FROM THE West LINE OF SEC. 1 TWP. 19S RGE. 35E NMPM		12. County Lea	
19. Proposed Depth 10,800'		19A. Formation Bone Springs & Wolfcamp	
21. Elevations (Show whether DF, RT, etc.) 3844' GR		22. Approx. Date Work will start 10/15/83	

PROPOSED CASING AND CEMENT PROGRAM

SIZE OF HOLE	SIZE OF CASING	WEIGHT PER FOOT	SETTING DEPTH	SACKS OF CEMENT	EST. TOP
17-1/2	13 3/8"	54.5#	400'	350	Surface
12-1/4	9-5/8"	40#	4000'	1400	Surface
7-7/8"	5-1/2"	17#	10,800'	1100	4000'

Mud Program

0-400
400 - 4000
4000 - 9900
9900 - 10,800

FW Spud Mud
10 ppg Saturated Brine
Fresh Water 8.4 ppg
FW Mud 9 ppg

Two (2) Type II-C (2000 psi) BOP's
will be used.

Diagrammatic sketch & specifications of BOP are attached.
Gas is not dedicated to a purchaser.

180
3-26-84

IN ABOVE SPACE DESCRIBE PROPOSED PROGRAM: IF PROPOSAL IS TO DEEPEN OR PLUG BACK, GIVE DATA ON PRESENT PRODUCTIVE ZONE AND PROPOSED NEW PRODUCTIVE ZONE. GIVE BLOWOUT PREVENTER PROGRAM, IF ANY.

I hereby certify that the information above is true and complete to the best of my knowledge and belief.

Signed Meelba Knippling Title Unit Head Date 9/21/83

(This space for State Use)

ORIGINAL SIGNED BY JERRY SEXTON

APPROVED BY DISTRICT 1 SUPERVISOR TITLE DATE SEP 26 1983

CONDITIONS OF APPROVAL, IF ANY:

WELL LOCATION AND ACREAGE DEDICATION PLAT

Supersedes C-128
Effective 1-1-65

State Lse. No. _____

Federal Lse. No. _____

All distances must be from the outer boundaries of the Section.

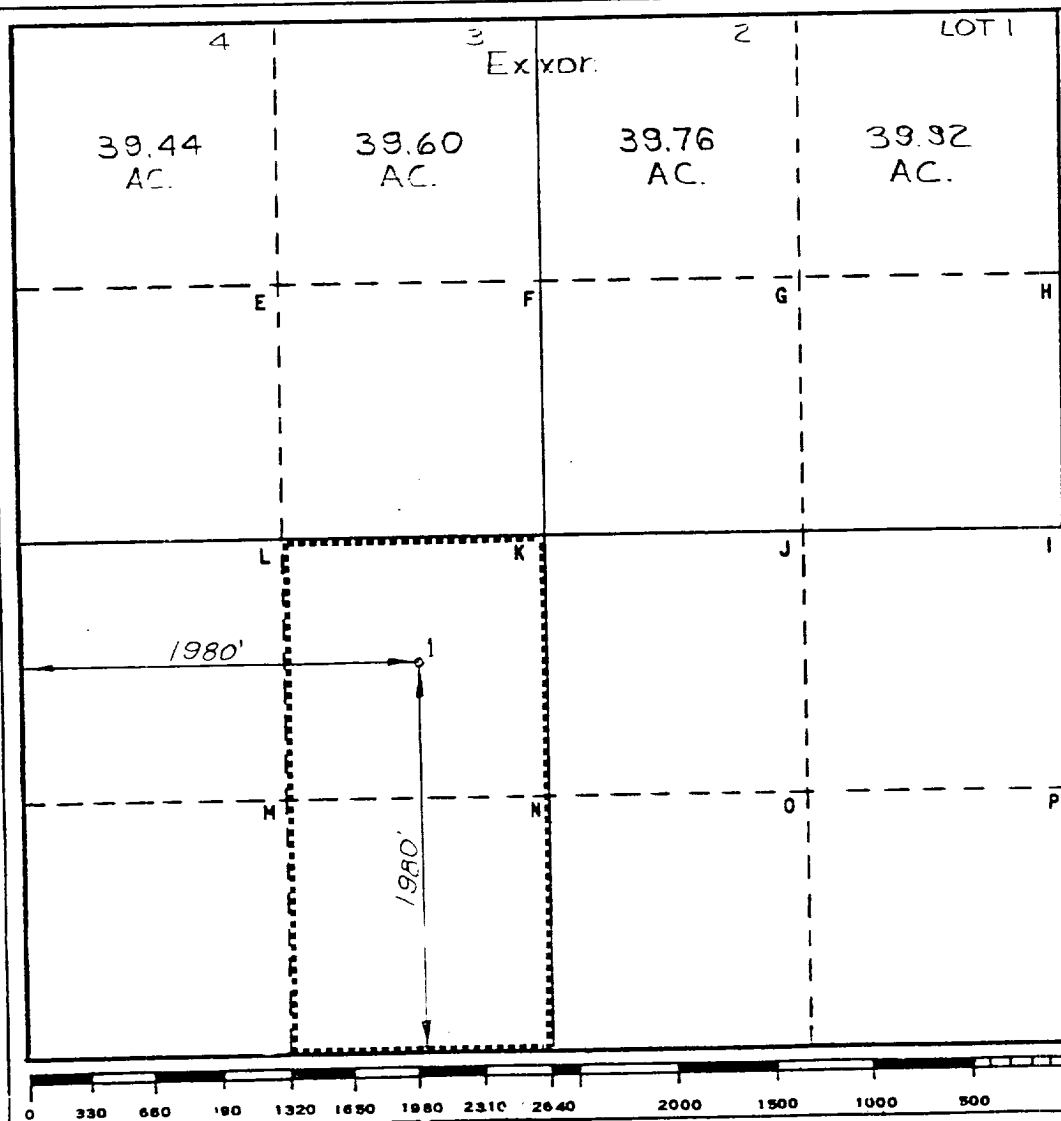
Operator Exxon Corporation			Lease NEW MEXICO "ED" STATE		Well No. 1
Unit Letter G	Section 1	Township 19S	Range 35E	County LEA	
Actual Footage Location of Well: 1980' feet from the SOUTH line and 1980' feet from the WEST line					
Ground Level Elev. 3844'	Producing Formation BONE SPRING	Pool UNDES. SCHARB-BONE SPRING	Dedicated Acreage: 80 Acres		

1. Outline the acreage dedicated to the subject well by colored pencil or hachure marks on the plat below.
2. If more than one lease is dedicated to the well, outline each and identify the ownership thereof (both as to working interest and royalty).
3. If more than one lease of different ownership is dedicated to the well, have the interests of all owners been consolidated by communitization, unitization, force-pooling, etc?

☐ Yes ☐ No If answer is "yes," type of consolidation _____

If answer is "no," list the owners and tract descriptions which have actually been consolidated. (Use reverse side of this form if necessary.) _____

No allowable will be assigned to the well until all interests have been consolidated (by communitization, unitization, forced-pooling, or otherwise) or until a non-standard unit, eliminating such interests, has been approved by the Commission.



CERTIFICATION

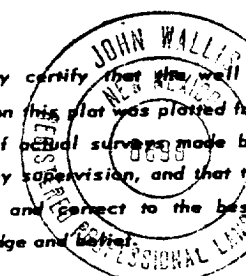
I hereby certify that the information contained herein is true and complete to the best of my knowledge and belief.

Name
Melba Knipling
Position
UNIT HEAD

Company **Exxon Corporation**
Box 1600 Midland, Texas

Date
9-22-83

I hereby certify that the well location shown on this plat was plotted from field notes of actual surveys made by me or under my supervision, and that the same is true and correct to the best of my knowledge and belief.



Date Surveyed
9-13-83

Registered Professional Engineer and/or Land Surveyor

John Wallis

Certificate No.
8699

17.2 Miles **WEST** of **HOERS**, New Mexico **638 72 AC.** C.E. Sec. File No. **A-8282-A**

All distances must be from the outer boundaries of the Section.

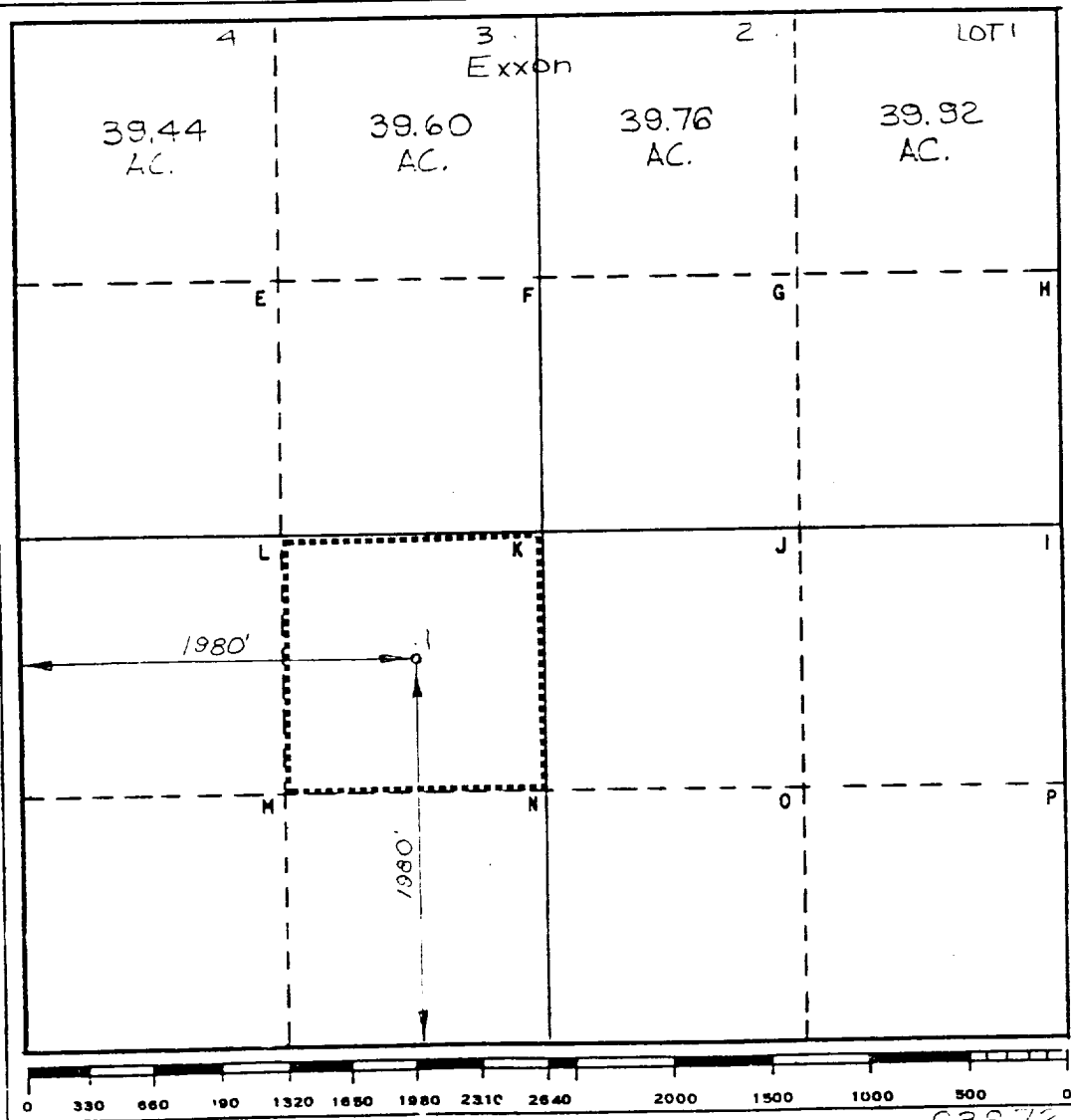
Operator Exxon Corporation		Lease NEW MEXICO "ED" STATE		Well No. 1
Unit Letter G	Section 1	Township 19S	Range 35E	County LEA
Actual Footage Location of Well: 1980 feet from the SOUTH line and 1980 feet from the WEST line				
Ground Level Elev. 3844'	Producing Formation WOLFCAMP	Pool UNDES. SCHARE-WOLFCAMP	Dedicated Acreage: 40 Acres	

1. Outline the acreage dedicated to the subject well by colored pencil or hatchure marks on the plat below.
2. If more than one lease is dedicated to the well, outline each and identify the ownership thereof (both as to working interest and royalty).
3. If more than one lease of different ownership is dedicated to the well, have the interests of all owners been consolidated by communitization, unitization, force-pooling, etc?

☐ Yes ☐ No If answer is "yes," type of consolidation _____

If answer is "no," list the owners and tract descriptions which have actually been consolidated. (Use reverse side of this form if necessary.) _____

No allowable will be assigned to the well until all interests have been consolidated (by communitization, unitization, forced-pooling, or otherwise) or until a non-standard unit, eliminating such interests, has been approved by the Commission.



CERTIFICATION

I hereby certify that the information contained herein is true and complete to the best of my knowledge and belief.

Name
Melba Kripling

Position
UNIT HEAD

Company
Exxon Corporation

Box 1600 Midland, Texas

Date
9-22-83

I hereby certify that the well location shown on this plat was plotted from field notes of actual surveys made by me or under my supervision, and that the same is true and correct to the best of my knowledge and belief.

JOHN WALLIS
REGISTERED PROFESSIONAL LAND SURVEYOR
8699

Date Surveyed
9-13-83

Registered Professional Engineer and Land Surveyor
John Wallis

Certificate No.
8699

RECEIVED
SEP 23 1983
O.C.D.
HOBBS OFFICE

BLOWOUT PREVENTER SPECIFICATION
EQUIPMENT DESCRIPTION

TYPE II-C

All equipment should be at least 2000 psi WP or higher unless otherwise specified.

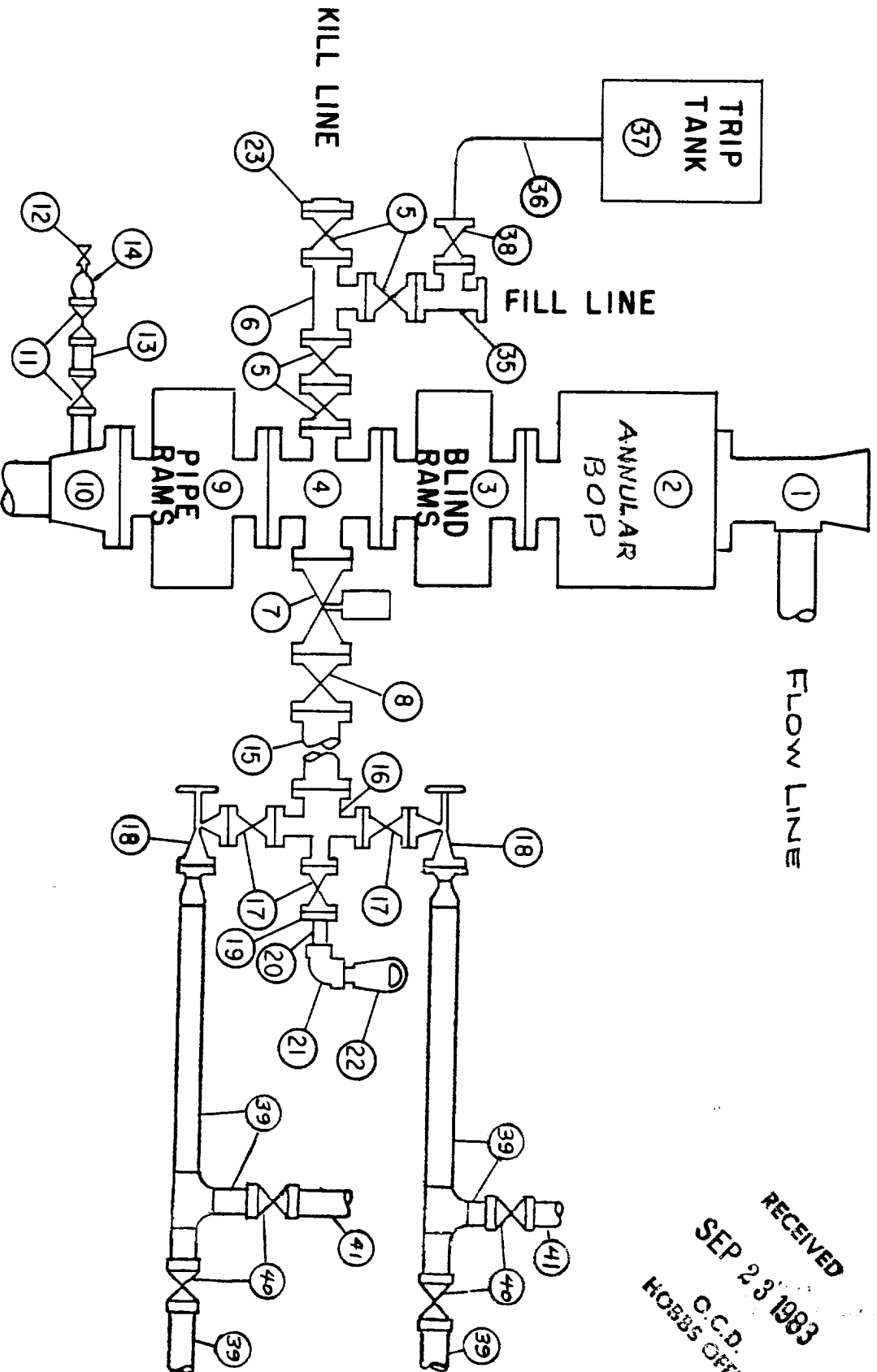
1. Bell nipple.
2. Hydril or Shaffer bag type preventer.
3. Ram type pressure operated blowout preventer with blind rams.
4. Flanged spool with one 4-inch and one 2-inch (minimum) outlet.
5. 2-inch (minimum) flanged plug or gate valve.
6. 2-inch by 2-inch by 2-inch (minimum) flanged tee.
7. 4-inch pressure operated gate valve.
8. 4-inch flanged gate or plug valve.
9. Ram type pressure operated blowout preventer with pipe rams.
10. Flanged type casing head with one side outlet (furnished by Exxon).
11. 2-inch threaded (or flanged) plug or gate valve (furnished by Exxon).
Flanged on 5000# WP, threaded on 3000# WP or less.
12. Needle valve (furnished by Exxon).
13. 2-inch nipple (furnished by Exxon).
14. Tapped bull plug (furnished by Exxon).
15. 4-inch flanged spacer spool.
16. 4-inch by 2-inch by 2-inch by 2-inch flanged cross.
17. 2-inch flanged plug or gate valve.
18. 2-inch flanged adjustable choke.
19. 2-inch threaded flange.
20. 2-inch XXH nipple.
21. 2-inch forged steel 90° Ell.
22. Cameron (or equal.) threaded pressure gage.
23. Threaded flange.

35. 2-inch flanged tee.
36. 3-inch (minimum) hose. (Furnished by Exxon).
37. Trip tank. (Furnished by Exxon).
38. 2-inch flanged plug or gate valve.
39. 2-1/2-inch pipe, 300' to pit, anchored.
40. 2-1/2-inch SE valve.
41. 2-1/2-inch line to steel pit or separator.

NOTES:

1. Items 3, 4 and 9 may be replaced with double ram type preventer with side outlets between the rams.
2. The two valves next to the stack on the fill and kill line to be closed unless drill string is being pulled.
3. Kill line is for emergency use only. This connection shall not be used for filling.
4. Replacement pipe rams and blind rams shall be on location at all times.
5. Only type U, LWS and QRC ram type preventers with secondary seals are acceptable for 5000 psi WP and higher BOP stacks.
6. Type E ram-type BOP's with factory modified side outlets may be used on 3000 psi or lower WP BOP stacks.

MIDLAND DRILLING ORGANIZATION BLOWOUT PREVENTER SPECIFICATION TYPE II - C



RECEIVED
 SEP 23 1983
 C.C.D.
 HOBBS OFFICE