

30-025-28696

NO. OF COPIES RECEIVED		
DISTRIBUTION		
SANTA FE		
FILE		
U.S.G.S.		
LAND OFFICE		
OPERATOR		

NEW MEXICO OIL CONSERVATION COMMISSION

Form C-101
Revised 1-1-65

5A. Indicate Type of Lease STATE <input checked="" type="checkbox"/> FEE <input type="checkbox"/>
5. State Oil & Gas Lease No. V-731
7. Unit Agreement Name --
8. Farm or Lease Name New Mexico EF State
9. Well No. 2
10. Field and Pool, or Wildcat Undesig. Cruz-Delaware
12. County Lea
19. Proposed Depth 5400'
19A. Formation Delaware
20. Rotary or C.T. Rotary
21. Elevations (Show whether DF, RT, etc.) 3717 CR
21A. Kind & Status Plug. Bond Blanket
21B. Drilling Contractor Unknown
22. Approx. Date Work will start 2nd Qtr. 1984

APPLICATION FOR PERMIT TO DRILL, DEEPEN, OR PLUG BACK

1a. Type of Work b. Type of Well OIL WELL <input checked="" type="checkbox"/> GAS WELL <input type="checkbox"/> OTHER <input type="checkbox"/> DRILL <input checked="" type="checkbox"/> DEEPEN <input type="checkbox"/> PLUG BACK <input type="checkbox"/> SINGLE ZONE <input checked="" type="checkbox"/> MULTIPLE ZONE <input type="checkbox"/>	2. Name of Operator Exxon Corporation	3. Address of Operator P.O. Box 1600, Midland, Texas 79702	4. Location of Well UNIT LETTER C LOCATED 988 FEET FROM THE N LINE AND 1650 FEET FROM THE W LINE OF SEC. 17 TWP. 23S RGE. 33E NMPM
23.			

PROPOSED CASING AND CEMENT PROGRAM

SIZE OF HOLE	SIZE OF CASING	WEIGHT PER FOOT	SETTING DEPTH	SACKS OF CEMENT	EST. TOP
11" or 12 1/4"	8 5/8"	24#	650'	550	Surface
7 7/8"	5 1/2"	14#	5400'	2250	Circ. into 8 5/8" csg.

Mud Program: 0-650' 8.4+ ppg FW Spud mud
650-5400' 10 ppg brine water

BOP: 8 5/8" Type II-C, 3000 PSI

Diagrammatic sketch and specifications of BOP are attached.

APPROVAL VALID FOR 180 DAYS
PERMIT EXPIRES 10/17/84
UNLESS DRILLING UNDERWAY

IN ABOVE SPACE DESCRIBE PROPOSED PROGRAM: IF PROPOSAL IS TO DEEPEN OR PLUG BACK, GIVE DATA ON PRESENT PRODUCTIVE ZONE AND PROPOSED NEW PRODUCTIVE ZONE. GIVE BLOWOUT PREVENTER PROGRAM, IF ANY.

I hereby certify that the information above is true and complete to the best of my knowledge and belief.

Signed Edgar Kunkel Title Unit Head Date 4-12-84
(This space for State Use)

APPROVED BY ORIGINAL SIGNED BY JERRY SEXTON
DISTRICT I SUPERVISOR

DATE

APR 17 1984

Exxon Lse. No. _____

MEXICO OIL CONSERVATION COMMISS

Form C-102
Supersedes C-128
Effective 1-1-65

State .se.No. _____

WELL LOCATION AND ACREAGE DEDICATION PLAT

Federal Lse. No. _____

All distances must be from the outer boundaries of the Section.

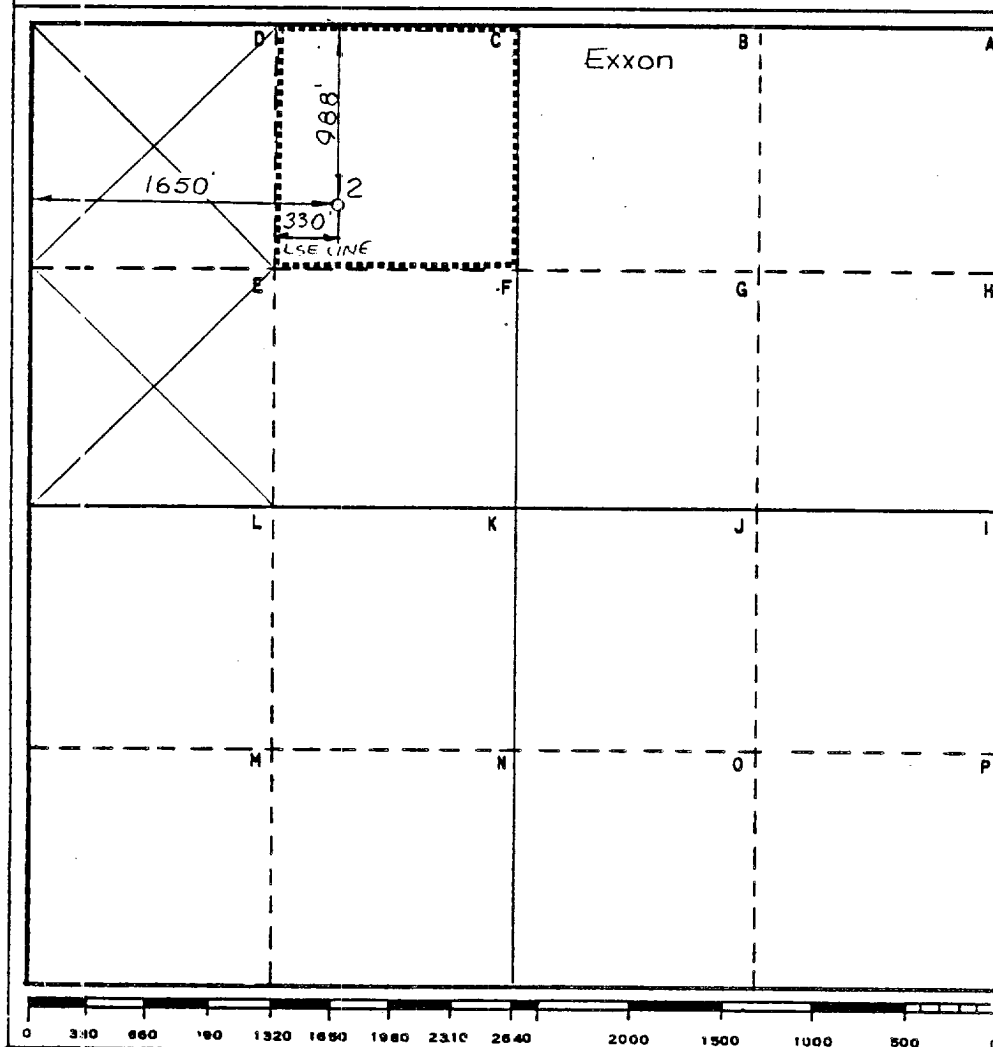
Operator Exxon Corporation		Lease NEW MEXICO "EF" STATE		Well No. 2
Unit Letter C	Section 17	Township 23S	Range 33E	County LEA
Actual Footage Location of Well: 988 feet from the NORTH line and 1650 feet from the WEST line				
Ground Level Elev: 3717'	Producing Formation DELAWARE	Pool UNDESIGNATED CRUZ	Dedicated Acreage: 40 Acres	

1. Outline the acreage dedicated to the subject well by colored pencil or hachure marks on the plat below.
2. If more than one lease is dedicated to the well, outline each and identify the ownership thereof (both as to working interest and royalty).
3. If more than one lease of different ownership is dedicated to the well, have the interests of all owners been consolidated by communitization, unitization, force-pooling, etc?

☐ Yes ☐ No If answer is "yes," type of consolidation _____

If answer is "no," list the owners and tract descriptions which have actually been consolidated. (Use reverse side of this form if necessary.) _____

No allowable will be assigned to the well until all interests have been consolidated (by communitization, unitization, forced-pooling, or otherwise) or until a non-standard unit, eliminating such interests, has been approved by the Commission.



CERTIFICATION

I hereby certify that the information contained herein is true and complete to the best of my knowledge and belief.

Name
Edgar Lunkel

Position
UNIT HEAD

Company Exxon Corporation
Box 1600 Midland, Texas

Date
4-12-84

I hereby certify that the well location shown on this plat was plotted from field notes of actual surveys made by me or under my supervision, and that the same is true and correct to the best of my knowledge and belief.

Date Surveyed
4-5-84

Registered Professional Engineer
and/or Land Surveyor

W. J. Lunkel
Certificate No.
6157

23S Miles SW of OIL CENTER, New Mexico

C.E. Sec. File No. A-8474-A

RECEIVED

APR 16 1984

**O.C.D.
HOBBS OFFICE**

BLOWOUT PREVENTER SPECIFICATION
EQUIPMENT DESCRIPTION

TYPE II-C

All equipment should be at least 3000 psi WP or higher unless otherwise specified.

1. Ball nipple.
2. Hydril or Shaffer bag type preventer.
3. Ram type pressure operated blowout preventer with blind rams.
4. Flanged spool with one 4-inch and one 2-inch (minimum) outlet.
5. 2-inch (minimum) flanged plug or gate valve.
6. 2-inch by 2-inch by 2-inch (minimum) flanged tee.
8. 4-inch flanged gate or plug valve.
9. Ram type pressure operated blowout preventer with pipe rams.
10. Flanged type casing head with one side outlet (furnished by Exxon).
11. 2-inch threaded (or flanged) plug or gate valve (furnished by Exxon).
Flanged on 5000# WP, threaded on 3000# WP or less.
12. Needle valve (furnished by Exxon).
13. 2-inch nipple (furnished by Exxon).
14. Tapped bull plug (furnished by Exxon).
15. 4-inch flanged spacer spool.
16. 4-inch by 2-inch by 2-inch by 2-inch flanged cross.
17. 2-inch flanged plug or gate valve.
18. 2-inch flanged adjustable choke.
19. 2-inch threaded flange.
20. 2-inch XXH nipple.
21. 2-inch forged steel 90° Ell.
22. Cameron (or equal.) threaded pressure gage.
23. Threaded flange.
35. 2-inch flanged tee.
36. 3-inch (minimum) hose. (Furnished by Exxon).
37. Trip tank. (Furnished by Exxon).
38. 2-inch flanged plug or gate valve.
39. 2-1/2-inch pipe, 300' to pit, anchored.
40. 2-1/2-inch SE valve.
41. 2-1/2-inch line to steel pit or separator.

NOTES:

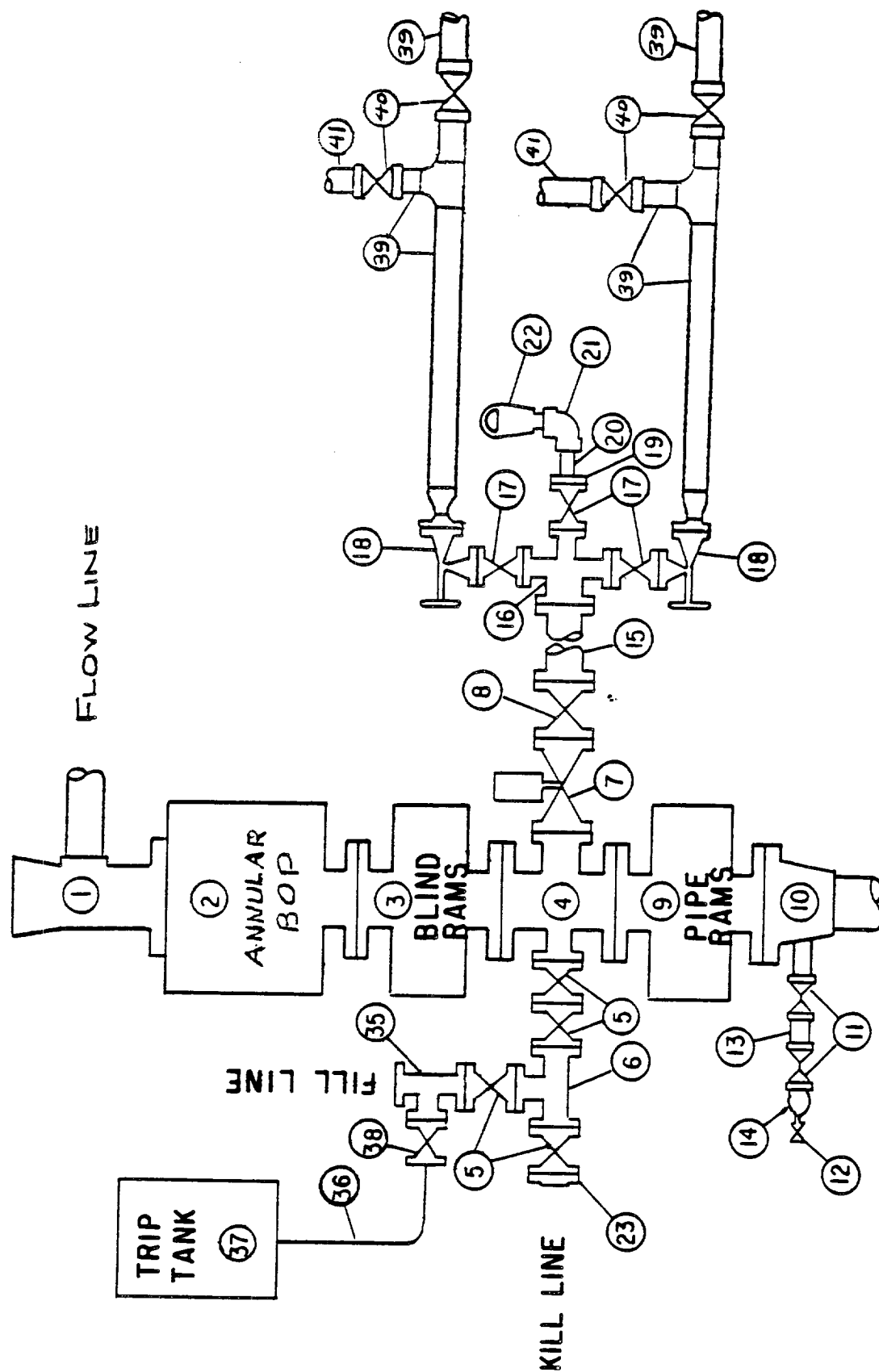
1. Items 3, 4 and 9 may be replaced with double ram type preventer with side outlets
- between the rams.
2. The two valves next to the stack on the fill and kill line to be closed unless drill string is being pulled.
3. Kill line is for emergency use only. This connection shall not be used for filling.
4. Replacement pipe rams and blind rams shall be on location at all times.
5. Only type U, LWS and QRC ram type preventers with secondary seals are acceptable for 5000 psi WP and higher BOP stacks.
6. Type E ram-type BOP's with factory modified side outlets may be used on 3000 psi or lower WP BOP stacks.

RECEIVED

APR 16 1984

U.S. DEPT. OF JUSTICE
FEDERAL BUREAU OF INVESTIGATION

MIDLAND DRILLING ORGANIZATION BLOWOUT PREVENTER SPECIFICATION TYPE II - C



RECEIVED

APR 16 1984

**O.C.D.
HOBBS OFFICE**