

NO. OF COPIES RECEIVED	
DISTRIBUTION	
SANTA FE	
FILE	
U.S.G.S.	
LAND OFFICE	
OPERATOR	

5A. Indicate Type of Lease  
STATE ☒ FEE ☐  
5. State Oil & Gas Lease No.  
V-731

APPLICATION FOR PERMIT TO DRILL, DEEPEN, OR PLUG BACK

1a. Type of Work: b. Type of Well: DRILL <input checked="" type="checkbox"/> DEEPEN <input type="checkbox"/> PLUG BACK <input type="checkbox"/> OIL WELL <input checked="" type="checkbox"/> GAS WELL <input type="checkbox"/> OTHER <input type="checkbox"/> SINGLE ZONE <input checked="" type="checkbox"/> MULTIPLE ZONE <input type="checkbox"/>				7. Unit Agreement Name ---	
2. Name of Operator Exxon Corporation				8. Farm or Lease Name New Mexico EF State	
3. Address of Operator P. O. Box 1600, Midland, Texas 79702				9. Well No. 4	
4. Location of Well UNIT LETTER F LOCATED 1648 FEET FROM THE N LINE AND 1650 FEET FROM THE W LINE OF SEC. 17 TWP. 23S RGE. 33E NMPM				10. Field and Pool, or Wildcat Undesig. Cruz-Delaware	
				12. County Lea	
				19. Proposed Depth 5400'	
				19A. Formation Delaware	
				20. Rotary or C.T. Rotary	
21. Elevations (show whether DF, KT, etc.) 3712 GR		21A. Kind & Status Plug. Bond Blanket		21B. Drilling Contractor Unknown	
				22. Approx. Date Work will start 2nd Qtr. 1984	

23.

PROPOSED CASING AND CEMENT PROGRAM

SIZE OF HOLE	SIZE OF CASING	WEIGHT PER FOOT	SETTING DEPTH	SACKS OF CEMENT	EST. TOP
11 or 12 1/4"	8 5/8"	24#	650'	550	Circulate
7 7/8"	5 1/2 "	14#	5400'	2250	Circ. into
					8 5/8" csg.

Mud Program: 0-650' 8.4+ ppg FW spud mud  
650-5400' 10 ppg brinewater

BOP: 8 5/8" Type II-C, 3000 PSI

APPROVAL VALID FOR 180 DAYS  
PERMIT EXPIRES 10/17/84  
UNLESS DRILLING UNDERWAY

IN ABOVE SPACE DESCRIBE PROPOSED PROGRAM; IF PROPOSAL IS TO DEEPEN OR PLUG BACK, GIVE DATA ON PRESENT PRODUCTIVE ZONE AND PROPOSED NEW PRODUCTIVE ZONE. GIVE BLOWOUT PREVENTER PROGRAM, IF ANY.

hereby certify that the information above is true and complete to the best of my knowledge and belief.

Signed Melba Knippling Title Unit Head Date 4-13-84

(This space for State Use)

ORIGINAL SIGNED BY JERRY SEXTON

APPROVED BY DISTRICT 1 SUPERVISOR TITLE  DATE APR 17 1984

CONDITIONS OF APPROVAL, IF ANY:

**RECEIVED**

**APR 16 1984**

**O.C.D.  
HOBBS OFFICE**

NEW MEXICO OIL CONSERVATION COMMISSION  
WELL LOCATION AND ACREAGE DEDICATION

Form C-102  
Supersedes C-128  
Effective 1-1-65

Operator **Exxon Corporation**

Unit Letter **F** Section **17** Township **23S** Range **33E** County **LEA<sup>TE</sup>** Well No. **4**

Actual Portage Location of Well: **1648** feet from the **NORTH** line and **1650** feet from the **WEST** line

Ground Level Elev: **3712** Producing Formation **DELAWARE** Pool **UNDESIGNATED CRUZ**

1. Outline the acreage dedicated to the subject well by colored pencil or hachure marks on the platage:

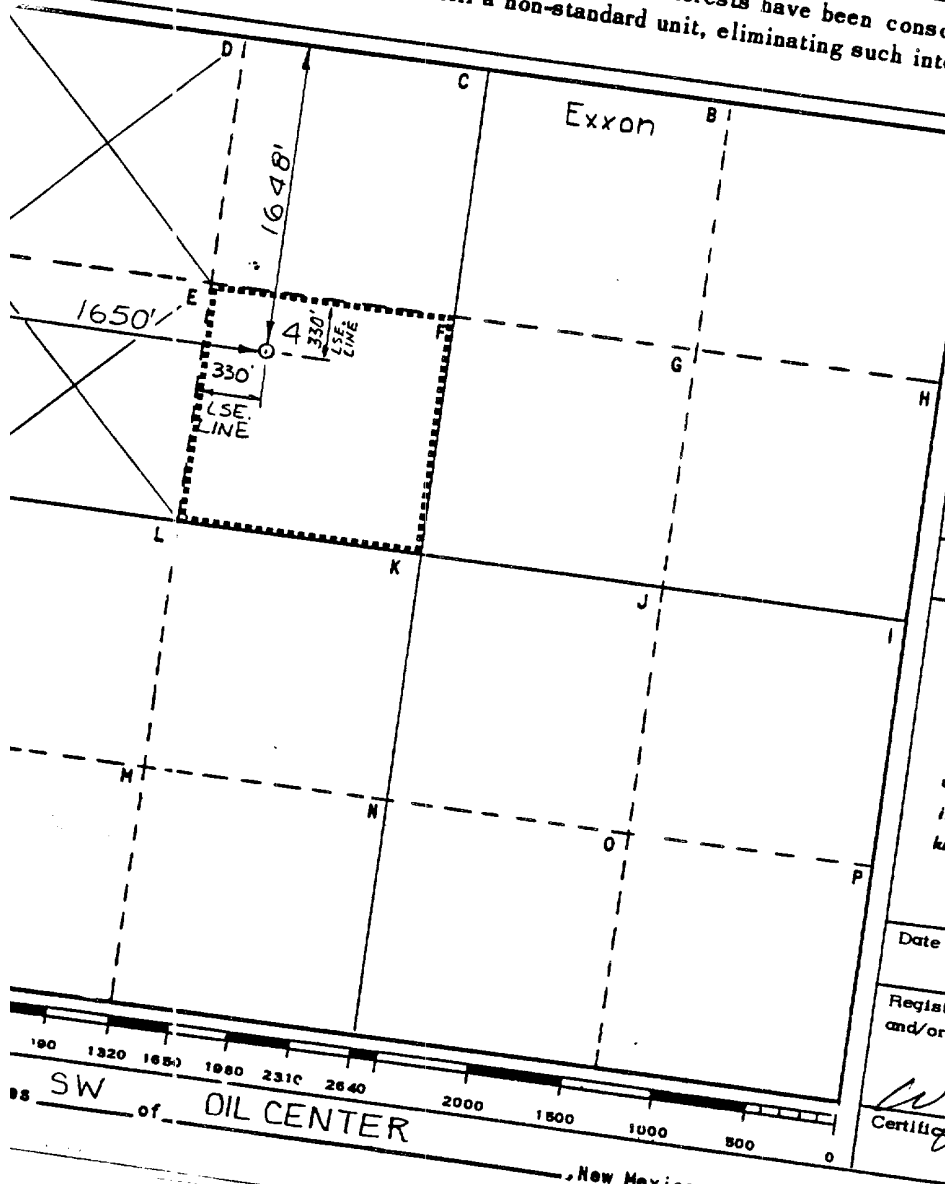
2. If more than one lease is dedicated to the well, outline each and identify the ownership thereof (by Acres interest and royalty).

3. If more than one lease of different ownership is dedicated to the well, have the interests of all owners be dated by communitization, unitization, force-pooling, etc?

☐ Yes ☐ No If answer is "yes," type of consolidation \_\_\_\_\_

If answer is "no," list the owners and tract descriptions which have actually been consolidated. (Use reverse side of this form if necessary.) \_\_\_\_\_

No allowable will be assigned to the well until all interests have been consolidated (by communitization, unitization, forced-pooling, or otherwise) or until a non-standard unit, eliminating such interests, has been approved by the Commission.



**CERTIFICATION**

I hereby certify that the information contained herein is true and complete to the best of my knowledge and belief.

Name **Melba Kripling**

Position **UNIT HEAD**

Company **Exxon Corporation**

Box **1600** Midland, Texas

Date **4-13-84**

I hereby certify that the well location shown on this plat was plotted from field notes of actual surveys made by me or under my supervision, and that the same is true and correct to the best of my knowledge and belief.

Date Surveyed **4-5-84**

Registered Professional Engineer and/or Land Surveyor

Certificate No. **6157**

LOWOUT PREVENTER SPECIFICATIONS  
EQUIPMENT DESCRIPTION

TYPE II-C

All equipment should be at least 3000 psi WP or higher unless

ified.

1. Bell nipple.
2. Hydril or Shaffer bag type preventer.
3. Ram type pressure operated blowout preventer with blind rams.
4. Flanged spool with one 4-inch and one 2-inch (minimum) outlet.
5. 2-inch (minimum) flanged plug or gate valve.
6. 2-inch by 2-inch (minimum) flanged tee.
7. 4-inch pressure operated gate valve.
8. 4-inch flanged gate or plug valve.
9. Ram type pressure operated blowout preventer with pipe rams.
10. Flanged type casing head with one side outlet (furnished by Exxon).
1. 2-inch threaded (or flanged) plug or gate valve (furnished by Exxon).
2. Needle valve (furnished by Exxon).
3. 2-inch nipple (furnished by Exxon).
4. Tapped bull plug (furnished by Exxon).
5. 4-inch flanged spacer spool.
6. 2-inch by 2-inch by 2-inch flanged cross.
7. 2-inch flanged plug or gate valve.
8. 2-inch flanged adjustable choke.
9. 2-inch threaded flange.
10. 2-inch XXH nipple.
1. 2-inch forged steel 90° Ell.
2. Cameron (or equal.) threaded pressure gage.
3. 2-inch threaded flange.
4. 2-inch flanged tee.
5. 2-inch (minimum) hose. (Furnished by Exxon).
6. 2-inch tank. (Furnished by Exxon).
7. 2-inch flanged plug or gate valve.
8. 2-inch pipe, 300' to pit, anchored.
9. 2-inch SE valve.
10. 2-inch line to steel pit or separator.

3, 4 and 9 may be replaced with double ram type preventer with side outlets  
the rams.

valves next to the stack on the fill and kill line to be closed unless drill  
s being pulled.

is for emergency use only. This connection shall not be used for filling.

it pipe rams and blind rams shall be on location at all times.

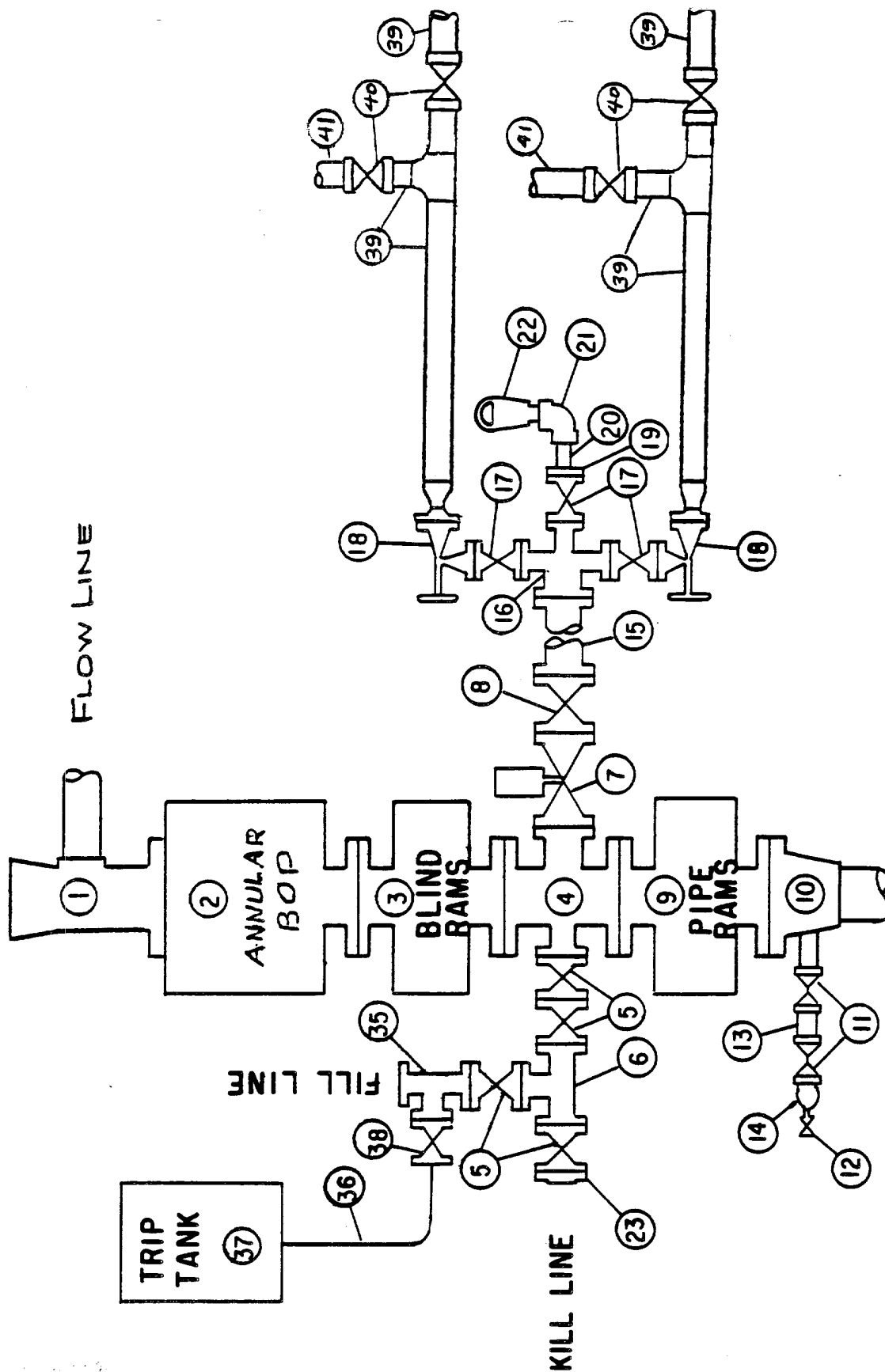
U, LWS and QRC ram type preventers with secondary seals are acceptable for  
' and higher BOP stacks.

type BOP's with factory modified side outlets may be used on 3000 psi or  
' stacks.

# MIDLAND DRILLING ORGANIZATION

## BLOWOUT PREVENTER SPECIFICATION

### TYPE II - C



RECEIVED

APR 13 1966

U.S. DEPARTMENT OF THE INTERIOR  
BUREAU OF LAND MANAGEMENT  
WASHINGTON, D.C. 20250