

STATE OF NEW MEXICO  
ENERGY AND MINERALS DEPARTMENT

OIL CONSERVATION DIVISION  
P. O. BOX 2088  
SANTA FE, NEW MEXICO 87501

30-025-28824

Form C-101  
Revised 10-1-78

NO. OF COPIES RECEIVED	
DISTRIBUTION	
SANTA FE	
FILE	
U.S.G.S.	
LAND OFFICE	
OPERATOR	

5A. Indicate Type of Lease  
STATE ☒ FEE ☐  
5. State Oil & Gas Lease No.  
B-9560

APPLICATION FOR PERMIT TO DRILL, DEEPEN, OR PLUG BACK

1a. Type of Work DRILL <input checked="" type="checkbox"/> DEEPEN <input type="checkbox"/> PLUG BACK <input type="checkbox"/>		7. Unit Agreement Name
b. Type of Well OIL WELL <input checked="" type="checkbox"/> GAS WELL <input type="checkbox"/> OTHER <input type="checkbox"/> SINGLE ZONE <input checked="" type="checkbox"/> MULTIPLE ZONE <input type="checkbox"/>		8. Farm or Lease Name NCT-1 New Mexico "BG" State
2. Name of Operator Texaco Inc.		9. Well No. 6
3. Address of Operator P. O. Box 3109, Midland, Texas 79702		10. Field and Pool, or Wildcat Saunders Permo Upper Penn
4. Location of Well UNIT LETTER 0 LOCATED 660 FEET FROM THE south LINE AND 1980 FEET FROM THE east LINE OF SEC. 14 TWP. 14-S RGE. 33-E NMPM		12. County Lea
19. Proposed Depth 10,100'		19A. Formation Wolfcamp
20. Rotary or C.T. Rotary		
21. Elevations (Show whether DF, RT, etc.) 4188' GR	21A. Kind & Status Plug. Bond -	21B. Drilling Contractor -
22. Approx. Date Work will start August 20, 1984		

23. PROPOSED CASING AND CEMENT PROGRAM

SIZE OF HOLE	SIZE OF CASING	WEIGHT PER FOOT	SETTING DEPTH	SACKS OF CEMENT	EST. TOP
17 1/2"	13-3/8"	48# H-40	525'	600	Circulate
12 1/4"	8-5/8"	24# K-55	4200'	2000	Circulate
		24# S-80			
		28# S-80			
7-7/8"	5 1/2"	17# N-80	10,100'	2150	Circulate
		17# K-55			

CEMENT PROGRAM *See Amended Location*

SURFACE CASING: 600 sxs Class "H" w/2% CaCl (15.6 ppg, 1.18 ft<sup>3</sup>/sx).  
INTERMEDIATE CASING: 1800 sxs Light Weight w/15# salt and 1/4# flocele (12.7 ppg, 2.10 ft<sup>3</sup>/sx) followed by 200 sxs Class "H" w/1/4# flocele (15.6 ppg, 1.18 ft<sup>3</sup>/sx).  
PRODUCTION CASING: 1ST STAGE: 750 sxs Light Weight w/1/4# flocele, (12.3 ppg, 2.00 ft<sup>3</sup>/sx) followed by 200 sxs 50-50 Pozmix Class "H" w/1/4# flocele and 0.8% HALAD-9 (13.6 ppg, 1.40 ft<sup>3</sup>/sx). DV Tool at 7000' (Displacement type).  
2ND STAGE: 1200 sxs Light Weight w/1/4# flocele (12.3 ppg, 2.00 ft<sup>3</sup>/sx).

IN ABOVE SPACE DESCRIBE PROPOSED PROGRAM; IF PROPOSAL IS TO DEEPEN OR PLUG BACK, GIVE DATA ON PRESENT PRODUCTIVE ZONE AND PROPOSED NEW PRODUCTIVE ZONE. GIVE BLOWOUT PREVENTER PROGRAM, IF ANY.

I hereby certify that the information above is true and complete to the best of my knowledge and belief.  
Signed *Russell E. Sexton* Russell E. Sexton Title Engineer's Assistant Date July 24, 1984

(This space for State Use)

ORIGINAL SIGNED BY JERRY SEXTON

APPROVED BY DISTRICT 1 SUPERVISOR TITLE DATE JUL 27 1984

CONDITIONS OF APPROVAL, IF ANY:

APPROVAL VALID FOR 120 DAYS  
PERMIT EXPIRES 10-30-84  
UNLESS DRILLING UNDERWAY

NEW MEXICO OIL CONSERVATION COMMISSION  
WELL LOCATION AND ACREAGE DEDICATION PLAT

Form C-102  
Supersedes C-128  
Effective 1-1-65

All distances must be from the outer boundaries of the Section.

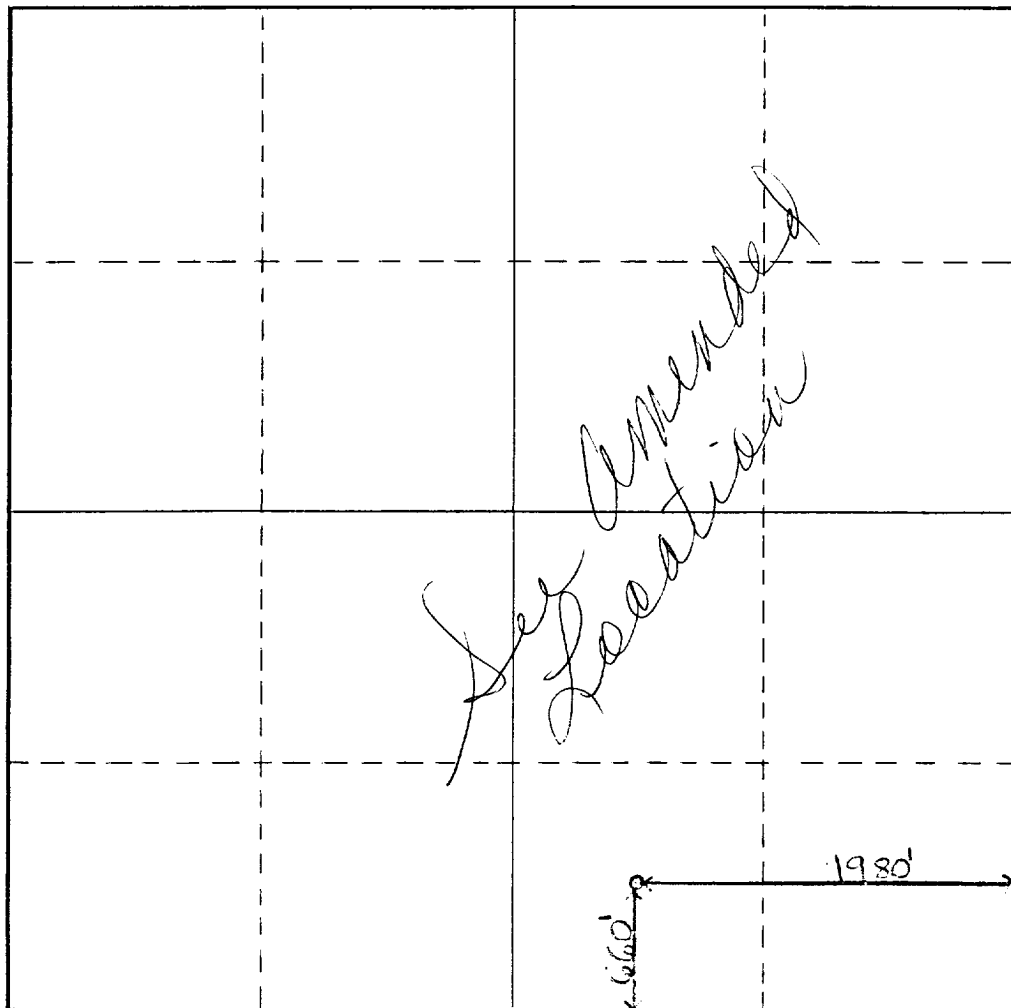
Operator <b>Texaco Inc.</b>			Lease <b>New Mexico "BG" State NCT-1</b>		Well No. <b>6</b>
Unit Letter <b>0</b>	Section <b>14</b>	Township <b>14-S</b>	Range <b>33-E</b>	County <b>Lea</b>	
Actual Footage Location of Well: <b>660</b> feet from the <b>south</b> line and <b>1980</b> feet from the <b>east</b> line					
Ground Level Elev. <b>4188'</b>	Producing Formation <b>Wolfcamp</b>		Pool <b>Saunders Permo Upper Penn</b>		Dedicated Acreage: <b>40</b> Acres

- Outline the acreage dedicated to the subject well by colored pencil or hachure marks on the plat below.
- If more than one lease is dedicated to the well, outline each and identify the ownership thereof (both as to working interest and royalty).
- If more than one lease of different ownership is dedicated to the well, have the interests of all owners been consolidated by communitization, unitization, force-pooling, etc?

☐ Yes ☐ No If answer is "yes," type of consolidation \_\_\_\_\_

If answer is "no," list the owners and tract descriptions which have actually been consolidated. (Use reverse side of this form if necessary.) \_\_\_\_\_

No allowable will be assigned to the well until all interests have been consolidated (by communitization, unitization, forced-pooling, or otherwise) or until a non-standard unit, eliminating such interests, has been approved by the Commission.



CERTIFICATION

I hereby certify that the information contained herein is true and complete to the best of my knowledge and belief.

*Russell E. Sexton*

Name  
**Russell E. Sexton**  
Position  
**Engineer's Assistant**

Company  
**Texaco Inc.**

Date  
**July 24, 1984**

I hereby certify that the well location shown on this plat was plotted from field notes of actual surveys made by me or under my supervision, and that the same is true and correct to the best of my knowledge and belief.

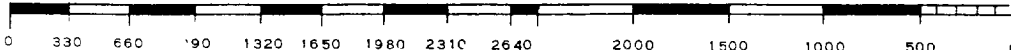
**July 18, 1984**

Date Surveyed

Registered Professional Engineer  
and/or Land Surveyor

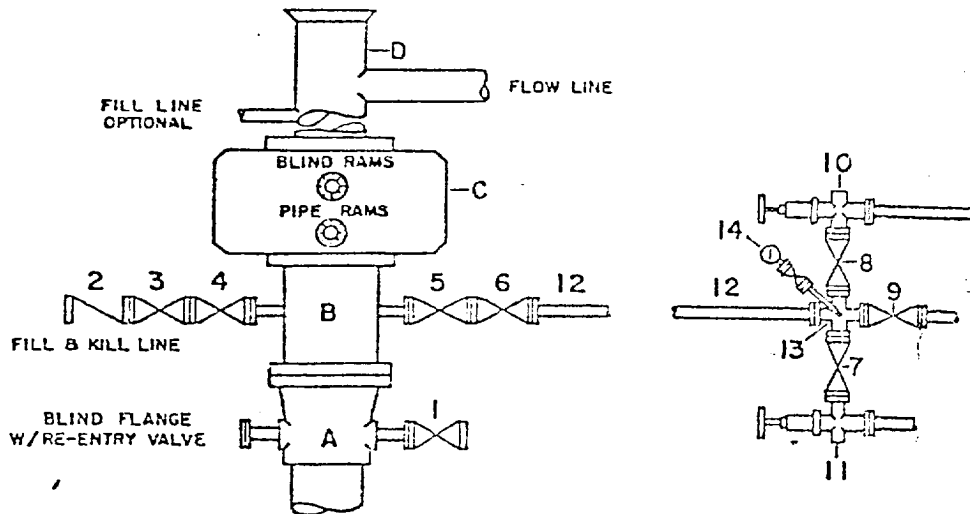
*B. L. Eiland*  
**B. L. Eiland #4386**

Certificate No.



**DRILLING CONTROL**  
**CONDITION II-3000 PSI WP**

H<sub>2</sub>S TRIM REQUIRED  
YES \_\_\_\_\_ NO \_\_\_\_\_



DRILLING CONTROL

MATERIAL LIST - CONDITION II

- |           |   |
|-----------|---|
| A         | Texaco Wellhead   |
| B         | 3000# W.P. drilling spool with a 2" minimum flanged outlet for kill-line and 3" minimum flanged outlet for choke line   |
| C         | 3000# W.P. Dual ram type preventer, hydraulic operated with 1" steel, 3000# W.P. control lines (where sub-structure height is adequate, 2-3000# W.P. single ram type preventers may be utilized.) |
| D         | Bell nipple with flowline and fill-up outlets. (Kill line may also be used for fill-up line.)   |
| 1,3,4,7,8 | 2" minimum 3000# W.P. flanged full opening steel gate valve, or Halliburton Lo Torc Plug valve.   |
| 2         | 2" minimum 3000# W.P. back pressure valve   |
| 5,6,9     | 3" minimum 3000# W.P. flanged full opening steel gate valve, or Halliburton Lo Torc Plug valve.   |
| 12        | 3" minimum schedule 80, Grade "B", seamless line pipe   |
| 13        | 2" minimum x 3" minimum 3000# W.P. flanged cross  |
| 10, 11    | 2" minimum 3000# W.P. adjustable choke bodies   |
| 14        | Cameron fluid Gauge or equivalent (location optional in choke line.)  |



TEXACO, INC  
PRODUCING DEPARTMENT  
MIDLAND, TEXAS



SCALE	DATE	REV. NO.	DRG. NO.
DRAWN BY			
CHECKED BY			
APPROVED BY			

**EXHIBIT B**