

NEW MEXICO OIL CONSERVATION COMMISSION
WELL LOCATION AND ACREAGE DEDICATION PLAT

Form C-102
Supersedes C-120
Effective 1-1-83

All distances must be from the outer boundaries of the Section.

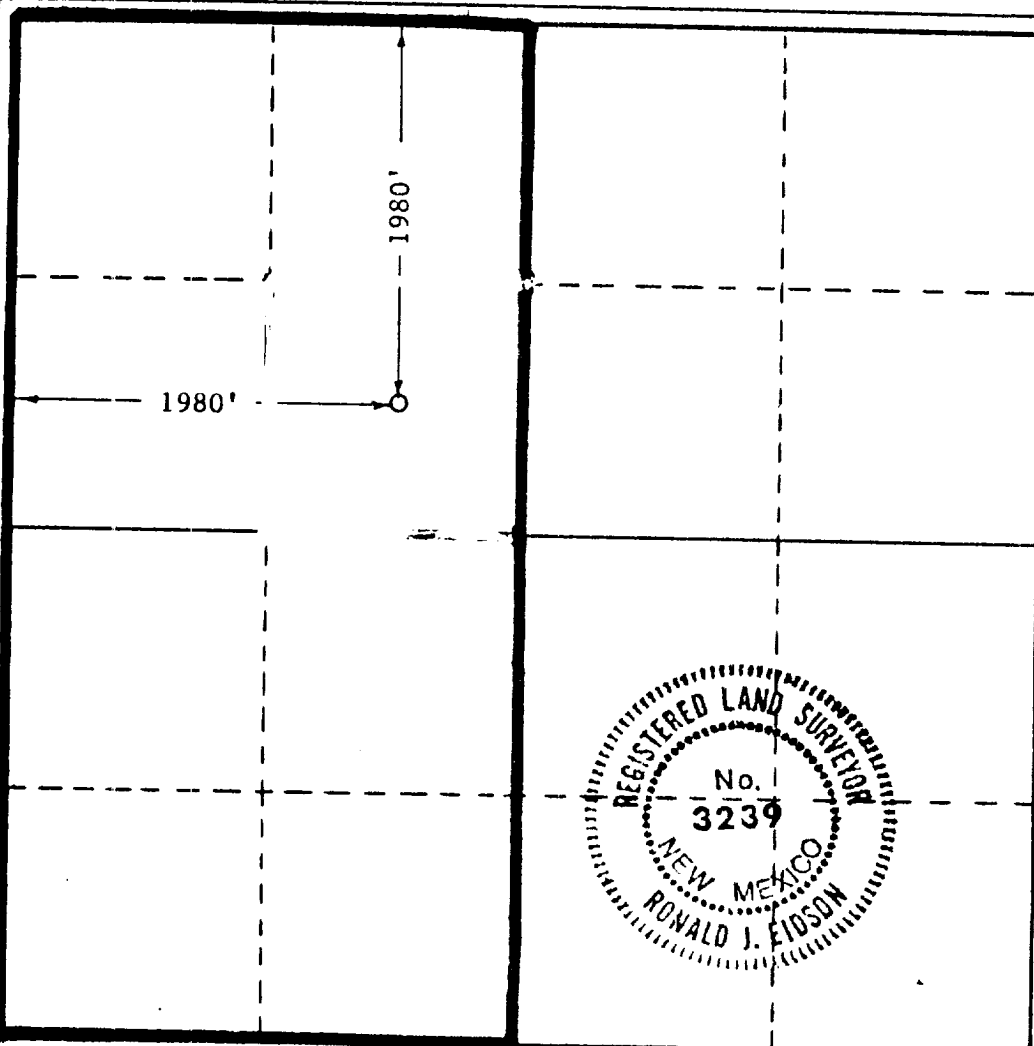
Operator Perry R. Bass BASS ENTERPRISES PRODUCTION CO.		Lease MADERA FEDERAL		Well No. 1
Unit Letter F	Section 24	Township 24-S	Range 33-E	County Lea
Actual Footage Location of Well: 1980 feet from the North line and 1980 feet from the West line				
Ground Level Elev. 3576.9'	Producing Formation Morrow	Pool BELL LAKE MORROW	Dedicated Acreage: 320 Acres	

1. Outline the acreage dedicated to the subject well by colored pencil or hachure marks on the plat below.
2. If more than one lease is dedicated to the well, outline each and identify the ownership thereof (both as to working interest and royalty).
3. If more than one lease of different ownership is dedicated to the well, have the interests of all owners been consolidated by communitization, unitization, force-pooling, etc?

☐ Yes ☐ No If answer is "yes," type of consolidation _____

If answer is "no," list the owners and tract descriptions which have actually been consolidated. (Use reverse side of this form if necessary.) _____

No allowable will be assigned to the well until all interests have been consolidated (by communitization, unitization, forced-pooling, or otherwise) or until a non-standard unit, eliminating such interests, has been approved by the Commission.



CERTIFICATION

I hereby certify that the information contained herein is true and complete to the best of my knowledge and belief.

Jim D. Robinson
Name

JIM D. ROBINSON
Position

DRILLING FOREMAN
Company

BASS ENTERPRISES PROD CO.
Date

JULY 31, 1984

I hereby certify that the well location shown on this plat was plotted from field notes of actual surveys made by me or under my supervision, and that the same is true and correct to the best of my knowledge and belief.

Date Surveyed
July 30, 1984

Registered Professional Engineer and/or Land Surveyor

Ronald J. Eidson
Certificate No. **JOHN W. WEST 878**
PATRICK A. ROMERO 888
Ronald J. Eidson 3239

0 320 640 960 1280 1600 1920 2240 2560 2880 3200 3520 3840 4160 4480 4800 5120 5440 5760 6080 6400

RECEIVED

AUG 29 1984

C.F.B.
HONORARY OFFICE