

STATE OF NEW MEXICO
ENERGY AND MINERALS DEPARTMENT

OIL CONSERVATION DIVISION

P. O. BOX 2088
SANTA FE, NEW MEXICO 87501

Form C-101
Revised 10-1-78

NO. OF COPIES RECEIVED	
DISTRIBUTION	
SANTA FE	
FILE	
U.S.G.S.	
LAND OFFICE	
OPERATOR	

5A. Indicate Type of Lease
STATE ☒ FCC ☐

5. State Oil & Gas Lease No.
B-9385

APPLICATION FOR PERMIT TO DRILL, DEEPEN, OR PLUG BACK

1a. Type of Work DRILL <input checked="" type="checkbox"/> DEEPEN <input type="checkbox"/> PLUG BACK <input type="checkbox"/>		7. Unit Agreement Name
b. Type of Well OIL WELL <input checked="" type="checkbox"/> GAS WELL <input type="checkbox"/> OTHER <input type="checkbox"/> SINGLE ZONE <input checked="" type="checkbox"/> MULTIPLE ZONE <input type="checkbox"/>		8. Farm or Lease Name New Mexico "AN" State
2. Name of Operator Texaco Inc.		9. Well No. 13
3. Address of Operator P. O. Box 3109, Midland, Texas 79702		10. Field and Pool, or Wildcat Saunders Permo U. Penn
4. Location of Well UNIT LETTER B LOCATED 660 FEET FROM THE North LINE AND 1980 FEET FROM THE East LINE OF SEC. 22 TWP. 14-S RGE. 33-E NMPM		12. County Lea
19. Proposed Depth 10,100'		19A. Formation Permo Upper Penn
20. Rotary or C.T. Rotary		
21. Elevations (Show whether DF, KT, etc.) 4206' GR	21A. Kind & Status Plug. Bond -	21B. Drilling Contractor -
22. Approx. Date Work will start October 1, 1984		

23.

PROPOSED CASING AND CEMENT PROGRAM

SIZE OF HOLE	SIZE OF CASING	WEIGHT PER FOOT	SETTING DEPTH	SACKS OF CEMENT	EST. TOP
17 1/2"	13 3/8"	48#, H-40	525'	600	Circulate
12 1/4"	8 5/8"	24#, K-55	4200'	2000	Circulate
		24#, S-80			
		28#, S-80			
7 7/8"	5 1/2"	17#, N-80	10,100'	2150	Circulate
		17#, K-55			

CEMENT PROGRAM

- SURFACE CASING: 600 sacks Class "H" w/2% CaCl (15.6 ppg, 1.18 ft³/sack).
- INTERMEDIATE CASING: 1800 sacks Light Weight w/15# salt and 1/4# flocele (12.7 ppg, 2.10 ft³/sack) followed by 200 sacks Class "H" w/1/4# flocele (15.6 ppg, 1.18 ft³/sack).
- PRODUCTION CASING: 1st Stage: 750 sacks Light Weight w/1/4# flocele, (12.3 ppg, 2.00 ft³/sack) followed by 200 sacks 50-50 Pozmix Class "H" w/1/4# flocele and 0.8% HALAD-9 (13.6 ppg, 1.40 ft³/sack). DV Tool at 7000' (Displacement type).
2nd Stage: 1200 sacks Light Weight W/1/4# flocele (12.3 ppg, 2.00 ft³/sack).

IN ABOVE SPACE DESCRIBE PROPOSED PROGRAM; IF PROPOSAL IS TO DEEPEN OR PLUG BACK, GIVE DATA ON PRESENT PRODUCTIVE ZONE AND PROPOSED NEW PRODUCTIVE ZONE. GIVE BLOWOUT PREVENTER PROGRAM, IF ANY.

I hereby certify that the information above is true and complete to the best of my knowledge and belief.

Signed Russell E. Sexton Title Engineer's Asst. Date 9-14-84

(This space for State Use)

ORIGINAL SIGNED BY RUSSELL E. SEXTON

APPROVED BY DISTRICT 1 SUPERVISOR

TITLE

DATE

CONDITIONS OF APPROVAL, IF ANY:

SEP 18 1984

APPROVAL VALID FOR 180 DAYS
PERMIT EXPIRES 3/18/85
UNLESS DRILLING UNDERWAY

NEW MEXICO OIL CONSERVATION COMMISSION
WELL LOCATION AND ACREAGE DEDICATION PLAT

Form C-102
Supersedes C-128
Effective 1-1-65

All distances must be from the outer boundaries of the Section.

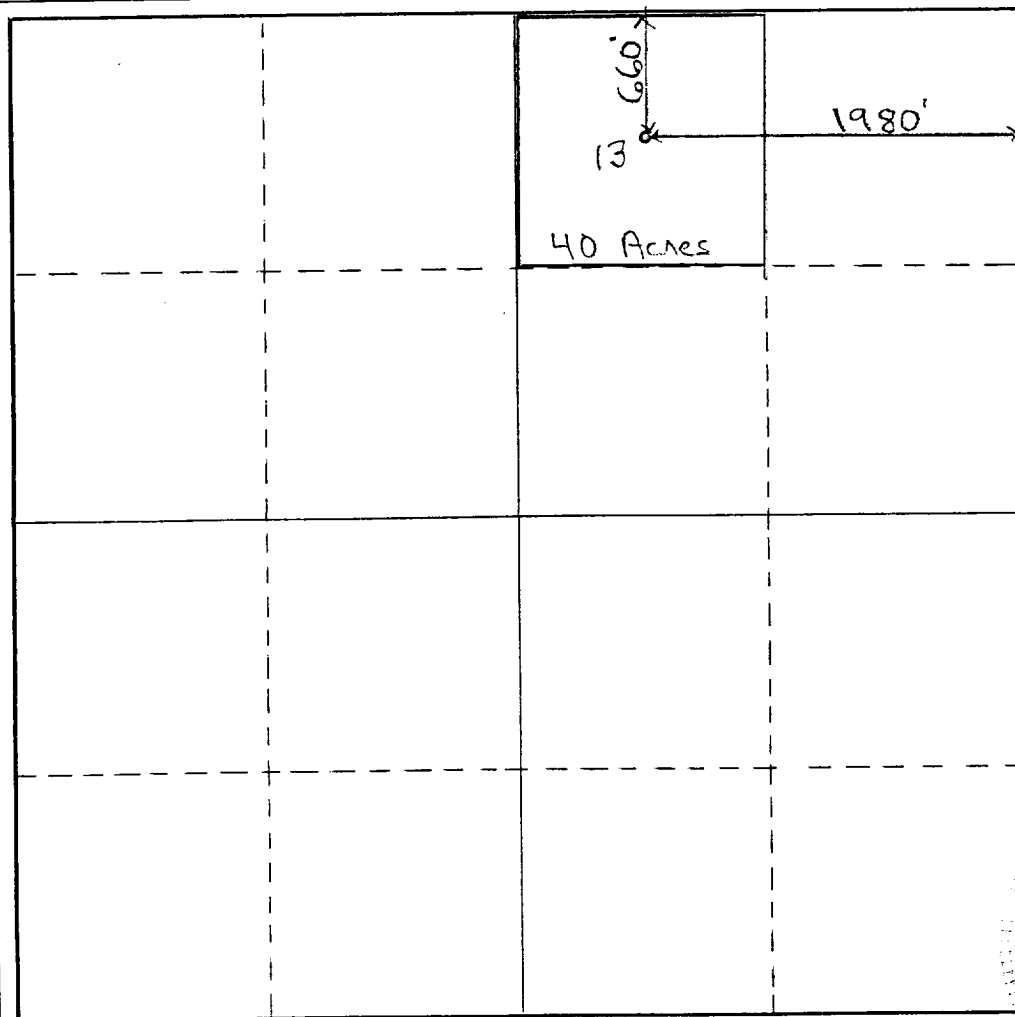
Operator Texaco Inc.			Lease New Mexico "AN" State		Well No. 13
Unit Letter B	Section 22	Township 14-S	Range 33-E	County Lea	
Actual Footage Location of Well: 660 feet from the North line and 1980 feet from the East line					
Ground Level Elev. 4206'	Producing Formation Permo Upper Penn		Pool Saunders Permo Upper Penn		Dedicated Acreage: 40 Acres

- Outline the acreage dedicated to the subject well by colored pencil or hatchure marks on the plat below.
- If more than one lease is dedicated to the well, outline each and identify the ownership thereof (both as to working interest and royalty).
- If more than one lease of different ownership is dedicated to the well, have the interests of all owners been consolidated by communitization, unitization, force-pooling, etc?

☐ Yes ☐ No If answer is "yes," type of consolidation _____

If answer is "no," list the owners and tract descriptions which have actually been consolidated. (Use reverse side of this form if necessary.) _____

No allowable will be assigned to the well until all interests have been consolidated (by communitization, unitization, forced-pooling, or otherwise) or until a non-standard unit, eliminating such interests, has been approved by the Commission.



CERTIFICATION

I hereby certify that the information contained herein is true and complete to the best of my knowledge and belief.

Russell E. Sexton
Name

Russell E. Sexton
Position

Engineer's Asst.
Company

Texaco Inc.
Date

9-14-84

I hereby certify that the well location shown on this plat was plotted from field notes of actual surveys made by me or under my supervision, and that the same is true and correct to the best of my knowledge and belief.

Date Surveyed
8-17-84
Registered Professional Engineer
and/or Land Surveyor

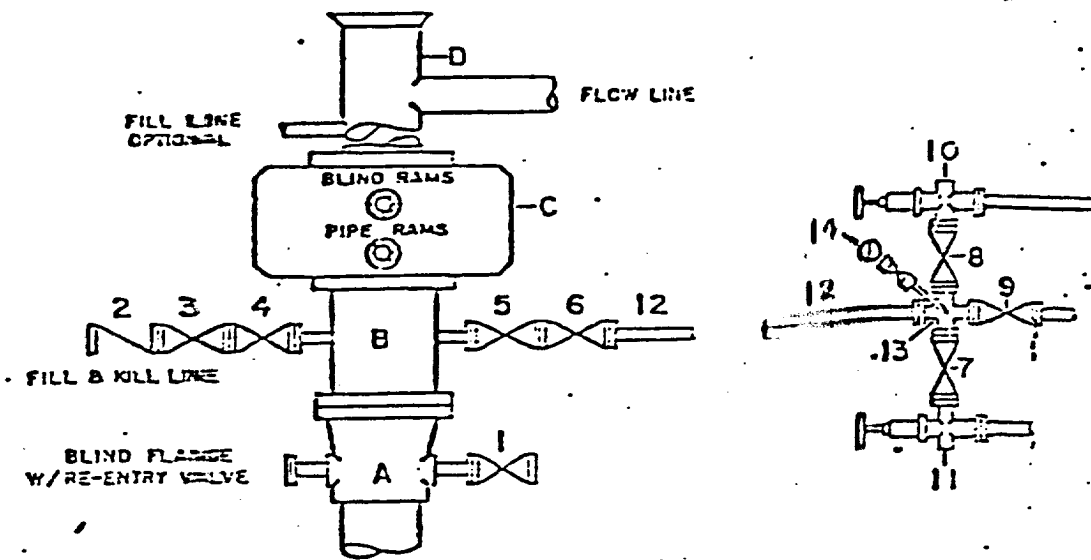
B. L. Eiland
B. L. Eiland
Certificate No.

4386

0 330 660 990 1320 1650 1980 2310 2640 2970 3300 3630 3960 4290 4620 4950 5280 5610 5940 6270 6600

DRILLING CONTROL CONDITION II-3000 PSI WP

HIGH TRIM REQUIRED
YES _____ NO _____



DRILLING CONTROL

MATERIAL LIST - CONDITION II

- A Texaco Wellhead
- B 3000# W.P. drilling spool with a 2" minimum flanged outlet for kill-line and 3" minimum flanged outlet for choke line
- C 3000# W.P. Dual ram type preventer, hydraulically operated with 1" steel, 3000# W.P. control lines (if sub-structure height is adequate, 2-3000# W.P. single ram type preventers may be utilized.)
- D Bell nipple with flowing and fill-up nipples. (Kill line may also be used for fill-up line.)
- 1,3,4, 2" minimum 3000# W.P. flanged full opening seal gate valve, or Halliburton Lo Torc Plug valve
- 7,8
- 2 2" minimum 3000# W.P. back pressure valve
- 3,4,9 3" minimum 3000# W.P. flanged full opening seal gate valve, or Halliburton Lo Torc Plug valve
- 12 3" minimum schedule 80, Grade "A", seamless line pipe
- 13 2" minimum x 3" minimum 3000# W.P. flanged cross
- 10, 11 2" minimum 3000# W.P. adjustable choke tooling
- 14 Cameron Mud Gauge or equivalent (location optional in choke line.)



TEXACO, INC.
PACIFIC DIVISION
HOUSTON, TEXAS

