

NL MEXICO OIL CONSERVATION COMMISS
WELL LOCATION AND ACREAGE DEDICATION PLAT

Form C-102
Supersedes C-128
Effective 1-1-65

All distances must be from the outer boundaries of the Section.

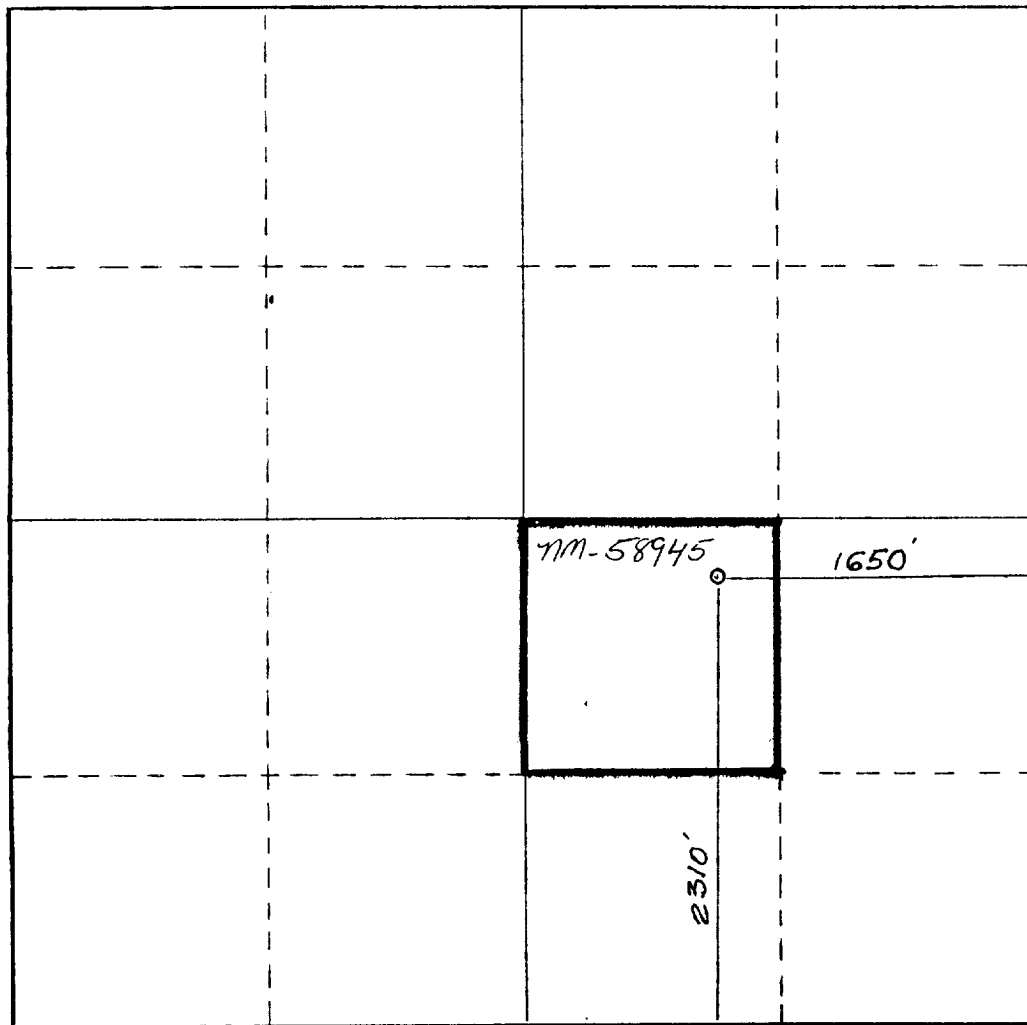
| | | | | | |
|--|--|-----------------------------|------------------------------------|----------------------|---------------------------------------|
| Operator YATES PETROLEUM CORPORATION | | | Lease Raptor ABG Federal | | Well No. 1 |
| Unit Letter J | Section 23 | Township 19 South | Range 34 East | County Lea | |
| Actual Footage Location of Well. 2310 feet from the South line and 1650 feet from the East line | | | | | |
| Ground Level Elev. 3799. | Producing Formation San Andres | | Pool Lea San Andres | | Dedicated Acreage; 40 Acres |

1. Outline the acreage dedicated to the subject well by colored pencil or hachure marks on the plat below.
2. If more than one lease is dedicated to the well, outline each and identify the ownership thereof (both as to working interest and royalty).
3. If more than one lease of different ownership is dedicated to the well, have the interests of all owners been consolidated by communitization, unitization, force-pooling, etc?

☐ Yes ☒ No If answer is "yes," type of consolidation _____

If answer is "no," list the owners and tract descriptions which have actually been consolidated. (Use reverse side of this form if necessary.) _____

No allowable will be assigned to the well until all interests have been consolidated (by communitization, unitization, forced-pooling, or otherwise) or until a non-standard unit, eliminating such interests, has been approved by the Commission.



CERTIFICATION

I hereby certify that the information contained herein is true and complete to the best of my knowledge and belief.

Cy Cowan
Name
Cy Cowan

Position
Regulatory Agent

Company
Yates Petroleum Corporation

Date
12/3/84

DAN R. REDDY
I hereby certify that the well location shown on this plat was plotted from field notes of actual surveys made by me or under my supervision and that the same is true and correct to the best of my knowledge and belief.
PROFESSIONAL ENGINEER

Date Surveyed
November 28, 1984

Registered Professional Engineer and/or Land Surveyor

Dan R. Reddy

Certificate No.
NM PE&LS NO. 5412

