

OIL CONSERVATION DIVISION  
P.O. BOX 2088  
SANTA FE, NEW MEXICO 87501

30-025-29625

Form C-101  
Revised 10-1-78

NO. OF COPIES RECEIVED	
DISTRIBUTION	
SANTA FE	
FILE	
U.S.G.S.	
LAND OFFICE	
OPERATOR	

5A. Indicate Type of Lease  
STATE ☒ FEE ☐  
6. State Oil & Gas Lease No.  
**V-343**

APPLICATION FOR PERMIT TO DRILL, DEEPEN, OR PLUG BACK

a. Type of Work  
b. Type of Well  
OIL WELL ☒ GAS WELL ☐ OTHER ☐  
c. Name of Operator  
**AMOCO PRODUCTION COMPANY**  
d. Address of Operator  
**P.O. BOX 68 HOBBS, NEW MEXICO 88240**  
e. Location of Well  
UNIT LETTER **G** LOCATED **1980** FEET FROM THE **North** LINE  
**1980** FEET FROM THE **East** LINE OF SEC. **6** TWP. **17-S** RGE. **33-E**  
f. Proposed Depth  
**11900'**  
g. Formation  
**Holcamp**  
h. Rotary or C.T.  
**Rotary**  
i. Elevation (show whether DT, RL, etc.)  
**4233.0' GR**  
j. Kind & Status Plug. Bond  
**Blanket-on-file**  
k. Drilling Contractor  
**NA**  
l. Approx. Date Work will start

PROPOSED CASING AND CEMENT PROGRAM

SIZE OF HOLE	SIZE OF CASING	WEIGHT PER FOOT	SETTING DEPTH	SACKS OF CEMENT	EST. TOP
17 1/2"	13 3/8"	54.5#	400'	Circ. to surface	surface
12 1/4" or 11"	8 5/8"	32.0#	4500'	Tie back to 13 3/8"	460'
7 7/8"	5 1/2"	15.5# x 17#	11900'	Tie back to 500' above Holcamp	10220'

Propose to drill and equip well in the Holcamp formation. After reaching TD, logs will be run and evaluated. Perforate and stimulate as necessary in attempting commercial production.

Mud Program: 0-400' Native Spud Mud  
400-4500' Brine  
4500-TD Cut Brine

BOP Diagram Attached.

0+5: NMOC-D-HOBBS, 1-JRB-Hov 1-FJN-Hov - 1 BAO

BOVE SPACE DESCRIBE PROPOSED PROGRAM: IF PROPOSAL IS TO DEEPEN OR PLUG BACK, GIVE DATA ON PRESENT PRODUCTIVE ZONE AND PROPOSED NEW PRODUCTIVE ZONE. GIVE BLOWOUT PREVENTER PROGRAM, IF ANY.

I hereby certify that the information above is true and complete to the best of my knowledge and belief.  
By K. H. Ottwell Title Administrative Analyst Date 2-6-86

(This space for State Use)

ORIGINAL SIGNED BY JERRY SEXTON  
APPROVED BY DISTRICT 1 SUPERVISOR TITLE  DATE FEB 11 1986

CONDITIONS OF APPROVAL, IF ANY:

Permit Expires 6 Months From Approval  
Date Under Drilling Authority

RECEIVED  
FEB -7 1986  
O.C.P.  
HOBBY OFFICE

NEW MEXICO OIL CONSERVATION COMMISSION  
WELL LOCATION AND ACREAGE DEDICATION PLAT

Form C-102  
Supersedes C-128  
Effective 1-1-65

All distances must be from the outer boundaries of the Section.

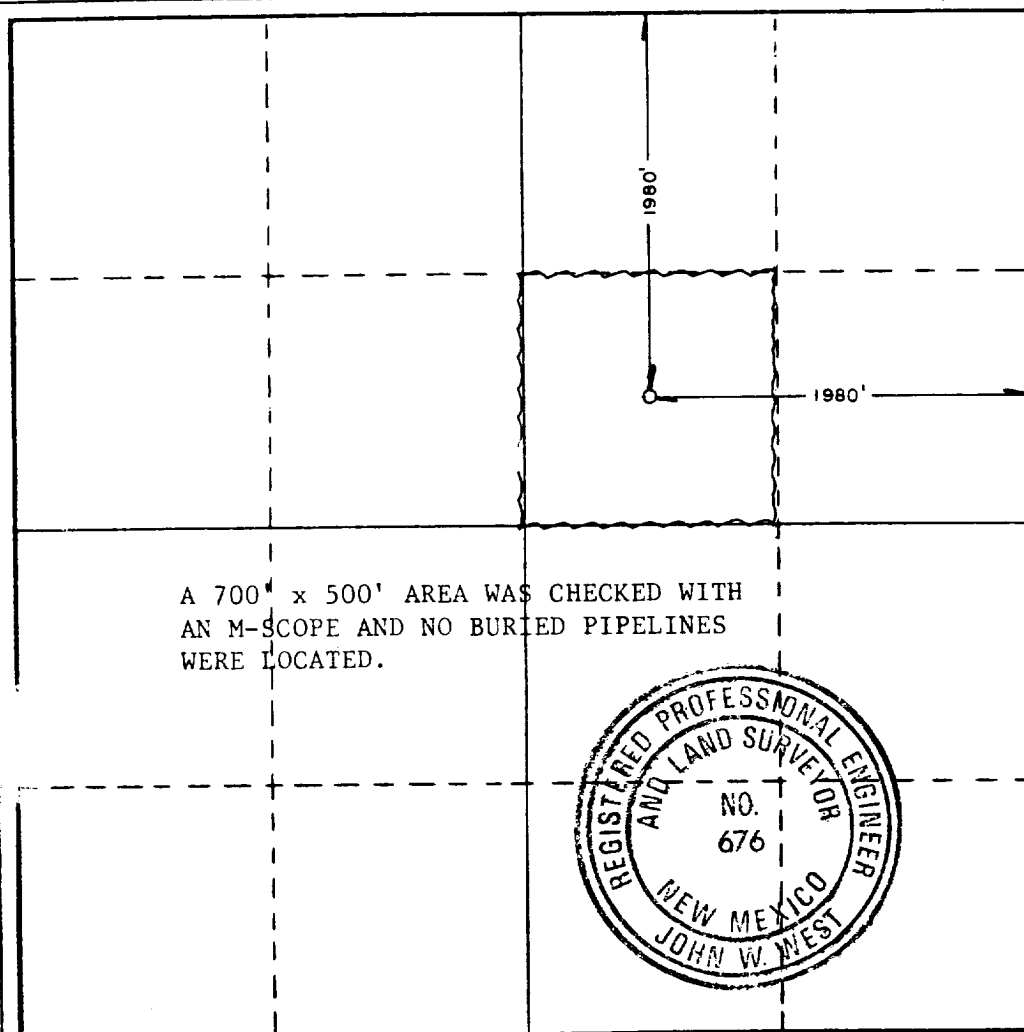
Operator AMOCO PRODUCTION COMPANY		Lease STATE HD		Well No. 1
Unit Letter G	Section 6	Township 17 SOUTH	Range 33 EAST	County LEA
Actual Footage Location of Well: 1980 feet from the NORTH line and 1980 feet from the EAST line				
Ground Level Elev. 4233.0'	Producing Formation <i>Holcamp</i>	Pool <i>Maljamar Holcamp</i>	Dedicated Acreage: 40 Acres	

1. Outline the acreage dedicated to the subject well by colored pencil or hatchure marks on the plat below.
2. If more than one lease is dedicated to the well, outline each and identify the ownership thereof (both as to working interest and royalty).
3. If more than one lease of different ownership is dedicated to the well, have the interests of all owners been consolidated by communitization, unitization, force-pooling, etc?

☐ Yes ☐ No If answer is "yes," type of consolidation \_\_\_\_\_

If answer is "no," list the owners and tract descriptions which have actually been consolidated. (Use reverse side of this form if necessary.) \_\_\_\_\_

No allowable will be assigned to the well until all interests have been consolidated (by communitization, unitization, forced-pooling, or otherwise) or until a non-standard unit, eliminating such interests, has been approved by the Commission.



CERTIFICATION

I hereby certify that the information contained herein is true and complete to the best of my knowledge and belief.

7  
Name  
*B. A. Ottwell*  
Position  
*Asst. Adm. Analyst*  
Company  
*Amoco Production Company*  
Date  
*2-6-86*

I hereby certify that the well location shown on this plat was plotted from field notes of actual surveys made by me or under my supervision, and that the same is true and correct to the best of my knowledge and belief.

Date Surveyed  
FEBRUARY 3, 1986

Registered Professional Engineer and/or Land Surveyor

*John W. West*

Certificate No. JOHN W. WEST, 676  
RONALD J. EIDSON, 3239

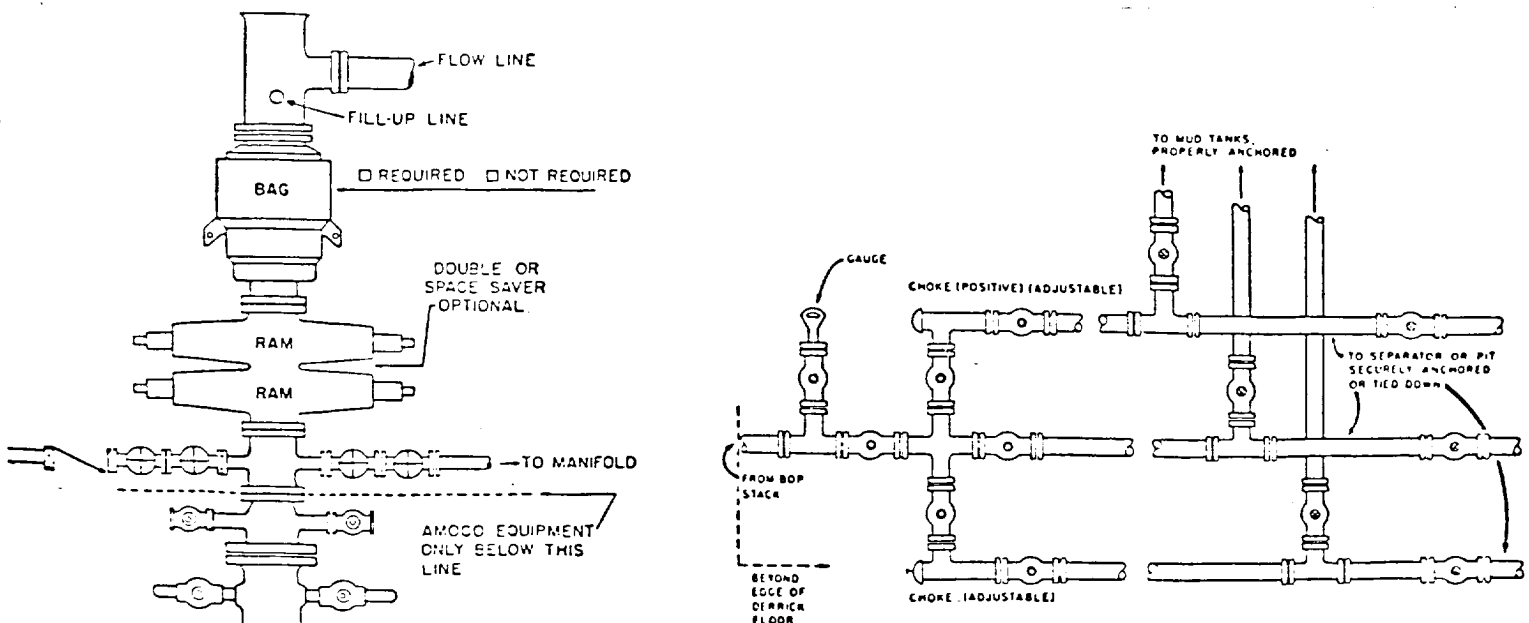
RECEIVED  
FEB - 7 1986  
O.S.D.  
HOBBS OFFICE

1. BOP's to be used operated. BOP's and all fittings must be in good condition and rated at 3000 psi w.p. minimum.
2. Equipment through which bit must pass shall be at least as large as casing size being drilled through.
3. Upper Kelly cock is required and shall be 3000 psi w.p. minimum. Lower Kelly cock is (required)(not required).
4. Hydril or comparable safety valve shall be available on rig floor with connection or subs to fit any tool joint in the string. Valve to be full bore 5000 psi w.p. minimum.
5. Hydril or equivalent drill pipe back pressure valve is (required)(not required).
6. All equipment upstream of chokes, including kill line equipment shall be flanged or clamped and of a test pressure no less than that of the blowout preventer. All valves upstream of choke shall be (3") (4") gate valves Cameron Type "F" or equivalent. All equipment downstream of chokes may be flanged or screw end gate or plug. Line from spool to manifold cross to be a minimum of 3" straight and short as possible with minimum bends. Other lines may be 2", 3" or 4". Choke manifold, beyond second valve from cross, must be positioned outside of substructure. Manifold, header and all lines must be adequately supported and properly anchored. Two inch (2") lines and valves are permitted on the kill line. All valves designated for H<sub>2</sub>S service are (required) (not required).
7. Blowout preventer closing unit equipment to include accumulator capable of closing, opening and closing the bag and pipe rams with a minimum remaining pressure of 1200 psi. After closure, the remaining fluid volume will be at least 50 percent of original volume. Two independent sources of pump power are required on each closing unit installation and shall meet all IADC specifications. Operating time for closing unit shall not be greater than one minute with charging pump shut down. Time test must be witnessed by Amoco representative while nipping up and test results reported on IADC report. Failure to meet these conditions will necessitate corrective action by contractor and retesting all at contractor's expense.
8. The accumulator must be located at least 50 feet from the well. Blowout preventer controls must be properly labeled and located as close to drillers position as feasible. Floor control valves are (required)(not required).
9. Fluid lines from accumulator to BOP's and all remote control fluid lines shall be steel, and rated at or above maximum accumulator pressure. Lines shall be routed in bundles and adequately protected from damage.
10. Use rams in following positions:

	Drilling	Running Casing
Upper ram	Drill pipe	Casing
Lower Ram	Blind	Blind

\*Amoco District Superintendent may reverse location of rams.

11. Extensions and hand wheels to be installed and braced at all times.



RECEIVED  
FEB - 7 1986  
O.C.O.  
HOBBY OFFICE