

UNITED STATES  
DEPARTMENT OF THE INTERIOR  
BUREAU OF LAND MANAGEMENT

APPLICATION FOR PERMIT TO DRILL, DEEPEN, OR PLUG BACK

1a. TYPE OF WORK

DRILL ☒

DEEPEN ☐

PLUG BACK ☐

b. TYPE OF WELL

OIL  
WELL ☒

GAS  
WELL ☐

OTHER

SINGLE  
ZONE ☒

MULTIPLE  
ZONE ☐

2. NAME OF OPERATOR

DALLAS McCASLAND

3. ADDRESS OF OPERATOR

P. O. BOX 206, EUNICE, NEW MEXICO 88231

4. LOCATION OF WELL (Report location clearly and in accordance with any State requirements.)\*

At surface

865' FNL AND 1650' FEL OF SECTION 4

At proposed prod. zone

14. DISTANCE IN MILES AND DIRECTION FROM NEAREST TOWN OR POST OFFICE\*

8 AIR MILES SOUTHEAST OF MALJAMAR, NEW MEXICO

15. DISTANCE FROM PROPOSED\*

LOCATION TO NEAREST  
PROPERTY OR LEASE LINE, FT.  
(Also to nearest drig. unit line, if any)

865'

16. NO. OF ACRES IN LEASE

961.44

17. NO. OF ACRES ASSIGNED  
TO THIS WELL

40

18. DISTANCE FROM PROPOSED LOCATION\*

TO NEAREST WELL, DRILLING, COMPLETED,  
OR APPLIED FOR, ON THIS LEASE, FT.

1100'

19. PROPOSED DEPTH

5000'

20. ROTARY OR CABLE TOOLS

ROTARY

21. ELEVATIONS (Show whether DF, RT, GR, etc.)

4027 GL

22. APPROX. DATE WORK WILL START\*

UPON APPROVAL

23.

PROPOSED CASING AND CEMENTING PROGRAM

SIZE OF HOLE	SIZE OF CASING	WEIGHT PER FOOT	SETTING DEPTH	QUANTITY OF CEMENT
12-1/4"	8-5/8"	24#	350'	SUFFICIENT TO CIRCULATE
7-7/8"	5-1/2"	14#	5000'	SUFFICIENT TO CIRCULATE

AFTER SETTING PRODUCTION CASING, PAY ZONE WILL BE PERFORATED AND  
STIMULATED AS NECESSARY.

SEE ATTACHED FOR: SUPPLEMENTAL DRILLING DATA  
BOP SKETCH  
SURFACE USE AND OPERATIONS PLAN  
OPERATOR-LANDOWNER AGREEMENT

IN ABOVE SPACE DESCRIBE PROPOSED PROGRAM: If proposal is to deepen or plug back, give data on present productive zone and proposed new productive zone. If proposal is to drill or deepen directionally, give pertinent data on subsurface locations and measured and true vertical depths. Give blowout preventer program, if any.

24.

SIGNED

Arthur R. Brown

TITLE

Agent

DATE

December 1, 1986

(This space for Federal or State office use)

PERMIT NO.

APPROVAL DATE

APPROVED BY

TITLE

DATE

12-12-86

CONDITIONS OF APPROVAL, IF ANY:

APPROVAL SUBJECT TO  
GENERAL REQUIREMENTS AND  
SPECIAL STIPULATIONS  
ATTACHED

\*See Instructions On Reverse Side

NEW MEXICO OIL CONSERVATION COMMISSION  
WELL LOCATION AND ACREAGE DEDICATION PLAT

Form C-102  
Supersedes C-128  
Effective 10-65

All distances must be from the outer boundaries of the Section

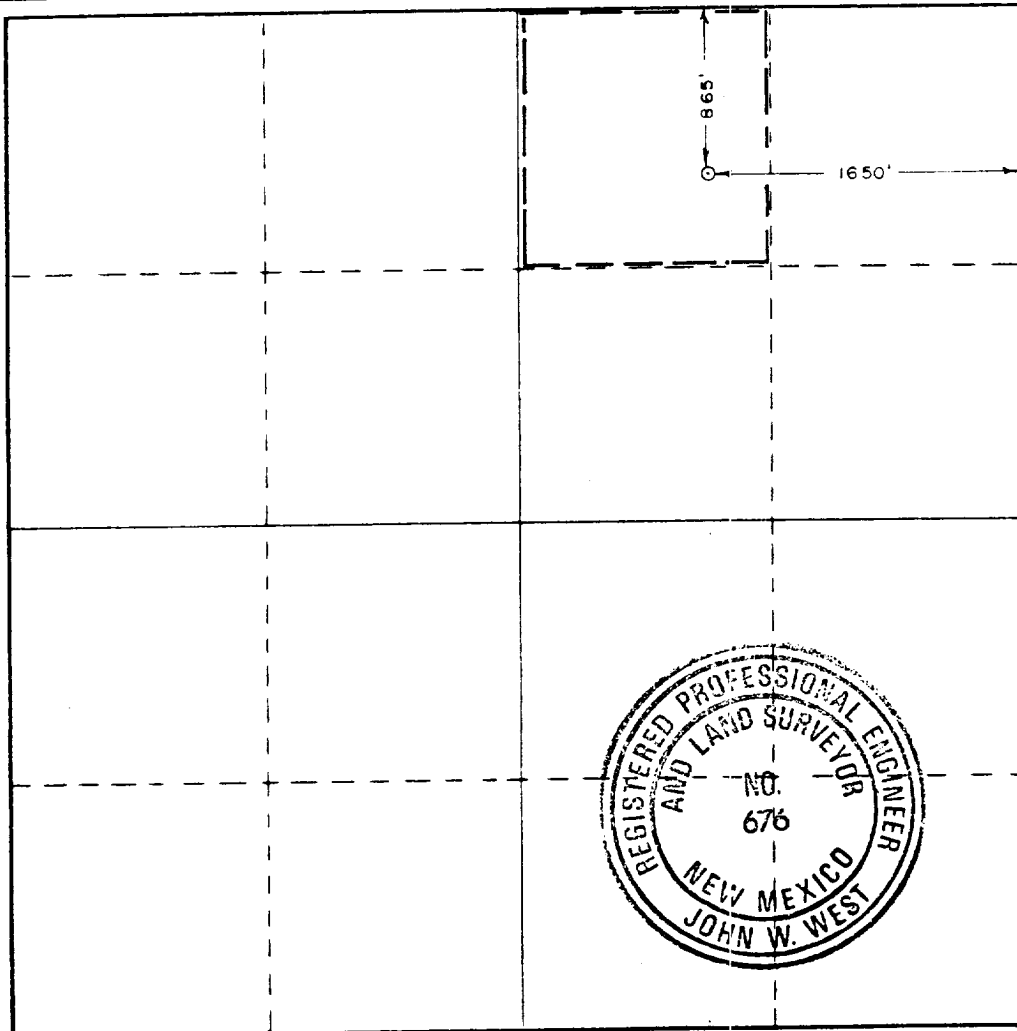
Operator <b>DALLAS McCASLAND</b>		Lease <b>Corbin "A"</b>		Well No. <b>5</b>
Tract Letter <b>P</b>	Section <b>4</b>	Township <b>13 South</b>	Range <b>33 East</b>	County <b>Lea</b>
Actual Footage Location of Well: <b>265</b> feet from the <b>north</b> line and <b>1650</b> feet from the <b>East</b> line				
Ground Level Elev. <b>4027.0</b>	Producing Formation <b>GRAYBURG-SAN ANDRES</b>	Pool <b>MALJAMAR GRAYBURG-SAN ANDRES</b>	Dedicated Acreage: <b>40</b> Acres	

- Outline the acreage dedicated to the subject well by colored pencil or hachure marks on the plat below.
- If more than one lease is dedicated to the well, outline each and identify the ownership thereof (both as to working interest and royalty).
- If more than one lease of different ownership is dedicated to the well, have the interests of all owners been consolidated by communitization, unitization, force-pooling, etc?

☐ Yes ☐ No If answer is "yes," type of consolidation \_\_\_\_\_

If answer is "no," list the owners and tract descriptions which have actually been consolidated. (Use reverse side of this form if necessary.) \_\_\_\_\_

No allowable will be assigned to the well until all interests have been consolidated (by communitization, unitization, forced-pooling, or otherwise) or until a non-standard unit, eliminating such interests, has been approved by the Commission.



CERTIFICATION

I hereby certify that the information contained herein is true and complete to the best of my knowledge and belief.

*Arthur R. Brown*  
Name  
**Arthur R. Brown**

Position  
**Agent**

Company  
**DALLAS McCASLAND**

Date  
**DECEMBER 1, 1986**

I hereby certify that the well location shown on this plat was plotted from field notes of actual surveys made by me or under my supervision, and that the same is true and correct to the best of my knowledge and belief.

**Nov. 20, 1986**

Date Surveyed

Registered Professional Engineer and/or Land Surveyor

*John W. West*  
Certificate No. **JOHN W. WEST, 676**

**RONALD J. EIDSON, 3239**

RECEIVED

DEC 15 1986

PCD  
HARRIS OFFICE

## SUPPLEMENTAL DRILLING DATA

DALLAS McCASLAND  
WELL NO.5 CORBIN "A"

1. SURFACE FORMATION: Quaternary.

2. ESTIMATED TOPS OF GEOLOGIC MARKERS:

Rustler Anhydrite	1495'
Top Salt	1600'
Base Salt	2770'
Yates	2980'
Seven Rivers	3400'
Queen	4150'
Grayburg	4550'

3. ANTICIPATED POSSIBLE HYDROCARBON BEARING ZONES:

Queen	Oil
Grayburg	Oil

4. PROPOSED CASING AND CEMENTING PROGRAM:

CASING SIZE	SETTING DEPTH		WEIGHT	GRADE	JOINT
	FROM	TO			
8-5/8"	0	350'	24#	K-55	STC
5-1/2"	0	5000'	14#	K-55	STC

8-5/8" casing will be cemented with approximately 250 sacks of Class "C" cement. Cement to circulate.

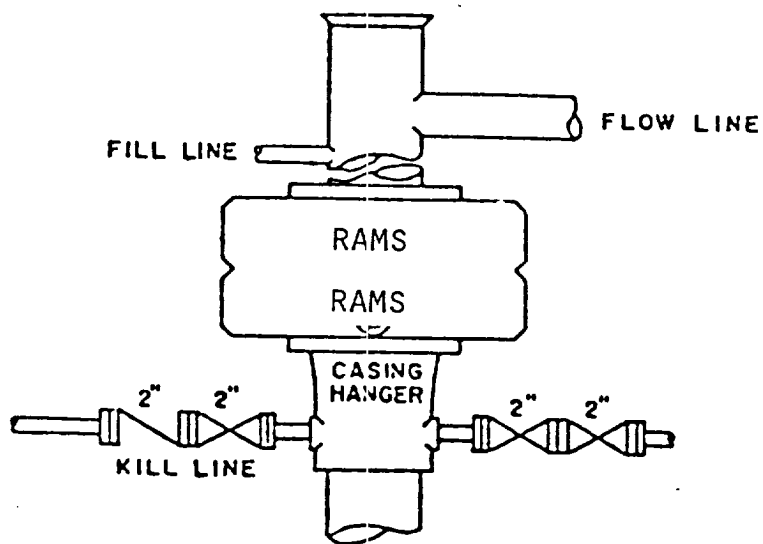
5-1/2" casing will be cemented with sufficient Light cement, tailed-in with 200 sacks of Class "C" cement, to circulate.

Equivalent or adequate grades and weights of casing may be substituted at time casing is run, depending on availability.

5. PRESSURE CONTROL EQUIPMENT:

A 3000 psi working pressure, double ram type preventer will be in use while drilling below the surface casing.

A BOP sketch is attached.



BOP STACK

3000 PSI WORKING PRESSURE

BOP ARRANGEMENT