

**MEXICO OIL CONSERVATION COMMISSION**  
**WELL LOCATION AND ACREAGE DEDICATION PLAT**

Form C-102  
 Supersedes C-128  
 Effective 1-1-85

All distances must be from the outer boundaries of the Section

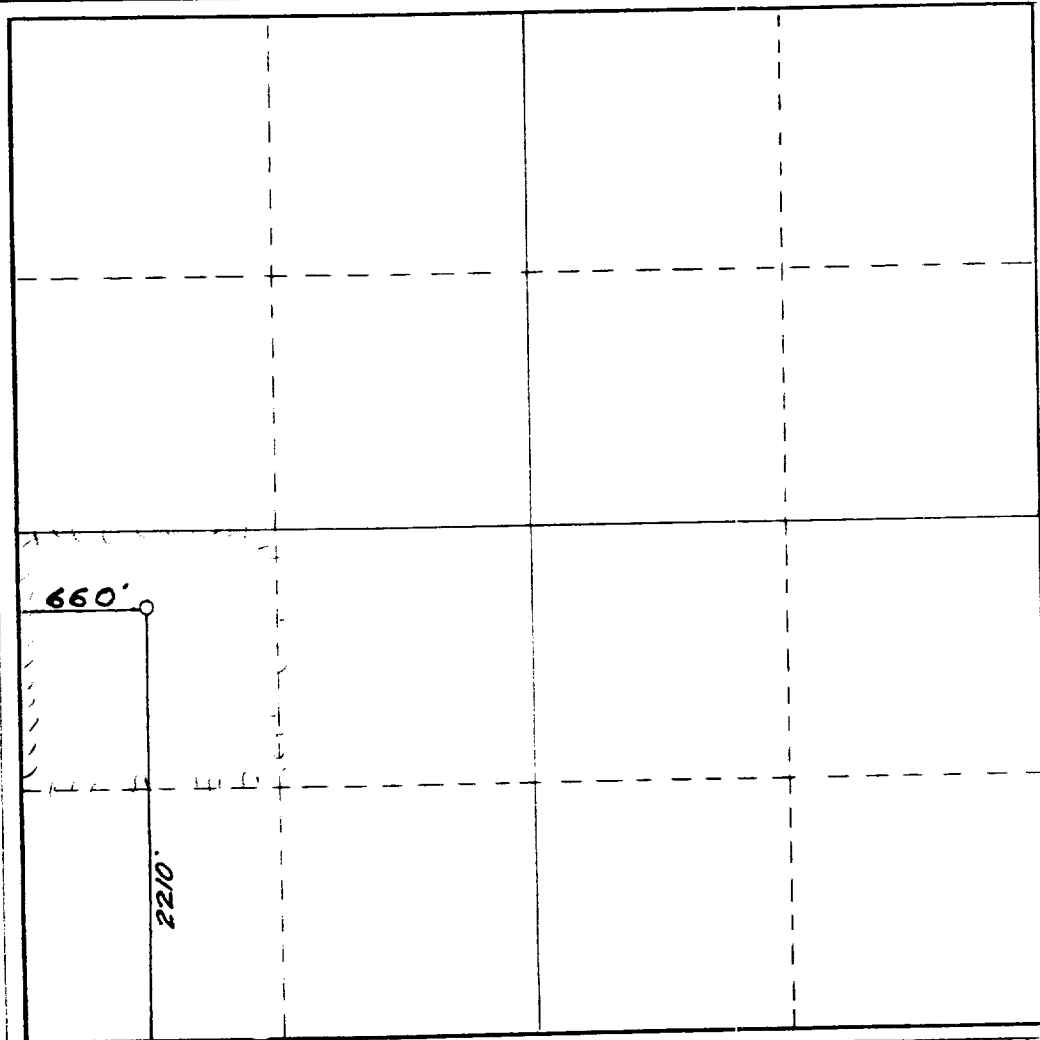
Operator <b>SIETE OIL &amp; GAS CORPORATION</b>			Lease <b>Conoco Federal</b>		Well No. <b>4</b>
Map Letter <b>L</b>	Section <b>19</b>	Township <b>18 South</b>	Range <b>32 East</b>	County <b>Lea County, N.M.</b>	
Actual Entrance Location of Well: <b>2210</b> feet from the <b>South</b> line and <b>660</b> feet from the <b>West</b> line					
Ground Level Elev. <b>3715.</b>	Producing Formation <b>Y-SR-Qu-GB</b>		Pool <b>Shugart</b>	Dedicated Acreage <b>40</b>	

1. Outline the acreage dedicated to the subject well by colored pencil or hatchure marks on the plat below.
2. If more than one lease is dedicated to the well, outline each and identify the ownership thereof (both as to working interest and royalty).
3. If more than one lease of different ownership is dedicated to the well, have the interests of all owners been consolidated by communitization, unitization, force-pooling, etc?

☐ Yes    ☐ No    If answer is "yes," type of consolidation \_\_\_\_\_

If answer is "no," list the owners and tract descriptions which have actually been consolidated. (Use reverse side of this form if necessary.) \_\_\_\_\_

No allowable will be assigned to the well until all interests have been consolidated (by communitization, unitization, forced-pooling, or otherwise) or until a non-standard unit, eliminating such interests, has been approved by the Commission.

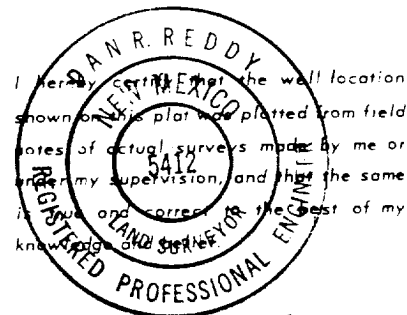


**CERTIFICATION**

I hereby certify that the information contained herein is true and complete to the best of my knowledge and belief.

Name: *Charles D. Gustin*  
 Position: **V.P. Drilling and Production**  
 Company: **Siete Oil and Gas Corp.**

Date: **1/19/88**



Date Surveyed: **January 14, 1988**

Registered Professional Engineer and/or Land Surveyor

*Dan R. Reddy*

Certificate No. **NM PE&LS NO. 5412**

0 330 660 990 1320 1650 1980 2310 2640 2000 1500 1000 500 0

RECEIVED

FEB 22 1988

1000  
FEB 22 1988