

NO. OF COPIES RECEIVED	
DISTRIBUTION	
SANTA FE	
FILE	
U.S.G.S.	
LAND OFFICE	
OPERATOR	

APPLICATION FOR PERMIT TO DRILL, DEEPEN, OR PLUG BACK

5A. Indicate Type of Lease  
STATE ☒ FEE ☐

5. State Oil & Gas Lease No.  
**E-3510**

7. Unit Agreement Name  
**Anderson Ranch**

8. Farm or Lease Name  
**Anderson Ranch Unit**

9. Well No.  
**21**

10. Field and Pool, or Wildcat  
**Anderson Ranch / Wildcat  
Devonian / Ellenburger**

12. County  
**Lea**

1a. Type of Work  
DRILL ☒ DEEPEN ☐ PLUG BACK ☐

b. Type of Well  
OIL WELL ☒ GAS WELL ☐ OTHER ☐

2. Name of Operator  
**Conoco Inc.**

3. Address of Operator  
**PO Box 460, Hobbs, NM 88240**

4. Location of Well  
UNIT LETTER **T** LOCATED **1700** FEET FROM THE **South** LINE  
AND **850** FEET FROM THE **West** LINE OF SEC. **1** TWP. **16S** RGE. **32E** NMPM

11. Elevations (show whether DH, RT, etc.)  
**4293.9' GL**

19. Proposed Depth  
**15150'**

19A. Formation  
**Devonian / Ellenburger**

20. Rotary or C.T.  
**Rotary**

21A. Kind & Status Plug. Bond  
**Blanket**

21B. Drilling Contractor  
**Not Available**

22. Approx. Date Work will start  
**12/15/88**

PROPOSED CASING AND CEMENT PROGRAM

SIZE OF HOLE	SIZE OF CASING	WEIGHT PER FOOT	SETTING DEPTH	SACKS OF CEMENT	EST. TOP
17 1/2"	13 3/8"	54.5 #	1300'	685 SXS	Circ
12 1/4"	9 5/8"	36 # + 40 #	4200'	1360 SXS	Circ
8 3/4"	7"	26 # + 29 #	13800'	1850 SXS	Circ
	5" liner		15150'	190 SXS	To top of liner

It is proposed to drill a straight hole to a TD of 15150' and complete, if productive, as a Devonian / Ellenburger dual oil well.

IN ABOVE SPACE, DESCRIBE PROPOSED PROGRAM; IF PROPOSAL IS TO DEEPEN OR PLUG BACK, GIVE DATA ON PRESENT PRODUCTIVE ZONE AND PROPOSED NEW PRODUCTIVE ZONE. GIVE BLOWOUT PREVENTER PROGRAM, IF ANY.

I hereby certify that the information above is true and complete to the best of my knowledge and belief.

Signed D.F. Finney Title Adm. Supervisor Date 11/14/88

(This space for State Use)  
**ORIGINAL SIGNED BY JERRY SEXTON**  
**DISTRICT I SUPERVISOR**

APPROVED BY \_\_\_\_\_ TITLE \_\_\_\_\_  
CONDITIONS OF APPROVAL, IF ANY:

**NOV 16 1988**

MEXICO OIL CONSERVATION COMMISSION  
WELL LOCATION AND ACREAGE DEDICATION PLAT

Form C-102  
Supersedes C-128  
Effective 1-1-65

All distances must be from the outer boundaries of the Section

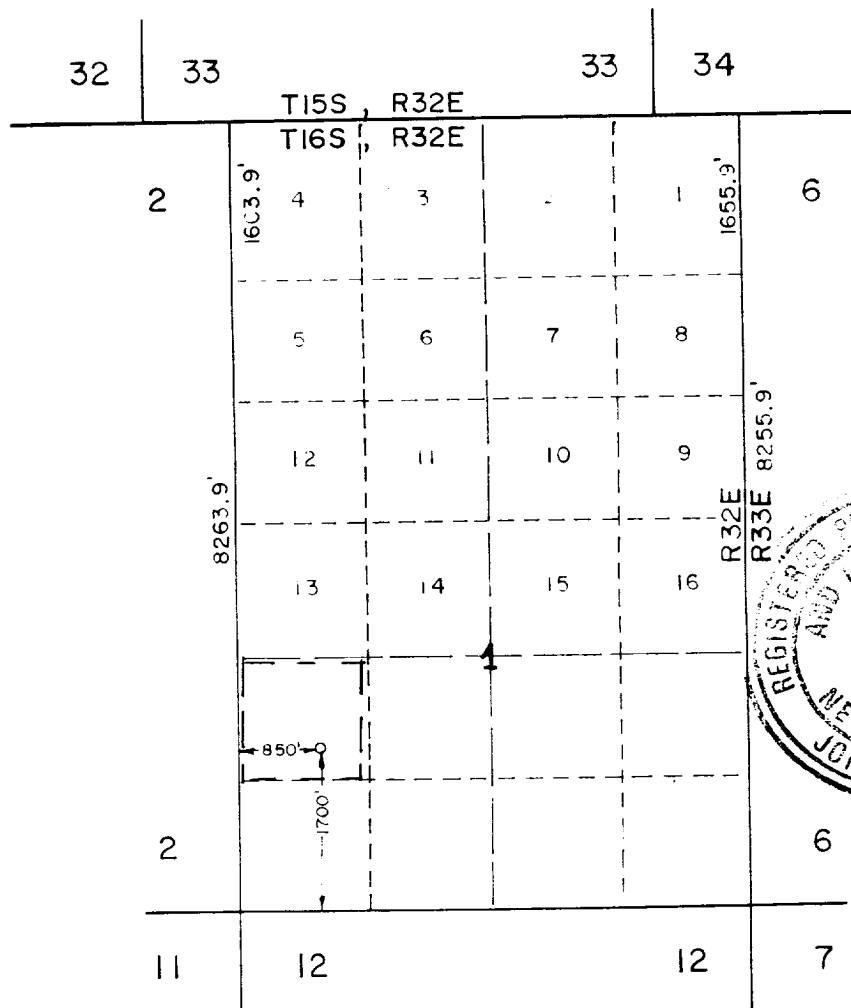
Operator <b>Conoco, Inc.</b>			Lease <b>Anderson Ranch Unit</b>		Well No. <b>21</b>
Unit Letter <b>T</b>	Section <b>1</b>	Township <b>16 South</b>	Range <b>32 East</b>	County <b>Lea</b>	
Actual Footage Location of Well: <div style="display: flex; justify-content: space-between;"> <span>1700 feet from the South line and</span> <span>850 feet from the West line</span> </div>					
Ground Level Elev. <b>4293.9</b>	Producing Formation <b>Devonian / Ellenburger</b>		Pool <b>Anderson Ranch / Wildcat Devonian / Ellenburger</b>	Dedicated Acreage: <b>40</b> Acres	

- Outline the acreage dedicated to the subject well by colored pencil or hatchure marks on the plat below.
- If more than one lease is dedicated to the well, outline each and identify the ownership thereof (both as to working interest and royalty).
- If more than one lease of different ownership is dedicated to the well, have the interests of all owners been consolidated by communitization, unitization, force-pooling, etc?

☐ Yes   ☐ No   If answer is "yes," type of consolidation \_\_\_\_\_

If answer is "no," list the owners and tract descriptions which have actually been consolidated. (Use reverse side of this form if necessary.) \_\_\_\_\_

No allowable will be assigned to the well until all interests have been consolidated (by communitization, unitization, forced-pooling, or otherwise) or until a non-standard unit, eliminating such interests, has been approved by the Commission.



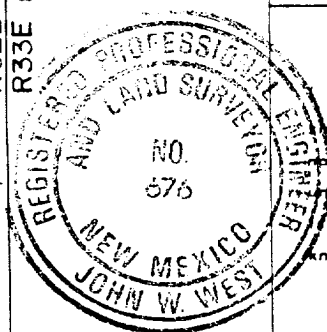
SCALE : 1" = 4000'

CERTIFICATION

I hereby certify that the information contained herein is true and complete to the best of my knowledge and belief.

Name: *D.F. Finney*  
 Position: Administrative Supervisor  
 Company: Conoco Inc.

Date: 11/14/88



I hereby certify that the well location shown on this plat was plotted from field notes of actual surveys made by me or under my supervision, and that the same are true and correct to the best of my knowledge and belief.

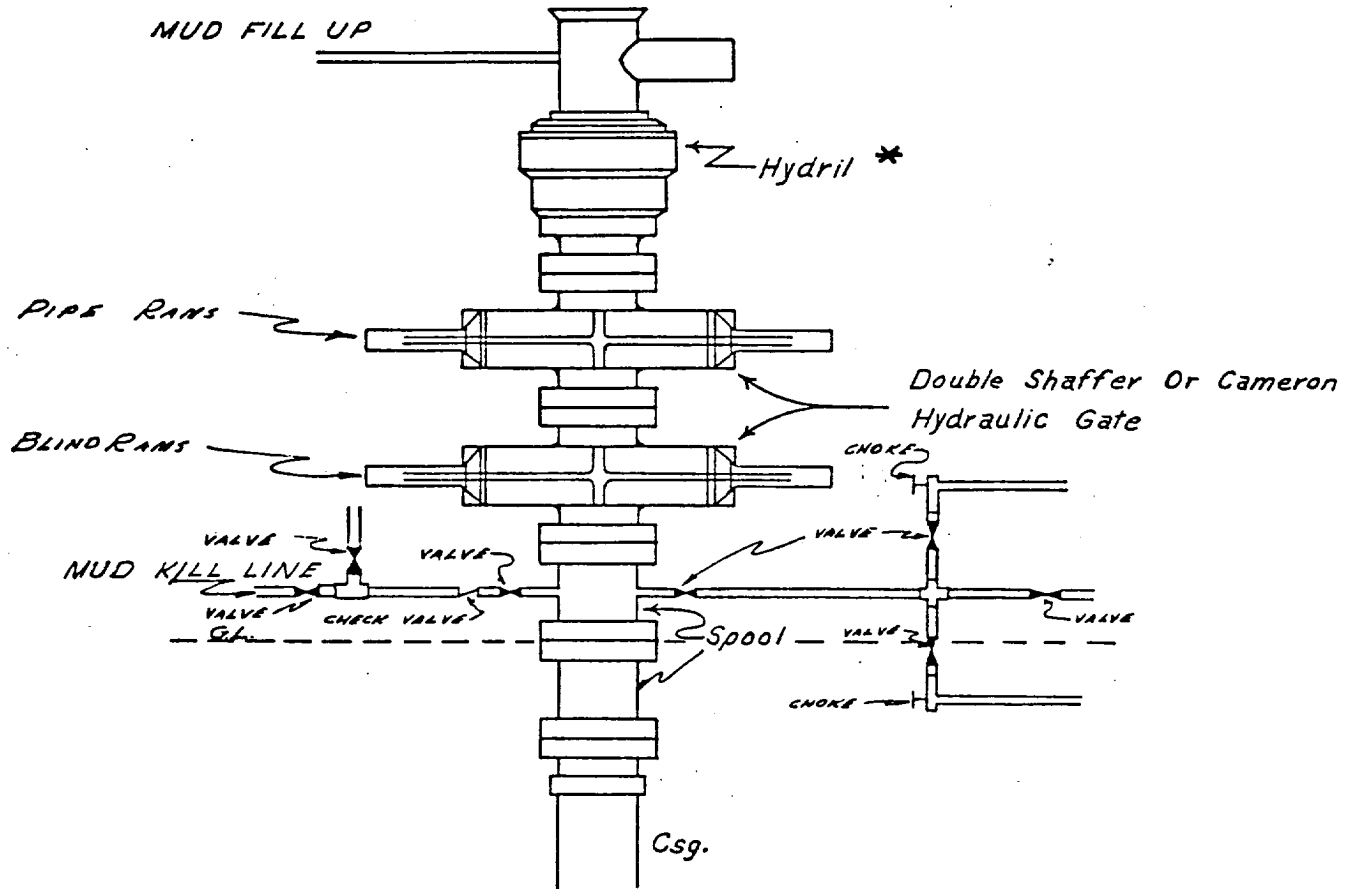
Date Surveyed: November 7, 1988

Registered Professional Engineer and/or Land Surveyor

*John W. West*  
 Certificate No. JOHN W. WEST **676**  
Ronald J. Eidson **3239**

# CONOCO INC.

## Blow-out Preventer Specifications



### NOTE:

Manual and Hydraulic controls with closing unit no less than 75' from well head.  
Remote controls on rig floor.

\* \*

DUE TO SUBSTRUCTURE CLEARANCE, HYDRIL

MAY OR MAY NOT BE USED.