

UNITED STATES  
DEPARTMENT OF THE INTERIOR  
GEOLOGICAL SURVEY

## APPLICATION FOR PERMIT TO DRILL, DEEPEN, OR PLUG BACK

## 1a. TYPE OF WORK

DRILL ☒DEEPEN ☐PLUG BACK ☐

## b. TYPE OF WELL

OIL  
WELL ☒GAS  
WELL ☐OTHER ☐SINGLE  
ZONE ☐MULTIPLE  
ZONE ☐

## 2. NAME OF OPERATOR

Sun Exploration &amp; Production Company

## 3. ADDRESS OF OPERATOR

P.O. Box 1861, Midland, TX 79702

## 4. LOCATION OF WELL (Report location clearly and in accordance with any State requirements.\*)

At surface

E, 1650' FNL &amp; 330' FWL

At proposed prod. zone

## 14. DISTANCE IN MILES AND DIRECTION FROM NEAREST TOWN OR POST OFFICE\*

46.4 miles west from Hobbs

## 15. DISTANCE FROM PROPOSED\*

LOCATION TO NEAREST  
PROPERTY OR LEASE LINE, FT.  
(Also to nearest drlg. unit line, if any)

## 16. NO. OF ACRES IN LEASE

160

18. DISTANCE FROM PROPOSED LOCATION\*  
TO NEAREST WELL, DRILLING, COMPLETED,  
OR APPLIED FOR, ON THIS LEASE, FT.

## 19. PROPOSED DEPTH

3250'

17. NO. OF ACRES ASSIGNED  
TO THIS WELL

40

## 20. ROTARY OR CABLE TOOLS

Rotary

## 21. ELEVATIONS (Show whether DF, RT, GR, etc.)

3626.5 GR

## 22. APPROX. DATE WORK WILL START\*

ASAP

## 23.

## PROPOSED CASING AND CEMENTING PROGRAM

SIZE OF HOLE	SIZE OF CASING	WEIGHT PER FOOT	SETTING DEPTH	QUANTITY OF CEMENT
12" or 11"	8 5/8"	24#	400'	375 sxs <b>CIRCULATE</b>
7 7/8"	5 1/2"	14#	3050'	500 sxs <b>CIRCULATE</b>
	2 3/8" tbg	4.7#	3050'	

Rustler 1040  
Salt 1300  
Base of salt 1400  
Anhydrite 1400-2570  
Yates 2780  
Yates Pay 2935-2965

IN ABOVE SPACE DESCRIBE PROPOSED PROGRAM: If proposal is to deepen or plug back, give data on present productive zone and proposed new productive zone. If proposal is to drill or deepen directionally, give pertinent data on subsurface locations and measured and true vertical depths. Give blowout preventer program, if any.

## 24.

SIGNED

*Alva Franco*

TITLE Accounting Associate

DATE 1-25-88

(This space for Federal or State office use)

PERMIT NO.

APPROVAL DATE

APPROVED BY

TITLE

DATE 2-29-88

CONDITIONS OF APPROVAL, IF ANY:

RECEIVED

## OIL CONSERVATION DIVISION

STATE OF NEW MEXICO  
ENERGY AND MINERALS DEPARTMENTP. O. BOX 2088  
SANTA FE, NEW MEXICO 87501Form C-102  
Revised 10-1-78

All distances must be from the outer boundaries of the Section.

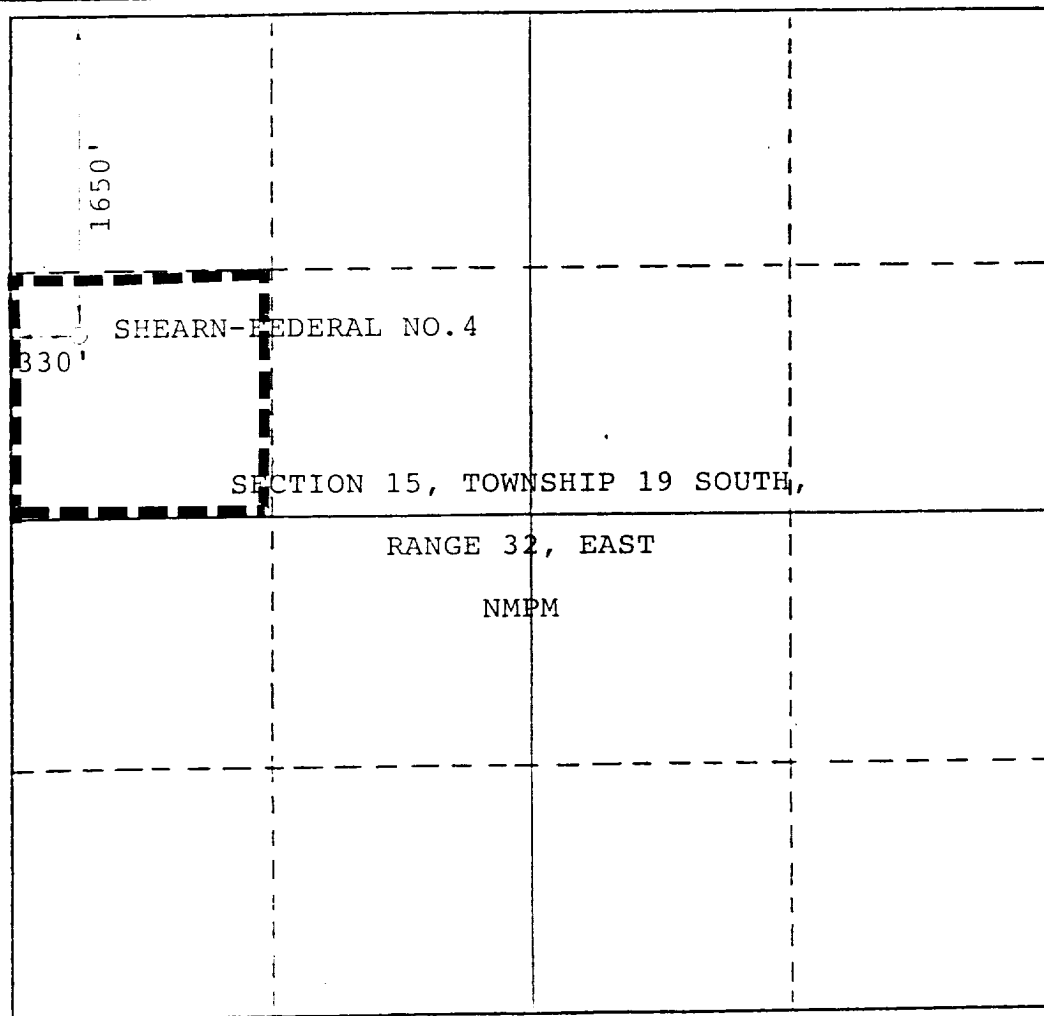
Operator SUN EXPLORATION & PRODUCTION CO.			Lease SHEARN-FEDERAL		Well No. 4
Unit Letter E	Section 15	Township 19 SOUTH	Range 32 EAST	County LEA	
Actual Footage Location of Well: 1650 feet from the NORTH line and 330 feet from the WEST line					
Ground Level Elev. 3626.5	Producing Formation Yates		Pool Lusk Yates, Northeast		Dedicated Acreage: 40 Acres

1. Outline the acreage dedicated to the subject well by colored pencil or hachure marks on the plat below.
2. If more than one lease is dedicated to the well, outline each and identify the ownership thereof (both as to working interest and royalty).
3. If more than one lease of different ownership is dedicated to the well, have the interests of all owners been consolidated by communitization, unitization, force-pooling, etc?

☐ Yes ☐ No If answer is "yes," type of consolidation \_\_\_\_\_

If answer is "no," list the owners and tract descriptions which have actually been consolidated. (Use reverse side of this form if necessary.) \_\_\_\_\_

No allowable will be assigned to the well until all interests have been consolidated (by communitization, unitization, forced-pooling, or otherwise) or until a non-standard unit, eliminating such interests, has been approved by the Division.



## CERTIFICATION

I hereby certify that the information contained herein is true and complete to the best of my knowledge and belief.

Name

Alva Franco

Position

Accounting Associate

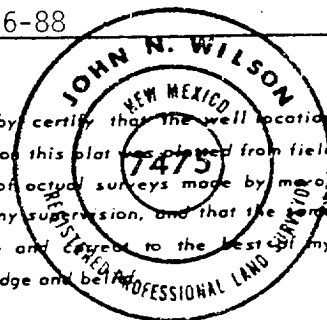
Company

Sun Expl. &amp; Prod. Co.

Date

1-26-88

I hereby certify that the well location shown on this plat was plotted from field notes of actual surveys made by me or under my supervision, and that the same is true and correct to the best of my knowledge and belief.



Date Surveyed

JANUARY 8, 1988

Registered Professional Engineer  
and/or Land Surveyor

Certificate No.

7475

RECEIVED

MAR 3 - 1988

OCD  
HOBBS OFFICE

TEN POINT DRILLING PLAN FOR THE  
SHEARN FEDERAL #4  
IN COMPLIANCE WITH ORDER #1

SUN EXPLORATION AND PRODUCTION COMPANY  
SHEARN FEDERAL #4  
SEC. 15, T-19-S, R-32-E  
1650' FNL, 330' FWL  
LEA COUNTY, NEW MEXICO

1. GEOLOGIC SURFACE FORMATION:  
Quaternary

2. ESTIMATED TOPS OF IMPORTANT GEOLOGIC MARKERS:

Rustler	1040'
Salt	1300'
Base of Salt	1400'
Anhydrite	1400-2570'
Yates	2780'
Yates Pay	2935-2965' *

\*Oil or gas is indicated with an asterick (\*)

3. PROPOSED CASING PROGRAM:

<u>SIZE</u>	<u>CSG SEAT</u>	<u>FOOTAGE</u>	<u>GRADE</u>	<u>WT &amp; THREAD</u>
8-5/8"	400'	400'	K-55	24# STC
5-1/2"	3050'	3050'	J-55	14# STC
2-3/8"	NA	3050'	J-55	4.7# 8RD EUE

4. PROPOSED CEMENTING PROGRAM:

8-5/8": Cemented to surface w/ 375 sx Class "C" w/ 2% CaCl<sub>2</sub>  
+ 1/4#/sx Flocele.

5-1/2": Cemented to surface w/ 400 sx Lite "C" w/ 2% Thrifty Mix  
+ 10% Salt + 5#/sx Gilsonite, tailed w/ 100 sx Class "C"  
w/ 10#/sx Salt.

Cement volumes to be adjusted as necessary.

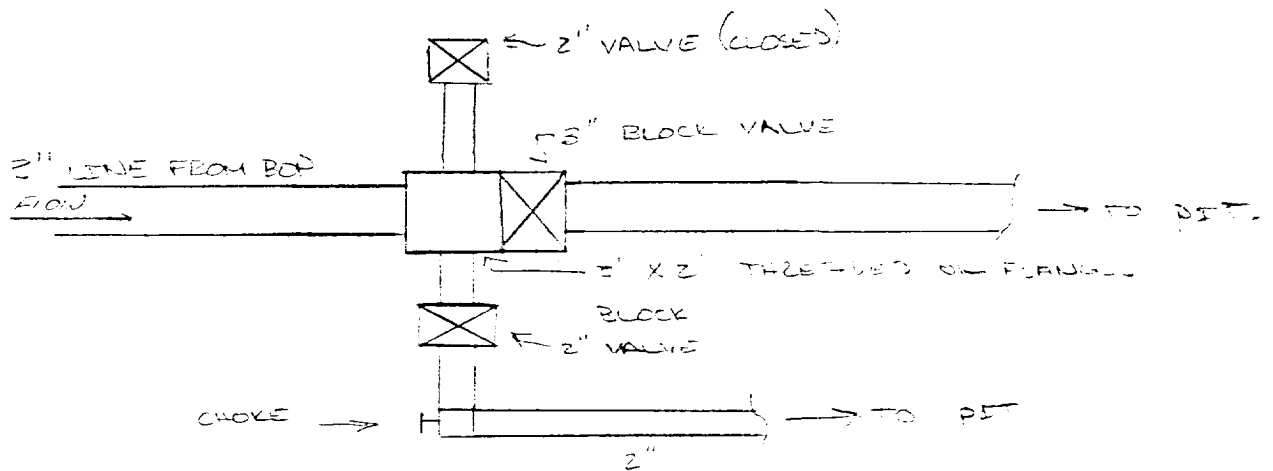
5. BOP & AUXILLARY EQUIPMENT:

BOP & choke manifold equipment will be set-up as shown on Exhibits #D-1 & D-1A.  
Any change will only be upgrades.

Accumulator volume will be sufficient to provide repeated open and closing of  
preventers.

A "TIW" or inside BOP will be kept on the rig floor at all times during the  
drilling operations. Connections on safety valve will be adaptable for both  
drill collars and drillpipe.

MANIFOLD FOR 3000 PSI OR LESS



3000 PSI WP

RECEIVED  
MAR 3 - 1988  
HOBBS OFFICE

