

N MEXICO OIL CONSERVATION COMMISSION
WELL LOCATION AND ACREAGE DEDICATION PLAT

Form C-102
Supersedes C-128
Effective 1-1-65

All distances must be from the outer boundaries of the Section.

Corrected

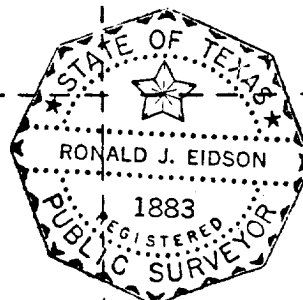
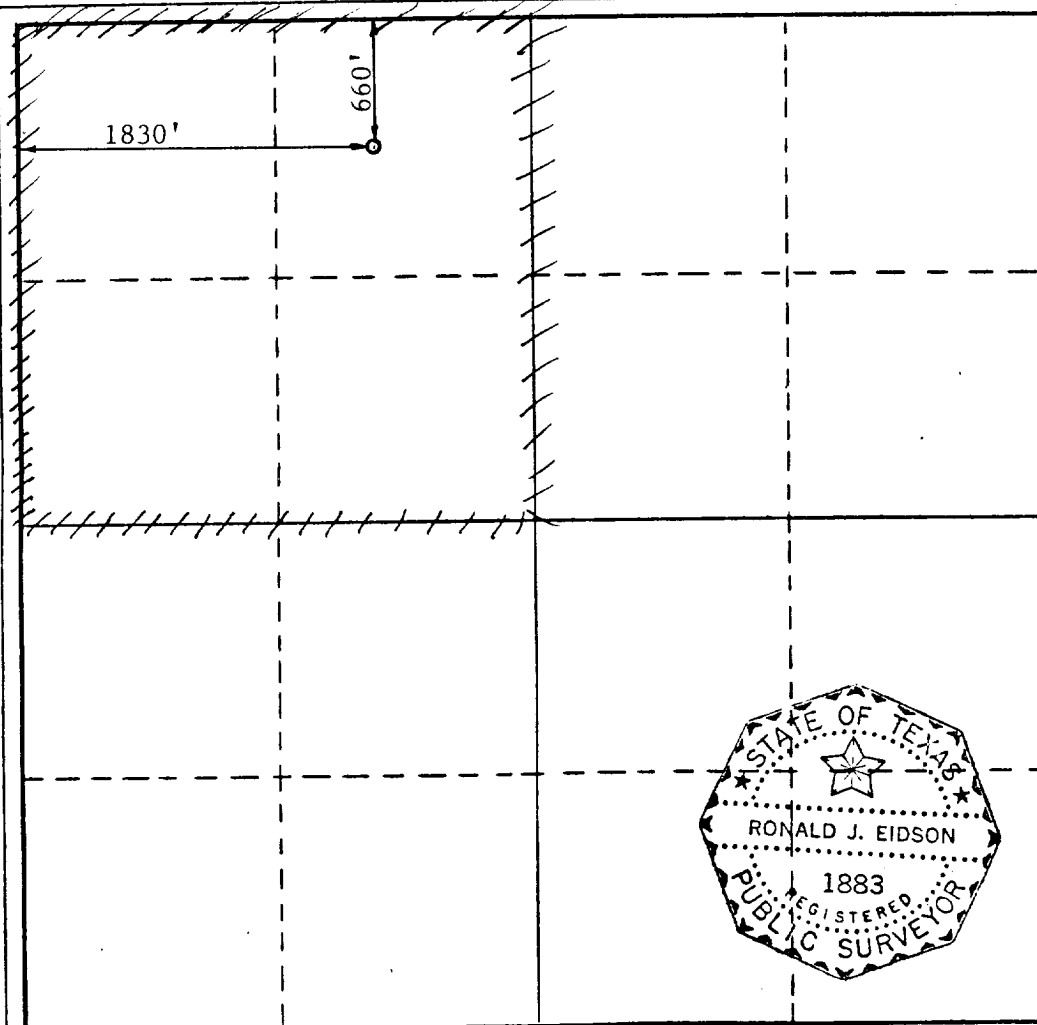
Operator SANTA FE ENERGY OPERATING PARTNERS LP			Lease N.H. 5A-STATE		Well No. 2
Unit Letter C	Section 5	Township 16-SOUTH	Range 34-EAST	County LEA	
Actual Footage Location of Well: 660 feet from the NORTH line and 1830 feet from the WEST line					
Ground Level Elev. 4152.7'	Producing Formation Wolfcamp		Pool North Hume Wolfcamp	Dedicated Acreage: 170.71 Acres	

1. Outline the acreage dedicated to the subject well by colored pencil or hachure marks on the plat below.
2. If more than one lease is dedicated to the well, outline each and identify the ownership thereof (both as to working interest and royalty).
3. If more than one lease of different ownership is dedicated to the well, have the interests of all owners been consolidated by communitization, unitization, force-pooling, etc?

☐ Yes ☒ No If answer is "yes," type of consolidation _____

If answer is "no," list the owners and tract descriptions which have actually been consolidated. (Use reverse side of this form if necessary.) See reverse side

No allowable will be assigned to the well until all interests have been consolidated (by communitization, unitization, forced-pooling, or otherwise) or until a non-standard unit, eliminating such interests, has been approved by the Commission.



CERTIFICATION

I hereby certify that the information contained herein is true and complete to the best of my knowledge and belief.

Thomas E. Gentry / *by A. 7600*

Name
Thomas E. Gentry
Position
District Operations Manager
Company
Santa Fe Energy Operated Partners, L.P.
Date
8-5-88

I hereby certify that the well location shown on this plat was plotted from field notes of actual surveys made by me or under my supervision, and that the same is true and correct to the best of my knowledge and belief.

Date Surveyed
8-4-88
Registered Professional Engineer and/or Land Surveyor

Ronald J. Eidson
Certificate No. JOHN W. WEST, 676
RONALD J. EIDSON, 3239

State of New Mexico Lease No. LG-5661

Santa Fe Energy Operated Partners, LP et al - 100% WI
State of New Mexico - 12.5% Royalty

100-3-1033
U.S. MARSHAL SERVICE
FEDERAL BUREAU OF INVESTIGATION