

Submit to Appropriate
District Office
State Lease -- 6 copies
Fee Lease -- 5 copies

State of New Mexico
Energy, Minerals and Natural Resources Department

Form C-101
Revised 1-1-89

OIL CONSERVATION DIVISION
P.O. Box 2088
Santa Fe, New Mexico 87504-2088

DISTRICT I
P.O. Box 1980, Hobbs, NM 88240

DISTRICT II
P.O. Drawer DD, Artesia, NM 88210

DISTRICT III
1000 Rio Brazos Rd., Aztec, NM 87410

API NO. (assigned by OCD on New Wells)

30-025-31280

5. Indicate Type of Lease

STATE ☐

FEE ☒

6. State Oil & Gas Lease No.

APPLICATION FOR PERMIT TO DRILL, DEEPEN, OR PLUG BACK

1a. Type of Work:

DRILL ☒

RE-ENTER ☐

DEEPEN ☐

PLUG BACK ☐

b. Type of Well:

OIL
WELL ☐

GAS
WELL ☒

OTHER

SINGLE
ZONE ☒

MULTIPLE
ZONE ☐

7. Lease Name or Unit Agreement Name

Carter-Eaves "NCT-A"

2. Name of Operator

Doyle Hartman

8. Well No.

3

3. Address of Operator

P. O. Box 10426, Midland, Texas 79702

9. Pool name or Wildcat

Jalmat (T-Y-7R) Pro Gas

4. Well Location

Unit Letter N : 512 Feet From The South Line and 1923 Feet From The West Line

Section 6 Township 24-S Range 37-E NMPM Lea County

10. Proposed Depth
3600'

11. Formation
Tansill-Yates-7R

12. Rotary or C.T.
Rotary

13. Elevations (Show whether DF, RT, GR, etc.)
3347' RKB (3331.5 GR)

14. Kind & Status Plug. Bond
Blanket

15. Drilling Contractor
Cactus

16. Approx. Date Work will start
July 8, 1991

17.

PROPOSED CASING AND CEMENT PROGRAM

SIZE OF HOLE	SIZE OF CASING	WEIGHT PER FOOT	SETTING DEPTH	SACKS OF CEMENT	EST. TOP
12-1/4"	9-5/8"	36	450	350 sx	Surface
8-3/4"	7"	23	3575	700 sx	Surface

Before drilling out from under surface pipe, the well will be equipped with a 3000 psi 10" Series 900 double ram hydraulic BOP and Hydril surface pipe and rams will be tested to minimum 1500 psig. Cement volumes may be adjusted to insure that the cement behind both the 9-5/8" and 7" casing will be brought to surface.

IN ABOVE SPACE DESCRIBE PROPOSED PROGRAM: IF PROPOSAL IS TO DEEPEN OR PLUG BACK, GIVE DATA ON PRESENT PRODUCTIVE ZONE AND PROPOSED NEW PRODUCTIVE ZONE. GIVE BLOWOUT PREVENTER PROGRAM, IF ANY.

I hereby certify that the information above is true and complete to the best of my knowledge and belief.

SIGNATURE: Patrick K. Worrell TITLE: Engineer DATE: 6-10-91

TYPE OR PRINT NAME: Patrick K. Worrell TELEPHONE NO.

(This space for State Use)

ORIGINAL SIGNED BY JERRY SEXTON
DISTRICT SUPERVISOR

APPROVED BY: DATE:

CONDITIONS OF APPROVAL, IF ANY:

30-025-31280

JUL 15 1991

Permit Expires 6 Months From Approval
Date Unless Drilling Underway.

RECEIVED

JUN 12 1991

CHAS
ROSSBART

Submit to Appropriate
District Office
State Lease - 4 copies
Fee Lease - 3 copies

State of New Mexico
Energy, Minerals and Natural Resources Department

Form C-102
Revised 1-1-89

OIL CONSERVATION DIVISION

P.O. Box 2088
Santa Fe, New Mexico 87504-2088

DISTRICT I
P.O. Box 1900, Hobbs, NM 88240

DISTRICT II
P.O. Drawer DD, Artesia, NM 88210

DISTRICT III
1000 Rio Arriba Rd., Aztec, NM 87410

WELL LOCATION AND ACREAGE DEDICATION PLAT

All Distances must be from the outer boundaries of the section

Operator DOYLE HARTMAN			Lease CARTER EAVES NCT-A		Well No. 3
Unit Letter N	Section 6	Township 24 SOUTH	Range 37 EAST	County LEA	
Actual Footage Location of Well: 512 feet from the SOUTH line and 1923 feet from the WEST line					
Ground level Elev. 3331.5	Producing Formation Yates-Seven Rivers	Pool Jalmat Gas		Dedicated Acreage: 179.160 Acres	

1. Outline the acreage dedicated to the subject well by colored pencil or leadmark marks on the plat below.

2. If more than one lease is dedicated to the well, outline each and identify the ownership thereof (both as to working interest and royalty).

3. If more than one lease of different ownership is dedicated to the well, have the interest of all owners been consolidated by communitization, unitization, force-pooling, etc.?

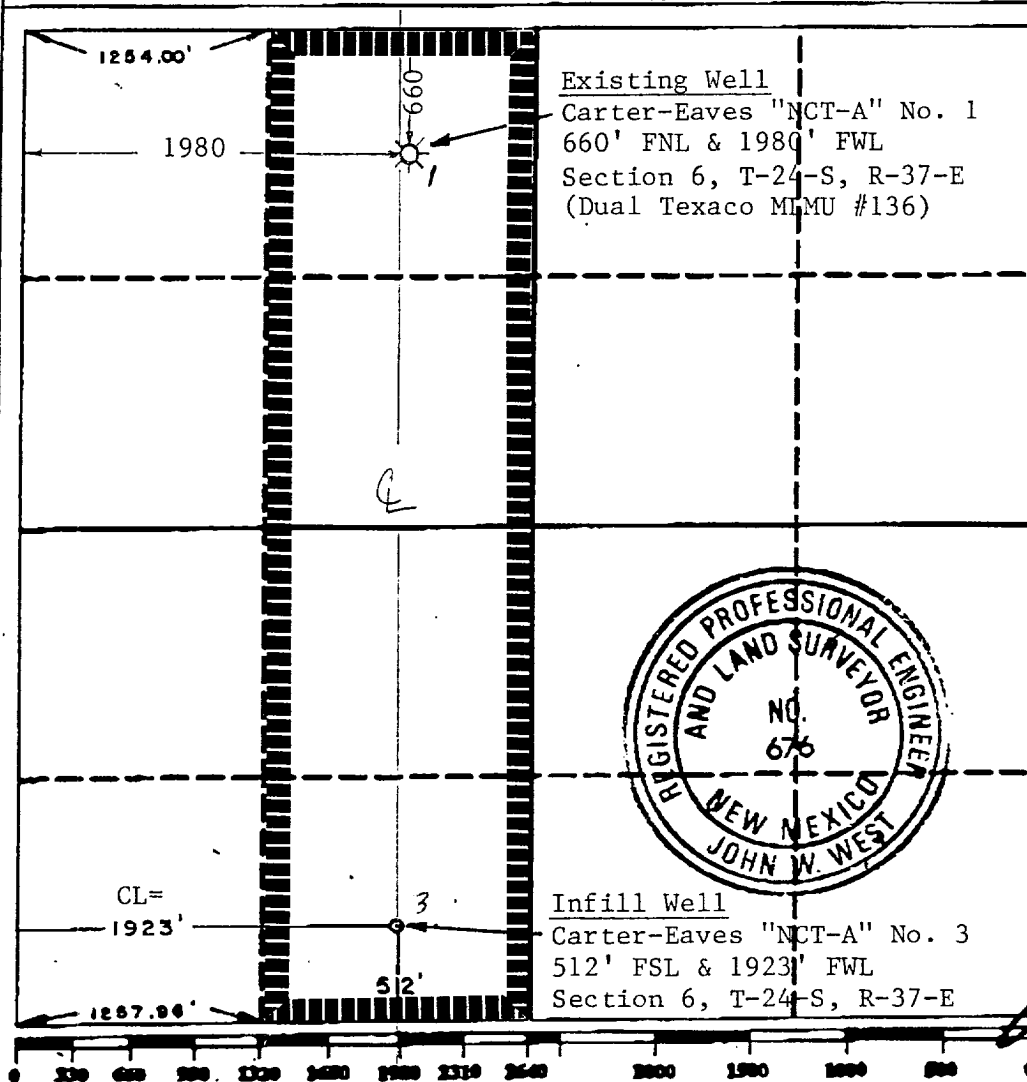
☐ Yes

☐ No

If answer is "yes" type of consolidation

If answer is "no" list the owners and tract descriptions which have actually been consolidated. (Use reverse side of this form if necessary.)

No allowable will be assigned to the well until all interests have been consolidated (by communitization, unitization, forced-pooling, or otherwise) or until a non-standard unit, eliminating such interest, has been approved by the Division.



OPERATOR CERTIFICATION

I hereby certify that the information contained herein is true and complete to the best of my knowledge and belief.

Signature

Patrick K. Worrell

Printed Name

Patrick K. Worrell

Position

Engineer

Company

Doyle Hartman

Date

June 10, 1991

SURVEYOR CERTIFICATION

I hereby certify that the well location shown on this plat was plotted from field notes of actual surveys made by me or under my supervision, and that the same is true and correct to the best of my knowledge and belief.

Date Surveyed

6-4-91

Signature & Seal of
Professional Surveyor

John W. West

RONALD J. EYBON, 3239