

UNITED STATES
DEPARTMENT OF THE INTERIOR
BUREAU OF LAND MANAGEMENT

88240

APPLICATION FOR PERMIT TO DRILL, DEEPEN, OR PLUG BACK

1a. TYPE OF WORK

DRILL ☒

DEEPEN ☐

PLUG BACK ☐

b. TYPE OF WELL

OIL
WELL ☒

GAS
WELL ☐

OTHER

SINGLE
ZONE ☒

MULTIPLE
ZONE ☐

2. NAME OF OPERATOR

Collins & Ware, Inc.

3. ADDRESS OF OPERATOR

600 W. Illinois, Suite 701 Midland, TX 79701

4. LOCATION OF WELL (Report location clearly and in accordance with any State requirements.)

At surface
1774' FWL & 660' FSL of Section 31
At proposed prod. zone

unit N

14. DISTANCE IN MILES AND DIRECTION FROM NEAREST TOWN OR POST OFFICE*

28 miles East of Carlsbad, NM

15. DISTANCE FROM PROPOSED*

LOCATION TO NEAREST
PROPERTY OR LEASE LINE, FT.
(Also to nearest drig. unit line, if any)

660'

16. NO. OF ACRES IN LEASE

40

18. DISTANCE FROM PROPOSED LOCATION*
TO NEAREST WELL, DRILLING, COMPLETED,
OR APPLIED FOR, ON THIS LEASE, FT.

1320'

19. PROPOSED DEPTH

8700'

21. ELEVATIONS (Show whether DF, RT, GR, etc.)

3613.5 GR

Carlsbad Controlled Water Basin

23.

PROPOSED CASING AND CEMENTING PROGRAM

SIZE OF HOLE	SIZE OF CASING	WEIGHT PER FOOT	SETTING DEPTH	QUANTITY OF CEMENT
17 1/2"	13 3/8"	48# - 61#	800'	Sufficient to Circulate
12 1/4"	8 5/8"	24# - 32#	4500'	Sufficient to Circulate
7 7/8"	5 1/2"	15.5# - 20#	8700'	Sufficient to tie with Intermediate

5. LEASE DESIGNATION AND SERIAL NO.

NM 86146

6. IF INDIAN, ALLOTTEE OR TRIBE NAME

7. UNIT AGREEMENT NAME

8. FARM OR LEASE NAME

E BW "31" Federal

9. WELL NO.

1

10. FIELD AND POOL, OR WILDCAT

Livingston Ridge Delaware

11. SEC., T., R., M., OR BLK.
AND SURVEY OR AREA

Section 31, T21S, R32E

12. COUNTY OR PARISH

Lea

13. STATE

NM

15. DISTANCE FROM PROPOSED*

LOCATION TO NEAREST
PROPERTY OR LEASE LINE, FT.
(Also to nearest drig. unit line, if any)

660'

16. NO. OF ACRES IN LEASE

40

18. DISTANCE FROM PROPOSED LOCATION*
TO NEAREST WELL, DRILLING, COMPLETED,
OR APPLIED FOR, ON THIS LEASE, FT.

1320'

19. PROPOSED DEPTH

8700'

21. ELEVATIONS (Show whether DF, RT, GR, etc.)

3613.5 GR

Carlsbad Controlled Water Basin

23.

PROPOSED CASING AND CEMENTING PROGRAM

SIZE OF HOLE	SIZE OF CASING	WEIGHT PER FOOT	SETTING DEPTH	QUANTITY OF CEMENT
17 1/2"	13 3/8"	48# - 61#	800'	Sufficient to Circulate
12 1/4"	8 5/8"	24# - 32#	4500'	Sufficient to Circulate
7 7/8"	5 1/2"	15.5# - 20#	8700'	Sufficient to tie with Intermediate

22. APPROX. DATE WORK WILL START*

Upon Approval

After setting production casing, drilling rig will be replaced with completion rig. Pay zone will be perforated and stimulated as necessary.

See attached for: Supplemental drilling data
BOP Sketch
Surface use and operations plan

APPROVAL SUBJECT TO
GENERAL REQUIREMENTS AND
SPECIAL STIPULATIONS
ATTACHED

IN ABOVE SPACE DESCRIBE PROPOSED PROGRAM: If proposal is to deepen or plug back, give data on present productive zone and proposed new productive zone. If proposal is to drill or deepen directionally, give pertinent data on subsurface locations and measured and true vertical depths. Give blowout preventer program, if any.

24.

SIGNED

G. Thane Akins

TITLE Agent

DATE

9/13/91

(This space for Federal or State office use)

PERMIT NO.

APPROVAL DATE

APPROVED BY

[Signature]

TITLE

Act f Area Mgr.

DATE

10-18-91

CONDITIONS OF APPROVAL, IF ANY:

*See Instructions On Reverse Side

RECEIVED
SEP 30 8 43 AM '91
OCEANOGRAPHIC
AREA

RECEIVED

OCT 21 1991

●●●

MOSES OFFICE

Submit to Appropriate
District Office
State Lease - 4 copies
Fee Lease - 3 copies

State of New Mexico
Energy, Minerals and Natural Resources Department

Form C-102
Revised 1-1-89

OIL CONSERVATION DIVISION

DISTRICT I
P.O. Box 1980, Hobbs, NM 88240

P.O. Box 2088
Santa Fe, New Mexico 87504-2088

DISTRICT II
P.O. Drawer DD, Artesia, NM 88210

DISTRICT III
1000 Rio Brazos Rd., Aztec, NM 87410

WELL LOCATION AND ACREAGE DEDICATION PLAT

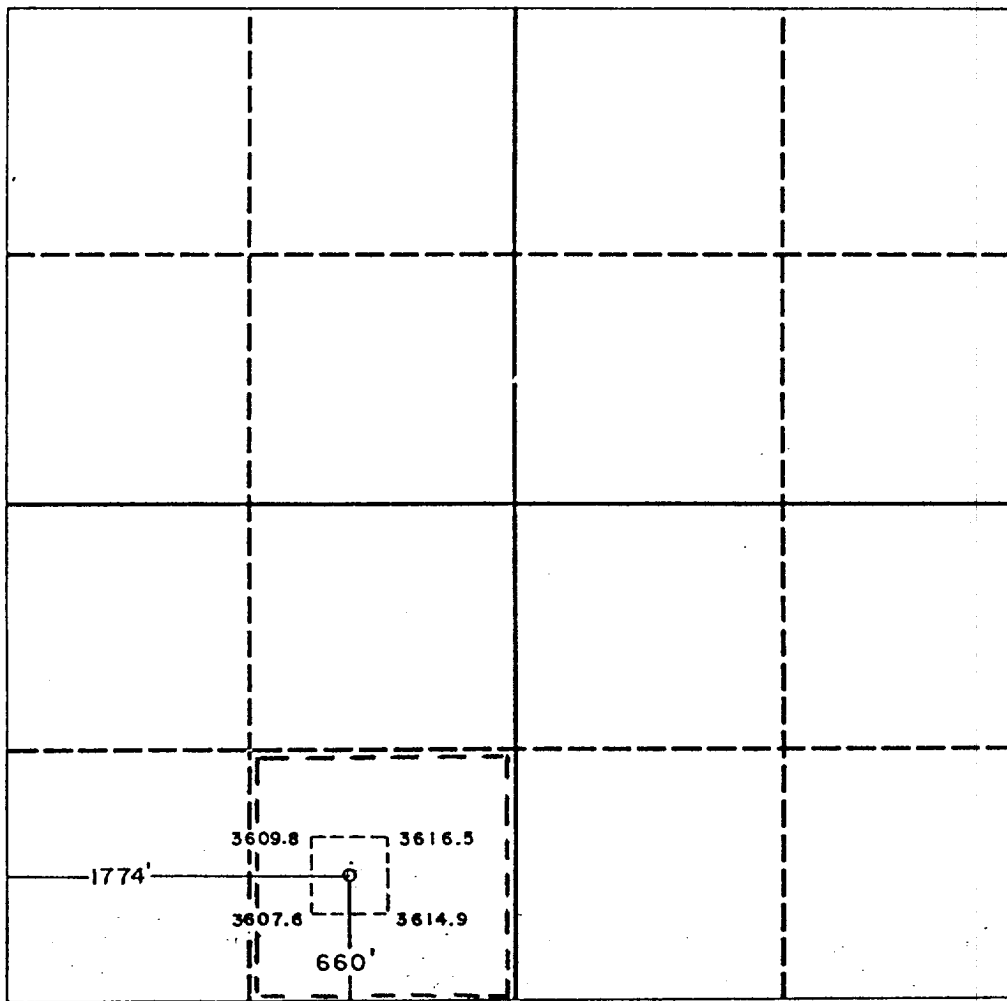
All Distances must be from the outer boundaries of the section

Operator COLLINS & WARE INC.			Lease E B W FEDERAL 31		Well No. 1
Unit Letter N	Section 31	Township 21 SOUTH	Range 32 EAST	County NMPM	LEA

Actual Footage Location of Well:
1774 feet from the WEST line and 660 feet from the SOUTH line

Ground level Elev. 3613.5	Producing Formation Delaware Brushy Canyon	Pool Northeast Under Livingston Ridge Delaware	Dedicated Acreage: 40 Acres
------------------------------	---	---	--------------------------------

- Outline the acreage dedicated to the subject well by colored pencil or hatchure marks on the plat below.
- If more than one lease is dedicated to the well, outline each and identify the ownership thereof (both as to working interest and royalty).
- If more than one lease of different ownership is dedicated to the well, have the interest of all owners been consolidated by communitization, unitization, force-pooling, etc.?
☐ Yes ☐ No If answer is "yes" type of consolidation _____
If answer is "no" list the owners and tract descriptions which have actually been consolidated. (Use reverse side of this form if necessary). _____
No allowable will be assigned to the well until all interests have been consolidated (by communitization, unitization, forced-pooling, or otherwise) or until a non-standard unit, eliminating such interest, has been approved by the Division.



OPERATOR CERTIFICATION

I hereby certify that the information contained herein is true and complete to the best of my knowledge and belief.

Signature <i>G. Thane Akins</i>
Printed Name G. Thane Akins
Position Agent
Company Collins & Ware, Inc.
Date 9-13-91

SURVEYOR CERTIFICATION

I hereby certify that the well location shown on this plat was plotted from field notes of actual surveys made by me or under my supervision, and that this same is true and correct to the best of my knowledge and belief.

Date Surveyed 8-26-91
Signature & Seal of Professional Surveyor <i>John W. West</i>
Certificate No. JOHN W. WEST, 676 RONALD J. EIDSON, 3239

SUPPLEMENTAL DRILLING DATA

COLLINS & WARE, INC.
E B W 31 FEDERAL WELL NO. 1

1. SURFACE FORMATION: Quaternary

2. ESTIMATED TOPS OF GEOLOGIC MARKERS:

Rustler Anhydrite	750'
Delaware	4450'
Bell Canyon	4550'
Cherry Canyon	5450'
Brushy Canyon	7200'

3. ANTICIPATED POSSIBLE HYDROCARBON BEARING ZONES:

Brushy Canyon	Oil
---------------	-----

4. PROPOSED CASING AND CEMENTING PROGRAM:

13 3/8" 48-61# K-55 ST&C casing is to be set at approximately 800' in 17 1/2" hole. Casing to be cemented with 500 sacks of light cement tailed in with 200 sacks of Class "C" with 2% CaCl. Cement to circulate.

8 5/8" 24-32# J-55 and S-80 ST&C casing is to be set at approximately 4500' in 12 1/4" hole. Casing is to be cemented with 1200 sacks of light cement tailed in with 200 sacks of Class "C" with 1% CaCl. Cement to circulate.

5 1/2" 15.5# and 20# K-55 and N-80 LT&C casing is to be set at 8700' in 7 7/8" hole. Casing is to be cemented with 600 sacks of Class "H" cement. Cement to tie back.

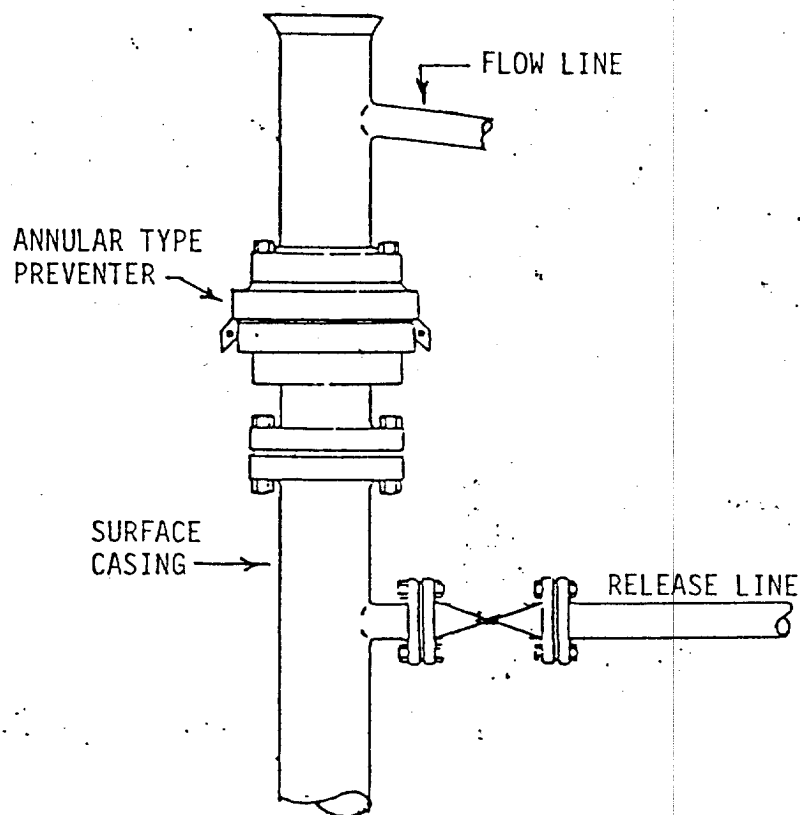
5. PRESSURE CONTROL EQUIPMENT:

Blowout prevention equipment, while drilling the 12 1/4" hole, will be either a 1500 psi working pressure double ram type preventer or a 1500 psi working pressure annular type preventer.

Blowout prevention equipment, while drilling below the 8 5/8" casing seat, will be a 3000 psi working pressure BOP stack. A BOP sketch is attached.

6. CIRCULATING MEDIUM:

Surface to 800':	Fresh water spud mud - Viscosity 30 to 36 as required for hole cleaning
800' to 4500':	Brine conditioned as necessary for control of viscosity, Weight 9.8-10, pH 9-10, Viscosity 32-36
4500' to T.D.:	Water-based drilling fluid conditioned as necessary for control of weight, viscosity, pH and water loss. Weight 9-10, Viscosity 38-45, pH 9-10, Filtrate while drilling pay zone 6-15



1500 PSI WORKING PRESSURE

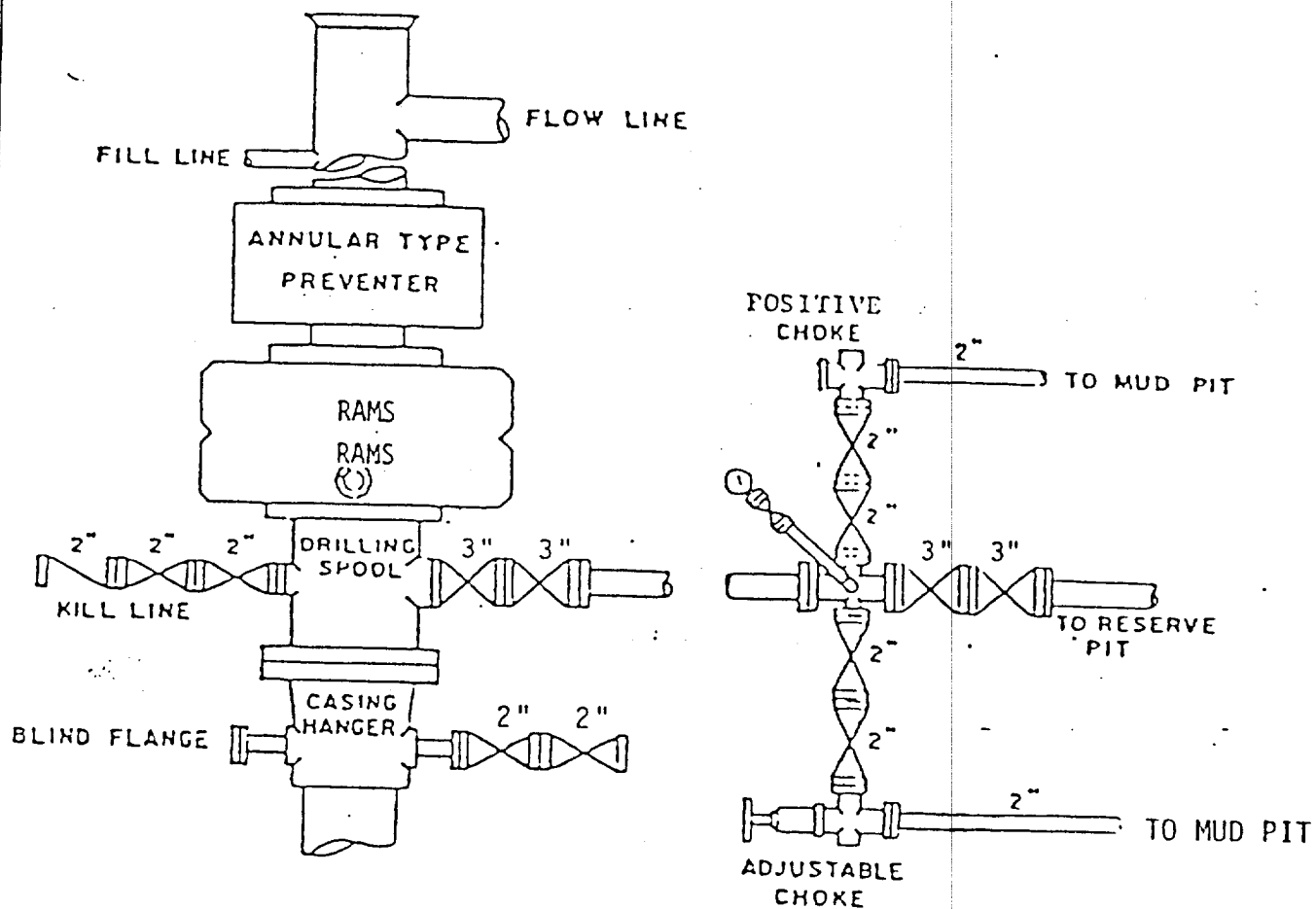
IN USE WHILE DRILLING BELOW
SURFACE CASING

BOP ARRANGEMENT

RECEIVED

OCT 21 1991

0-00
HOBBS OFFICE



BOP STACK

3000 PSI WORKING PRESSURE

IN USE WHILE DRILLING BELOW
8-5/8" CASING SEAT

BOP ARRANGEMENT