

All distances must be from the outer boundaries of the Section.

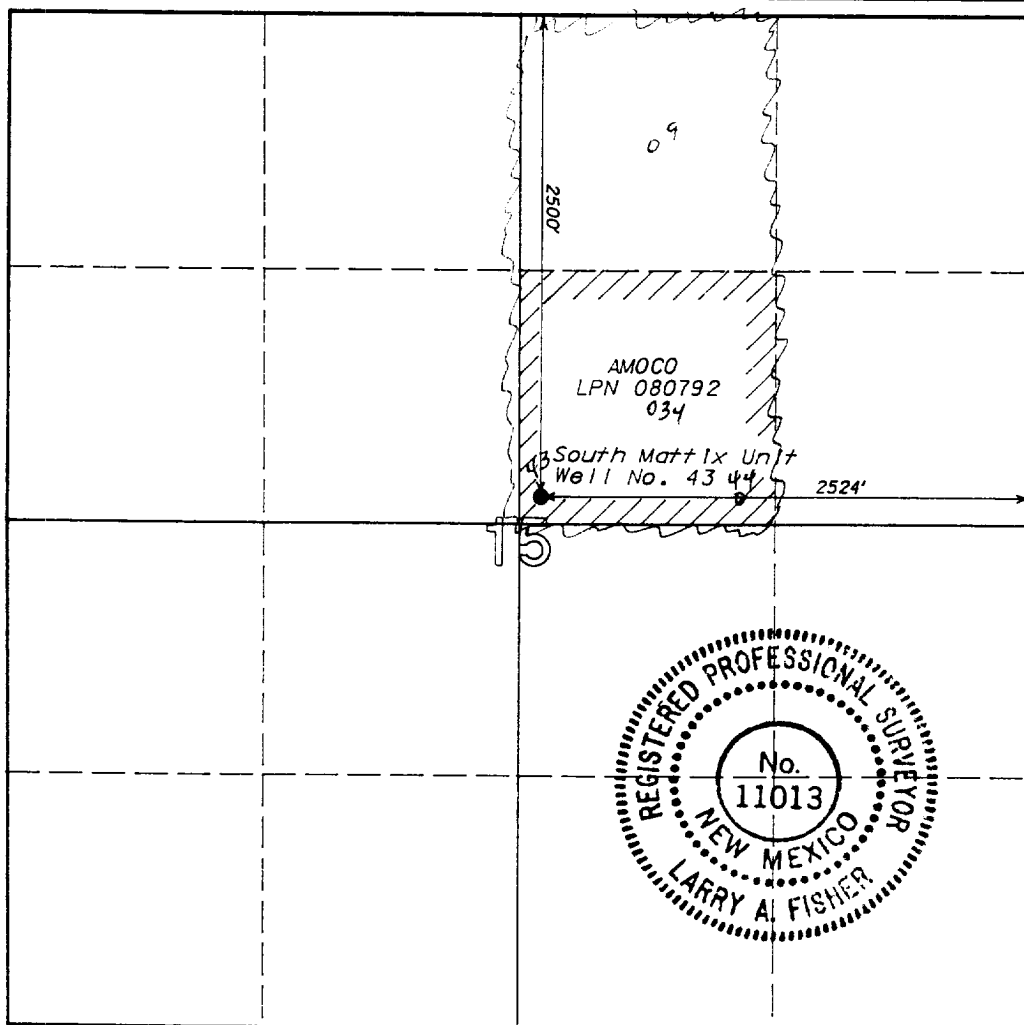
| | | | | | |
|--------------------------------------|--------------------------------------|-------------------------------|------------------------------------|--|----------------|
| Operator Amoco Production Company | | | Lease South Mattix Unit Federal | | Well No. 43 |
| Unit Letter G | Section 15 | Township 24 South | Range 37 East | County Lea | |
| Actual Footage Location of Well: | | | | | |
| 2524 feet from the East line and | | 2500 feet from the North line | | | |
| Ground Level Elev. 3243.9 | Producing Formation Lower Paddock | Pool Fowler (Upper Yeso) | | Dedicated Acreage: 40 30 Acres | |

1. Outline the acreage dedicated to the subject well by colored pencil or hatchure marks on the plat below.
2. If more than one lease is dedicated to the well, outline each and identify the ownership thereof (both as to working interest and royalty).
3. If more than one lease of different ownership is dedicated to the well, have the interests of all owners been consolidated by communitization, unitization, force-pooling, etc?

☐ Yes ☐ No If answer is "yes," type of consolidation _____

If answer is "no," list the owners and tract descriptions which have actually been consolidated. (Use reverse side of this form if necessary.) _____

No allowable will be assigned to the well until all interests have been consolidated (by communitization, unitization, forced-pooling, or otherwise) or until a non-standard unit, eliminating such interests, has been approved by the Division.



CERTIFICATION

I hereby certify that the information contained herein is true and complete to the best of my knowledge and belief.

Name
Kim A. Colman
Position
Asst. Admin. Analyst
Company
Amoco Production Company
Date
10-14-91

I hereby certify that the well location shown on this plat was plotted from field notes of actual surveys made by me or under my supervision, and that the same is true and correct to the best of my knowledge and belief.

Date Surveyed
September 16, 1991
Registered Land Surveyor
Larry A. Fisher
Certificate No.
11013

