

Submit to Appropriate
District Office
State Lease - 6 copies
Fee Lease - 5 copies

State of New Mexico
Energy, Minerals and Natural Resources Department

Form C-101
Revised 1-1-89

OIL CONSERVATION DIVISION

P.O. Box 2088
Santa Fe, New Mexico 87504-2088

DISTRICT I
P.O. Box 1980, Hobbs, NM 88240

DISTRICT II
P.O. Drawer DD, Artesia, NM 88210

DISTRICT III
1000 Rio Brazos Rd., Aztec, NM 87410

API NO. (assigned by OCD on New Wells)

30-025-31485

5. Indicate Type of Lease

STATE ☒

FEE ☐

6. State Oil & Gas Lease No.

B-9613

APPLICATION FOR PERMIT TO DRILL, DEEPEN, OR PLUG BACK

1a. Type of Work:

DRILL ☒

RE-ENTER ☐

DEEPEN ☐

PLUG BACK ☐

b. Type of Well:

OIL
WELL ☒

GAS
WELL ☐

OTHER ☐

SINGLE
ZONE ☒

MULTIPLE
ZONE ☐

7. Lease Name or Unit Agreement Name

WEST DOLLARHIDE DRINKARD UNIT

2. Name of Operator

TEXACO EXPLORATION AND PRODUCTION INC.

8. Well No.

117

3. Address of Operator

P. O. Box 3109, Midland, Texas 79702

9. Pool name or Wildcat

DOLLARHIDE TUBB DRINKARD

4. Well Location

Unit Letter D : 1098 Feet From The NORTH Line and 1270 Feet From The WEST Line

Section 5

Township 25-SOUTH

Range 38-EAST

NMPM

LEA

County

10. Proposed Depth

7475'

11. Formation

DRINKARD

12. Rotary or C.T.

ROTARY

13. Elevations (Show whether DF, RT, GR, etc.)

GR-3128'

14. Kind & Status Plug. Bond

BLANKET

15. Drilling Contractor

TO BE SELECTED

16. Approx. Date Work will start

JANUARY 2, 1992

17.

PROPOSED CASING AND CEMENT PROGRAM

SIZE OF HOLE	SIZE OF CASING	WEIGHT PER FOOT	SETTING DEPTH	SACKS OF CEMENT	EST. TOP
20	16	65#	40'	REDI-MIX	SURFACE
14 3/4	11 3/4	42#	1175'	890	SURFACE
11	8 5/8	32#	4200'	1380	SURFACE
7 7/8	5 1/2	15.5# & 17#	7475'	1440	SURFACE

CEMENTING PROGRAM: CONDUCTOR - REDIMIX.

SURFACE CASING - 530 SX CLASS H w/ 2% GEL & 2% CaCl₂ (14.8ppg, 1.36cf/s, 6.4gw/s). F/B 360 SX CLASS H w/ 2% CaCl₂ (15.6ppg, 1.19cf/s, 5.2gw/s).

INTERMEDIATE CASING - 910 SX 35/65 POZ CLASS H w/ 6% GEL, 5% SALT & 1/4# FLOCELE (12.8ppg, 1.87cf/s, 9.9gw/s). F/B 470 SX CLASS H w/ 2% CaCl₂ (15.6ppg, 1.19cf/s, 5.2gw/s).

PRODUCTION CASING - 1st STG: 250 SX 35/65 POZ CLASS H w/ 6% GEL, 5% SALT & 1/4# FLOCELE (12.8ppg, 1.87cf/s, 9.9gw/s). F/B 520 SX CLASS H (15.6ppg, 1.18cf/s, 5.2gw/s).

DV TOOL @ 4800' - 2nd STG: 620 SX 35/65 POZ CLASS H w/ 6% GEL, 5% SALT & 1/4# FLOCELE (12.8ppg, 1.87cf/s, 9.9gw/s). F/B 50 SX CLASS H (15.6ppg, 1.18cf/s, 5.2gw/s).

SIRGO OPERATES A WELL IN THIS QUARTER QUARTER SECTION AND HAS BEEN FURNISHED A COPY OF THIS APPLICATION. UNORTHODOX LOCATION - EXCEPTION HAS BEEN REQUESTED (COPY ATTACHED).

IN ABOVE SPACE DESCRIBE PROPOSED PROGRAM: IF PROPOSAL IS TO DEEPEN OR PLUG BACK, GIVE DATA ON PRESENT PRODUCTIVE ZONE AND PROPOSED NEW PRODUCTIVE ZONE. GIVE BLOWOUT PREVENTER PROGRAM, IF ANY.

I hereby certify that the information above is true and complete to the best of my knowledge and belief.

SIGNATURE C. P. Basham / cwh TITLE DRILLING OPERATIONS MANAGER DATE 12-10-91

TYPE OR PRINT NAME C. P. BASHAM

TELEPHONE NO. (915) 688-4620

(This space for State Use)

ORIGINAL SIGNED BY JERRY SEXTON

DISTRICT SUPERVISOR

APPROVED BY _____ TITLE _____ DATE _____

CONDITIONS OF APPROVAL, IF ANY:

7742-3086

JAN 10 '92

Permit Expires 6 Months From Approval
Date Unless Drilling Underway.

Submit to Appropriate
District Office
State Lease - 4 copies
Fee Lease - 3 copies

State of New Mexico
Energy, Minerals and Natural Resources Department

Form C-102
Revised 1-1-89

OIL CONSERVATION DIVISION

P.O. Box 2088
Santa Fe, New Mexico 87504-2088

DISTRICT I
P.O. Box 1980, Hobbs, NM 88240

DISTRICT II
P.O. Drawer DD, Artesia, NM 88210

DISTRICT III
1000 Rio Brazos Rd., Aztec, NM 87410

WELL LOCATION AND ACREAGE DEDICATION PLAT

All Distances must be from the outer boundaries of the section

Operator TEXACO EXPLORATION AND PRODUCTION INC.			Lease WEST DOLLARHIDE DRINKARD UNIT		Well No. 117
Unit Letter D	Section 5	Township 25 - SOUTH	Range 38 - EAST	County NMPM	LEA

Actual Footage Location of Well:

1098 feet from the NORTH line and		1270 feet from the WEST line	
Ground level Elev. 3128'	Producing Formation (ABO) AND TUBB DRINKARD(DRINKARD)	Pool DOLLARHIDE TUBB DRINKARD	Dedicated Acreage: 40 Acres

1. Outline the acreage dedicated to the subject well by colored pencil or inkhouse marks on the plat below.

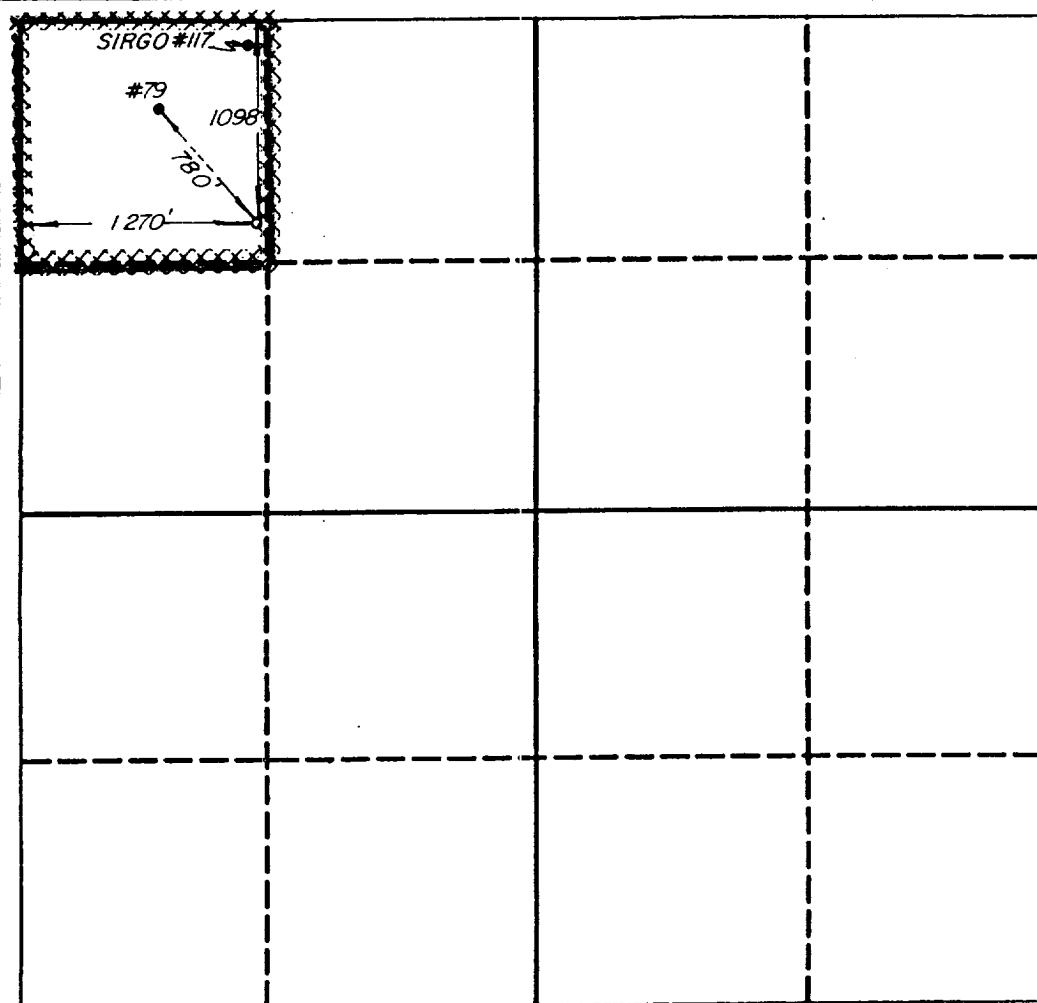
2. If more than one lease is dedicated to the well, outline each and identify the ownership thereof (both as to working interest and royalty).

3. If more than one lease of different ownership is dedicated to the well, have the interest of all owners been consolidated by communitization, unitization, force-pooling, etc.?

☐ Yes ☐ No If answer is "yes" type of consolidation

If answer is "no" list the owners and tract descriptions which have actually been consolidated. (Use reverse side of this form if necessary.)

No allowable will be assigned to the well until all interests have been consolidated (by communitization, unitization, forced-pooling, or otherwise) or until a non-standard unit, eliminating such interest, has been approved by the Division.



OPERATOR CERTIFICATION

I hereby certify that the information contained herein is true and complete to the best of my knowledge and belief.

Signature
R.D. Mariott

Printed Name
R. D. MARIOTT

Position
DIVISION SURVEYOR

Company TEXACO EXPLORATION
& PRODUCTION INC.

Date
12-9-91

SURVEYOR CERTIFICATION

I hereby certify that the well location shown on this plat was plotted from field notes of actual surveys made by me or under my supervision, and that the same is true and correct to the best of my knowledge and belief.

Date Surveyed
DECEMBER 5, 1991

Signature & Seal of
Professional Surveyor

Keith B. Lawrence
Certificate No.

4882

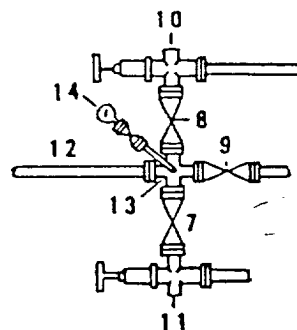
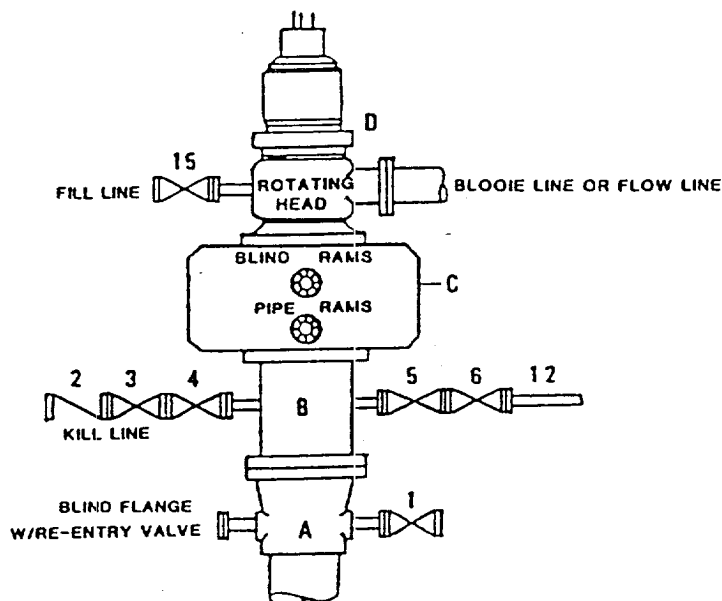
0 330 660 990 1320 1650 1980 2310 2640 2000 1500 1000 500 0

DRILLING CONTROL CONDITION II-B 3000 WP

FOR AIR DRILLING OR
WHERE NITROGEN OR AIR BLOWS ARE EXPECTED

H₂S TRIM REQUIRED

YES _____ NO _____



DRILLING CONTROL

MATERIAL LIST - CONDITION II - B

- A Texaco Wellhead
- B 3000# W.P. drilling spool with a 2" minimum flanged outlet for kill line and 3" minimum flanged outlet for choke line.
- C 3000# W.P. Dual ram type preventer, hydraulic operated with 1" steel, 3000# W.P. control lines (where sub-structure height is adequate, 2 - 3000# W.P. single ram type preventers may be utilized).
- D Rotating Head with fill up outlet and extended Blooe Line.
- 1,3,4, 7,8, 2" minimum 3000# W.P. flanged full opening steel gate valve, or Halliburton Lo Torc Plug valve.
- 2 2" minimum 3000# W.P. back pressure valve.
- 5,6,9 3" minimum 3000# W.P. flanged full opening steel gate valve, or Halliburton Lo Torc Plug valve.
- 12 3" minimum schedule 80, Grade "B", seamless line pipe.
- 13 2" minimum x 3" minimum 3000# W.P. flanged cross.
- 10,11 2" minimum 3000# W.P. adjustable choke bodies.
- 14 Cameron Mud Gauge or equivalent (location optional in choke line).
- 15 2" minimum 3000# W.P. flanged or threaded full opening steel gate valve, or Halliburton Lo Torc Plug valve.



TEXACO, INC.
MIDLAND DIVISION
MIDLAND, TEXAS



SCALE	DATE	EST. NO.	ORG. NO.
DRAWN BY:			
CHECKED BY:			
APPROVED BY:			

EXHIBIT C



Texaco USA
Producing Department
Midland Division

PO Box 3109
Midland TX 79702-3109

December 10, 1991

GOV - STATE AND LOCAL GOVERNMENTS

Unorthodox Locations

West Dollarhide Drinkard Unit

Well Nos. 113, 115, 116, 117, 119
120, 121, 122

Lea County, New Mexico

State of New Mexico

Energy and Minerals Department

Oil Conservation Division

P. O. Box 2088

Santa Fe, New Mexico 87501-2088

Attention: Mr. Michael E. Stogner

Gentlemen:

An exception, by administrative approval, to Rule 104 F.I. is requested for Texaco Producing Inc.'s West Dollarhide Drinkard Unit Well Nos. 113, 115, 116, 117, 119, 120, 121 and 122. The wells are located as follows:

Well No. 113: 136' FSL & 1246' FWL, Sec. 32, T-24-S, R-38-E
Well No. 115: 121' FNL & 1309' FEL, Sec. 5, T-25-S, R-38-E
Well No. 116: 67' FNL & 152' FWL, Sec. 4, T-25-S, R-38-E
Well No. 117: 1098' FNL & 1270' FWL, Sec. 5, T-25-S, R-38-E
Well No. 119: 1007' FNL & 1392' FEL, Sec. 5, T-25-S, R-38-E
Well No. 120: 2190' FNL & 2224' FWL, Sec. 32, T-24-S, R-38-E
Well No. 121: 2176' FNL & 656' FWL, Sec. 32, T-24-S, R-38-E
Well No. 122: 2055' FSL & 1981' FWL, Sec. 32, T-24-S, R-38-E

The wells must be drilled in these locations to ensure proper development on 10-acre spacing. Wells drilled previously on 10-acre spacing have proven to be viable wells. These wells will be completed in the Drinkard formation. Well Nos. 120, 121, and 122 will be injection wells.

It should be noted that there are no affected operators to Well Nos. 113, 115, 116, 119, 120, 121 or 122. Texaco is the only "affected" offset operator to Well No. 117 and we grant ourselves a waiver to this request.

Attached are Forms C-102 for each well and a lease plat showing the existing wells, and locations of the subject wells.

Yours very truly,

C. P. Basham / cwh

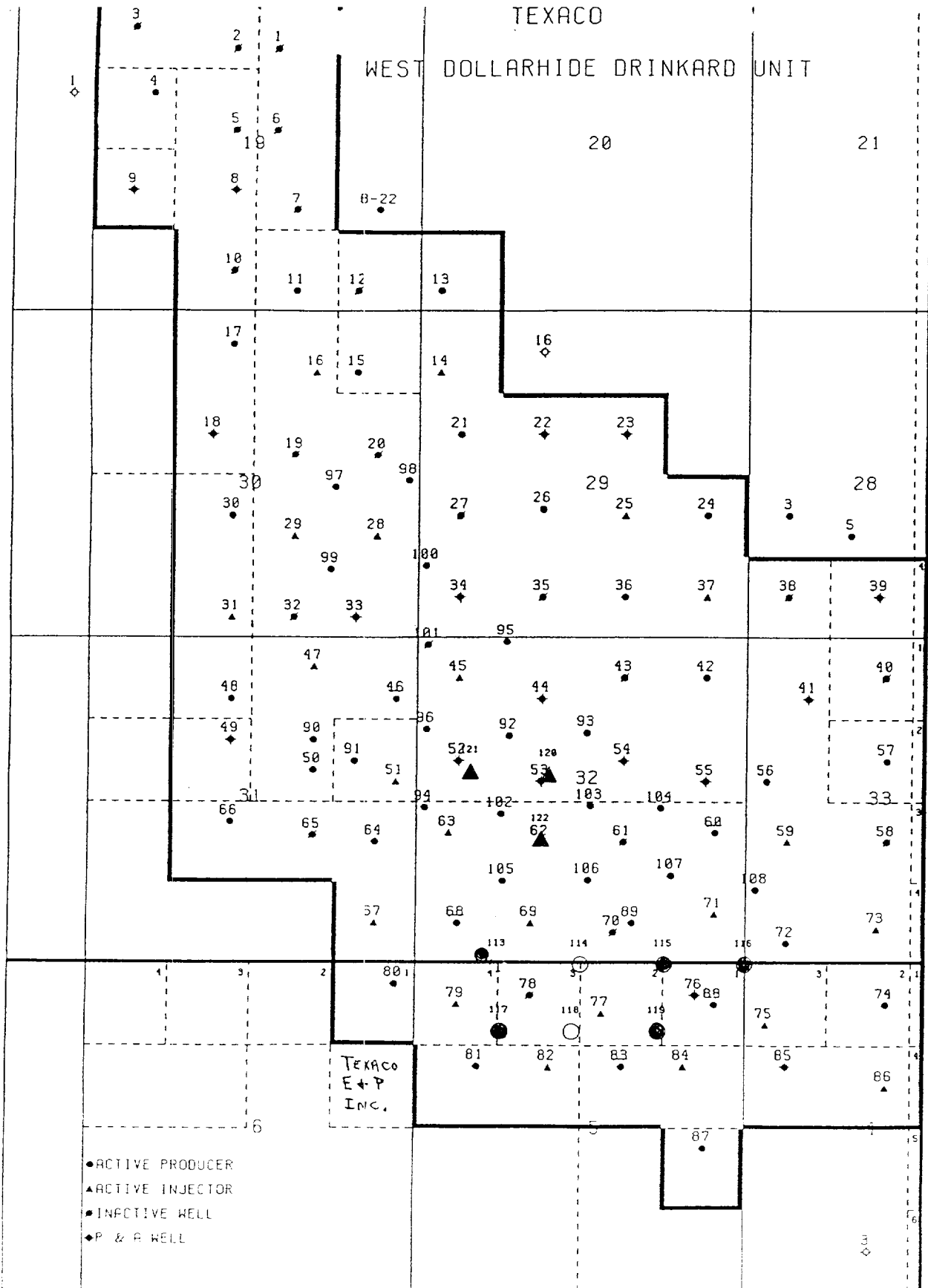
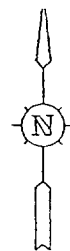
C. P. Basham

Drilling Operations Manager

CWH:cwh cc:NMOCD, P. O. Box 1980, Hobbs, NM 88240

TEXACO

WEST DOLLARHIDE DRINKARD UNIT



0 1000 2000 3000 4000 5000 FEET
0 0.5 1.0 STATUTE MILES