

UNITED STATES DEPARTMENT OF THE INTERIOR
BUREAU OF LAND MANAGEMENT

30-025-31496

APPLICATION FOR PERMIT TO DRILL, DEEPEN, OR PLUG BACK

1a. TYPE OF WORK

DRILL ☒

DEEPEN ☐

PLUG BACK ☐

b. TYPE OF WELL

OIL WELL ☒

GAS WELL ☐

OTHER

SINGLE ZONE ☒

MULTIPLE ZONE ☐

2. NAME OF OPERATOR

Collins & Ware, Inc.

3. ADDRESS OF OPERATOR

303 W. Wall, Ste 2200, Midland, TX 79701

4. LOCATION OF WELL (Report location clearly and in accordance with any State requirements.)*

At surface

660' FSL & 660' FEL Sec. 18, T21S, R32E, Lea County, NM

At proposed prod. zone

Same

14. DISTANCE IN MILES AND DIRECTION FROM NEAREST TOWN OR POST OFFICE*

35 air miles NE of Carlsbad, NM

15. DISTANCE FROM PROPOSED*

LOCATION TO NEAREST
PROPERTY OR LEASE LINE, FT.
(Also to nearest drlg. unit line, if any)

660'

16. NO. OF ACRES IN LEASE

1772.52

18. DISTANCE FROM PROPOSED LOCATION*

TO NEAREST WELL, DRILLING, COMPLETED,
OR APPLIED FOR, ON THIS LEASE, FT.

3000'

19. PROPOSED DEPTH

8700'

17. NO. OF ACRES ASSIGNED
TO THIS WELL

40

20. ROTARY OR CABLE TOOLS

Rotary

21. ELEVATIONS (Show whether DF, RT, GR, etc.)

3634.1 GR

Capitan Controlled Water Basin

22. APPROX. DATE WORK WILL START*

Upon receipt of permit

23.

PROPOSED CASING AND CEMENTING PROGRAM

R-111-P Potash Secretary's Potash

SIZE OF HOLE	SIZE OF CASING	WEIGHT PER FOOT	SETTING DEPTH	QUANTITY OF CEMENT
17 1/2"	13 3/8"	48-61#	800'	Sufficient to circulate
12 1/4"	8 5/8"	24-32#	4500'	Sufficient to circulate
7 7/8"	5 1/2"	15.5-20#	8700'	Sufficient to tie back with intermediate csg

The Operator proposes to drill to a depth sufficient to test the Bone Springs for oil. If productive, 5 1/2" casing will be set and cemented to TD. If non-productive, the well will be plugged and abandoned in a manner consistent with Federal and State regulations and according to prudent engineering practice. Specific programs according to Onshore Oil and Gas Order #1 are outlined in the following attachments:

1. Well Location and Acreage Dedication Plat

2. Drilling Program

Exhibits #1 & 1A - Blowout Preventers

3. Surface Use and Operating Plan

Exhibit #2 - Existing Roads

Exhibit #2A - Planned Access Roads

Exhibit #3 - One-Mile Radius Map

Exhibit #3A - Well Status

Exhibit #4 - Drilling Rig Layout

Exhibit #5 - Production Facilities Layout

IN ABOVE SPACE DESCRIBE PROPOSED PROGRAM: If proposal is to deepen or plug back, give data on present productive zone and proposed new productive zone. If proposal is to drill or deepen directionally, give pertinent data on subsurface locations and measured and true vertical depths. Give blowout preventer program, if any.

24.

SIGNED

G. Thane Akins

TITLE Agent

DATE 12/16/91

(This space for Federal or State office use)

PERMIT NO.

APPROVAL DATE

APPROVED BY

TITLE

DATE

CONDITIONS OR SPECIAL INSTRUCTIONS

GENERAL REQUIREMENTS AND
SPECIAL STIPULATIONS

ATTACHED

*See Instructions On Reverse Side

Submit to Appropriate
District Office
State Lease - 4 copies
Fee Lease - 3 copies

State of New Mexico
Energy, Minerals and Natural Resources Department

Form C-102
Revised 1-1-89

OIL CONSERVATION DIVISION

P.O. Box 2088
Santa Fe, New Mexico 87504-2088

DISTRICT I
P.O. Box 1980, Hobbs, NM 88240

DISTRICT II
P.O. Drawer DD, Artesia, NM 88210

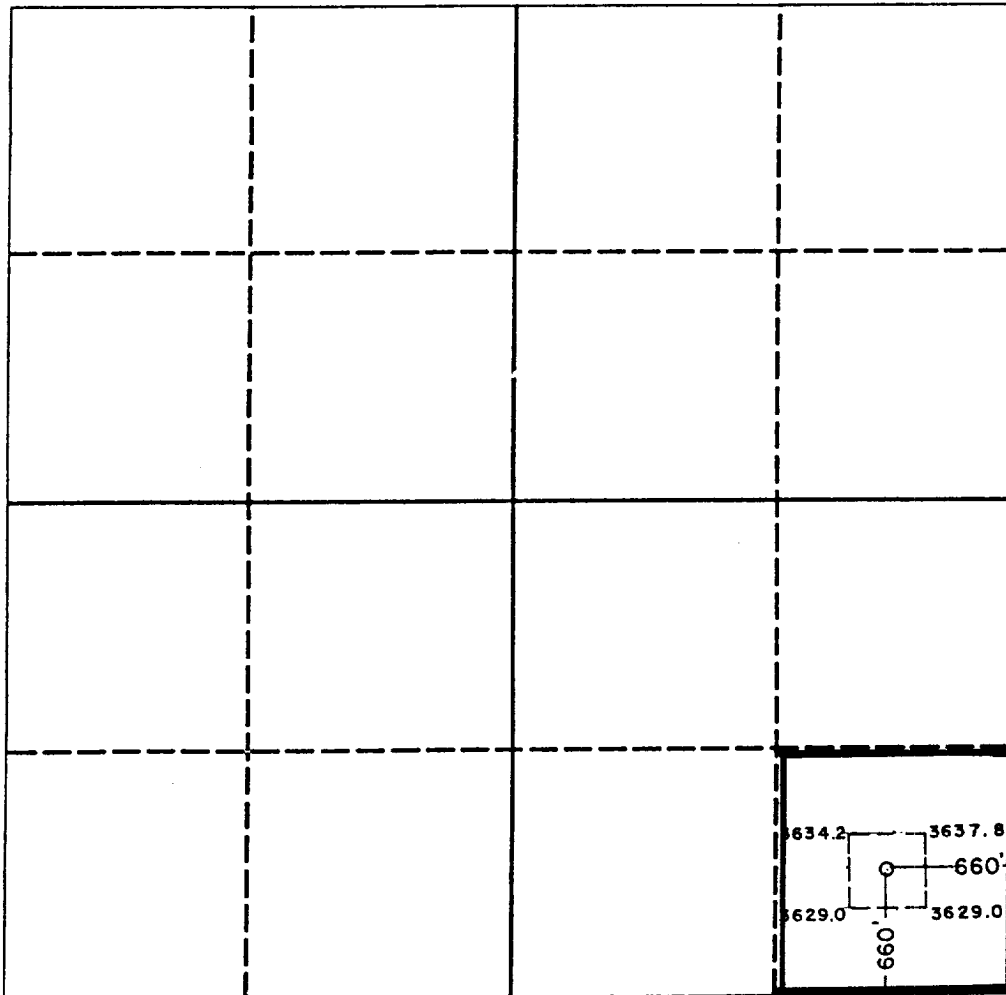
DISTRICT III
1000 Rio Brazos Rd., Aztec, NM 87410

WELL LOCATION AND ACREAGE DEDICATION PLAT

All Distances must be from the outer boundaries of the section

Operator COLLINS & WARE INC.			Lease N.L. FEDERAL ✓		Well No. 1
Unit Letter P	Section 18	Township 21 SOUTH	Range 32 EAST	County NMPM LEA	
Actual Footage Location of Well: 660 feet from the SOUTH line and 660 feet from the EAST line					
Ground level Elev. 3634.1	Producing Formation Delaware Brushy Canyon		Pool wildcat Unders. Livingston Ridge	Dedicated Acreage: 40 Acres	

1. Outline the acreage dedicated to the subject well by colored pencil or hatchure marks on the plat below.
2. If more than one lease is dedicated to the well, outline each and identify the ownership thereof (both as to working interest and royalty).
3. If more than one lease of different ownership is dedicated to the well, have the interest of all owners been consolidated by communitization, unitization, force-pooling, etc.?
☐ Yes ☐ No If answer is "yes" type of consolidation _____
If answer is "no" list the owners and tract descriptions which have actually been consolidated. (Use reverse side of this form if necessary.) _____
No allowable will be assigned to the well until all interests have been consolidated (by communitization, unitization, forced-pooling, or otherwise) or until a non-standard unit, eliminating such interest, has been approved by the Division.



OPERATOR CERTIFICATION

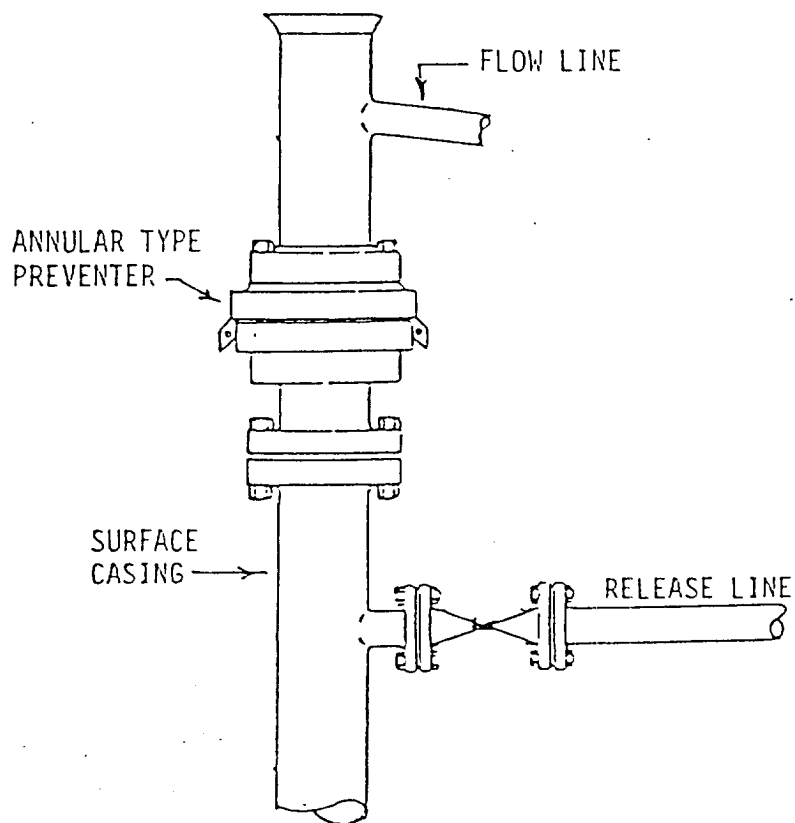
I hereby certify that the information contained herein is true and complete to the best of my knowledge and belief.

Signature
G. Thane Akins
Printed Name
G. Thane Akins
Position
Agent
Company
Collins & Ware, Inc.
Date
12/16/91

SURVEYOR CERTIFICATION

I hereby certify that the well location shown on this plat was plotted from field notes of actual surveys made by me or under my supervision, and that the same is true and correct to the best of my knowledge and belief.

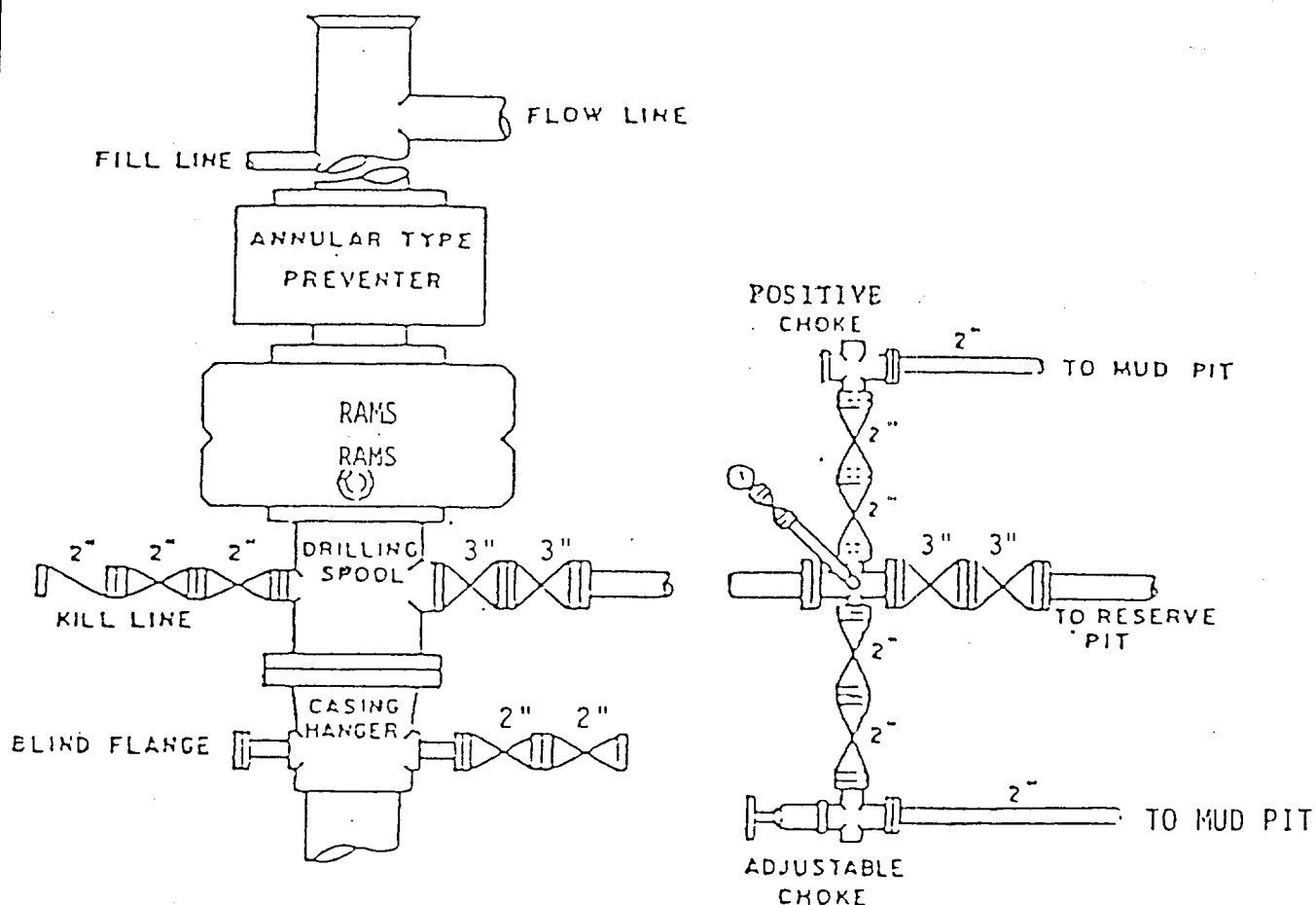
Date Surveyed
10-22-91
Signature & Seal of Professional Surveyor
Ronald J. Eidson
Certificate No. JOHN W. WEST 676
RONALD J. EIDSON 3239
NEW MEXICO
REGISTERED LAND SURVEYOR



1500 PSI WORKING PRESSURE

IN USE WHILE DRILLING BELOW
SURFACE CASING

Exhibit No. 1
BOP ARRANGEMENT



BOP STACK

3000 PSI WORKING PRESSURE

IN USE WHILE DRILLING BELOW
8-5/8" CASING SEAT

Exhibit No. 2
BOP ARRANGEMENT