

UNITED STATES
DEPARTMENT OF THE INTERIOR
BUREAU OF LAND MANAGEMENT
ROBES, NEW MEXICO 86202

SUBMIT IN ORIGINAL
(Other in three on reverse side)

30-025-31755
Form approved
Budget Bureau No. 1004-0136
Expires August 31, 1985

LEASE DESIGNATION AND SERIAL NO.

NM-69377

6. IF INDIAN, ALLOTTEE OR TRIBE NAME

7. UNIT AGREEMENT NAME

8. FARM OR LEASE NAME

RED TANK 28 FEDERAL

9. WELL NO.

4

10. FIELD AND POOL, OR WILDCAT UNDES.

E. LIVINGSTON RIDGE DELAWARE

11. SEC., T., R., M., OR BLK.
AND SURVEY OR AREA

SEC. 28, T. 22 S., R. 32 E.

12. COUNTY OR PARISH

13. STATE

LEA COUNTY

NEW MEXICO

1a. TYPE OF WORK

DRILL ☒

DEEPEN ☐

PLUG BACK ☐

b. TYPE OF WELL

OIL
WELL ☒

GAS
WELL ☐

OTHER

SINGLE
ZONE ☒

MULTIPLE
ZONE ☐

2. NAME OF OPERATOR

POGO PRODUCING COMPANY

3. ADDRESS OF OPERATOR

P.O. BOX 10340, MIDLAND, TEXAS 79702

4. LOCATION OF WELL (Report location clearly and in accordance with any State requirements.)

At surface

330' FSL AND 2310' FEL OF SECTION 28

At proposed prod. zone

14. DISTANCE IN MILES AND DIRECTION FROM NEAREST TOWN OR POST OFFICE*

30 AIR MILES WEST OF EUNICE, NEW MEXICO

10. DISTANCE FROM PROPOSED*

LOCATION TO NEAREST
PROPERTY OR LEASE LINE, FT.
(Also to nearest drlg. unit line, if any)

330'

16. NO. OF ACRES IN LEASE

320

17. NO. OF ACRES ASSIGNED
TO THIS WELL

40

18. DISTANCE FROM PROPOSED LOCATION*
TO NEAREST WELL, DRILLING, COMPLETED,
OR APPLIED FOR, ON THIS LEASE, FT.

1650'

19. PROPOSED DEPTH

9000'

20. ROTARY OR CABLE TOOLS

ROTARY

21. ELEVATIONS (Show whether DF, RT, GR, etc.)

3579.9' GR

22. APPROX. DATE WORK WILL START*

UPON APPROVAL

23.

PROPOSED CASING AND CEMENTING PROGRAM

SIZE OF HOLE	SIZE OF CASING	WEIGHT PER FOOT	SETTING DEPTH	QUANTITY OF CEMENT
17-1/2"	13-3/8"	54.5#	800'	SUFFICIENT TO CIRCULATE
11"	8-5/8"	24# & 32#	4600'	SUFFICIENT TO CIRCULATE
7-7/8"	5-1/2"	17#	9000'	TO TIE BACK TO 3600'

AFTER SETTING PRODUCTION CASING, PAY ZONE WILL BE PERFORATED
AND STIMULATED AS NECESSARY.

SEE ATTACHED FOR: SUPPLEMENTAL DRILLING DATA
BOP SKETCH
SURFACE USE AND OPERATIONS PLAN

IN ABOVE SPACE DESCRIBE PROPOSED PROGRAM: If proposal is to deepen or plug back, give data on present productive zone and proposed new productive zone. If proposal is to drill or deepen directionally, give pertinent data on subsurface locations and measured and true vertical depths. Give blowout preventer program, if any.

24.

SIGNED

Richard L. Wright
Richard L. Wright

TITLE Division Operations Supr.

DATE September 25, 1992

(This space for Federal or State office use)

PERMIT NO.

APPROVAL DATE

APPROVED BY

CONDITIONS OF APPROVAL, IF ANY:

SUBJECT TO
GENERAL REQUIREMENTS AND
SPECIAL STIPULATIONS

TITLE

AREA MANAGER

CARLEAD RESOURCE AREA

DATE

10-13-92

*See Instructions On Reverse Side

OIL CONSERVATION DIVISION

P.O. Box 2088
Santa Fe, New Mexico 87504-2088

DISTRICT I

P.O. Box 1980, Hobbs, NM 88240

DISTRICT II

P.O. Drawer DD, Artesia, NM 88210

DISTRICT III

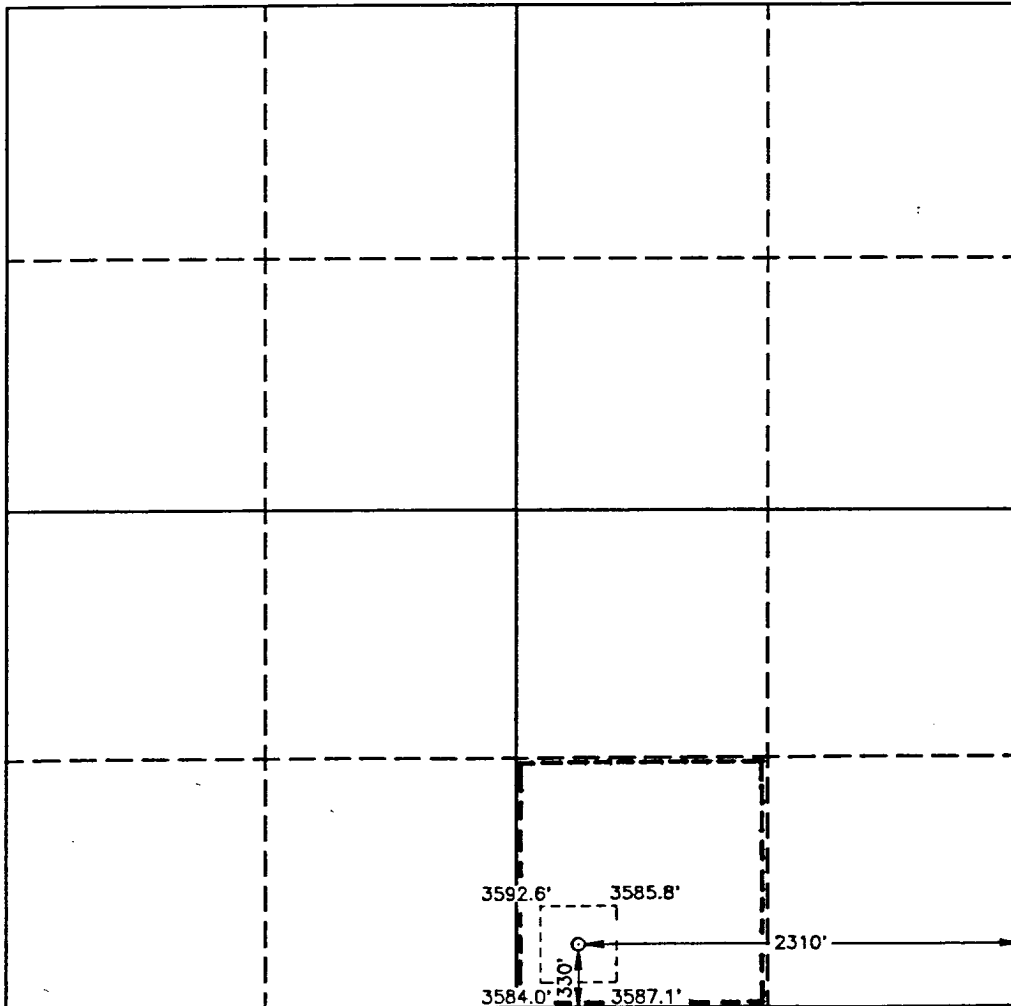
1000 Rio Brazos Rd., Artec, NM 87410

WELL LOCATION AND ACREAGE DEDICATION PLAT

All Distances must be from the outer boundaries of the section

Operator POGO PRODUCING CO.			Lease RED TANK 28 FEDERAL		Well No. 4
Unit Letter 0	Section 28	Township 22 SOUTH	Range 32 EAST	NMPM	County LEA
Actual Footage Location of Well: 330 feet from the SOUTH line and 2310 feet from the EAST line					
Ground Level Elev. 3579.9'	Producing Formation DELAWARE		Pool UNDESIGNATED EAST LIVINGSTON RIDGE DELAWARE		Dedicated Acreage: 40 Acres

- Outline the acreage dedicated to the subject well by colored pencil or hatchure marks on the plat below.
 - If more than one lease is dedicated to the well, outline each and identify the ownership thereof (both as to working interest and royalty).
 - If more than one lease of different ownership is dedicated to the well, have the interest of all owners been consolidated by communitization, unitization, force-pooling, etc?
☐ Yes ☐ No If answer is "yes" type of consolidation _____
- If answer is "no" list of owners and tract descriptions which have actually been consolidated. (Use reverse side of this form necessary.) _____
- No allowable will be assigned to the well unit all interests have been consolidated (by communitization, unitization, forced-pooling, otherwise) or until a non-standard unit, eliminating such interest, has been approved by the Division.



OPERATOR CERTIFICATION

I hereby certify the the information contained herein is true and complete to the best of my knowledge and belief.

Signature *Richard L. Wright*
Printed Name **Richard L. Wright**
Position **Division Operations Supr.**
Company **POGO PRODUCING COMPANY**
Date **September 24, 1992**

SURVEYOR CERTIFICATION

I hereby certify that the well location shown on this plat was plotted from field notes of actual surveys made by me or under my supervision and that the same is true and correct to the best of my knowledge and belief.

Date Surveyed **AUGUST 20, 1992**
Signature & Seal of Professional Surveyor

Donald J. Edson
Certificate No. **13239**
JOHN W. WEST, 7876
DONALD J. EDSON, 8239
7877

SUPPLEMENTAL DRILLING DATA
POGO PRODUCING COMPANY
RED TANK 28 FEDERAL WELL NO. 4

1. SURFACE FORMATION: Quaternary.

2. ESTIMATED TOPS OF GEOLOGIC MARKERS:

Rustler Anhydrite	800'
Delaware Lime	4600'
Cherry Canyon	5900'

3. ANTICIPATED POSSIBLE HYDROCARBON BEARING ZONES:

Delaware	Oil
----------	-----

4. PROPOSED CASING AND CEMENTING PROGRAM:

CASING SIZE	SETTING DEPTH		WEIGHT	GRADE	JOINT
	FROM	TO			
13-3/8"	0	800'	54.5#	J-55	STC
8-5/8"	0	1000'	32#	J-55	STC
"	1000'	2200'	24#	J-55	STC
"	2200'	4600'	32#	J-55	STC
5-1/2"	0	1000'	17#	N-80	LTC
"	1000'	6500'	17#	J-55	STC
"	6500'	9000'	17#	N-80	LTC

MINIMUM DESIGN FACTORS: Collapse 1.125 Burst: 1.1 TENSION 1.7

13-3/8" casing to be cemented with 500 sacks of Light followed by 200 sacks of Class "C" with 2% CaCl. Cement to circulate.

8-5/8" casing to be cemented with 1200 sacks of Light cement with 10% salt followed by 200 sacks of Class "C" cement with 1% CaCl. Cement to circulate.

5-1/2" casing to be cemented with approximately 500 sacks of Light cement followed by 700 sacks of Class "H". If need for a stage tool is indicated, it will be positioned to best suit hole conditions at time casing is run. Cement to tie back to 3600 feet.

Cement may have lost circulation or other additives depending on hole

conditions at the time casing is run.

5. PRESSURE CONTROL EQUIPMENT:

Blowout prevention equipment, while drilling the 11" hole, will be either a 3000 psi working pressure double ram type preventer or a 3000 psi working pressure annular type preventer.

Blow out prevention equipment, while drilling below the 8-5/8" casing seat, will be a 3000 psi working pressure BOP stack. A BOP sketch is attached.

6. CIRCULATING MEDIUM:

Surface to 800 feet: Fresh water spud mud. Viscosity 30 to 36 as required for hole cleaning.

800 feet to 4600 feet: Brine conditioned as necessary for control of viscosity. Weight 9.8 to 10. pH 9 to 10. Viscosity 32 to 36.

4600 feet to T.D.: Water base drilling fluid conditioned as necessary for control of weight, viscosity, pH and water-loss. Weight 9 to 10. Viscosity 38-45. pH 9 to 10. Filtrate while drilling pay zone 6 to 15.

7. AUXILIARY EQUIPMENT:

A mud logging trailer will be in use while drilling below the intermediate casing.

8. TESTING, LOGGING, AND CORING PROGRAMS:

Drill stem tests will be made when well data indicate a test is warranted.

It is planned that electric logs will include GR-CNL-Density logs and GR-DLL logs.

No coring is planned.

9. ABNORMAL PRESSURES, TEMPERATURES, OR HYDROGEN SULFIDE GAS:

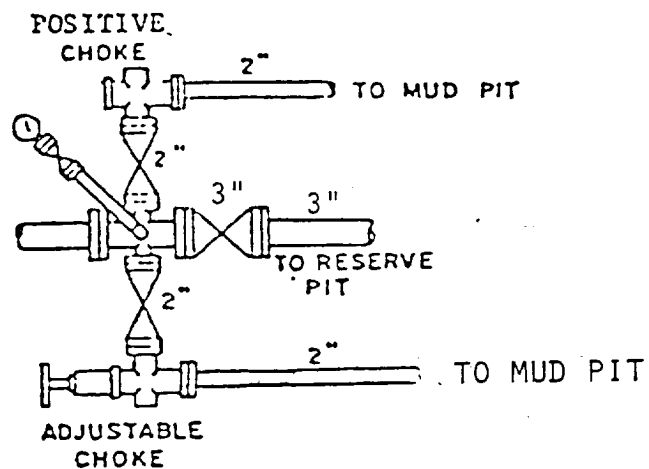
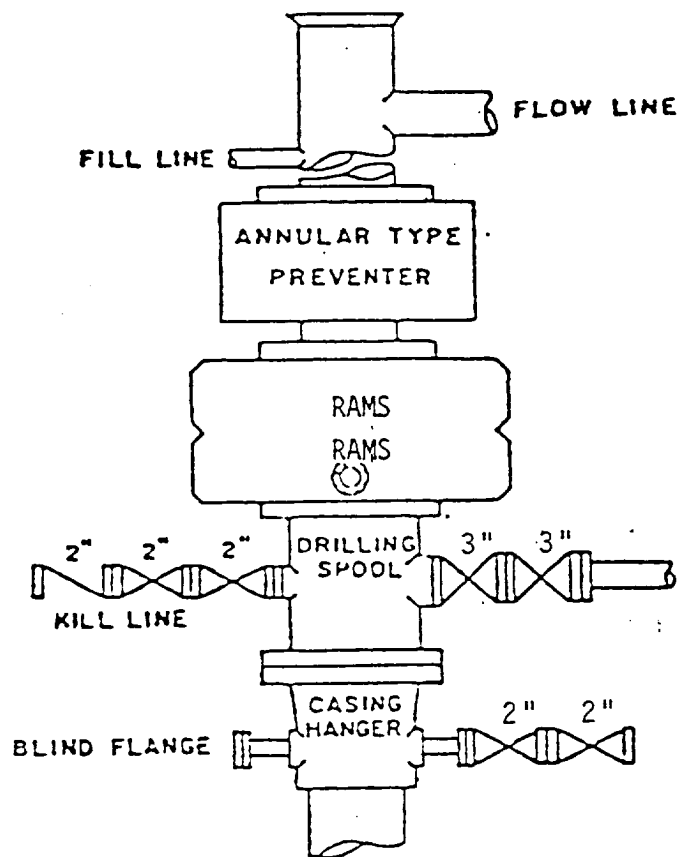
None anticipated.

Expected bottom hole pressure is approximately 3500 psi.

Expected bottom hole temperature is approximately 125 degrees Fahr.

10. ANTICIPATED STARTING DATE:

It is planned that operations will commence upon approval of this application, with drilling and completion operations lasting about 45 days.



BOP STACK

3000 PSI WORKING PRESSURE

BOP ARRANGEMENT