

UNITED STATES  
DEPARTMENT OF THE INTERIOR  
BUREAU OF LAND MANAGEMENT

APPLICATION FOR PERMIT TO DRILL, DEEPEN, OR PLUG BACK

1a. TYPE OF WORK

DRILL ☒

DEEPEN ☐

PLUG BACK ☐

b. TYPE OF WELL

OIL  
WELL ☒

GAS  
WELL ☐

OTHER

SINGLE  
ZONE ☒

MULTIPLE  
ZONE ☐

2. NAME OF OPERATOR

POGO PRODUCING COMPANY

3. ADDRESS OF OPERATOR

P.O. BOX 10340, MIDLAND, TEXAS 79702

4. LOCATION OF WELL (Report location clearly and in accordance with any State requirements.)\*

At surface

Zone 14  
At proposed prod. zone

2080' FNL AND 660' FEL OF SECTION 26

14. DISTANCE IN MILES AND DIRECTION FROM NEAREST TOWN OR POST OFFICE\*

29 MILES WEST OF EUNICE, NEW MEXICO

16. DISTANCE FROM PROPOSED\*  
LOCATION TO NEAREST  
PROPERTY OR LEASE LINE, FT.  
(Also to nearest drilg. unit line, if any)

1980'

16. NO. OF ACRES IN LEASE

1280

17. NO. OF ACRES ASSIGNED  
TO THIS WELL

40

18. DISTANCE FROM PROPOSED LOCATION\*  
TO NEAREST WELL, DRILLING, COMPLETED,  
OR APPLIED FOR, ON THIS LEASE, FT.

1220'

19. PROPOSED DEPTH

10,200'

20. ROTARY OR CABLE TOOLS

ROTARY

21. ELEVATIONS (Show whether DF, RT, GR, etc.)

3753.4 GR

22. APPROX. DATE WORK WILL START\*

UPON APPROVAL

23.

PROPOSED CASING AND CEMENTING PROGRAM

SIZE OF HOLE	SIZE OF CASING	WEIGHT PER FOOT	SETTING DEPTH	QUANTITY OF CEMENT
17-1/2"	13-3/8"	54.5#	850'	SUFFICIENT TO CIRCULATE
11"	8-5/8"	32#	4750'	SUFFICIENT TO CIRCULATE
7-7/8"	5-1/2"	17#	10,200'	TO TIE BACK TO 3800'

AFTER SETTING PRODUCTION CASING, PAY ZONE WILL BE PERFORATED  
AND STIMULATED AS NECESSARY.

SEE ATTACHED FOR: SUPPLEMENTAL DRILLING DATA  
BOP SKETCH  
SURFACE USE AND OPERATIONS PLAN



IN ABOVE SPACE DESCRIBE PROPOSED PROGRAM: If proposal is to deepen or plug back, give data on present productive zone and proposed new productive zone. If proposal is to drill or deepen directionally, give pertinent data on subsurface locations and measured and true vertical depths. Give blowout preventer program, if any.

24.

SIGNED

*Richard L. Wright*  
Richard L. Wright

TITLE Division Operations Supr.

DATE November 25, 1992

(This space for Federal or State office use)

PERMIT NO.

APPROVAL DATE

APPROVED BY

TITLE

DATE

12-14-92

CONDITIONS OF APPROVAL, IF ANY:

APPROVAL SUBJECT TO  
GENERAL REQUIREMENTS AND  
SPECIAL STIPULATIONS

\*See Instructions On Reverse Side

RECEIVED

JAN 08 1993

GOO HOBBS OFFICE

## OIL CONSERVATION DIVISION

DISTRICT I  
P.O. Box 1980, Hobbs, NM 88240

DISTRICT II  
P.O. Drawer DD, Artesia, NM 88210

DISTRICT III  
1000 Rio Brazos Rd., Artec, NM 87410

P.O. Box 2088  
Santa Fe, New Mexico 87504-2088

### WELL LOCATION AND ACREAGE DEDICATION PLAT

All Distances must be from the outer boundaries of the section

Operator <b>POGO PRODUCING CO.</b>			Lease <b>COVINGTON "A" FEDERAL</b>		Well No. <b>17</b>
Unit Letter <b>H</b>	Section <b>26</b>	Township <b>22 SOUTH</b>	Range <b>32 EAST</b>	County <b>NMPM LEA</b>	

Actual Footage Location of Well:

2080 feet from the <b>NORTH</b> line and		660 feet from the <b>EAST</b> line	
Ground Level Elev. <b>3753.4'</b>	Producing Formation <b>BONE SPRINGS</b>	Pool <b>UNDES. RED TANK BONE SPRINGS</b>	Dedicated Acreage: <b>40</b> Acres

1. Outline the acreage dedicated to the subject well by colored pencil or hachure marks on the plat below.

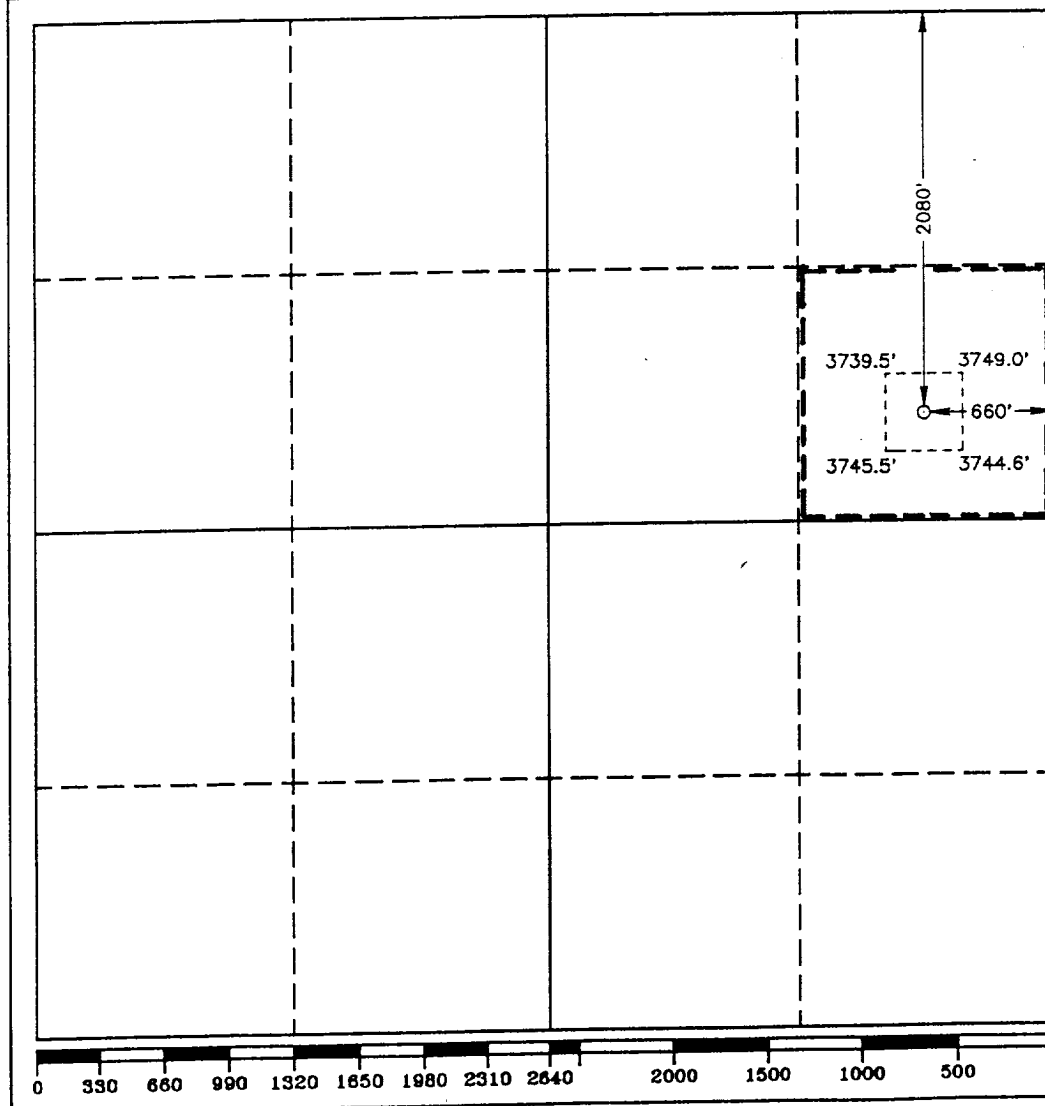
2. If more than one lease is dedicated to the well, outline each and identify the ownership thereof (both as to working interest and royalty).

3. If more than one lease of different ownership is dedicated to the well, have the interest of all owners been consolidated by communitization, unitization, force-pooling, etc.?

☐ Yes ☐ No If answer is "yes" type of consolidation \_\_\_\_\_

If answer is "no" list of owners and tract descriptions which have actually been consolidated. (Use reverse side of this form necessary.)

No allowable will be assigned to the well unit all interests have been consolidated (by communitization, unitization, forced-pooling, otherwise) or until a non-standard unit, eliminating such interest, has been approved by the Division.



#### OPERATOR CERTIFICATION

I hereby certify that the information contained herein is true and complete to the best of my knowledge and belief.

Signature: *Richard L. Wright*

Printed Name: **Richard L. Wright**

Position: **Division Operations Supr.**

Company: **POGO PRODUCING COMPANY**

Date: **November 19, 1992**

#### SURVEYOR CERTIFICATION

I hereby certify that the well location shown on this plat was plotted from field notes of actual surveys made by me or under my supervision and that the same is true and correct to the best of my knowledge and belief.

Date Surveyed: **OCTOBER 1, 1992**

Signature & Seal of Professional Surveyor

*Gary L. Jones*  
Certificate No. **JOHN W. WEST, 676**  
**RONALD EIDSON, 3239**  
**GARY L. JONES, 7977**

92-11-1405

SUPPLEMENTAL DRILLING DATA  
POGO PRODUCING COMPANY  
COVINGTON "A" FEDERAL WELL NO.17

1. SURFACE FORMATION: Quaternary.

2. ESTIMATED TOPS OF GEOLOGIC MARKERS:

Anhydrite	900'
Delaware Lime	4800'
Cherry Canyon	6100'
Brushy Canyon	7400'
Bone Springs	8800'

3. ANTICIPATED POSSIBLE HYDROCARBON BEARING ZONES:

Delaware	Oil
Bone Springs	Oil

4. PROPOSED CASING AND CEMENTING PROGRAM:

CASING SIZE	SETTING DEPTH		WEIGHT	GRADE	JOINT
	FROM	TO			
13-3/8"	0	850'	54.5#	J-55	STC
8-5/8"	0	4500'	32#	J-55	STC
"	4500'	4750'	32#	S-80	STC
5-1/2"	0	1000'	17#	N-80	LTC
"	1000'	6500'	17#	J-55	LTC
"	6500'	10,200'	17#	N-80	LTC

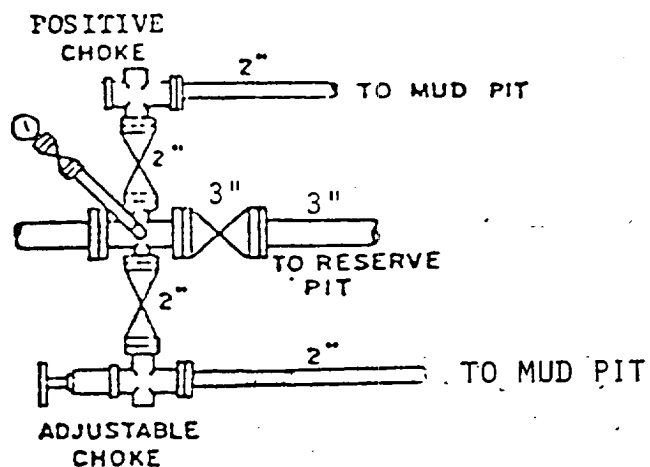
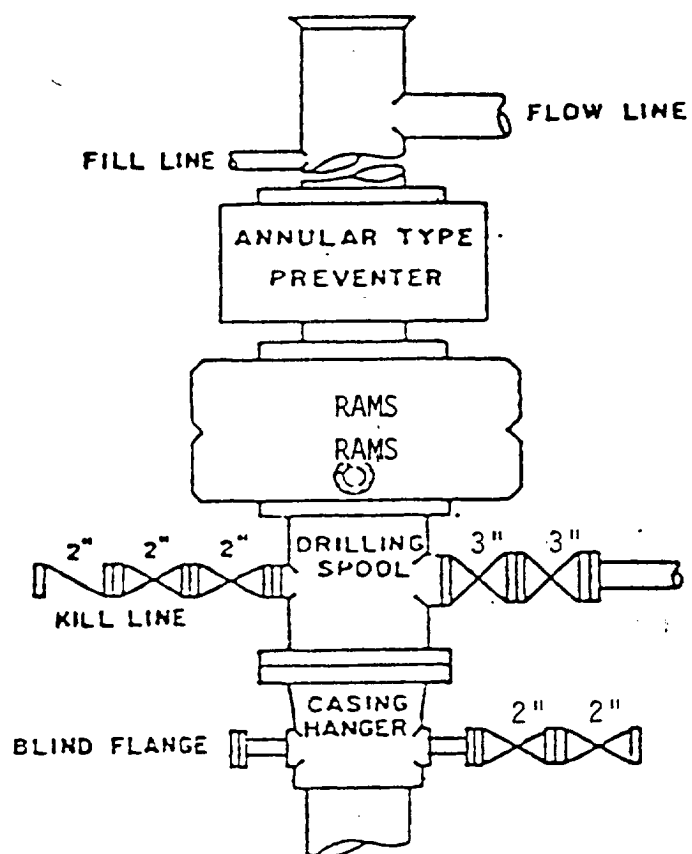
MINIMUM

DESIGN FACTORS: COLLAPSE 1.125 BURST 1.1 TENSION 1.7

13-3/8" casing to be cemented with 500 sacks of light cement tailed in with 200 sacks of Class "C" with 2% CaCl. Cement to circulate.

8-5/8" casing to be cemented with 1200 sacks of light cement with 10% salt tailed in with 200 sacks of premium cement with 1% CaCl. Cement to circulate.

5-1/2" production casing is to be cemented in three stages with staging



BOP STACK

3000 PSI WORKING PRESSURE

BOP ARRANGEMENT