

UNITED STATES
DEPARTMENT OF THE INTERIOR
BUREAU OF LAND MANAGEMENT

APPLICATION FOR PERMIT TO DRILL, DEEPEN, OR PLUG BACK

1a. TYPE OF WORK

DRILL ☒

DEEPEN ☐

PLUG BACK ☐

b. TYPE OF WELL

OIL
WELL ☒

GAS
WELL ☐

OTHER

SINGLE
ZONE ☒

MULTIPLE
ZONE ☐

2. NAME OF OPERATOR

POGO PRODUCING COMPANY

3. ADDRESS OF OPERATOR

P.O. BOX 10340, MIDLAND, TEXAS 79702

4. LOCATION OF WELL (Report location clearly and in accordance with any State requirements.)*

At surface

1980' FSL AND 660' FEL OF SECTION 26

At proposed prod. zone

14. DISTANCE IN MILES AND DIRECTION FROM NEAREST TOWN OR POST OFFICE*

29 MILES WEST OF EUNICE, NEW MEXICO

10. DISTANCE FROM PROPOSED*

LOCATION TO NEAREST
PROPERTY OR LEASE LINE, FT.
(Also to nearest drilg. unit line, if any)

1980'

16. NO. OF ACRES IN LEASE

1280

17. NO. OF ACRES ASSIGNED
TO THIS WELL

40

18. DISTANCE FROM PROPOSED LOCATION*

TO NEAREST WELL, DRILLING, COMPLETED,
OR APPLIED FOR, ON THIS LEASE, FT.

1220'

19. PROPOSED DEPTH

10,200'

20. ROTARY OR CABLE TOOLS

ROTARY

21. ELEVATIONS (Show whether DF, RT, GR, etc.)

3751.1 GR

22. APPROX. DATE WORK WILL START*

UPON APPROVAL

23. PROPOSED CASING AND CEMENTING PROGRAM

SIZE OF HOLE	SIZE OF CASING	WEIGHT PER FOOT	SETTING DEPTH	QUANTITY OF CEMENT
17-1/2"	13-3/8"	54.5#	850'	SUFFICIENT TO CIRCULATE
11"	8-5/8"	32#	4750'	SUFFICIENT TO CIRCULATE
7-7/8"	5-1/2"	17#	10,200'	TO TIE BACK TO 3800'

AFTER SETTING PRODUCTION CASING, PAY ZONE WILL BE PERFORATED
AND STIMULATED AS NECESSARY.

SEE ATTACHED FOR: SUPPLEMENTAL DRILLING DATA
BOP SKETCH
SURFACE USE AND OPERATIONS PLAN



IN ABOVE SPACE DESCRIBE PROPOSED PROGRAM: If proposal is to deepen or plug back, give data on present productive zone and proposed new productive zone. If proposal is to drill or deepen directionally, give pertinent data on subsurface locations and measured and true vertical depths. Give blowout preventer program, if any.

24.

SIGNED

Richard I. Wright
Richard I. Wright

TITLE

Division Operations Supr.

DATE

November 25, 1992

(This space for Federal or State office use)

PERMIT NO.

APPROVAL DATE

APPROVED BY

TITLE

DATE

12-14-92

CONDITIONS OF APPROVAL, IF ANY:

APPROVAL SUBJECT TO

GENERAL REQUIREMENTS AND

SPECIAL STIPULATIONS

ATTACHED

*See Instructions On Reverse Side

Title 18 U.S.C. Section 1001, makes it a crime for any person knowingly and willfully to make to any department or agency of the United States any false, fictitious or fraudulent statements or representations as to any matter within its jurisdiction.

RECEIVED

JAN 08 1993

• CDD HOBBIS OFFICE

Submit to Appropriate
District Office
State Lease - 4 copies
Fee Lease - 3 copies

State of New Mexico
Energy, Minerals and Natural Resources Department

Form C-102
Revised 1-1-89

OIL CONSERVATION DIVISION

P.O. Box 2088
Santa Fe, New Mexico 87504-2088

DISTRICT I

P.O. Box 1980, Hobbs, NM 88240

DISTRICT II

P.O. Drawer DD, Artesia, NM 88210

DISTRICT III

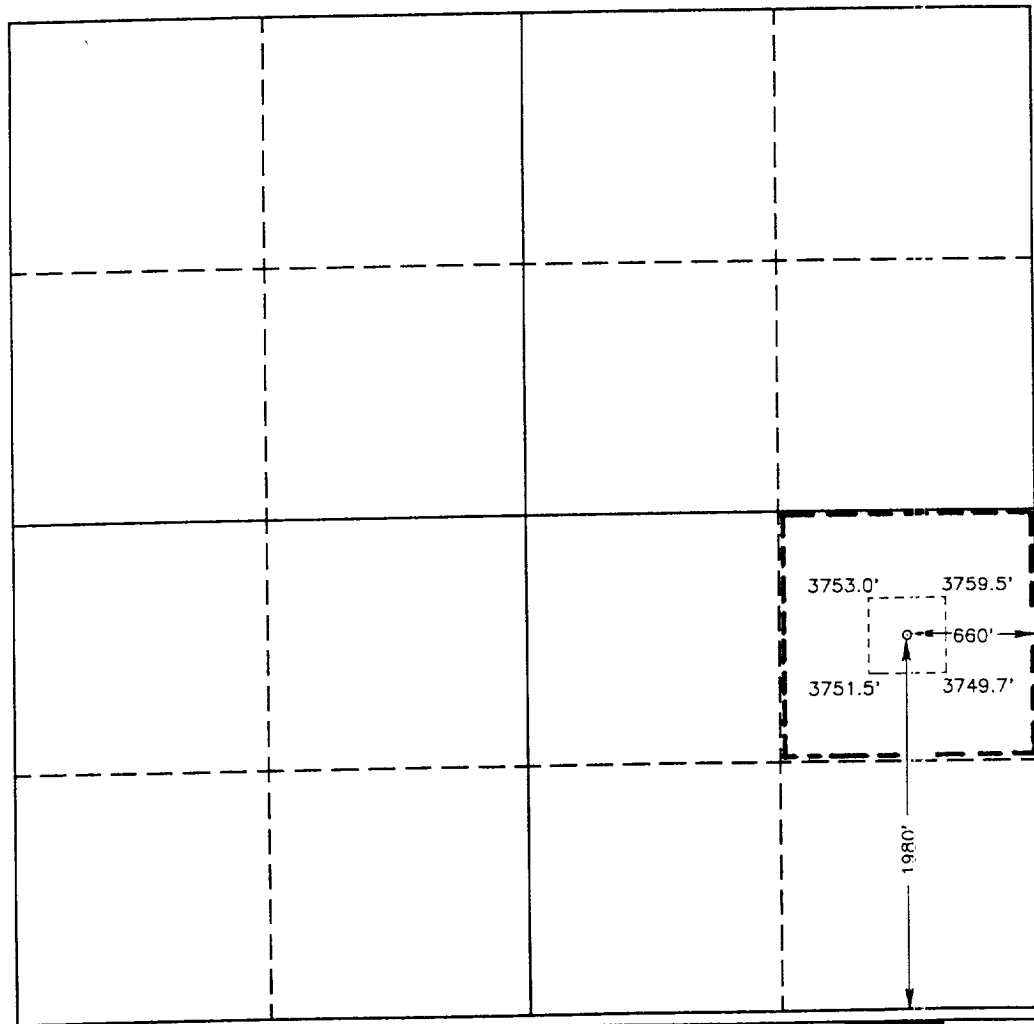
1000 Rio Brazos Rd., Aztec, NM 87410

WELL LOCATION AND ACREAGE DEDICATION PLAT

All Distances must be from the outer boundaries of the section

Operator POGO PRODUCING COMPANY			Lease COVINGTON "A" FEDERAL		Well No. 20
Unit Letter I	Section 26	Township 22 SOUTH	Range 32 EAST	NMPM	County LEA
Actual Footage Location of Well: 1980 feet from the SOUTH line and 660 feet from the EAST line					
Ground Level Elev. 3751.1'	Producing Formation BONE SPRINGS		Pool UNDES. RED TANK BONE SPRINGS		Dedicated Acreage: 40 Acres

1. Outline the acreage dedicated to the subject well by colored pencil or hachure marks on the plat below.
 2. If more than one lease is dedicated to the well, outline each and identify the ownership thereof (both as to working interest and royalty).
 3. If more than one lease of different ownership is dedicated to the well, have the interest of all owners been consolidated by communitization, unitization, force-pooling, etc.?
☐ Yes ☐ No If answer is "yes" type of consolidation _____
- If answer is "no" list of owners and tract descriptions which have actually been consolidated. (Use reverse side of this form necessary.) _____
- No allowable will be assigned to the well unit all interests have been consolidated (by communitization, unitization, forced-pooling, otherwise) or until a non-standard unit, eliminating such interest, has been approved by the Division.



OPERATOR CERTIFICATION

I hereby certify that the information contained herein is true and complete to the best of my knowledge and belief.

Signature
Richard L. Wright
Printed Name
Richard L. Wright
Position
Division Operations Supr.
Company
POGO PRODUCING COMPANY
Date
November 18, 1992

SURVEYOR CERTIFICATION

I hereby certify that the well location shown on this plat was plotted from field notes of actual surveys made by me or under my supervision, and that the same is true and correct to the best of my knowledge and belief.

Date Surveyed
SEPTEMBER 22, 1992

Signature & Seal of
Professional Surveyor

Certificate No. JOHN W. WEST, 676
RONALD J. EDSON, 3239
GARY L. JONES, 7977

RECEIVED

JAN 06 1993

CDR HOBBS CTR

SUPPLEMENTAL DRILLING DATA
POGO PRODUCING COMPANY
COVINGTON "A" FEDERAL WELL NO.20

1. SURFACE FORMATION: Quaternary.

2. ESTIMATED TOPS OF GEOLOGIC MARKERS:

Anhydrite	900'
Delaware Lime	4800'
Cherry Canyon	6100'
Brushy Canyon	7400'
Bone Springs	8800'

3. ANTICIPATED POSSIBLE HYDROCARBON BEARING ZONES:

Delaware	Oil
Bone Springs	Oil

4. PROPOSED CASING AND CEMENTING PROGRAM:

CASING SIZE	SETTING DEPTH		WEIGHT	GRADE	JOINT
	FROM	TO			
13-3/8"	0	850'	54.5#	J-55	STC
8-5/8"	0	4500'	32#	J-55	STC
"	4500'	4750'	32#	S-80	STC
5-1/2"	0	1000'	17#	N-80	LTC
"	1000'	6500'	17#	J-55	LTC
"	6500'	10,200'	17#	N-80	LTC

MINIMUM

DESIGN FACTORS: COLLAPSE 1.125 BURST 1.1 TENSION 1.7

13-3/8" casing to be cemented with 500 sacks of light cement tailed in with 200 sacks of Class "C" with 2% CaCl. Cement to circulate.

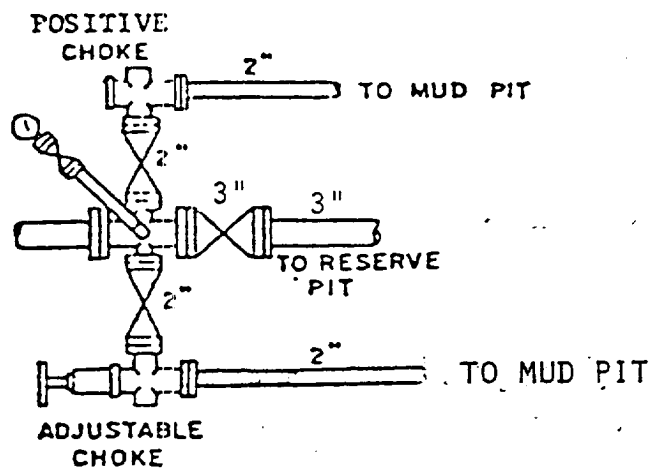
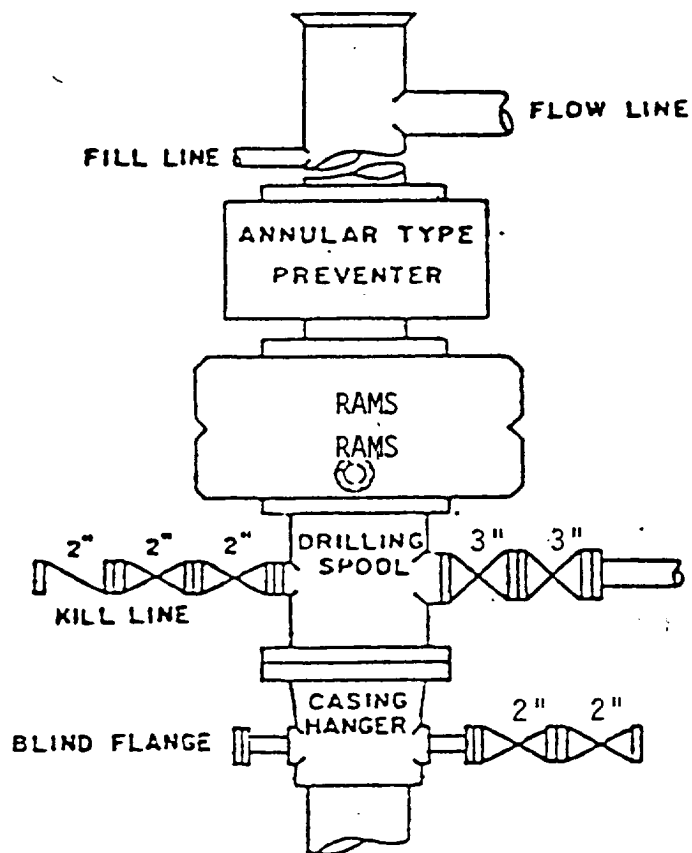
8-5/8" casing to be cemented with 1200 sacks of light cement with 10% salt tailed in with 200 sacks of premium cement with 1% CaCl. Cement to circulate.

5-1/2" production casing is to be cemented in three stages with staging

RECEIVED

JAN 08 1993

AND RECORDS SECTION



BOP STACK

3000 PSI WORKING PRESSURE

BOP ARRANGEMENT

RECEIVED

JAN 08 1993

OOD HOUSE OFFICE