

APPLICATION FOR PERMIT TO DRILL, DEEPEN, OR PLUG BACK

1a. TYPE OF WORK

DRILL ☒

DEEPEN ☐

PLUG BACK ☐

b. TYPE OF WELL

OIL
WELL ☐

GAS
WELL ☐

OTHER

SWD

SINGLE
ZONE ☒

MULTIPLE
ZONE ☐

2. NAME OF OPERATOR

Pogo Producing Company

3. ADDRESS OF OPERATOR

P.O. Box 10340, Midland, Texas 79702

4. LOCATION OF WELL (Report location clearly and in accordance with any State requirements.)*

At surface

1400' FSL & 2310 FEL of Section 28

At proposed prod. zone

14. DISTANCE IN MILES AND DIRECTION FROM NEAREST TOWN OR POST OFFICE*

30 air miles west of Eunice, New Mexico

15. DISTANCE FROM PROPOSED*

LOCATION TO NEAREST
PROPERTY OR LEASE LINE, FT.
(Also to nearest drlg. unit line, if any)

330'

16. NO. OF ACRES IN LEASE

320 acres

17. NO. OF ACRES ASSIGNED
TO THIS WELL

40

~~NONE~~

18. DISTANCE FROM PROPOSED LOCATION*

TO NEAREST WELL, DRILLING, COMPLETED,
OR APPLIED FOR, ON THIS LEASE, FT.

1070'

19. PROPOSED DEPTH

6700'

20. ROTARY OR CABLE TOOLS

Rotary

21. ELEVATIONS (Show whether DF, RT, GR, etc.)

3580.8' GR

22. APPROX. DATE WORK WILL START*

Upon Arrival

23.

PROPOSED CASING AND CEMENT

CARLSBAD CONTROLLED WATER BASIN

SIZE OF HOLE	SIZE OF CASING	WEIGHT PER FOOT	SETTING DEPTH	QUANTITY OF CEMENT
17 1/2"	13 3/8"	54.5#	800	Sufficient to circulate
11"	8 5/8"	24 & 32#	4600	Sufficient to circulate
7 7/8"	5 1/2"	17#	6700	Sufficient to circulate

After setting production casing, injection zone will be perforated
and stimulated as necessary.

See attached for: Supplemental Drilling Data
BOP Sketch
Surface Use Plan

Location is
Subject to
Like Approval
by State

APPROVAL SUBJECT TO
GENERAL REQUIREMENTS AND
SPECIAL STIPULATIONS
ATTACHED

RECEIVED
MAY 25 12 22 PM '93

IN ABOVE SPACE DESCRIBE PROPOSED PROGRAM: If proposal is to deepen or plug back, give data on present productive zone and proposed new productive zone. If proposal is to drill or deepen directionally, give pertinent data on subsurface locations and measured and true vertical depths. Give blowout preventer program, if any.

24.

SIGNED

James M. C. Ritchie, Jr.

TITLE

Agent

DATE

May 10, 1993

(This space for Federal or State office use)

PERMIT NO.

APPROVAL DATE

APPROVED BY

Ron Dunton

TITLE

AREA MANAGER

DATE

AUG 10 1993

CONDITIONS OF APPROVAL, IF ANY:

SWD 528

*See Instructions On Reverse Side

Submit to Appropriate
District Office
State Lease - 4 copies
Fee Lease - 3 copies

State of New Mexico
Energy, Minerals and Natural Resources Department

Form C-102
Revised 1-1-89

OIL CONSERVATION DIVISION

P.O. Box 2088
Santa Fe, New Mexico 87504-2088

DISTRICT I

P.O. Box 1980, Hobbs, NM 88240

DISTRICT II

P.O. Drawer DD, Artesia, NM 88210

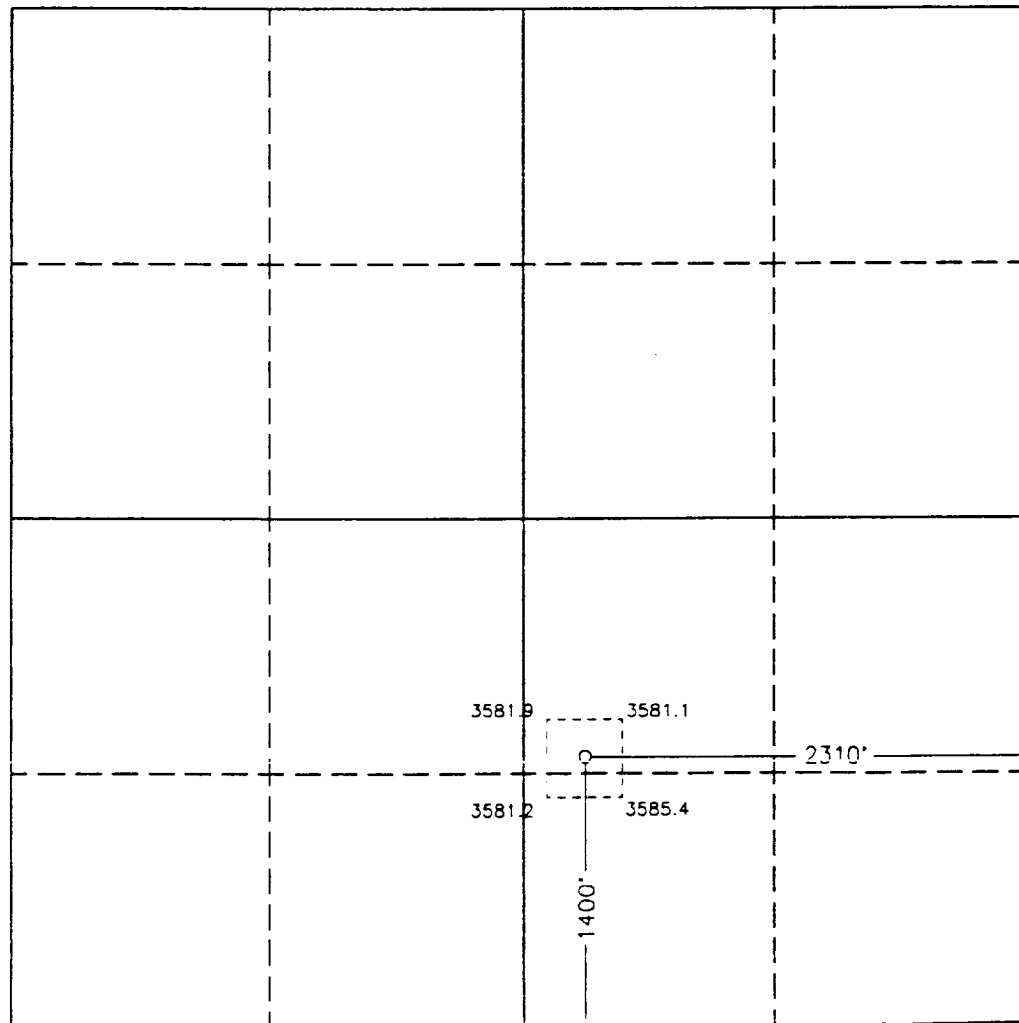
DISTRICT III

1000 Rio Brazos Rd., Aztec, NM 87410

WELL LOCATION AND ACREAGE DEDICATION PLAT

All Distances must be from the outer boundaries of the section

Operator POGO PRODUCING COMPANY		Lease RED TANK 28		Well No. 9	
Unit Letter J	Section 28	Township 22 SOUTH	Range 32 EAST	County LEA	
Actual Footage Location of Well: 1400 feet from the SOUTH line and 2310 feet from the EAST line					
Ground Level Elev. 3580.8	Producing Formation Disposal Well	Pool Undesignated E. Livingston Ridge (Del)		Dedicated Acreage: 40 none Acres	
<p>1. Outline the acreage dedicated to the subject well by colored pencil or hachure marks on the plat below.</p> <p>2. If more than one lease is dedicated to the well, outline each and identify the ownership thereof (both as to working interest and royalty).</p> <p>3. If more than one lease of different ownership is dedicated to the well, have the interest of all owners been consolidated by communitization, unitization, force-pooling, etc.?</p> <p><input type="checkbox"/> Yes <input type="checkbox"/> No If answer is "yes" type of consolidation _____</p> <p>If answer is "no" list of owners and tract descriptions which have actually been consolidated. (Use reverse side of this form necessary. _____)</p> <p>No allowable will be assigned to the well unit all interests have been consolidated (by communitization, unitization, forced-pooling, otherwise) or until a non-standard unit, eliminating such interest, has been approved by the Division.</p>					



OPERATOR CERTIFICATION

I hereby certify the the information contained herein is true and complete to the best of my knowledge and belief.

Signature

Printed Name

Richard L. Wright

Position

Dist. Dir. & Prod. Supt.

Company

Pogo Producing Company

Date

May 10, 1993

SURVEYOR CERTIFICATION

I hereby certify that the well location shown on this plat was plotted from field notes of actual surveys made by me or under my supervision, and that the same is true and correct to the best of my knowledge and belief.

Date Surveyed

MAY 3, 1993

Signature & Seal of Professional Surveyor

GARY L. JONES
NEW MEXICO
7977
Professional Surveyor
Certificate No. 7977
JOHN W. ST. 878
RONALD L. EBBSON 3239
GARY L. JONES 7977

93-11-0749

SUPPLEMENTAL DRILLING DATA

POGO PRODUCING COMPANY RED TANK FEDERAL WELL NO. 9

1. SURFACE FORMATION: Quaternary.

2. ESTIMATED TOPS OF GEOLOGIC MARKERS:

Rustler Anhydrite	800'
Delaware Lime	4600'
Cherry Canyon	5900'

3. ANTICIPATED POSSIBLE HYDROCARBON BEARING ZONE:

None

4. PROPOSED CASING AND CEMENTING PROGRAM:

<u>CASING SIZE</u>	<u>SETTING DEPTH</u>		<u>WEIGHT</u>	<u>GRADE</u>	<u>JOINT</u>
	<u>FROM</u>	<u>TO</u>			
13 3/8"	0	800'	54.5#	J-55	STC
8 5/8"	0	1000'	32#	J-55	STC
"	1000	2200'	24#	J-55	STC
"	2200	4600'	32#	J-55	STC
5 1/2"	0	1000'	17#	N-80	LTC
"	1000	6700'	17#	J-55	STC

MINIMUM DESIGN FACTORS: Collapse 1.125 Burst 1.1 Tension 1.7

13 3/8" casing to be cemented with 500 sacks of Light followed by 200 sacks of Class "C" with 2% CaCl. Cement to circulate.

8 5/8" casing to be cemented with 1200 sacks of Light cement with 10% salt followed by 200 sacks of Class "C" cement with 1% CaCl. Cement to circulate.

5 1/2" casing to be cemented with approximately 500 sacks of Light cement followed by 700 sacks of Class "H". If need for a stage tool is indicated, it will be positioned to best suit hole conditions at time casing is run. Cement to circulate.

Cement may have lost circulation material or other additives depending on hole conditions at the time casing is run.

5. PRESSURE CONTROL EQUIPMENT:

Blowout prevention equipment, while drilling the 11" hole, will be either a 3000 psi working pressure double ram type preventer or a 3000 psi working pressure annular type preventer.

Blowout prevention equipment, while drilling below the 8 5/8" casing seat, will be a 3000 psi working pressure BOP Stack. A BOP sketch is attached.

6. CIRCULATING MEDIUM:

Surface to 800 feet: Fresh water spud mud. Viscosity 30 to 36 as required for hole cleaning.

800 feet to 6700 feet Brine water conditioned as necessary for control of viscosity. Weight 9.8 to 10.0. PH 9 to 10. Viscosity 32 to 36.

7. AUXILIARY EQUIPMENT: None needed.

8. TESTING, LOGGING, AND CORING PROGRAMS:

It is planned that electric logs will include GR-CNL-Density logs.

9. ABNORMAL PRESSURES, TEMPERATURES, OR HYDROGEN SULFIDE GAS:

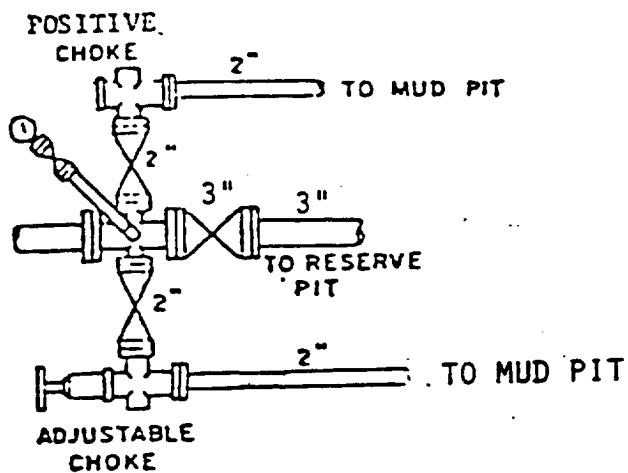
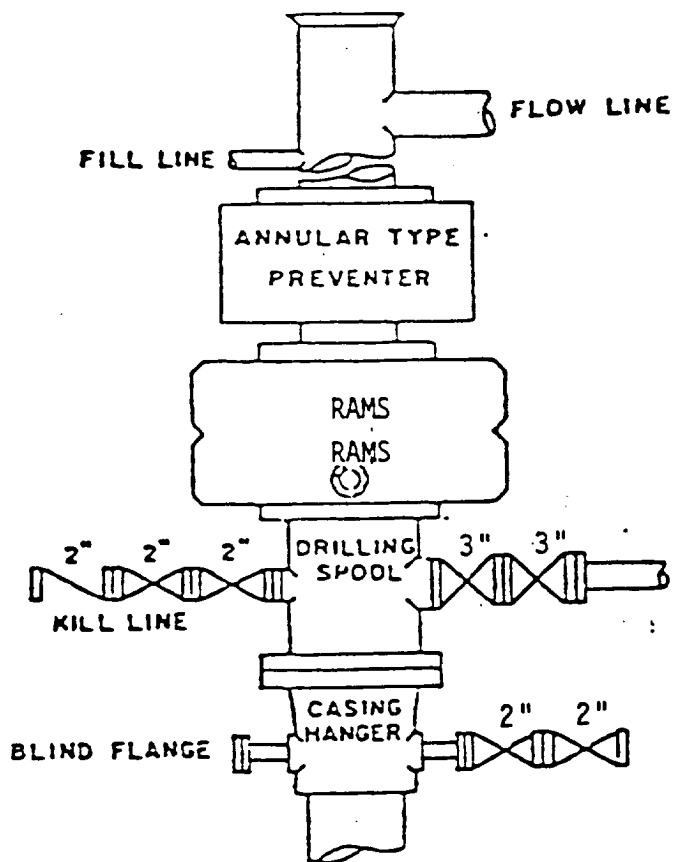
None anticipated.

Expected bottom hole pressure is approximately 3350 psi.

Expected bottom hole temperature is approximately 120 degrees Fahr.

10. ANTICIPATED STARTING DATE:

It is planned that operations will commence upon approval of this application, with drilling and completion operations lasting about 30-35 days.



BOP STACK

3000 PSI WORKING PRESSURE

BOP ARRANGEMENT