

Submit to Appropriate
District Office
State Lease - 4 copies
Fee Lease - 3 copies

State of New Mexico
Energy, Minerals and Natural Resources Department

Form C-102
Revised 1-1-89

OIL CONSERVATION DIVISION

P.O. Box 2088
Santa Fe, New Mexico 87504-2088

DISTRICT I
P.O. Box 1980, Hobbs, NM 88240

DISTRICT II
P.O. Drawer DD, Artesia, NM 88210

DISTRICT III
1000 Rio Brazos Rd., Aztec, NM 87410

WELL LOCATION AND ACREAGE DEDICATION PLAT

All Distances must be from the outer boundaries of the section

Operator MITCHELL ENERGY Corporation			Lease ANASAZI 4 FEDERAL		Well No. #6
Unit Letter H	Section 4	Township 20S.	Range 33E.	County NMJM	LEA
Actual Footage Location of Well: 2150 feet from the NORTH line and 660 feet from the EAST line					
Ground level Elev. 3562	Producing Formation Yates/ Seven Rivers		Pool West Teas	Dedicated Acreage: 40 Acres	

1. Plotting the well location in this subject well by colored pencil or hatchure marks on the plat below.

2. If more than one lease is dedicated to the well, outline each and identify the ownership thereof (both as to working interest and royalty).

3. If more than one lease of different ownership is dedicated to the well, have the interest of all owners been consolidated by communitization, unitization, force-pooling, etc.?

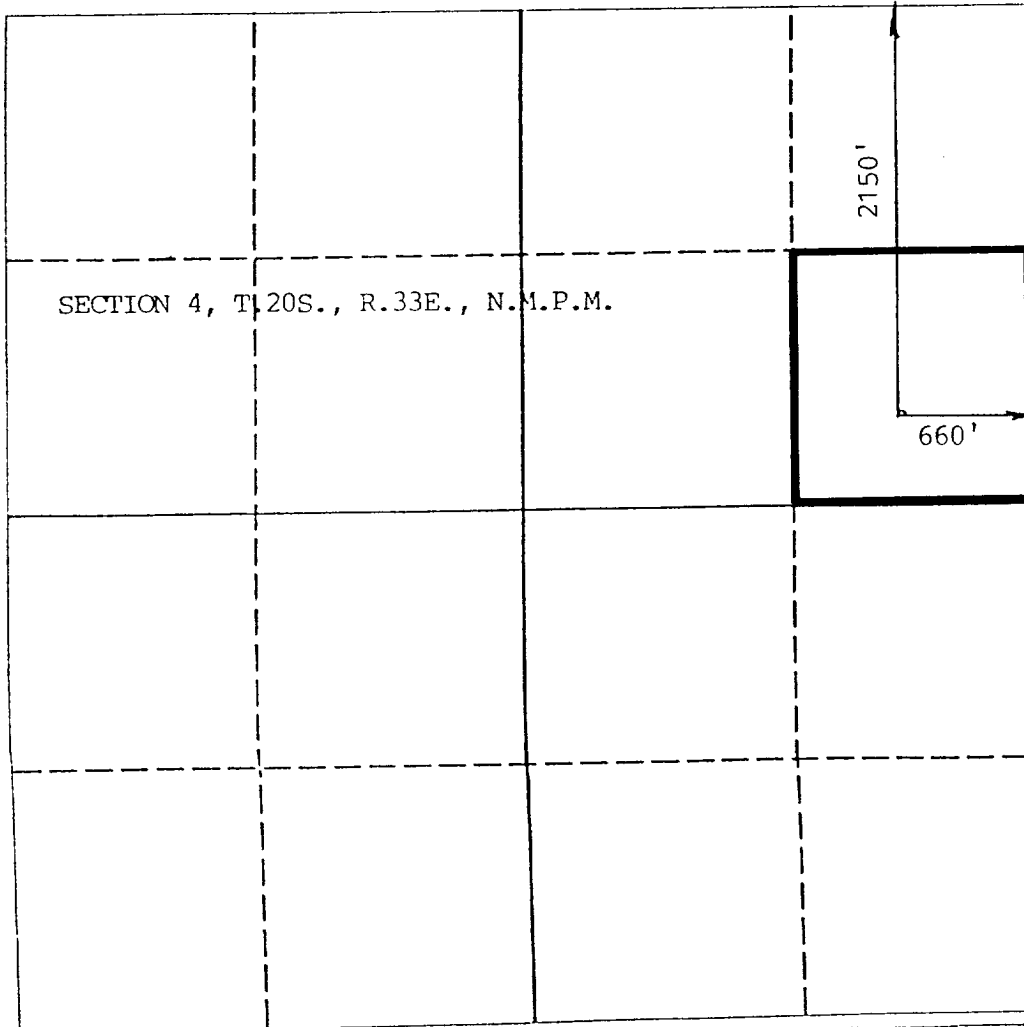
☐ Yes

☐ No

If answer is "yes" type of consolidation

If answer is "no" list the owners and tract descriptions which have actually been consolidated. (Use reverse side of this form if necessary.)

No allowable will be assigned to the well until all interests have been consolidated (by communitization, unitization, forced-pooling, or otherwise) or until a non-standard unit, eliminating such interest, has been approved by the Division.



OPERATOR CERTIFICATION

I hereby certify that the information contained herein is true and complete to the best of my knowledge and belief.

Signature

George Mullen

Printed Name

George Mullen

Position

Reg. Affairs Specialist

Company

Mitchell Energy Corp.

Date

July 6, 1994

SURVEYOR CERTIFICATION

I hereby certify that the well location shown on this plat was plotted from field notes of actual surveys made by me or under my supervision, and that the same is true and correct to the best of my knowledge and belief.

Date Surveyed

5/28/93

Signature & Seal of
Professional Surveyor

6290

6290

6290

6290

6290

6290

6290

6290

6290

6290

RECEIVED

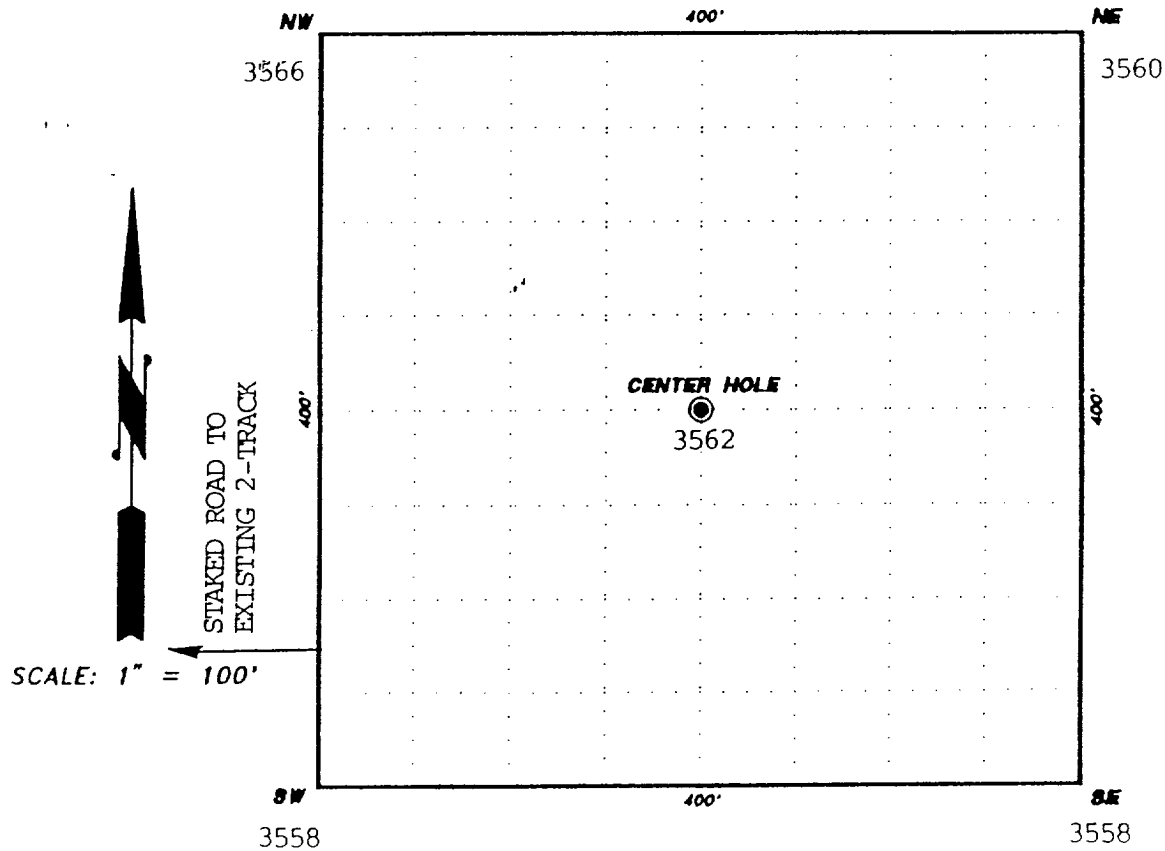
JUL 11 1991

OLYMPIA
OFFICE

GRID ELEVATIONS

JOHN D. JAGUESS & ASSOCIATES

CONSULTING ENGINEERS



WELL INFORMATION

ANASAZI 4 FEDERAL #6
2150 FNL, 660 FEL
SECTION 4, T.20S., R.33E., N.M.P.M.