

# OIL CONSERVATION DIVISION

P.O. Box 2088  
Santa Fe, New Mexico 87504-2088

## DISTRICT I

P.O. Box 1980, Hobbs, NM 88240

## DISTRICT II

P.O. Drawer DD, Artesia, NM 88210

## DISTRICT III

1000 Rio Brazos Rd., Aztec, NM 87410

## WELL LOCATION AND ACREAGE DEDICATION PLAT

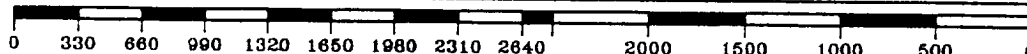
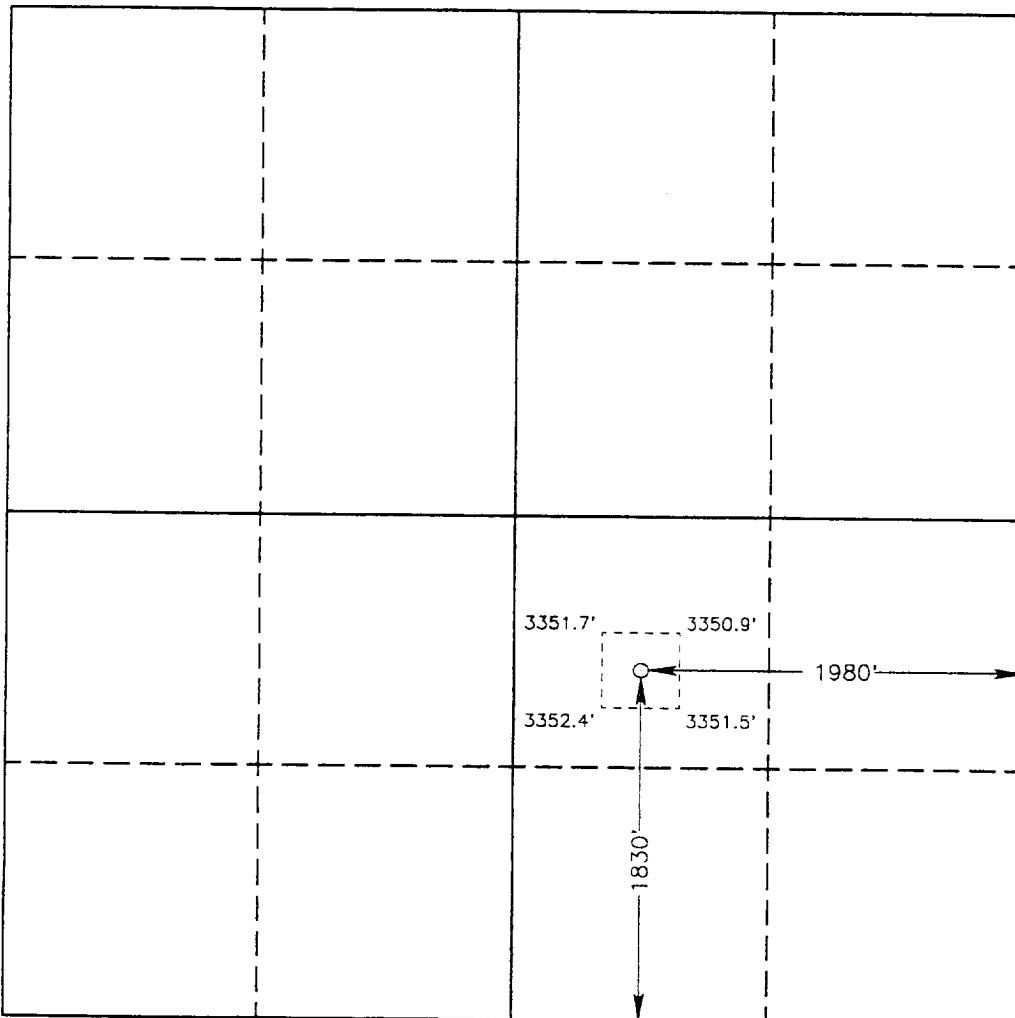
All Distances must be from the outer boundaries of the section

Operator ENRON OIL AND GAS COMPANY			Lease VACA "14" FEDERAL		Well No. 5
Unit Letter J	Section 14	Township 25 SOUTH	Range 33 EAST	NMPM	County LEA
Actual Footage Location of Well: 1830 feet from the SOUTH line and 1980 feet from the EAST line					
Ground Level Elev. 3351.1'	Producing Formation Bone Spring	Pool Red Hills	Dedicated Acreage: 40 Acres		

- Outline the acreage dedicated to the subject well by colored pencil or hachure marks on the plat below.
- If more than one lease is dedicated to the well, outline each and identify the ownership thereof (both as to working interest and royalty).
- If more than one lease of different ownership is dedicated to the well, have the interest of all owners been consolidated by communitization, unitization, force-pooling, etc.?  
☐ Yes ☐ No If answer is "yes" type of consolidation \_\_\_\_\_

If answer is "no" list of owners and tract descriptions which have actually been consolidated. (Use reverse side of this form necessary.)

No allowable will be assigned to the well unit all interests have been consolidated (by communitization, unitization, forced-pooling, otherwise) or until a non-standard unit, eliminating such interest, has been approved by the Division.



### OPERATOR CERTIFICATION

I hereby certify the the information contained herein is true and complete to the best of my knowledge and belief.

Signature  
*Betty Gildon*  
Printed Name  
Betty Gildon  
Position  
Regulatory Analyst  
Company  
Enron Oil & Gas Company  
Date  
8/18/93

### SURVEYOR CERTIFICATION

I hereby certify that the well location shown on this plat was plotted from field notes of actual surveys made by me or under my supervision, and that the same is true and correct to the best of my knowledge and belief.

Date Surveyed  
JULY 14, 1993

Signature & Seal of  
Professional Surveyor

*Gary L. Jones*  
GARY L. JONES  
NEW MEXICO  
2977  
Certificate No. JOHN W. WEST 176  
RONALD J. EIDSON 239  
GARY L. JONES 2977  
93