

OIL CONSERVATION DIVISION

P.O. Box 2088

Santa Fe, New Mexico 87504-2088

DISTRICT I

P.O. Box 1980, Hobbs, NM 88240

DISTRICT II

P.O. Drawer DD, Artesia, NM 88210

DISTRICT III

1000 Elv Brazos Rd., Artesia, NM 87410

WELL LOCATION AND ACREAGE DEDICATION PLAT

All Distances must be from the outer boundaries of the section

Operator DUSTY MAC RESOURCES, INC			Lease MADERA FEDERAL 24		Well No. 1
Unit Letter N	Section 24	Township 26 SOUTH	Range 34 EAST	NMPM	County LEA

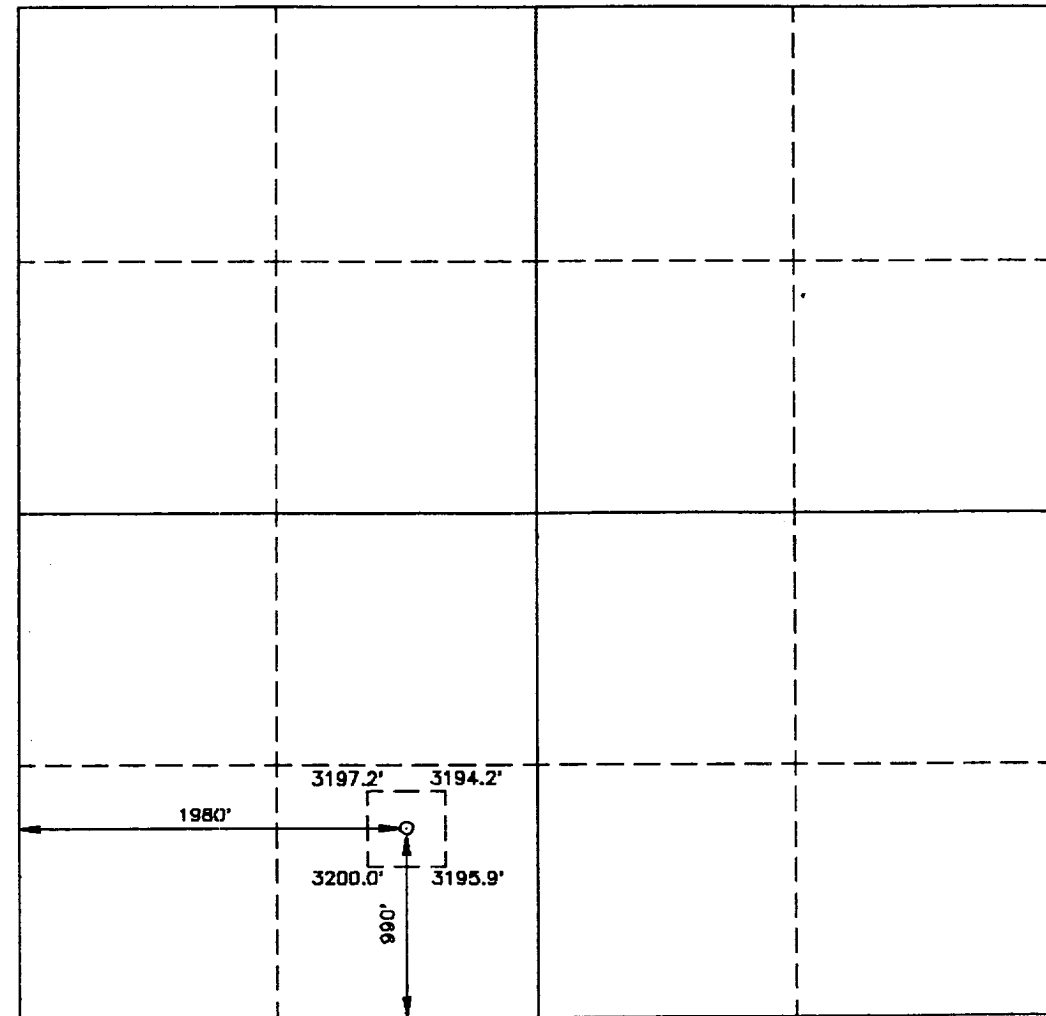
Actual Footage Location of Well:

990 feet from the SOUTH line and		1980 feet from the WEST line	
Ground Level Elev. 3195'	Producing Formation Atoka	Pool Southwest Jabalina-Atoka Gas Pool	Dedicated Acreage: 320 Acres

- Outline the acreage dedicated to the subject well by colored pencil or hatchure marks on the plat below.
- If more than one lease is dedicated to the well, outline each and identify the ownership thereof (both as to working interest and royalty).
- If more than one lease of different ownership is dedicated to the well, have the interest of all owners been consolidated by communitization, unitization, force-pooling, etc.?
☐ Yes ☐ No If answer is "yes" type of consolidation _____

If answer is "no" list of owners and tract descriptions which have actually been consolidated. (Use reverse side of this form necessary.)

No allowable will be assigned to the well unit all interests have been consolidated (by communitization, unitization, forced-pooling, otherwise) or until a non-standard unit, eliminating such interest, has been approved by the Division.



OPERATOR CERTIFICATION

I hereby certify the the information contained herein is true and complete to the best of my knowledge and belief.

James P. (Phil) Stinson
Signature

James P. (Phil) Stinson

Printed Name

Agent for Dusty Mac Resources

Position

Dusty Mac Resources Inc.

Company

2-9-94

Date

SURVEYOR CERTIFICATION

I hereby certify that the well location shown on this plat was plotted from field notes of actual surveys made by me or under my supervision, and that the same is true and correct to the best of my knowledge and belief.

Date Surveyed L. JONES
JANUARY 25, 1994

Signature & Seal of
Professional Surveyor
7977

Certificate No. JOHN W. WEST, 878

RONALD J. EDISON, 3239

GARY L. JONES, 7977

94-11-0159B