

UNITED STATES
DEPARTMENT OF THE INTERIOR
BUREAU OF LAND MANAGEMENT

APPLICATION FOR PERMIT TO DRILL OR DEEPEN

1a. TYPE OF WORK

DRILL ☒

DEEPEN ☐

b. TYPE OF WELL

OIL WELL ☒

GAS WELL ☐

OTHER

SINGLE ZONE ☒

MULTIPLE ZONE ☐

2. NAME OF OPERATOR

POGO PRODUCING COMPANY

(915-682-2822)

3. ADDRESS AND TELEPHONE NO.

P. O. BOX 10340, MIDLAND, TEXAS 79702

4. LOCATION OF WELL (Report location clearly and in accordance with any State requirements.)*
At surface

1980' FNL AND 2310' FWL OF SECTION 34

At proposed prod. zone

14. DISTANCE IN MILES AND DIRECTION FROM NEAREST TOWN OR POST OFFICE*

30 AIR MILES WEST OF EUNICE, NEW MEXICO

15. DISTANCE FROM PROPOSED*
LOCATION TO NEAREST
PROPERTY OR LEASE LINE, FT.
(Also to nearest drlg. unit line, if any)

1980'

16. NO. OF ACRES IN LEASE

1160

17. NO. OF ACRES ASSIGNED
TO THIS WELL

40

18. DISTANCE FROM PROPOSED LOCATION*
TO NEAREST WELL, DRILLING, COMPLETED,
OR APPLIED FOR, ON THIS LEASE, FT.

990'

19. PROPOSED DEPTH

9000'

20. ROTARY OR CABLE TOOLS

ROTARY

21. ELEVATIONS (Show whether DF, RT, GR, etc.)

3666.2 GR

22. APPROX. DATE WORK WILL START*

UPON APPROVAL

23. PROPOSED CASING AND CEMENTING PROGRAM

Carlsbad Controlled Water Basin

SIZE OF HOLE	GRADE SIZE OF CASING	WEIGHT PER FOOT	SETTING DEPTH	QUANTITY OF CEMENT
17-1/2"	13-3/8"	54.5#	800'	SUFFICIENT TO CIRCULATE
11"	8-5/8"	32#	4500'	SUFFICIENT TO CIRCULATE
7-7/8"	5-1/2"	17#	9000'	TO TIE BACK 200' INTO 8-5/8"

AFTER SETTING PRODUCTION CASING, PAY ZONE WILL BE PERFORATED
AND STIMULATED AS NECESSARY.

SEE ATTACHED FOR: SUPPLEMENTAL DRILLING DATA
BOP SKETCH
SURFACE USE AND OPERATIONS PLAN
HYDROGEN SULFIDE DRILLING OPERATIONS PLAN

THIS IS A RESUBMISSION OF AN APPLICATION FOR PERMIT
TO DRILL THAT HAS EXPIRED.

THERE IS NO CHANGE OF WELL LOCATION OR PROPOSED TOTAL DEPTH.

IN ABOVE SPACE DESCRIBE PROPOSED PROGRAM: If proposal is to deepen, give data on present productive zone and proposed new productive zone. If proposal is to drill or deepen directionally, give pertinent data on subsurface locations and measured and true vertical depths. Give blowout preventer program, if any.

24.

SIGNED

Richard L. Wright
Richard L. Wright

TITLE

Division Operations Mgr.

DATE

May 25, 1995

(This space for Federal or State office use)

PERMIT NO.

APPROVAL DATE

Application approval does not warrant or certify that the applicant holds legal or equitable title to those rights in the subject lease which would entitle the applicant to conduct operations thereon.
CONDITIONS OF APPROVAL, IF ANY:

APPROVED BY

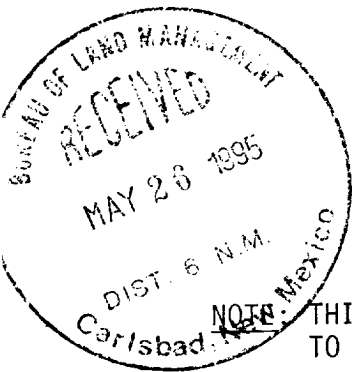
TITLE

ASSISTANT AREA MANAGER

DATE

7-3-95

*See Instructions On Reverse Side



OP. NO. 17891
PROPERTY NO. 9343
POOL CODE 51683
EFF. DATE 7/5/95
API NO. 30-025-32494

RECEIVED
JUL 05 1965
U CD HOBBS
OFFICE

Submit to Appropriate
District Office
State Lease - 4 copies
Fee Lease - 3 copies

State of New Mexico
Energy, Minerals and Natural Resources Department

Form C-102
Revised 1-1-89

OIL CONSERVATION DIVISION

P.O. Box 2088
Santa Fe, New Mexico 87504-2088

DISTRICT I
P.O. Box 1980, Hobbs, NM 88240

DISTRICT II
P.O. Drawer DD, Artesia, NM 88210

DISTRICT III
1000 Rio Brazos Rd., Aztec, NM 87410

WELL LOCATION AND ACREAGE DEDICATION PLAT

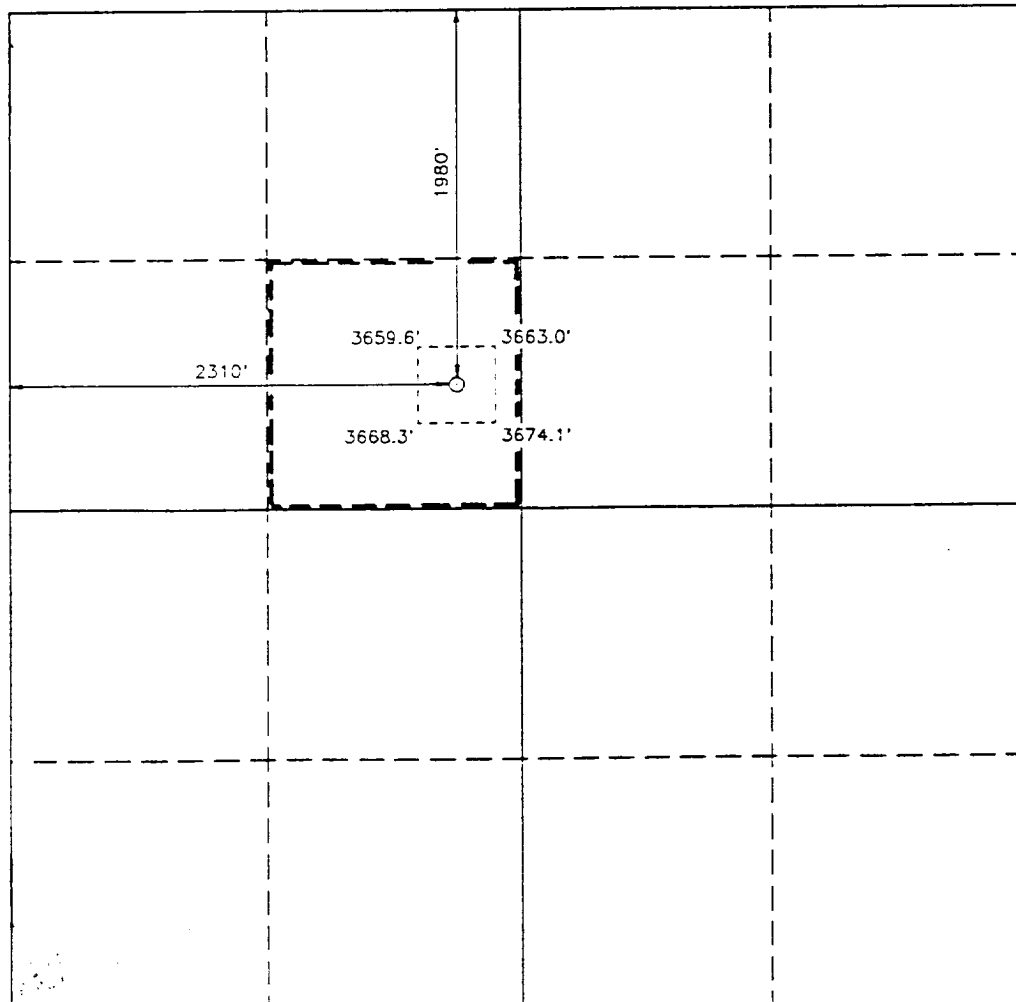
All Distances must be from the outer boundaries of the section

Operator POGO PRODUCING COMPANY			Lease RED TANK 34 FEDERAL		Well No. 12
Unit Letter F	Section 34	Township 22 SOUTH	Range 32 EAST NMPM	County LEA	
Actual Footage Location of Well: 1980 feet from the NORTH line and 2310 feet from the WEST line					
Ground Level Elev. 3666.2'	Producing Formation DELAWARE		Pool WEST RED TANK DELAWARE		Dedicated Acreage: 40 Acres

- Outline the acreage dedicated to the subject well by colored pencil or hachure marks on the plat below.
- If more than one lease is dedicated to the well, outline each and identify the ownership thereof (both as to working interest and royalty).
- If more than one lease of different ownership is dedicated to the well, have the interest of all owners been consolidated by communitization, unitization, force-pooling, etc.?
☐ Yes ☐ No If answer is "yes" type of consolidation _____

If answer is "no" list of owners and tract descriptions which have actually been consolidated. (Use reverse side of this form necessary.)

No allowable will be assigned to the well unit all interests have been consolidated (by communitization, unitization, forced-pooling, otherwise) or until a non-standard unit, eliminating such interest, has been approved by the Division.



OPERATOR CERTIFICATION

I hereby certify the the information
contained herein is true and complete to the
best of my knowledge and belief.

Signature

Printed Name

Richard L. Wright

Position

Division Operations Mgr.

Company

POGO PRODUCING COMPANY

Date

March 28, 1994

SURVEYOR CERTIFICATION

I hereby certify that the well location shown
on this plat was plotted from field notes of
actual surveys made by me or under my
supervision, and that the same is true and
correct to the best of my knowledge and
belief.

Date Surveyed

OCTOBER 6, 1993

Signature & Seal of
Professional Surveyor

John W. West
Certificate No. JOHN W. WEST 676
RONALD J. REDSON 3239
GARY L. JONES 7977

0 330 660 990 1320 1650 1980 2310 2640 2000 1500 1000 500 0

RECEIVED

JUL 05 1964

UCC HONOLULU
OFFICE

SUPPLEMENTAL DRILLING DATA

POGO PRODUCING COMPANY

RED TANK 34 FEDERAL WELL NO.12

1. SURFACE FORMATION: Quaternary.

2. ESTIMATED TOPS OF GEOLOGIC MARKERS:

Anhydrite	800'
Delaware Lime	4700'
Cherry Canyon	6100'
Brushy Canyon	7400'
Bone Springs	8800'

3. ANTICIPATED POSSIBLE HYDROCARBON BEARING ZONES:

Delaware	Oil
----------	-----

4. PROPOSED CASING AND CEMENTING PROGRAM:

CASING SIZE	SETTING DEPTH		WEIGHT	GRADE	JOINT
	FROM	TO			
13-3/8"	0	800'	54.5#	J-55	STC
8-5/8"	0	4300'	32#	J-55	STC
"	4300'	4500'	32#	S-80	STC
5-1/2"	0	1000'	17#	N-80	LTC
"	1000'	7000'	17#	J-55	LTC
"	7000'	9000'	17#	N-80	LTC

MINIMUM

DESIGN FACTORS: COLLAPSE 1.1 BURST 1.1 TENSION 1.2

13-3/8" casing to be cemented with 500 sacks of light cement tailed in with 200 sacks of Class "C" with 2% CaCl. Cement to circulate.

8-5/8" casing to be cemented with 1200 sacks of light cement with 10% salt tailed in with 200 sacks of premium cement with 1% CaCl. Cement to circulate.

5-1/2" production casing is to be cemented with approximately 500 sacks

RECEIVED

JUL 03 1985
JUL 03 1985
U.S. CUSTOMS
OFFICE

of light cement followed by 400 sacks of premium cement. Cement to tie back to 3600 feet.

If, during drilling operations, need for stage cementing of casing is indicated, staging tool(s) will be run and positioned to best suit hole conditions at time casing is run.

Cement volumes may be adjusted and cement may have lost circulation and/or other additives depending on hole conditions at the time casing is run.

5. PRESSURE CONTROL EQUIPMENT:

Blowout prevention equipment, while drilling the 11" hole, will be either a 3000 psi working pressure double ram type preventer or a 3000 psi working pressure annular type preventer.

Blow out prevention equipment, while drilling below the 8-5/8" casing seat, will be a 3000 psi working pressure BOP stack. A BOP sketch is attached.

6. CIRCULATING MEDIUM:

Surface to 800 feet: Fresh water base fluid with gel and paper sweeps for hole cleaning.
Mud wgt 8.4 ppg - 8.6 ppg
Viscosity 28 - 32 seconds per quart.

800 feet to 4500 feet: Brine water base fluid with salt gel and paper sweeps for hole cleaning.
Mud wgt 10.0 ppg - 10.2 ppg
Viscosity 28 - 32 seconds per quart.

4500 feet to T.D.: Fresh water base fluid with gel and paper sweeps for hole cleaning.
Mud wgt 8.4 ppg - 8.6 ppg
Viscosity 28 - 32 seconds per quart.

7. AUXILIARY EQUIPMENT:

A mud logging trailer will be in use while drilling below the interdediate casing.

8. TESTING, LOGGING, AND CORING PROGRAM:

Drill stem tests will be made when well data indicate a test is warranted.

It is planned that electric logs will include GR-CNL-Density logs and GR-DLL logs.

No coring is planned.

9. ABNORMAL PRESSURES, TEMPERATURES, OR HYDROGEN SULFIDE GAS:

No abnormal pressures or temperatures are expected.

Expected bottom hole pressure is about 3600 psi.

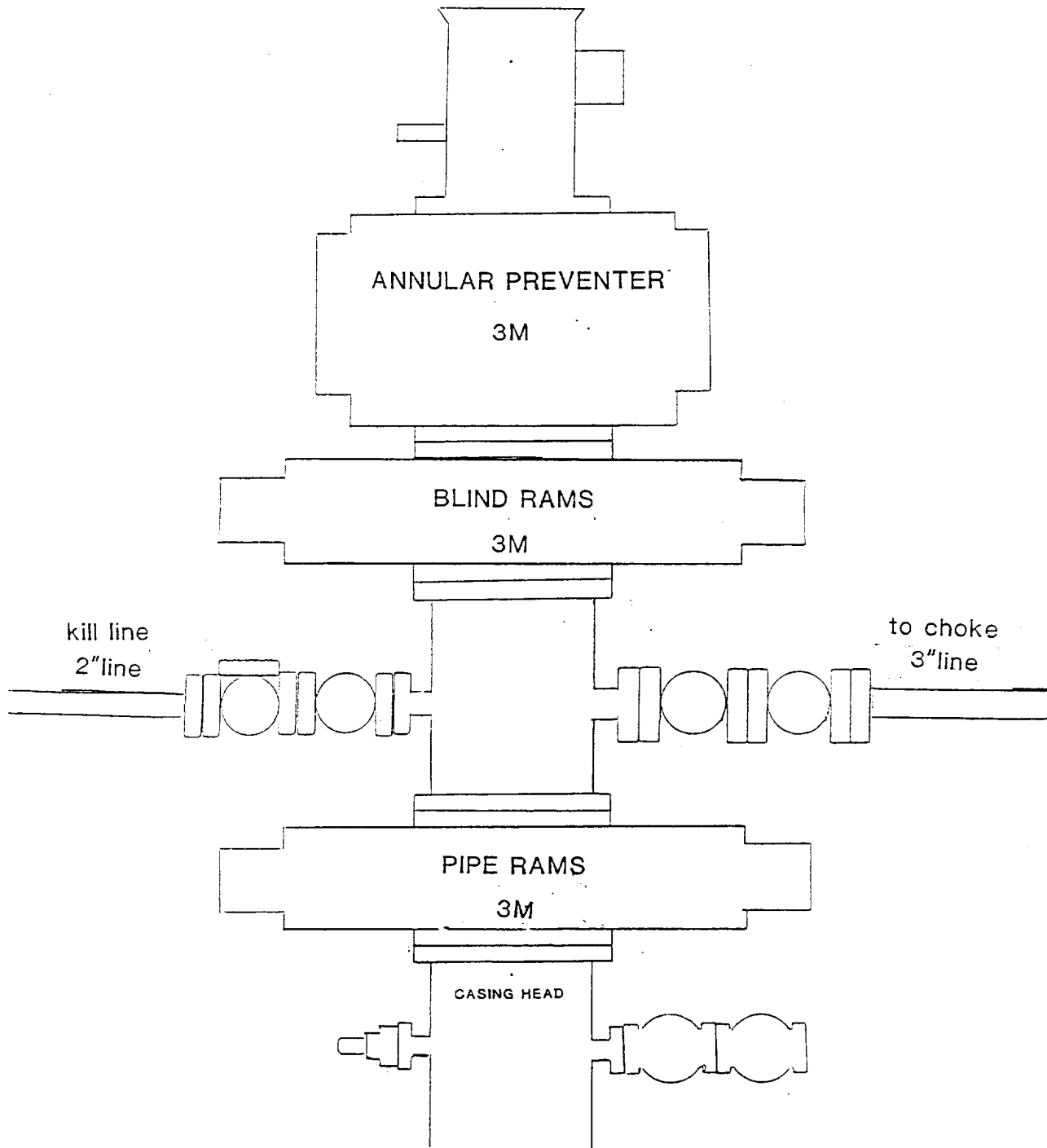
Expected bottom hole temperature is about 125 degrees Fahr.

No hydrogen sulfide gas is expected. The production stream of Pogo Producing Company's wells in this area have been tested specifically for hydrogen sulfide gas and test results were negative. However, since it is possible that low-volume hydrogen sulfide gas may be present in permeable water zones of the Castile formation, drilling operations below the surface casing will be in accordance with the attached "HYDROGEN SULFIDE DRILLING OPERATIONS PLAN" until intermediate casing is set and cemented and this possible source of hydrogen sulfide gas is cased off.

10. ANTICIPATED STARTING DATE:

It is planned that operations will commence upon approval of this application, with drilling and completion operations lasting about 30 days.

POGO PRODUCING COMPANY
RED TANK 34 FEDERAL WELL NO.12



RECEIVED
JUL 05 1906
U. S. HOUSE
OFFICE