

District I  
PO Box 1980, Hobbs, NM 88241-1980  
District II  
PO Drawer DD, Artesia, NM 88211-0719  
District III  
1000 Rio Brazos Rd., Aztec, NM 87410  
District IV  
PO Box 2088, Santa Fe, NM 87504-2088

State of New Mexico  
Energy, Minerals & Natural Resources Department

OIL CONSERVATION DIVISION  
PO Box 2088  
Santa Fe, NM 87504-2088

Form C-101  
Revised February 21, 1994  
Instructions on back  
Submit to Appropriate District Office  
State Lease - 6 Copies  
Fee Lease - 5 Copies

☐ AMENDED REPORT

APPLICATION FOR PERMIT TO DRILL, RE-ENTER, DEEPEN, PLUGBACK, OR ADD A ZONE

Operator Name and Address.  CONOCO INC. 10 DESTA DRIVE STE 100W MIDLAND, TEXAS 79705		1 OGRID Number  005073
		2 API Number  30-025-32524
3 Property Code  13396	4 Property Name  Hardy 36 State	
		5 Well No.  6

7 Surface Location

UL or lot no.	Section	Township	Range	Lot Ida	Feet from the	North/South line	Feet from the	East/West line	County
0	36	20S	37E		800'	South	1887'	East	Lea

8 Proposed Bottom Hole Location If Different From Surface

UL or lot no.	Section	Township	Range	Lot Ida	Feet from the	North/South line	Feet from the	East/West line	County
9 Proposed Pool 1 Wildcat (Hardy Tubb Drinkard Requested)					10 Proposed Pool 2				

11 Work Type Code N	12 Well Type Code O	13 Cable/Rotary R	14 Lease Type Code S	15 Ground Level Elevation 3470'
16 Multiple No	17 Proposed Depth 6975'	18 Formation Tubb-Drinkard	19 Contractor	20 Spud Date 7/1/94

21 Proposed Casing and Cement Program

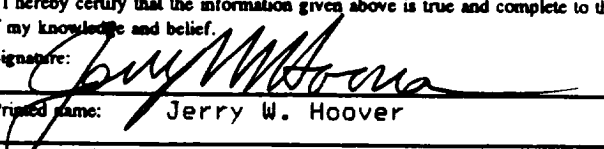
Hole Size	Casing Size	Casing weight/foot	Setting Depth	Sacks of Cement	Estimated TOC
12-1/4"	9-5/8"	40#	1500'	700	Surface
8-3/4"	7"	26#	6975"	1870	Surface

22 Describe the proposed program. If this application is to DEEPEN or PLUG BACK give the data on the present productive zone and proposed new productive zone. Describe the blowout prevention program, if any. Use additional sheets if necessary.

It is proposed to drill this well vertically through the Drinkard formation according to the plan outlined in the following attachments:

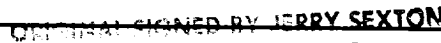
1. Well Location & Acreage Dedication Plat (C-102)
2. Proposed Well Plan Outline
3. Cementing Program
4. BOP & Choke Manifold Specifications

23 I hereby certify that the information given above is true and complete to the best of my knowledge and belief.

Signature:   
Printed name: Jerry W. Hoover  
Title: Sr. Conservation Coordinator  
Date: 5/27/94  
Phone: (915) 686-6548

OIL CONSERVATION DIVISION

Approved by:

Title:   
JERRY SEXTON, SUPERVISOR

Approval Date:

Expiration Date:

Conditions of Approval:  
Attached ☐

District I  
PO Box 1988, Hobbs, NM 88241-1988  
District II  
PO Drawer DD, Artesia, NM 88211-0719  
District III  
1000 Rio Brazos Rd., Artesia, NM 87410  
District IV  
PO Box 2088, Santa Fe, NM 87504-2088

State of New Mexico  
Energy, Minerals & Natural Resources Department

OIL CONSERVATION DIVISION  
PO Box 2088  
Santa Fe, NM 87504-2088

Form C-102  
Revised February 10, 1994  
Instructions on back  
Submit to Appropriate District Office  
State Lease - 4 Copies  
Fee Lease - 3 Copies

☐ AMENDED REPORT

WELL LOCATION AND ACREAGE DEDICATION PLAT

API Number		Pool Code 29760	Pool Name Hardy Tubb Drinkard	
Property Code 13396	Property Name HARDY 36 STATE			Well Number 6
OGRID No. 005023	Operator Name CONOCO, INC.			Elevation 3470'

10 Surface Location

UL or lot no.	Section	Township	Range	Lot Ida	Feet from the	North/South line	Feet from the	East/West line	County
0	36	20-S	37-E		800	South	1887	East	Lea

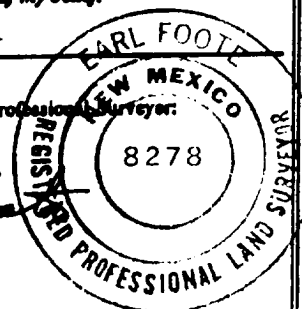
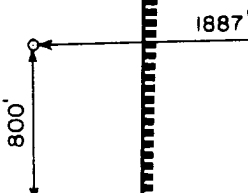
11 Bottom Hole Location If Different From Surface

UL or lot no.	Section	Township	Range	Lot Ida	Feet from the	North/South line	Feet from the	East/West line	County

Dedicated Acres 40	Joint or Infill	Consolidation Code	Order No.
-----------------------	-----------------	--------------------	-----------

NO ALLOWABLE WILL BE ASSIGNED TO THIS COMPLETION UNTIL ALL INTERESTS HAVE BEEN CONSOLIDATED  
OR A NON-STANDARD UNIT HAS BEEN APPROVED BY THE DIVISION

16				17 OPERATOR CERTIFICATION I hereby certify that the information contained herein is true and complete to the best of my knowledge and belief.  Signature: <u>Jerry W. Hoover</u> Printed Name: <u>Jerry W. Hoover</u> Title: <u>Sr. Conservation Coordinator</u> Date: <u>5/27/94</u>
				18 SURVEYOR CERTIFICATION I hereby certify that the well location shown on this plat was plotted from field notes of actual surveys made by me or under my supervision, and that the same is true and correct to the best of my belief. May 19, 1994 Date of Survey Signature and Seal of Professional Surveyor: <u>Earl Foote</u> Certificate Number 8278



**RECEIVED**

**MAY 21 1941**

**POST OFFICE**

# PROPOSED WELL PLA. OUTLINE

WELL NAME **HARDY STATE 36 NO. 6**  
 LOCATION **800' FSL, 1887' FEL SECT. 36 T-20S R-37E LEA CO.**

TVD IN 1000'	MD	FORMATION TOPS & TYPE	DRILLING PROBLEMS	TYPE OF FORMATION EVALUATION	HOLE SIZE	CASING SIZE DEPTH	FRAC GRAD	FORMATION PRESSURE GRADIENT	WT TYPE	MUD TYPE	DAYS
0					12-1/4"				8.4	FRESH	
1		RUSTLER 1430'	POSSIBLE HOLE ENLARGEMENT AND SLOUGHING			9-5/8" 1500' 36# K-55 (700' to surface)			10	BRINE	3
2		B/SALT 2525' YATES 2610' 7-RIVERS 2882'		2-MAN MUD LOGGERS ON AT 3500'							
3											
4		GRAYSBURG 3784' SAN ANDRES 4089'		RES MONITOR ON AT 4089'							
5			POSSIBLE LOST CIRCULATION AND SEEPAGE TO TOTAL DEPTH		8-3/4"						
6		GLORIETTA 5217' BLINEBERRY 5763'	CASES OF DIFFERENTIAL STICKING THROUGH GLORIETTA						BRINE STARCH 10 - 10.2		
7		TUBB 6308' DRINKARD 6602' TD @ 6975'		GR-CAL-DOL-MSPL 3500' - TD GR-CAL-FDC-CNL-PE 3500' - TD		7" TD 26# K-55 (1800' to surface)				17	
8											
9											
10											
11											
12											
13											
14											
15											
16											

DATE \_\_\_\_\_

APPROVED **D.W. EUBANK**  
 DRILLING ENGINEER

RECEIVED

MAY 2 1961

RECEIVED  
MAY 2 1961

WELL NAME: HARDY STATE 36 No. 6

LOCATION: 2080 FNL 2230 FWL Sect. 36 T-20S R-37E

### Casing Program

Surface 9-5/8" inch in 12-1/4 hole at 1500 ft.  
Inter        inch in        hole at        ft.  
Prod 7 inch in 8-3/4 hole at 6975 ft.

### Cementing Program

#### Surface

Lead 500 sxs Class C Mixed at 13.7 ppq  
Additives 4 1/2 GEL 2 1/2 A-7 0.2 1/2 SMS  
Tail 200 sxs Class C Mixed at 14.8 ppq  
Additives 2 1/2 A-7

#### Intermediate (first stage)

Lead        sxs Class        Mixed at        ppq  
Additives         
Tail        sxs Class        Mixed at        ppq  
Additives         
Percent Free Water        Water Loss        cc

#### (second stage)

Lead        sxs Class        Mixed at        ppq  
Additives         
Tail        sxs Class        Mixed at        ppq  
Additives         
Percent Free Water        Water Loss        cc

#### Production (first stage)

Lead 150 sxs Class C Mixed at 12.8 ppq  
Additives 0.2 1/2 SMS  
Tail 150 sxs Class C Mixed at 14.8 ppq  
Additives 1 1/2 RA-10 0.2 1/2 SMS 1 1/2 A-7  
Percent Free Water        Water Loss        cc

#### (second stage)

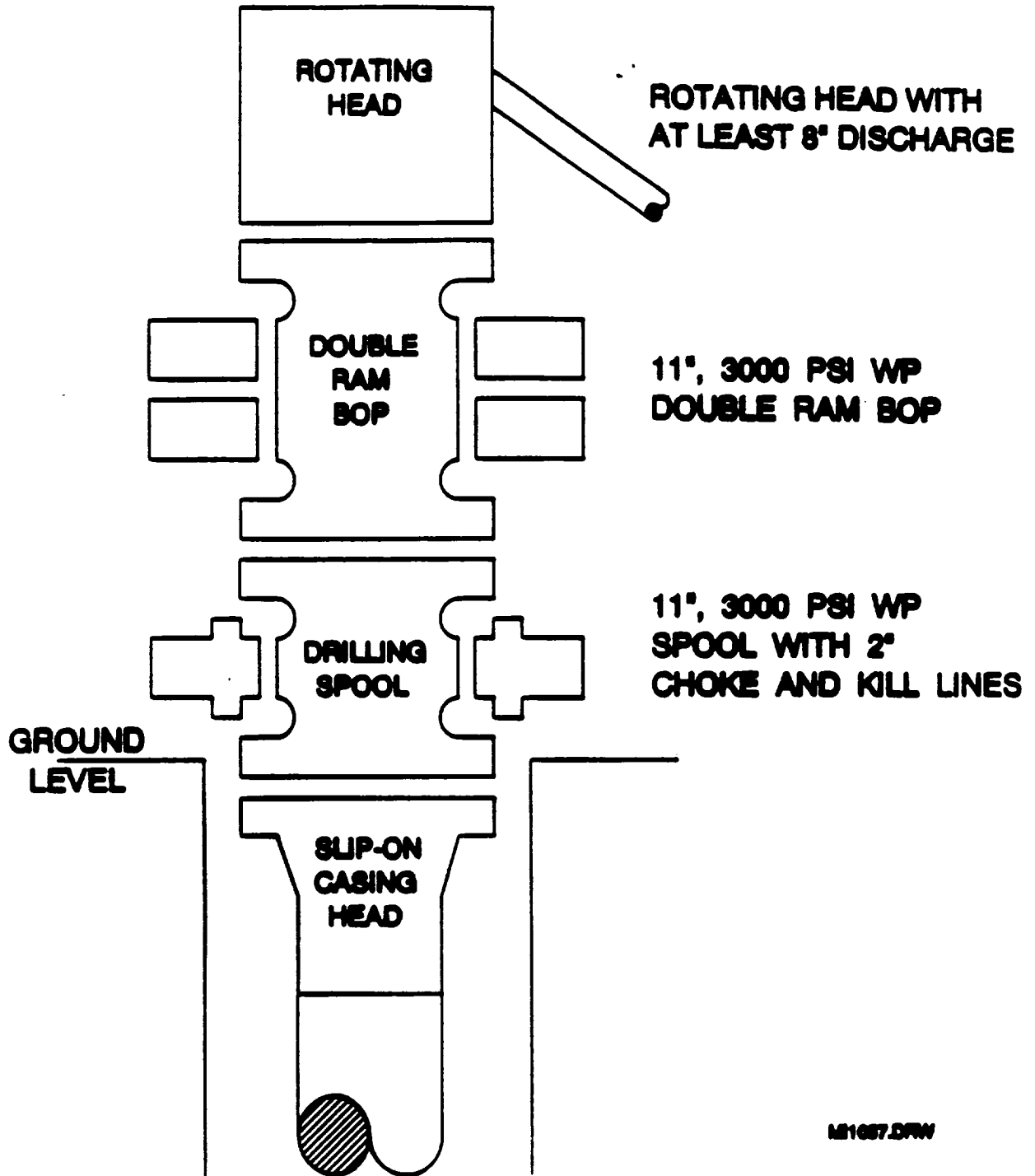
Lead 1070 sxs Class C Mixed at 14.2 ppq  
Additives 8 1/2 A-10 0.25 1/2 FL-62 0.2 1/2 SMS  
Tail 300 sxs Class C Mixed at 14.8 ppq  
Additives 1 1/2 BA-10 0.2 1/2 SMS 1 1/2 A-7  
Percent Free Water        Water Loss        cc

RECEIVED

MAY 21 1996

INDUSTRIAL  
OFFICE

# BOP SPECIFICATIONS



M1057.DRW

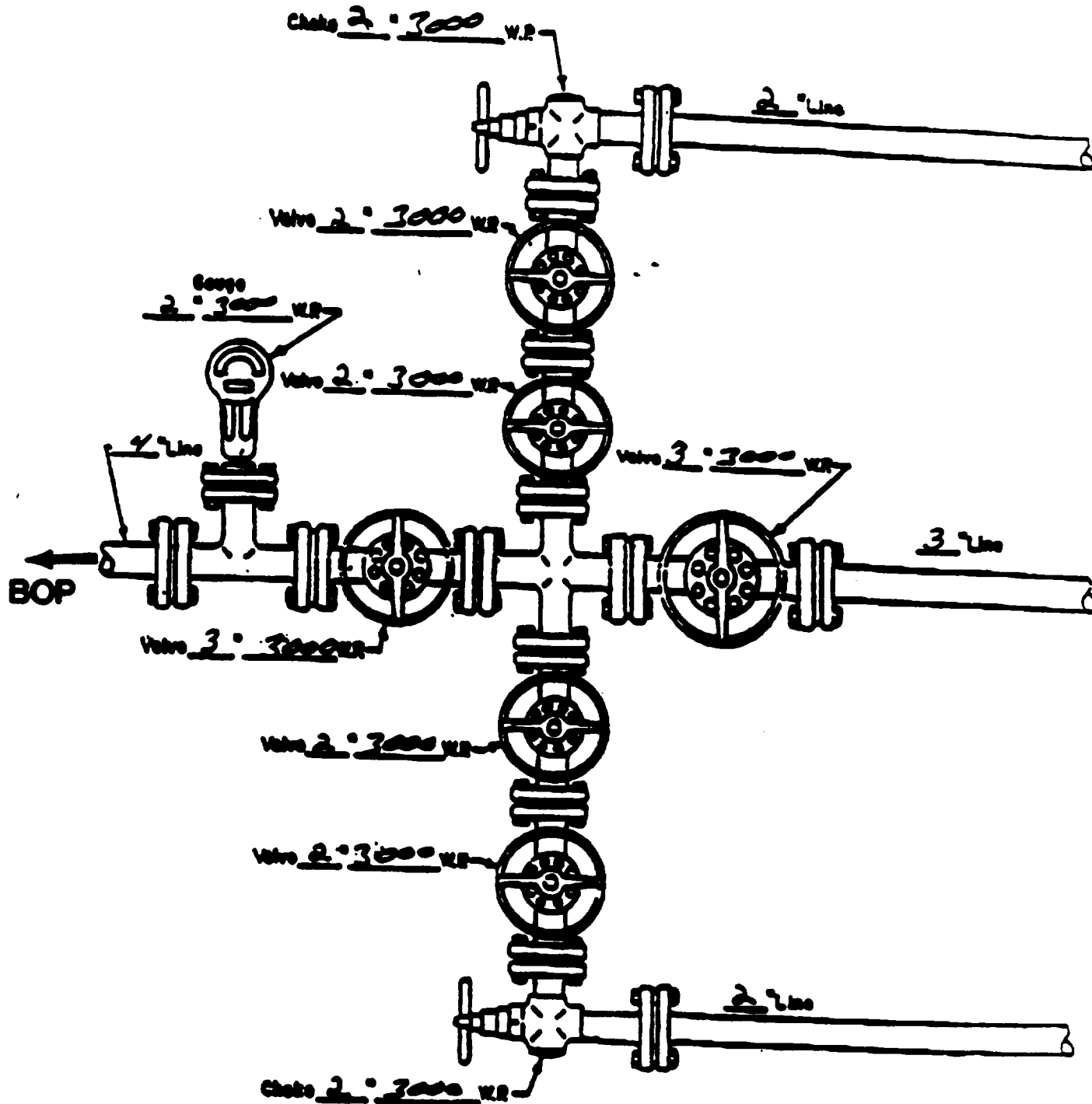


RECEIVED

MAY 2 1921

RECORDS  
OFFICE

# CHUCKE MANIFOLD DIAGRAM



MANIFOLD  
3000 W.P.

☒ Manual  
☐ Hydraulic

**RECEIVED**

**MAY 3 1994**

**U.S. HOUSE  
OFFICE**