

Submit to Appropriate
District Office
State Lease-4 copies
Fee Lease-3 copies

DISTRICT I
P. O. Box 1980, Hobbs, NM 88240

DISTRICT II
P. O. Drawer 00, Artesia, NM 88210

DISTRICT III
1000 Rio Brazos Rd., Aztec, NM 87410

State of New Mexico
Energy, Minerals and Natural Resources Department

OIL CONSERVATION DIVISION

P. O. Box 2088
Santa Fe, New Mexico 87504-2088

NOTICE OF LOCATION

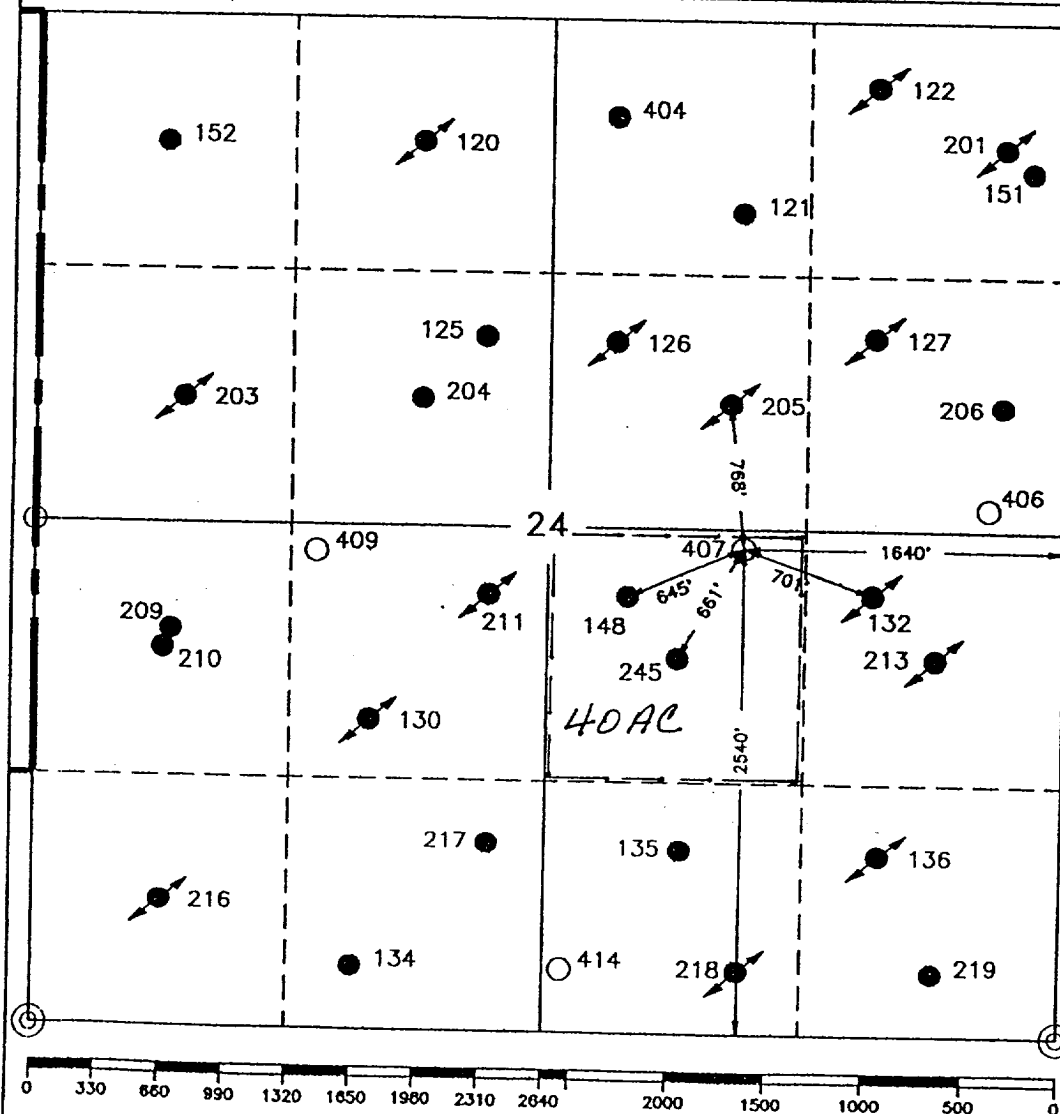
Form C-102
Revised 1-1-89

WELL LOCATION AND ACREAGE DEDICATION PLAT

All distances must be from the outer boundaries of the section

Operator TEXACO EXPLORATION AND PRODUCTION Inc.			Lease COOPER JAL UNIT		Well No. 407
Unit Letter J	Section 24	Township 24 South	Range 36 East	County Lea	
Actual Footage Location of Well: 2540' feet from the South line and 1640' feet from the East line					
Ground level Elev. 3314'	Producing Formation Tansil, Yates, 7RVRS; 7RVRS, Queen		Pool Jalmat; Langlie Mattix	Dedicated Acreage: 40 Acres	

- Outline the acreage dedicated to the subject well by colored pencil or hachure marks on the plat below.
- If more than one lease is dedicated to the well, outline each and identify the ownership thereof (both as to working interest and royalty).
- If more than one lease of different ownership is dedicated to the well, have the interest of all owners been consolidated by communitization, unitization, force-pooling, etc?
☐ Yes ☐ No If answer is "yes" type of consolidation _____
If answer is "no" list the owners and tract descriptions which have actually been consolidated (use reverse side of this form if necessary).
No allowable will be assigned to the well until all interests have been consolidated (by communitization, unitization, forced-pooling, or otherwise) or until a non-standard unit, eliminating such interest, has been approved by the Division.



OPERATOR CERTIFICATION

I hereby certify that the information contained herein is true and complete to the best of my knowledge and belief.

Signature
Royce D. Mariott
Printed Name

Royce D. Mariott

Position

Division Surveyor

Company

Texaco Exp. & Prod.

Date

June 9, 1994

SURVEYOR CERTIFICATION

I hereby certify that the well location shown on this plat was plotted from field notes of actual surveys made by me or under my supervision, and that the same is true and correct to the best of my knowledge and belief.

Date Surveyed

June 7, 1994

Signature & Seal of
Professional Surveyor

John S. Piper

Certificate No.

7254 John S. Piper

RECEIVED

10/10/10

**UCC
OFFICE**