

DISTRICT I

P.O. Box 1980, Hobbs, NM 88241-1980

DISTRICT II

P.O. Box Drawer DD, Artesia, NM 88211-0719

DISTRICT III

1000 Rio Brazos Rd., Aztec, NM 87410

DISTRICT IV

P.O. Box 2088, Santa Fe, NM 87504-2088

State of New Mexico

Energy, Minerals and Natural Resources Department

OIL CONSERVATION DIVISION

P.O. Box 2088

Santa Fe, New Mexico 87504-2088

Form C-101

Revised February 10, 1994

Instructions on back

Submit to Appropriate District Office

State Lease - 6 Copies

Fee Lease - 5 Copies

☐ AMENDED REPORT

APPLICATION FOR PERMIT TO DRILL, RE-ENTER, DEEPEN, PLUGBACK, OR ADD A ZONE

¹ Operator Name and Address TEXACO EXPLORATION & PRODUCTION INC. P.O. Box 3109, Midland Texas 79702		² OGRID Number 022351
⁴ Property Code 10912	⁵ Property Name COOPER JAL UNIT	³ API Number 30-025-32571 ⁶ Well No. 414

⁷ Surface Location

Ul or lot no.	Section	Township	Range	Lot.Idn	Feet From The	North/South Line	Feet From The	East/West Line	County
O	24	24-S	36-E		330	SOUTH	2550	EAST	LEA

⁸ Proposed Bottom Hole Location If Different From Surface

Ul or lot no.	Section	Township	Range	Lot.Idn	Feet From The	North/South Line	Feet From The	East/West Line	County
⁹ Proposed Pool 1 .. <37240>					¹⁰ Proposed Pool 2 .. <33820>				

¹¹ Work Type Code N	¹² Well Type Code O	¹³ Rotary or C.T. R	¹⁴ Lease Type Code P	¹⁵ Ground Level Elevation GR-3312'
¹⁶ Multiple No	¹⁷ Proposed Depth 3750'	¹⁸ Formation ..	¹⁹ Contractor	²⁰ Spud Date 7/1/94

²¹ Proposed Casing and Cement Program

SIZE OF HOLE	SIZE OF CASING	WEIGHT PER FOOT	SETTING DEPTH	SACKS OF CEMENT	EST. TOP
12 1/4	8 5/8	24#	400'	250	SURFACE
7 7/8	5 1/2	15.5#	3750'	950	SURFACE

²² Describe the proposed program. If this application is to DEEPEN or PLUG BACK give the data on the present productive zone and proposed new productive zone. Describe the blowout prevention program, if any. Use additional sheets if necessary.

CEMENTING PROGRAM:

SURFACE CASING - 250 SX CLASS C W/ 2% CACL₂ (14.8 PPG, 1.34 CF/S, 6.31 GW/S).

PRODUCTION CASING - 600 SACKS 35/65 POZ CLASS H W/ 6% GEL, 5% SALT, 1/4# FLOCELE (12.8 PPG, 1.94 CF/S, 10.4 GW/S). F/B 350 SACKS

CLASS H (15.6 PPG, 1.18 CF/S, 5.20 GW/S).

THERE ARE NO OTHER OPERATORS IN THIS QUARTER QUARTER SECTION.

** FIELD: JALMAT/TANSIL, YATES, 7RVRS FORMATIONS; LANGLEIE MATTIX/7RVRS, QUEEN FORMATIONS. REQUEST TO DOWN-HOLE COMMINGLE IS BEING FILED.

UNORTHODOX LOCATION - EXCEPTION HAS BEEN APPLIED FOR. (SEE ATTACHED LETTER.)

N5L-3404

²³ I hereby certify that the rules and regulations of the Oil Conservation Division have been complied with and that the information given above is true and complete to the best of my knowledge and belief.		OIL CONSERVATION DIVISION	
Signature <i>C. P. Basham / JPH</i>			
Printed Name C. P. Basham		Approved By: ORIGINAL SIGNED BY JERRY SEXTON DISTRICT I SUPERVISOR	
Title Drilling Operations Mgr.		Title:	
Date 6/14/94		Approval Date: JUL 01 1994	Expiration Date:
Telephone 688-4620		Conditions of Approval: Attached <input type="checkbox"/>	

Submit to Appropriate
District Office
State Lease-4 copies
Fee Lease-3 copies

State of New Mexico
Energy, Minerals and Natural Resources Department

Form C-102
Revised 1-1-89

OIL CONSERVATION DIVISION

P. O. Box 2088
Santa Fe, New Mexico 87504-2088

DISTRICT I
P. O. Box 1980, Hobbs, NM 88240

DISTRICT II
P. O. Drawer DD, Artesia, NM 88210

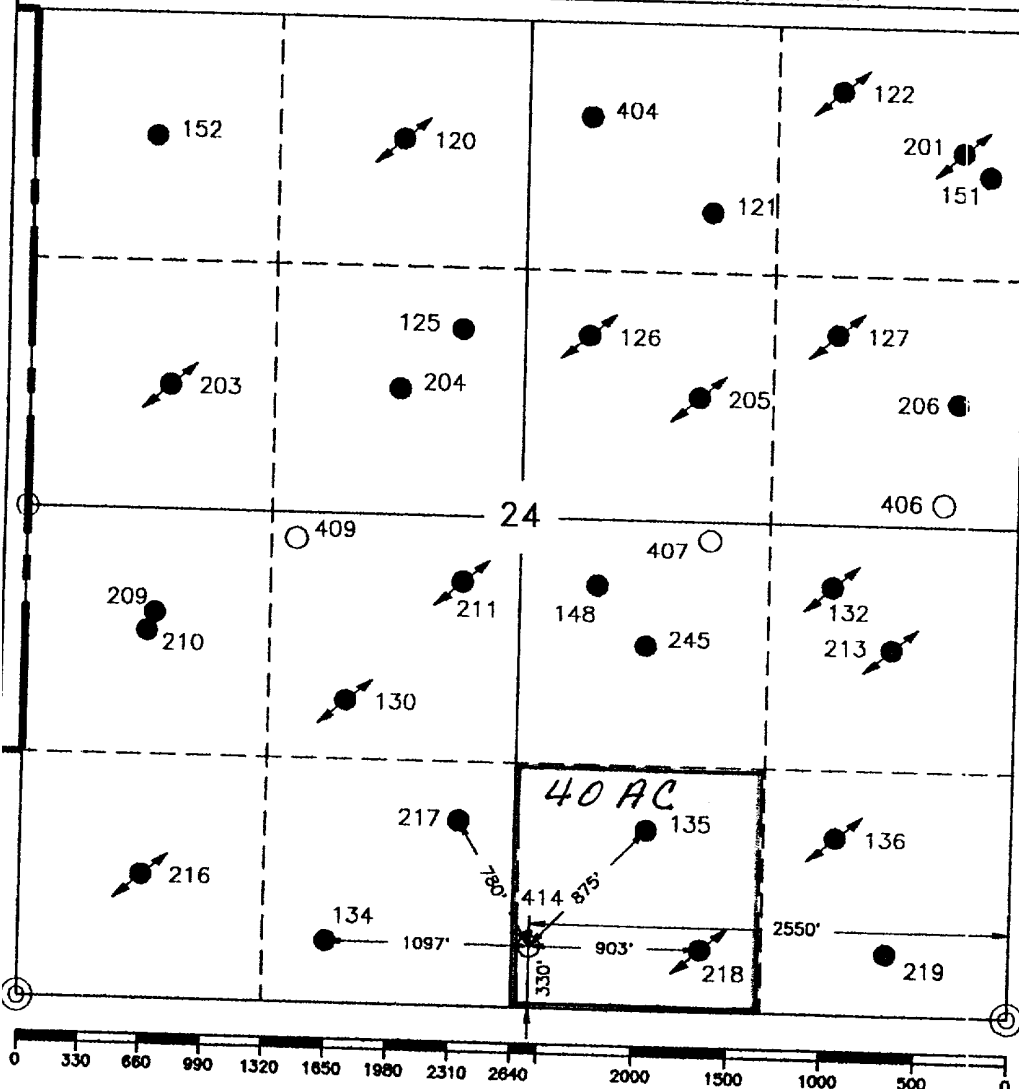
DISTRICT III
1000 Rio Brazos Rd., Aztec, NM 87410

WELL LOCATION AND ACREAGE DEDICATION PLAT

All distances must be from the outer boundaries of the section

Operator TEXACO EXPLORATION AND PRODUCTION Inc.			Lease COOPER JAL UNIT		Well No. 414
Unit Letter O	Section 24	Township 24 South	Range 36 East	County Lea	
Actual Footage Location of Well: 330' feet from the South line and 2550' feet from the East line					
Ground level Elev. 3312'	Producing Formation Tansil, Yates, 7RVRS; 7RVRS, Queen		Pool Jalmat; Langlie Mattix	Dedicated Acreage: 40 Acres	

- Outline the acreage dedicated to the subject well by colored pencil or hachure marks on the plat below.
- If more than one lease is dedicated to the well, outline each and identify the ownership thereof (both as to working interest and royalty).
- If more than one lease of different ownership is dedicated to the well, have the interest of all owners been consolidated by communitization, unitization, force-pooling, etc?
☐ Yes ☐ No If answer is "yes" type of consolidation _____
If answer is "no" list the owners and tract descriptions which have actually been consolidated (use reverse side of this form if necessary).
No allowable will be assigned to the well until all interests have been consolidated (by communitization, unitization, forced-pooling, or otherwise) or until a non-standard unit, eliminating such interest, has been approved by the Division.



OPERATOR CERTIFICATION

I hereby certify that the information contained herein is true and complete to the best of my knowledge and belief.

Signature

Printed Name

Royce D. Mariott

Position

Division Surveyor

Company

Texaco Exp. & Prod.

Date

June 9, 1994

SURVEYOR CERTIFICATION

I hereby certify that the well location shown on this plat was plotted from field notes of actual surveys made by me or under my supervision, and that the name is true and correct to the best of my knowledge and belief.

Date Surveyed

June 7, 1994

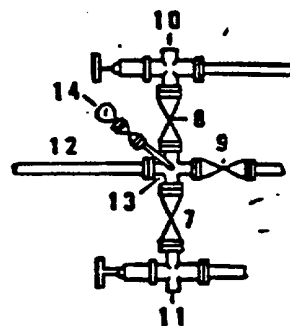
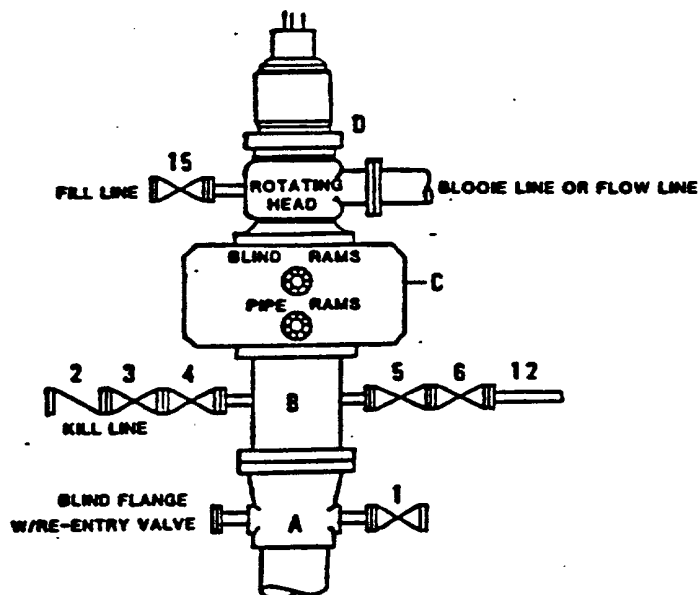
Signature & Seal of
Professional Surveyor

Certificate No.

7254 John S. Piper

**DRILLING CONTROL
CONDITION II-B 3000 WP
FOR AIR DRILLING OR
WHERE NITROGEN OR AIR BLOWS ARE EXPECTED**

H₂S TRIM REQUIRED
YES X NO



DRILLING CONTROL

MATERIAL LIST - CONDITION II - B

- | | |
|----------------|---|
| A | Texaco Wellhead |
| B | 3000# W.P. drilling spool with a 2" minimum flanged outlet for kill line and 3" minimum flanged outlet for choke line. |
| C | 3000# W.P. Dual ram type preventer, hydraulic operated with 1" steel, 3000# W.P. control lines (where sub-structure height is adequate, 2 - 3000# W.P. single ram type preventers may be utilized). |
| D | Rotating Head with fill up outlet and extended Bleed Line. |
| 1,3,4,
7,8, | 2" minimum 3000# W.P. flanged full opening steel gate valve, or Halliburton Lo Torc Plug valve. |
| 2 | 2" minimum 3000# W.P. back pressure valve. |
| 5,6,9 | 3" minimum 3000# W.P. flanged full opening steel gate valve, or Halliburton Lo Torc Plug valve. |
| 12 | 3" minimum schedule 80, Grade "B", seamless line pipe. |
| 13 | 2" minimum x 3" minimum 3000# W.P. flanged cross. |
| 10,11 | 2" minimum 3000# W.P. adjustable choke bodies. |
| 14 | Cameron Mud Gauge or equivalent (location optional in choke line). |
| 15 | 2" minimum 3000# W.P. flanged or threaded full opening steel gate valve, or Halliburton Lo Torc Plug valve. |



TEXACO, INC.
MIDLAND DIVISION
MIDLAND, TEXAS



SCALE:	DATE:	EST. NO.	DRG. NO.
DRAWN BY:			
CHECKED BY:			
APPROVED BY:			

EXHIBIT C



Texaco Exploration and Production Inc
Midland Producing Division

500 N Loraine
Midland TX 79701

P O Box 3109
Midland TX 79702

June 13, 1994

GOV - STATE AND LOCAL GOVERNMENTS

Unorthodox Locations

Cooper Jal Unit Well Nos. 406, 407,
409, and 414

Jalmat and Langlie Mattix Fields
Lea County, New Mexico

State of New Mexico
Energy and Minerals Department
Oil Conservation Division
P. O. Box 2088
Santa Fe, New Mexico 87501-2088

Attention: Mr. Michael E. Stogner

Gentlemen:

An exception, by administrative approval, to Rule 104 F.I. is requested for the captioned wells. These wells are on State land.

The wells must be drilled in these locations to ensure proper development on 20-acre spacing to recover additional reserves in an established waterflood. These reserves could not be recovered with the current 80-acre, 5-spot pattern.

There are no "affected" offset operators to these wells.

Attached are Forms C-102, showing the location for each well and a lease plat showing the existing wells.

Yours very truly,

C. P. Basham / CWH

C. P. Basham
Drilling Operations Manager

CWH:

cc: NMOCD, P. O. Box 1980, Hobbs, NM 88240

Submit to Appropriate
District Office
State Lease-4 copies
Fee Lease-3 copies

State of New Mexico
Energy, Minerals and Natural Resources Department

Form C-102
Revised 1-1-89

OIL CONSERVATION DIVISION

P. O. Box 2088
Santa Fe, New Mexico 87504-2088

DISTRICT I
P. O. Box 1980, Hobbs, NM 88240

DISTRICT II
P. O. Drawer DD, Artesia, NM 88210

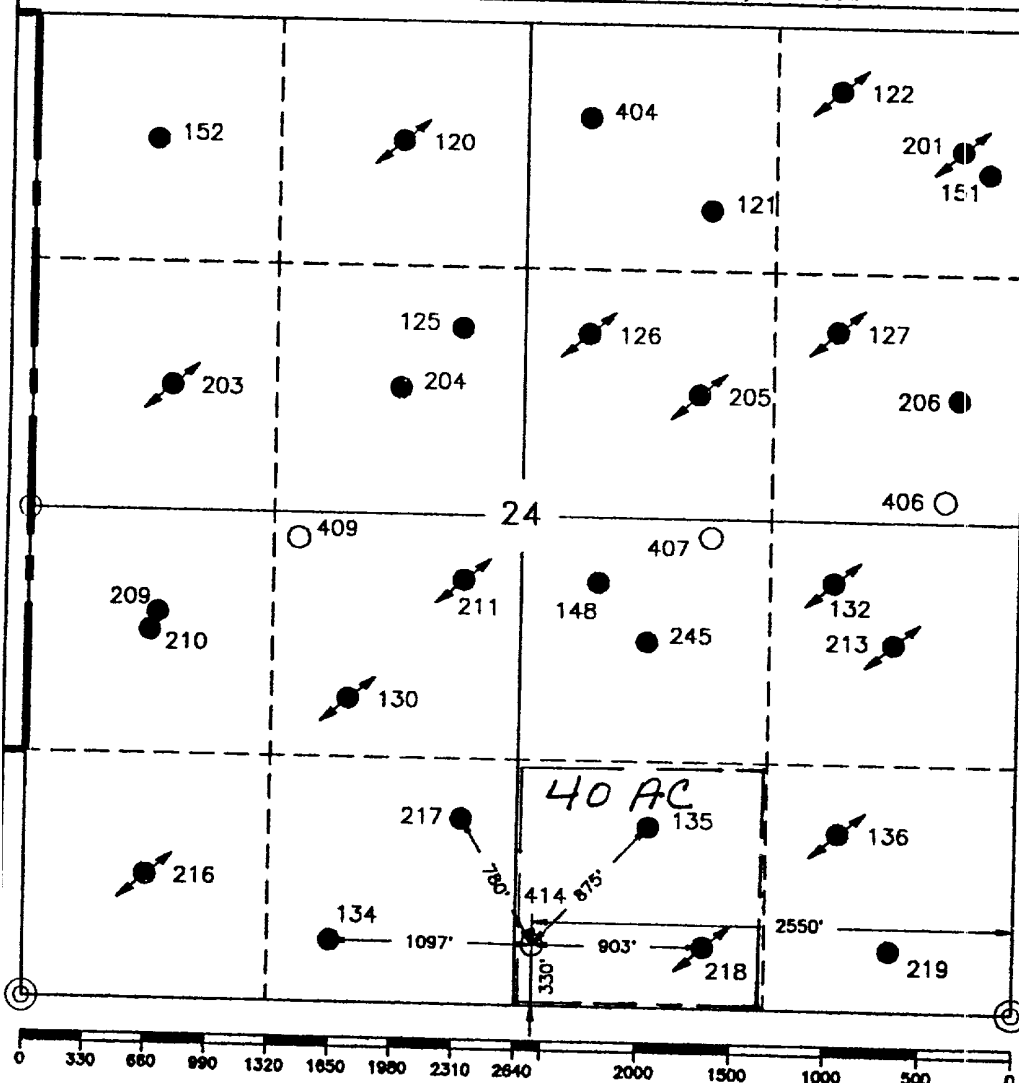
DISTRICT III
1000 Rio Brazos Rd., Artec, NM 87410

WELL LOCATION AND ACREAGE DEDICATION PLAT

All distances must be from the outer boundaries of the section

Operator TEXACO EXPLORATION AND PRODUCTION Inc.			Lease COOPER JAL UNIT		Well No. 414
Unit Letter 0	Section 24	Township 24 South	Range 36 East	County Lea	
Actual Footage Location of Well: 330' feet from the South line and 2550' feet from the East line					
Ground level Elev. 3312'	Producing Formation Tansil, Yates, 7RVRS; 7RVRS, Queen		Pool Jalmit; Langlie Mattix		Dedicated Acreage: 40 Acres

1. Outline the acreage dedicated to the subject well by colored pencil or hatchure marks on the plat below.
2. If more than one lease is dedicated to the well, outline each and identify the ownership thereof (both as to working interest and royalty).
3. If more than one lease of different ownership is dedicated to the well, have the interest of all owners been consolidated by communitization, unitization, force-pooling, etc?
☐ Yes ☐ No If answer is "yes" type of consolidation _____
If answer is "no" list the owners and tract descriptions which have actually been consolidated (use reverse side of this form if necessary).
No allowable will be assigned to the well until all interests have been consolidated (by communitization, unitization, forced-pooling, or otherwise) or until a non-standard unit, eliminating such interest, has been approved by the Division.



OPERATOR CERTIFICATION

I hereby certify that the information contained herein is true and complete to the best of my knowledge and belief.

Signature

Printed Name

Royce D. Mariott

Position

Division Surveyor

Company

Texaco Exp. & Prod.

Date

June 9, 1994

SURVEYOR CERTIFICATION

I hereby certify that the well location shown on this plat was plotted from field notes of actual surveys made by me or under my supervision, and that the same is true and correct to the best of my knowledge and belief.

Date Surveyed

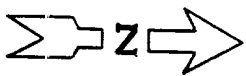
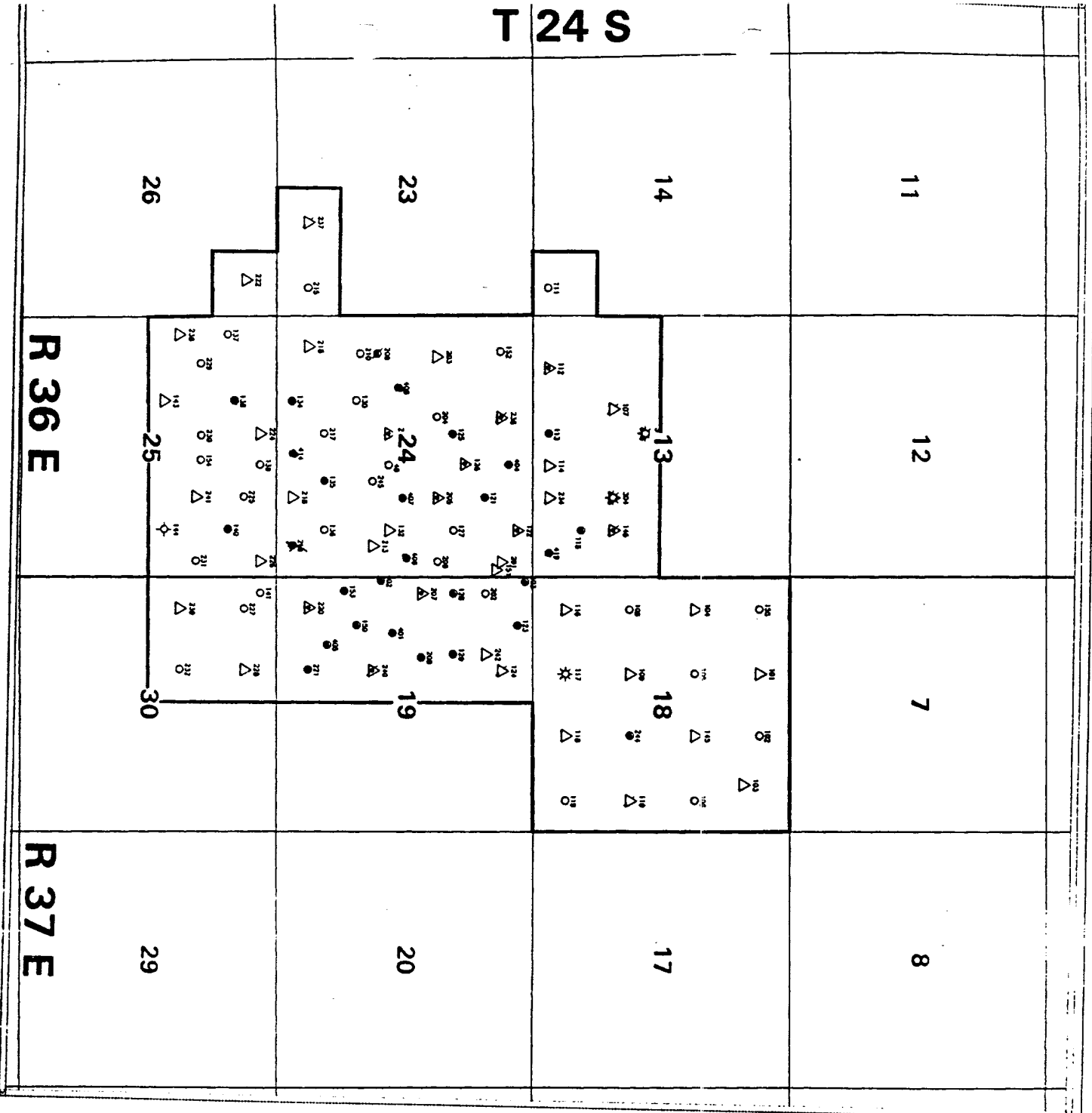
June 7, 1994

Signature & Seal of Professional Surveyor

Certificate No.

7254 John S. Piper

T 24 S



- LEGEND
- SINGLE OIL PRODUCER
 - DHC OIL PRODUCER
 - △ WATER INJECTOR
 - ☆ GAS PRODUCER
 - ⊙ SI DHC PRODUCER
 - △ SI WATER INJECTOR
 - ☆ SI GAS PRODUCER
 - △ SI DUAL INJECTOR
 - ⊙ DUAL INJECTOR
 - LOCATION

Texaco Exploration and Production Inc.
 COOPER JAL UNIT
 LEA COUNTY, NEW MEXICO
 WELL LOCATIONS