

N.M. OIL CONS. COMMISSION
P.O. BOX 1980
HOBBS, NEW MEXICO 88240
UNITED STATES
DEPARTMENT OF THE INTERIOR
BUREAU OF LAND MANAGEMENT

SUBMIT IN TRIPLICATE*
(See instructions on
reverse side)

Form approved.
Budget Bureau No. 1004-0136
Expires: December 31, 1991

APPLICATION FOR PERMIT TO DRILL OR DEEPEN

1a. TYPE OF WORK

DRILL ☒

DEEPEN ☐

b. TYPE OF WELL

OIL
WELL ☒

GAS
WELL ☐

OTHER

SINGLE
ZONE ☐

MULTIPLE
ZONE ☐

2. NAME OF OPERATOR

Barbara Fasken

3. ADDRESS AND TELEPHONE NO.

303 W. Wall, Suite 1900, Midland, TX 79701-5116 915-687-1777

4. LOCATION OF WELL (Report location clearly and in accordance with any State requirements.)*

At surface 2300' FSL & 2300' FEL

Sec. 23, T20S, R32E

At proposed prod. zone

14. DISTANCE IN MILES AND DIRECTION FROM NEAREST TOWN OR POST OFFICE*

32 miles East of Carlsbad, NM

15. DISTANCE FROM PROPOSED*

LOCATION TO NEAREST
PROPERTY OR LEASE LINE, FT.
(Also to nearest drilg. unit line, if any)

2300' / 340'

18. DISTANCE FROM PROPOSED LOCATION*

TO NEAREST WELL, DRILLING, COMPLETED,
OR APPLIED FOR, ON THIS LEASE, FT.

1050'

16. NO. OF ACRES IN LEASE

640

17. NO. OF ACRES ASSIGNED

TO THIS WELL
40

19. PROPOSED DEPTH

8000'

20. ROTARY OR CABLE TOOLS

Rotary

21. ELEVATIONS (Show whether DF, RT, GR, etc.)

3541' GR

22. APPROX. DATE WORK WILL START*

September, 1994

23. PROPOSED CASING AND CEMENTING PROGRAM

R-111-P Potash

| SIZE OF HOLE | GRADE, SIZE OF CASING | WEIGHT PER FOOT | SETTING DEPTH | QUANTITY OF CEMENT |
|--------------|-----------------------|-----------------|---------------|------------------------------------|
| 17 1/2" | H-40, 13-3/8" | 48.00 | 400' | 450 sx CIRCULATE |
| 12 1/4" | K-55, 8-5/8" | 24.00&32.00 | 3050' | 1400 sx CIRCULATE |
| 7-7/8" | J-55, 5 1/2" | 15.50&17.00 | 8000' | 1500 sx (TIE BACK INTO 8 5/8" CSG) |

See attached recommended procedure.

OPER. OGRID NO. 1621
PROPERTY NO. 4238
POOL CODE 53565
EFF. DATE 9-19-94
API NO. 32-025-32670

RECEIVED
JUN 17 10 56 AM '94
OIL & GAS
AREA

IN ABOVE SPACE DESCRIBE PROPOSED PROGRAM: If proposal is to deepen, give data on present productive zone and proposed new productive zone. If proposal is to drill or deepen directionally, give pertinent data on subsurface locations and measured and true vertical depths. Give blowout preventer program, if any.

24.

SIGNED

Tommy C. Taylor

TITLE Drilling & Production Engineer 6-10-94

(This space for Federal or State office use)

PERMIT NO. _____

APPROVAL DATE _____

Application approval does not warrant or certify that the applicant holds legal or equitable title to those rights in the subject lease which would entitle the applicant to conduct operations thereon.
CONDITIONS OF APPROVAL, IF ANY:

APPROVED BY

Michael R. Ford

TITLE

(For) State Director

DATE

8-31-94

*See Instructions On Reverse Side

RECEIVED

SEP 19 1994

NEW YORK
OFFICE

Submit to Appropriate
District Office
State Lease - 4 copies
Fee Lease - 3 copies

State of New Mexico
Energy, Minerals and Natural Resources Department

Form C-102
Revised 1-1-89

OIL CONSERVATION DIVISION

P.O. Box 2088
Santa Fe, New Mexico 87504-2088

MAY 27 1994

DISTRICT I
P.O. Box 1980, Hobbs, NM 88240

DISTRICT II
P.O. Drawer DD, Artesia, NM 88210

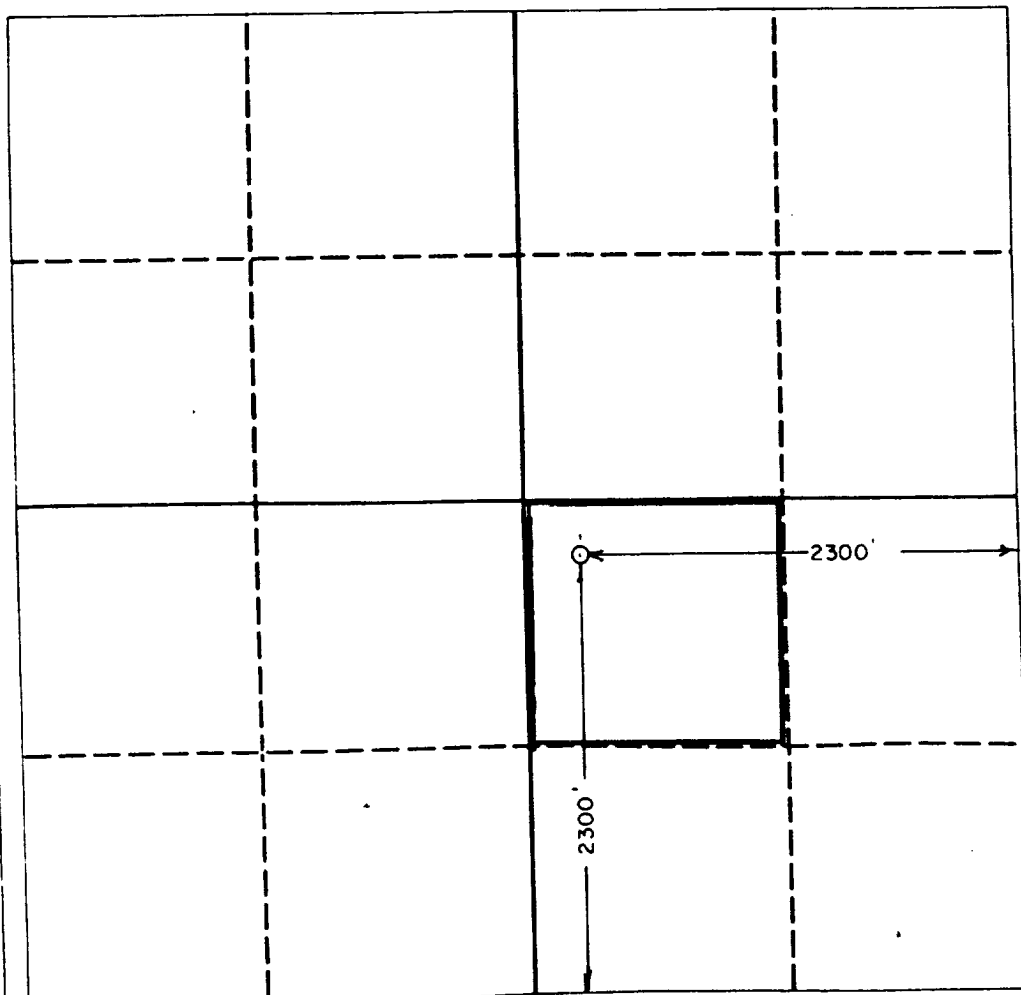
DISTRICT III
1000 Rio Brazos Rd., Aztec, NM 87410

WELL LOCATION AND ACREAGE DEDICATION PLAT

All Distances must be from the outer boundaries of the section

| | | | | | |
|--|---------------------------------|----------------------|---------------------|--------------------------------|---------------|
| Operator BARBARA FASKEN | | | Lease BAETZ "23" | | Well No. 2 |
| Unit Letter J | Section 23 | Township 20 South | Range 32 East | County Lea | |
| Actual Footage Location of Well: 2300 feet from the South line and 2300 feet from the East line | | | | | |
| Ground level Elev. 3540.9 | Producing Formation Delaware | | Pool Salt Lake | Dedicated Acreage: 40 Acres | |

1. Outline the acreage dedicated to the subject well by colored pencil or hachure marks on the plat below.
2. If more than one lease is dedicated to the well, outline each and identify the ownership thereof (both as to working interest and royalty).
3. If more than one lease of different ownership is dedicated to the well, have the interest of all owners been consolidated by communitization, unitization, force-pooling, etc.?
☐ Yes ☐ No If answer is "yes" type of consolidation _____
If answer is "no" list the owners and tract descriptions which have actually been consolidated. (Use reverse side of this form if necessary.)
No allowable will be assigned to the well until all interests have been consolidated (by communitization, unitization, forced-pooling, or otherwise) or until a non-standard unit, eliminating such interest, has been approved by the Division.



OPERATOR CERTIFICATION

I hereby certify that the information contained herein is true and complete to the best of my knowledge and belief.

Signature

Tommy E. Taylor

Printed Name

Tommy E. Taylor

Position

Drilling & Production Eng.

Company

Barbara Fasken

Date

June 7, 1994

SURVEYOR CERTIFICATION

I hereby certify that the well location shown on this plat was plotted from field notes of actual surveys made by me or under my supervision, and that the same is true and correct to the best of my knowledge and belief.

Date Surveyed

May 25, 1994

Signature & Seal of
Professional Surveyor

Certificate No.

6541

RECEIVED

SEP 19 1994

OFFICE

Recommended Procedure

**Barbara Fasken ----- Baetz "23" No. 2 ----- Salt Lake (Delaware) Field
Eddy County, New Mexico**

1. Drill 17-1/2" hole to 400' with spud mud.
2. Set 13-3/8" casing at 400', cement to surface and install 13-5/8" x 3000 psi casinghead and BOP stack. Estimate 450 sx Class "C" with 2% CaCl₂ (s.w. 14.8 ppg, yield 1.32 cuft/sx).
3. Drill 12-1/4" hole with 10 ppg brine water to 3050'. Control seepage with paper.
4. Set and cement 8-5/8" casing at 3050' with sufficient cement to circulate. Estimate 1200 sx HLC with 3% salt and 1/4#/sx Flocele (s.w. 12.4 ppg, yield 1.97 cuft/sx) plus 200 sx Class "C" with 2% CaCl₂ (s.w. 14.8 ppg, yield 1.32 cuft/sx).
5. WOC 12 hours, install 13-5/8" - 3000 psi x 11" 3000 psi spool with secondary seal, bit guide, choke manifold, BOP's and hydril stack.
6. Hydrostatically test 200' of 8-5/8" casing to 2300 psi, casing spool, BOP's and choke manifold to 3000 psi, and hydril to 1500 psi. Install flowline sensor.
7. RU mud logging unit by 4000'.
8. Drill 7-7/8" hole to total depth of 8000' using fresh water to 6000', mud up with polymer starch mud system and maintain 32-34 sec. viscosity, 8.7 ppg weight and 10 cc water loss to total depth. Increase mud viscosity to 38-40 sec. before logging.
9. Log well with CNL-LDT, DIL-MSFL, GR and Caliper. Side wall core all gas shows and zones of interest.
10. Set and cement 5-1/2" production casing (resin coated and centralized through pay zones) with estimated 1000 sx HLC with 0.5% Halad 322 and 1/4#/sx Flocele (s.w. 12.4 ppg, yield 1.97 cuft/sx) plus 500 sx Class "C" with 0.5% Halad 322 (s.w. 14.8 ppg, yield 1.32 cuft/sx).
11. Set slips, nipple down BOP's, install 11"-3000 psi x 7-1/6"-3000 psi tubing head and flow tree.
12. Run temperature survey to locate cement top.
13. Rig down and move out rotary tools.
14. Level location, set mast anchors, move in and rig up completion unit.
15. Complete well as per completion procedure.
16. RDPU. Clean and level location.

RECEIVED

SEP 19 1994

U.S. DEPARTMENT OF JUSTICE
FEDERAL BUREAU OF INVESTIGATION

Recommended Casing Program
A.F.E. No.

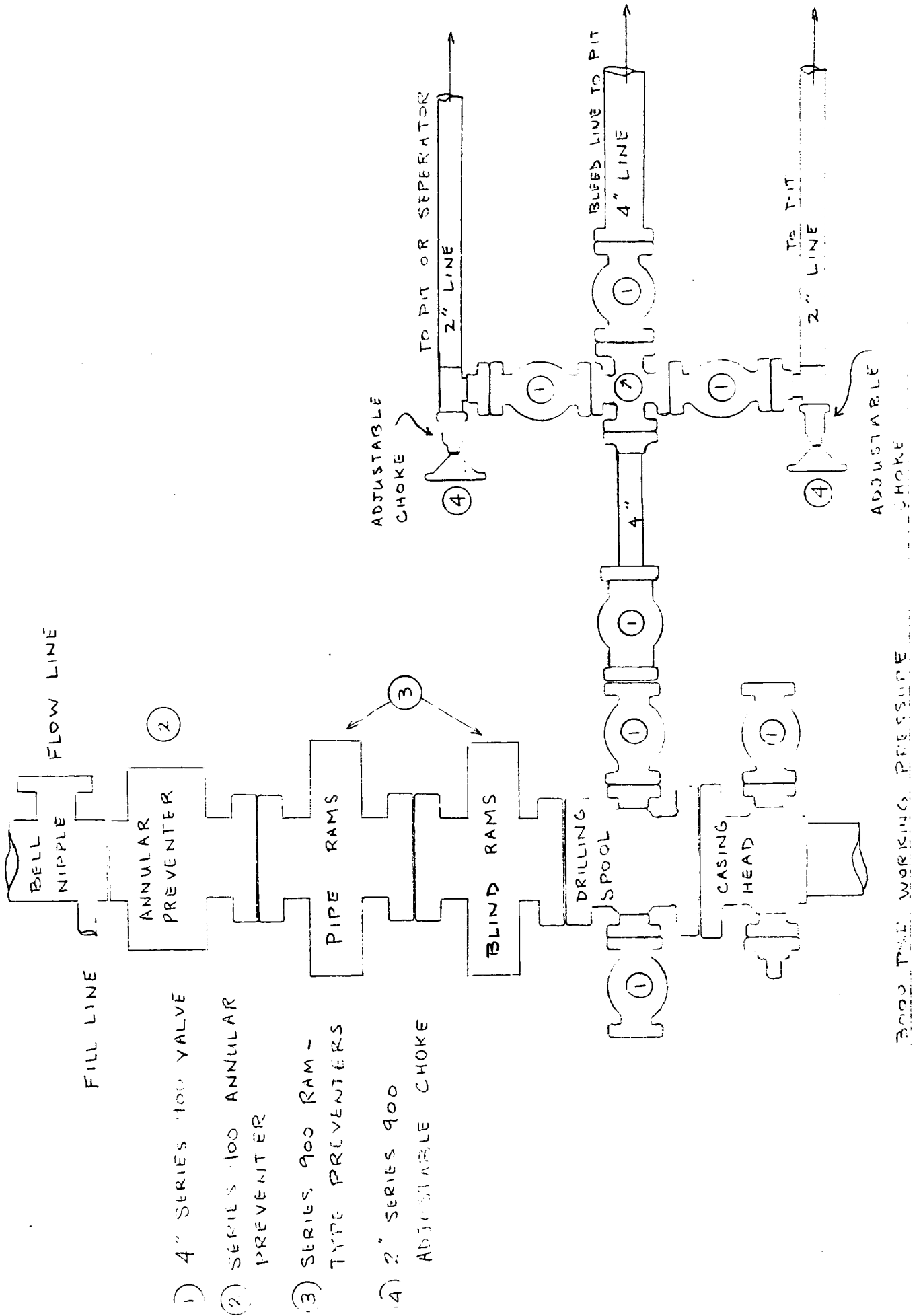
Barbara Fasken ----- Baetz "23" No. 2 ----- Salt Lake (Delaware) Field
Eddy County, N.M.

| | <u>Footage</u> | <u>Size</u> | <u>Weight</u> | <u>Grade</u> | <u>Thread</u> |
|---------------------|----------------|-------------|---------------|--------------|---------------|
| Surface Casing | 400' | 13-3/8" | 48.00#/ft. | H-40 | ST&C |
| Intermediate Casing | 2500' | 8-5/8" | 24.00#/ft. | K-55 | ST&C |
| | 550' | 8-5/8" | 32.00#/ft. | K-55 | ST&C |
| | <u>3050'</u> | | | | |
| Production Casing | 1050' | 5-1/2" | 15.50#/ft. | J-55 | LT&C |
| | 5450' | 5-1/2" | 15.50#/ft. | J-55 | ST&C |
| | 1500' | 5-1/2" | 17.00#/ft. | J-55 | ST&C |
| | <u>8000'</u> | | | | |

RECEIVED

SEP 19 1994

U.S. DEPARTMENT OF JUSTICE
FEDERAL BUREAU OF INVESTIGATION



RECEIVED

SEP 19 1994

OFFICE