

UNITED STATES  
DEPARTMENT OF THE INTERIOR  
BUREAU OF LAND MANAGEMENT

FORM APPROVED  
Budget Bureau No. 1004-0135  
Expires: March 31, 1993

SUNDRY NOTICES AND REPORTS ON WELLS

Do not use this form for proposals to drill or to deepen or reentry to a different reservoir.

Use "APPLICATION FOR PERMIT --" for such proposals

5. Lease Designation and Serial No.

NM 18848

6. If Indian, Alottee or Tribe Name

7. If Unit or CA, Agreement Designation

8. Well Name and Number

SDE '19' FEDERAL

2

9. API Well No.

30-025-32714

10. Field and Pool, Exploratory Area

DELAWARE / SAND DUNES SOUTH BONE SPRINGS

11. County or Parish, State

LEA, NM

SUBMIT IN TRIPLICATE

1. Type of Well:

☒ OIL  
WELL

☐ GAS  
WELL

☐ OTHER

2. Name of Operator

TEXACO EXPLORATION & PRODUCTION INC.

3. Address and Telephone No.

P.O. Box 3109, Midland Texas 79702

688-4606

4. Location of Well (Footage, Sec., T., R., M., or Survey Description)

Unit Letter C : 660 Feet From The NORTH Line and 2310 Feet From The

WEST Line Section 19 Township 23-S Range 32-E

12. Check Appropriate Box(s) To Indicate Nature of Notice, Report, or Other Data

TYPE OF SUBMISSION

☐ Notice of Intent

☒ Subsequent Report

☐ Final Abandonment Notice

TYPE OF ACTION

☐ Abandonment

☐ Recompletion

☐ Plugging Back

☐ Casing Repair

☐ Altering Casing

☒ OTHER: LOCATION CHANGE

☐ Change of Plans

☐ New Construction

☐ Non-Routine Fracturing

☐ Water Shut-Off

☐ Conversion to Injection

☐ Dispose Water

(Note: Report results of multiple completion on Well Completion or Recompletion Report and Log Form.)

13. Describe Proposed or Completed Operations (Clearly state all pertinent details, and give pertinent dates, including estimated date of starting any proposed work. If well is directionally drilled, give subsurface locations and measured and true vertical depths for all markers and zones pertinent to this work.)

THIS LOCATION WAS MOVED 330' EAST FOR GEOLOGICAL REASONS.

ATTACHED IS FORM C-102, A NEW EXHIBIT 'A', AND A NEW EXHIBIT 'B'.

A REVISED ARCHEOLOGICAL REPORT WILL BE FILED BY PECOS ARCHEOLOGICAL CONSULTANTS.

14. I hereby certify that the foregoing is true and correct

SIGNATURE

C. Wade Howard

TITLE

Eng. Assistant

DATE

6/1/95

TYPE OR PRINT NAME

C. Wade Howard

(This space for Federal or State office use)

APPROVED BY

/s/ Yolanda Vega

TITLE

Acting

AREA MANAGER

DATE

JUN 8 1995

CONDITIONS OF APPROVAL, IF ANY:

Title 18 U.S.C. Section 1001, makes it a crime for any person knowingly and willfully to make to any department or agency of the United States any false, fictitious or fraudulent statements or representations as to any matter within its jurisdiction.

RECEIVED

14 1995

OFFICE

DISTRICT I  
P. O. Box 1980, Hobbs, NM 88240

DISTRICT II  
P. O. Drawer DD, Artesia, NM 88210

DISTRICT III  
1000 Rio Brazos Rd., Aztec, NM 87410

DISTRICT IV  
P. O. Box 2088, Santa Fe, NM 87504-2088

State of New Mexico  
Energy, Minerals and Natural Resources Department

OIL CONSERVATION DIVISION

PO Box 2088  
Santa Fe, NM 87504-2088

Form C-102  
Revised February 10, 1994

Instructions on back

Submit to Appropriate District Office

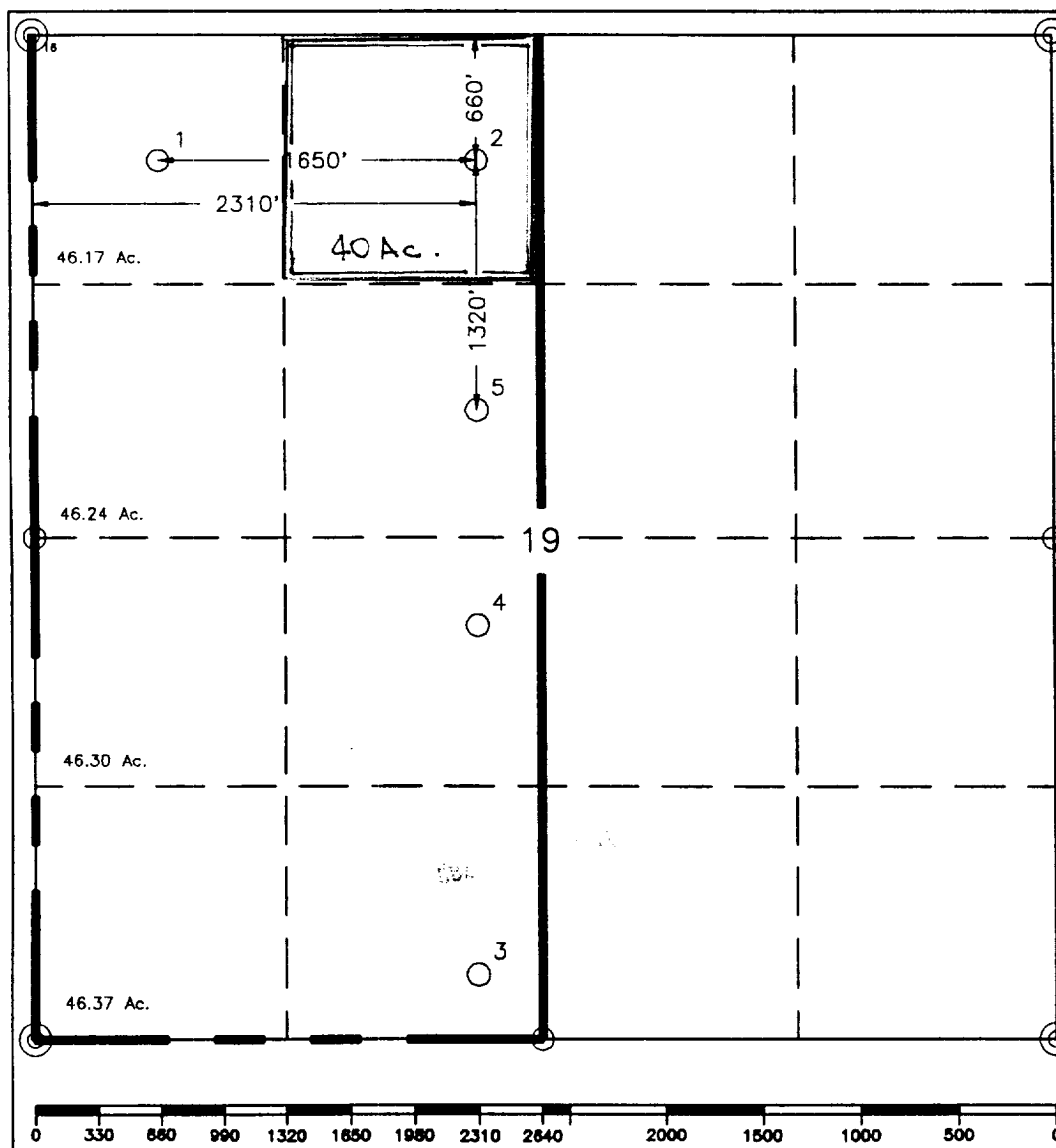
State Lease-4 copies  
Fee Lease-3 copies

☐ AMENDED REPORT

WELL LOCATION AND ACREAGE DEDICATION PLAT

<sup>1</sup> API Number 30-025-32714		<sup>2</sup> Pool Code		<sup>3</sup> Pool Name SANDS DUNES SOUTH BONE SPRINGS / DELAWARE					
<sup>4</sup> Property Code 15867		<sup>5</sup> Property Name SDE FEDERAL "19"			<sup>6</sup> Well Number 2				
<sup>7</sup> GRID No. 22351		<sup>8</sup> Operator Name TEXACO EXPLORATION & PRODUCTION, INC.			<sup>9</sup> Elevation 3624'				
<sup>10</sup> Surface Location									
UL or lot no. C	Section 19	Township 23-S	Range 32-E	Lot Idn	Feet from the 660'	North/South line North	Feet from the 2310'	East/West line West	<sup>7</sup> County Lea
<sup>11</sup> Bottom Hole Location If Different From Surface									
UL or lot no.	Section	Township	Range	Lot Idn	Feet from the	North/South line	Feet from the	East/West line	<sup>7</sup> County
<sup>12</sup> Dedicated Acres 40		<sup>13</sup> Joint or Infill		<sup>14</sup> Consolidation Code		<sup>15</sup> Order No.			

NO ALLOWABLE WILL BE ASSIGNED TO THIS COMPLETION UNTIL ALL INTERESTS HAVE BEEN CONSOLIDATED  
OR A NON-STANDARD UNIT HAS BEEN APPROVED BY THE DIVISION.



<sup>17</sup>OPERATOR CERTIFICATION

I hereby certify that the information contained herein is true and complete to the best of my knowledge and belief.

Signature

*C. Wade Howard*

Printed Name

C. Wade Howard

Position

Engineer's Assistant

Company

Texaco Expl. & Prod. Inc.

Date

May 31, 1995

<sup>18</sup>SURVEYOR CERTIFICATION

I hereby certify that the well location shown on this plat was plotted from field notes of actual surveys made by me or under my supervision, and that the same is true and correct to the best of my knowledge and belief.

Date Surveyed

May 25, 1995

Signature & Seal of  
Professional Surveyor

*John S. Piper*

Certificate No.

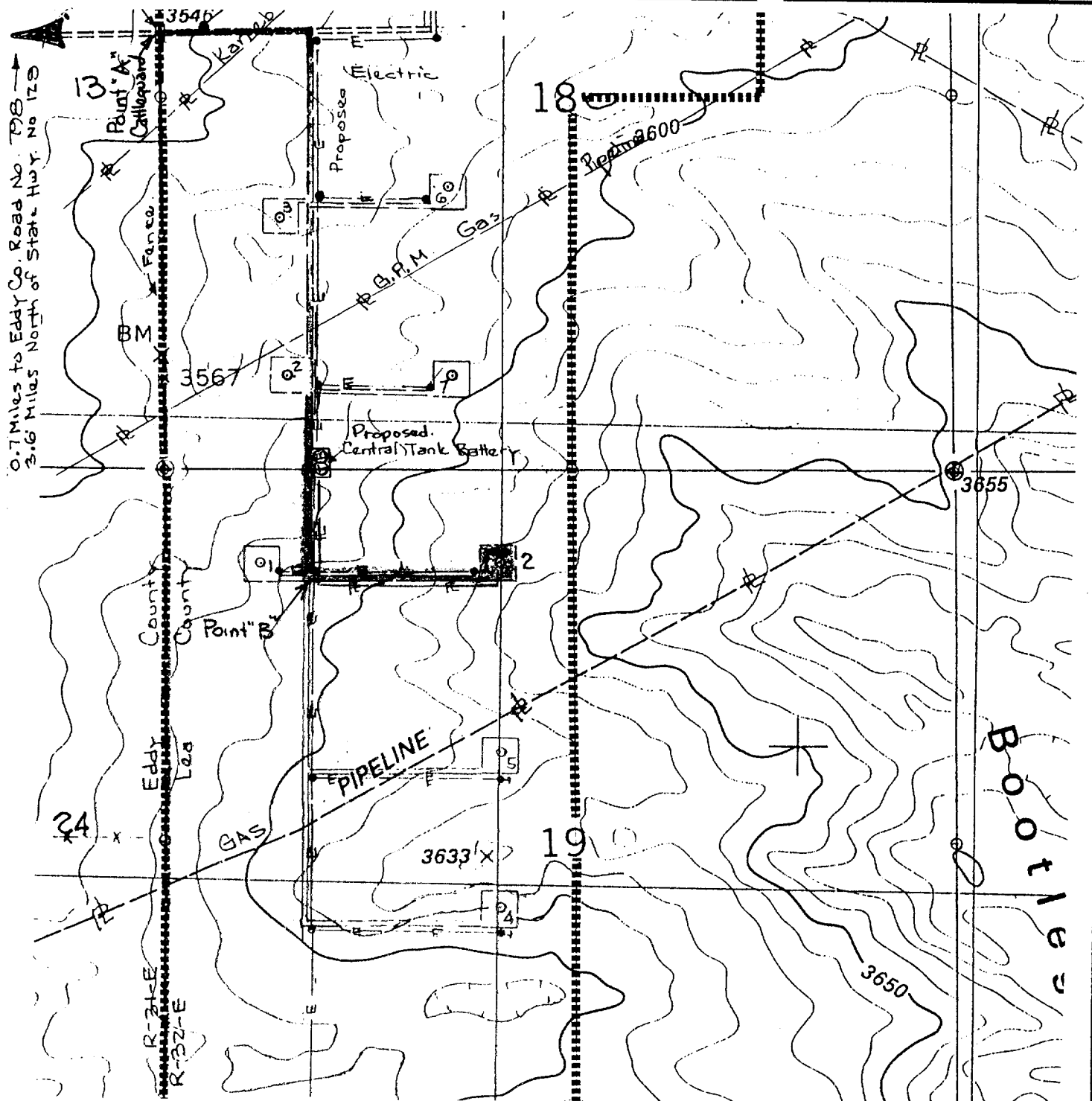
7254 John S. Piper

Sheet 8 of 8

○ = Staked Location ● = Producing Well ● = Injection Well ● = Water Supply Well ● = Plugged & Abandon Well

**RECEIVED**

JUN 14 1995  
JCD HOBBS  
OFFICE



### LEGEND OF SYMBOLS

- = Access Road Federal Land (Yellow)
- = Access Road State Land (Green)
- = Resource Road on Lease (Brown)
- = Proposed Resource Road (Red)
- = Proposed Electric Line (Orange)
- = Proposed Gas Pipeline (Green)
- = Staked Well Location
- = Producing Well Location
- = Water Well
- = Found 1" Iron Pipe With Brass Cap
- ⊙ = Found 2" Iron Pipe With Brass Cap
- = Unit or Lease Boundary

### EXHIBIT "A" ACCESS ROAD AND FACILITIES MAP

### TEXACO EXPLORATION AND PRODUCTION

SDE Federal "19" No. 2  
660' FNL & 2310' FWL Section 19,  
T-23-S, R-32-E, NMPM, Lea County, NM

Drawn by: D .M. Ballew

Scale: 1" = 1000 Feet

Date: May 31, 1995

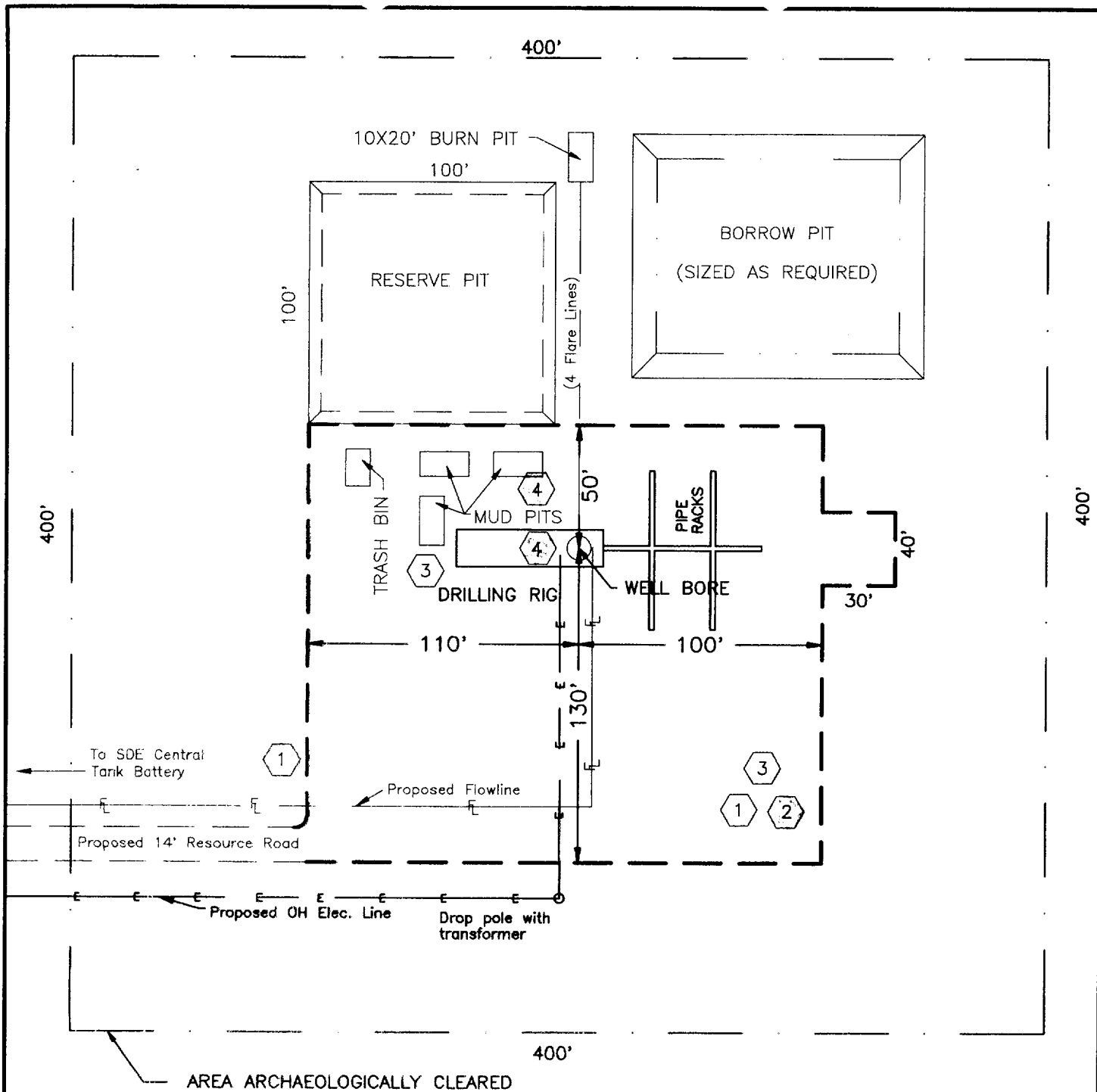
C. Wade Howard

Checked by: J. S. Piper

Sheet 7 of 8

RECEIVED

APR 19 1968  
U.S. AIR FORCE  
OFFICE



# H<sub>2</sub>S DRILLING OPERATION PLAN

1

Briefing Station

2

H<sub>2</sub>S Safety Trailer

3

Windsocks

4

H<sub>2</sub>S Detectors, Shale Shaker,  
Rotating Head,  
Rig Floor

Prevailing Wind from the South

## EXHIBIT "B" DRILLING RIG LAYOUT

**TEXACO EXPLORATION AND PRODUCTION INC.**

SDE "19" Federal No. 2  
Located 660' FNL & 2310' FWL, Section 19,  
T-23-S, R-32-E, NMPM, Lea County, NM

Drawn by: D. M. Ballew

Scale: 1" = 60'

Date: May 31, 1995

C. WADE HOWARD

Checked by: J. S. Piper

Sheet 7 of 8

**RECEIVED**

JUN 14 1986  
OCD HOBBS  
OFFICE