

DISTRICT I

P.O. Box 1980, Hobbs, NM 88241-1980

DISTRICT II

P.O. Box Drawer DD, Artesia, NM 88211-0719

DISTRICT III

1000 Rio Brazos Rd., Aztec, NM 87410

DISTRICT IV

P.O. Box 2088, Santa Fe, NM 87504-2088

State of New Mexico

Energy, Minerals and Natural Resources Department

Form C-101

Revised February 10, 1994

Instructions on back

Submit to Appropriate District Office

State Lease - 6 Copies

Fee Lease - 5 Copies

OIL CONSERVATION DIVISION

P.O. Box 2088

Santa Fe, New Mexico 87504-2088

☐ AMENDED REPORT**APPLICATION FOR PERMIT TO DRILL, RE-ENTER, DEEPEN, PLUGBACK, OR ADD A ZONE**

¹ Operator Name and Address TEXACO EXPLORATION & PRODUCTION INC. P.O. Box 3109, Midland Texas 79702		² OGRID Number 022351
⁴ Property Code 10917	⁵ Property Name COOPER JAL UNIT	³ API Number 3D-D25-32858 ⁶ Well No. 411

7 Surface Location

UI or lot no.	Section	Township	Range	Lot.Idn	Feet From The	North/South Line	Feet From The	East/West Line	County
J	24	24-S	36-E		1600	SOUTH	1425	EAST	LEA

8 Proposed Bottom Hole Location If Different From Surface

UI or lot no.	Section	Township	Range	Lot.Idn	Feet From The	North/South Line	Feet From The	East/West Line	County
⁹ Proposed Pool 1 JALMAT - 37240 33820					¹⁰ Proposed Pool 2 LANGLIE MATTIX - 33820 37240				

¹¹ Work Type Code N	¹² Well Type Code O	¹³ Rotary or C.T. ROTARY	¹⁴ Lease Type Code P	¹⁵ Ground Level Elevation 3314'
¹⁶ Multiple No	¹⁷ Proposed Depth 3800'	¹⁸ Formation TNSL-YTS-7RV-QUN	¹⁹ Contractor	²⁰ Spud Date 4/1/95

21 Proposed Casing and Cement Program

SIZE OF HOLE	SIZE OF CASING	WEIGHT PER FOOT	SETTING DEPTH	SACKS OF CEMENT	EST. TOP
12 1/4	8 5/8	24#	400'	250 SACKS	SURFACE
7 7/8	5 1/2	15.5#	3800'	850 SACKS	SURFACE

22 Describe the proposed program. If this application is to DEEPEN or PLUG BACK give the data on the present productive zone and proposed new productive zone. Describe the blowout prevention program, if any. Use additional sheets if necessary.

CEMENTING PROGRAM:

SURFACE CASING - 250 SACKS CLASS C w/ 2% CACL2 (14.8 PPG, 1.34 CF/S, 6.31 GW/S).

PRODUCTION CASING - 500 SACKS 35/65 POZ H w/ 6% GEL, 5% SALT, 1/4# FLOCELE (12.8 PPG, 1.94 CF/S, 10.4 GW/S). F/B 350 SACKS CLASS H (15.6 PPG, 1.18 CF/S, 5.2 GW/S).

THERE ARE NO OTHER OPERATORS IN THIS QUARTER QUARTER SECTION.

REQUEST TO DOWN-HOLE COMMINGLE THE JALMAT AND LANGLIE MATTIX WILL BE FILED.

UNORTHODOX LOCATION: EXCEPTION HAS BEEN APPLIED FOR. (SEE ATTACHED LETTER.)

NSL-3480

²³ I hereby certify that the rules and regulations of the Oil Conservation Division have been complied with and that the information given above is true and complete to the best of my knowledge and belief.		OIL CONSERVATION DIVISION	
Signature <i>C. Wade Howard</i>		Approved By: ORIGINAL SIGNED BY JERRY SEXTON	
Printed Name C. Wade Howard		Title: DISTRICT I SUPERVISOR	
Title Eng. Assistant		Approval Date: FEB 15 1995 Expiration Date:	
Date 2/10/95	Telephone 688-4606	Conditions of Approval: Attached <input type="checkbox"/>	

DISTRICT I
P. O. Box 1980, Hobbs, NM 88240

State of New Mexico
Energy, Minerals and Natural Resources Department

Form C-102
Revised February 10, 1994

DISTRICT II
P. O. Drawer DD, Artesia, NM 88210

Instructions on back

DISTRICT III
1000 Rio Brazos Rd., Aztec, NM 87410

OIL CONSERVATION DIVISION

PO Box 2088
Santa Fe, NM 87504-2088

Submit to Appropriate District Office

DISTRICT IV
P. O. Box 2088, Santa Fe, NM 87504-2088

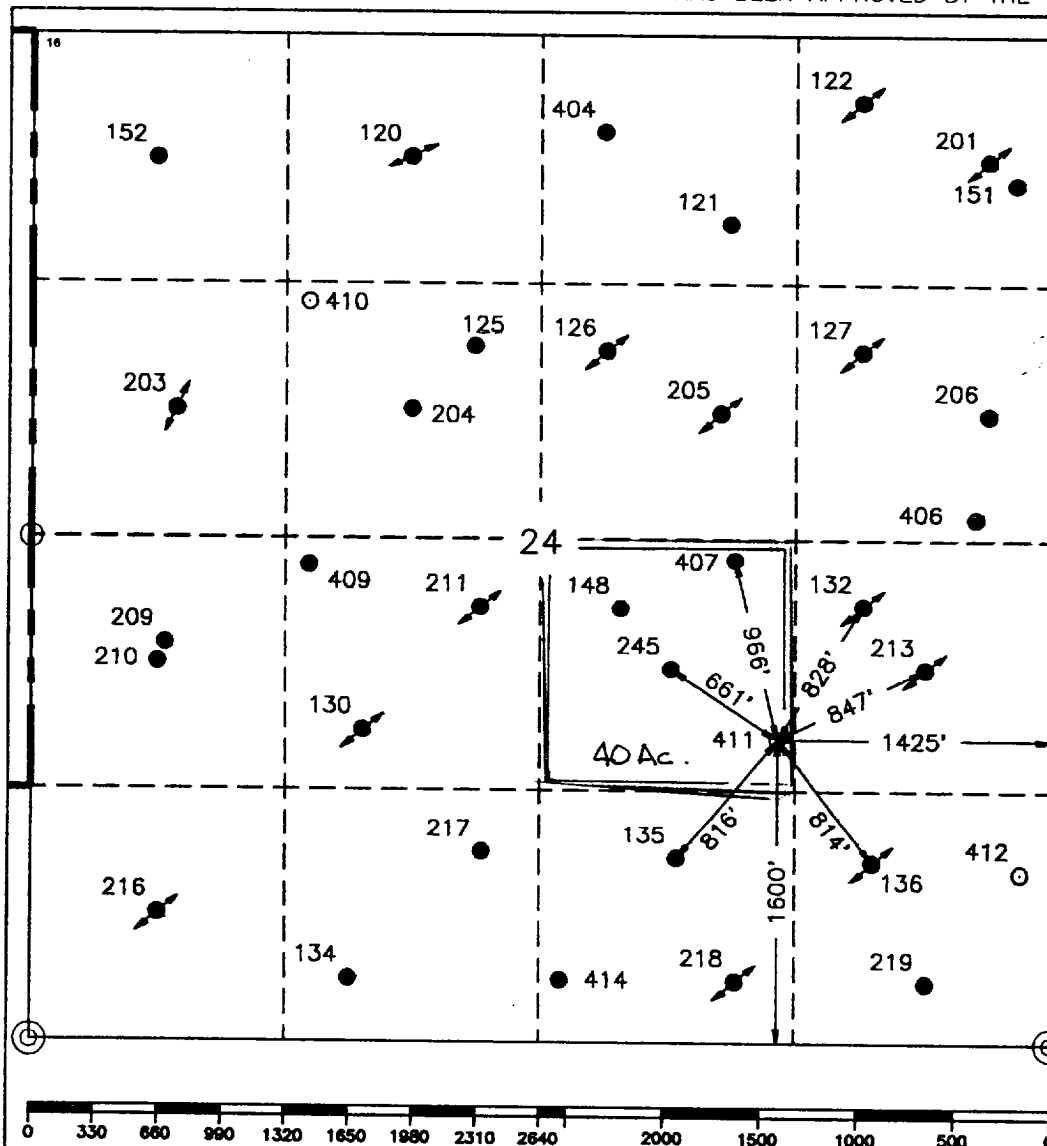
State Lease-4 copies
Fee Lease-3 copies

☐ AMENDED REPORT

WELL LOCATION AND ACREAGE DEDICATION PLAT

¹ API Number 30-025-32858		² Pool Code 37240 ; 33820		³ Pool Name Jalmit; Langlie Mattix					
⁴ Property Code 10917		⁵ Property Name COOPER JAL UNIT				⁶ Well Number 411			
⁷ OCRID No. 22351		⁸ Operator Name TEXACO EXPLORATION & PRODUCTION, INC.				⁹ Elevation 3314			
¹⁰ Surface Location									
UL or lot no. J	Section 24	Township 24-S	Range 36-E	Lot Idn	Feet from the 1600'	North/South line South	Feet from the 1425'	East/West line East	County Lea
¹¹ Bottom Hole Location If Different From Surface									
UL or lot no.	Section	Township	Range	Lot Idn	Feet from the	North/South line	Feet from the	East/West line	County
¹² Dedicated Acres 40		¹³ Joint or Infill		¹⁴ Consolidation Code		¹⁵ Order No.			

NO ALLOWABLE WILL BE ASSIGNED TO THIS COMPLETION UNTIL ALL INTERESTS HAVE BEEN CONSOLIDATED
OR A NON-STANDARD UNIT HAS BEEN APPROVED BY THE DIVISION.



¹⁶OPERATOR CERTIFICATION

I hereby certify that the information contained herein is true and complete to the best of my knowledge and belief.

Signature

Printed Name

C. Wade Howard

Position

Engineer Technician

Company

Texaco Expl. & Prod. Inc.

Date

January 30, 1995

¹⁷SURVEYOR CERTIFICATION

I hereby certify that the well location shown on this plat was plotted from field notes of actual surveys made by me or under my supervision, and that the same is true and correct to the best of my knowledge and belief.

Date Surveyed

January 19, 1995

Signature & Seal of
Professional Surveyor

Certificate No.

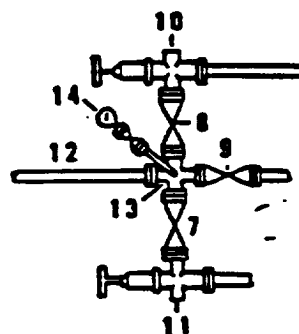
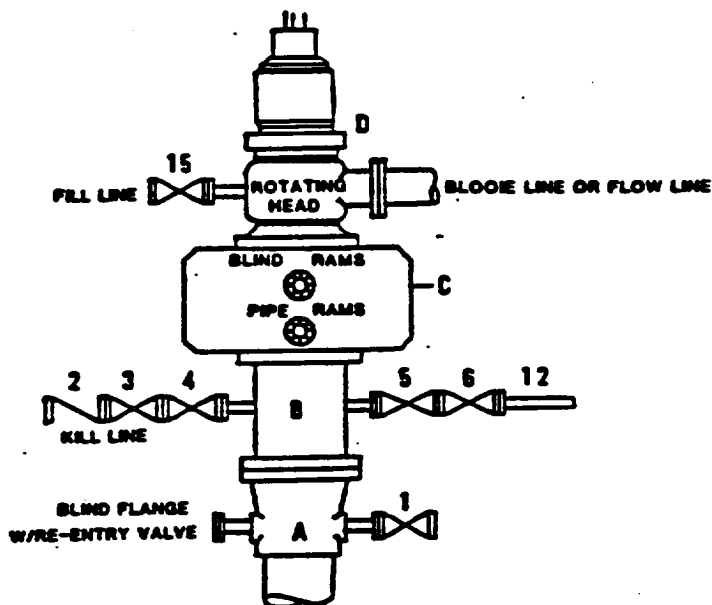
7254 John S. Piper

Sheet

○ = Staked Location ● = Producing Well ↗ = Injection Well ◇ = Water Supply Well ✕ = Plugged & Abandon Well
⊙ = Found Section Corner, 2 or 3" Iron Pipe & GLO B.C. ○ = Found 1/4 Section Corner, 1" Iron Pipe & GLO B.C.

**DRILLING CONTROL
CONDITION II-B 3000 WP
FOR AIR DRILLING OR
WHERE NITROGEN OR AIR BLOWS ARE EXPECTED**

H₂S TRIM REQUIRED
YES X NO



DRILLING CONTROL

MATERIAL LIST - CONDITION II - B

- | | |
|----------------|---|
| A | Texaco Wellhead |
| B | 3000# W.P. drilling spool with a 2" minimum flanged outlet for kill line and 3" minimum flanged outlet for choke line. |
| C | 3000# W.P. Dual ram type preventer, hydraulic operated with 1" steel, 3000# W.P. control lines (where sub-structure height is adequate, 2 - 3000# W.P. single ram type preventers may be utilized). |
| D | Rotating Head with fill up outlet and extended Bleed Line. |
| 1,3,4,
7,8, | 2" minimum 3000# W.P. flanged full opening steel gate valve, or Malliburton Lo Torc Plug valve. |
| 2 | 2" minimum 3000# W.P. back pressure valve. |
| 5,6,9 | 3" minimum 3000# W.P. flanged full opening steel gate valve, or Malliburton Lo Torc Plug valve. |
| 12 | 3" minimum schedule 80, Grade "B", seamless line pipe. |
| 13 | 2" minimum x 3" minimum 3000# W.P. flanged cross. |
| 10,11 | 2" minimum 3000# W.P. adjustable choke bodies. |
| 14 | Cameron Mud Gauge or equivalent (location optional in choke line). |
| 15 | 2" minimum 3000# W.P. flanged or threaded full opening steel gate valve, or Malliburton Lo Torc Plug valve. |



TEXACO, INC.
MIDLAND DIVISION
MIDLAND, TEXAS



SCALE	DATE	EST NO	DRG NO
DRAWN BY			
CHECKED BY			
APPROVED BY			

EXHIBIT C

RECEIVED

JOHN FOSBES
OFFICE



February 1, 1995

GOV - STATE AND LOCAL GOVERNMENTS

Unorthodox Locations

Cooper Jal Unit Well Nos. 408, 410,
411, and 412

Jalmat and Langlie Mattix Fields
Lea County, New Mexico

State of New Mexico
Energy and Minerals Department
Oil Conservation Division
2040 South Pacheco
Santa Fe, New Mexico 87505

Attention: Mr. Michael E. Stogner

Gentlemen:

An exception, by administrative approval, to Rule 104 F.I. is requested for the captioned wells. Wells 408, 410, and 411 are on State land and 412 is on Federal minerals.

The wells must be drilled in these locations to ensure proper development on 20-acre spacing to recover additional reserves in an established waterflood. These reserves could not be recovered with the current 80-acre, 5-spot pattern.

There are no "affected" offset operators to these wells.

Attached are Forms C-102, showing the location for each well and a lease plat showing the existing wells.

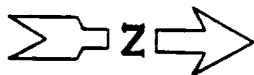
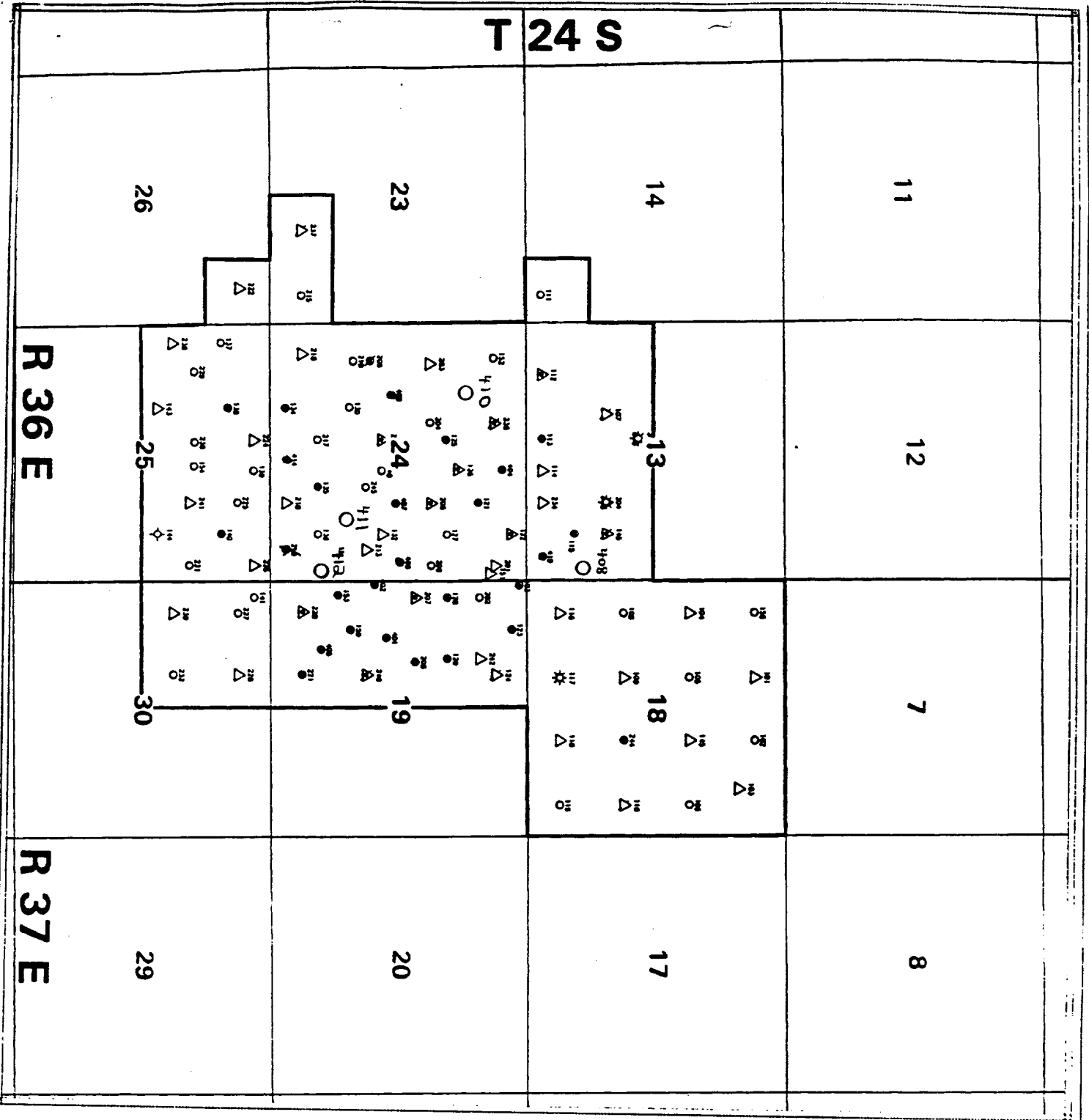
Yours very truly,

C. W. Howard

C. W. Howard
Engineer's Assistant

CWH:

cc: NMOCD, P. O. Box 1980, Hobbs, NM 88240



- LEGEND**
- SINGLE OIL PRODUCER
 - DHC OIL PRODUCER
 - △ WATER INJECTOR
 - ☆ GAS PRODUCER
 - SI DHC PRODUCER
 - △ SI WATER INJECTOR
 - ☆ SI GAS PRODUCER
 - △ SI DUAL INJECTOR
 - DUAL INJECTOR
 - LOCATION

Texaco Exploration and Production Inc.	
COOPER JAL UNIT	
LEA COUNTY, NEW MEXICO	
WELL LOCATIONS	
20	1/4

RECEIVED

7/3/15