

DISTRICT I
P. O. Box 1980, Hobbs, NM 88240

DISTRICT II
P. O. Drawer DD, Artesia, NM 88210

DISTRICT III
1000 Rio Brazos Rd., Aztec, NM 87410

DISTRICT IV
P. O. Box 2088, Santa Fe, NM 87504-2088

State of New Mexico
Energy, Minerals and Natural Resources Department

OIL CONSERVATION DIVISION
PO Box 2088
Santa Fe, NM 87504-2088

Form C-102
Revised February 10, 1994

Instructions on back

Submit to Appropriate District Office

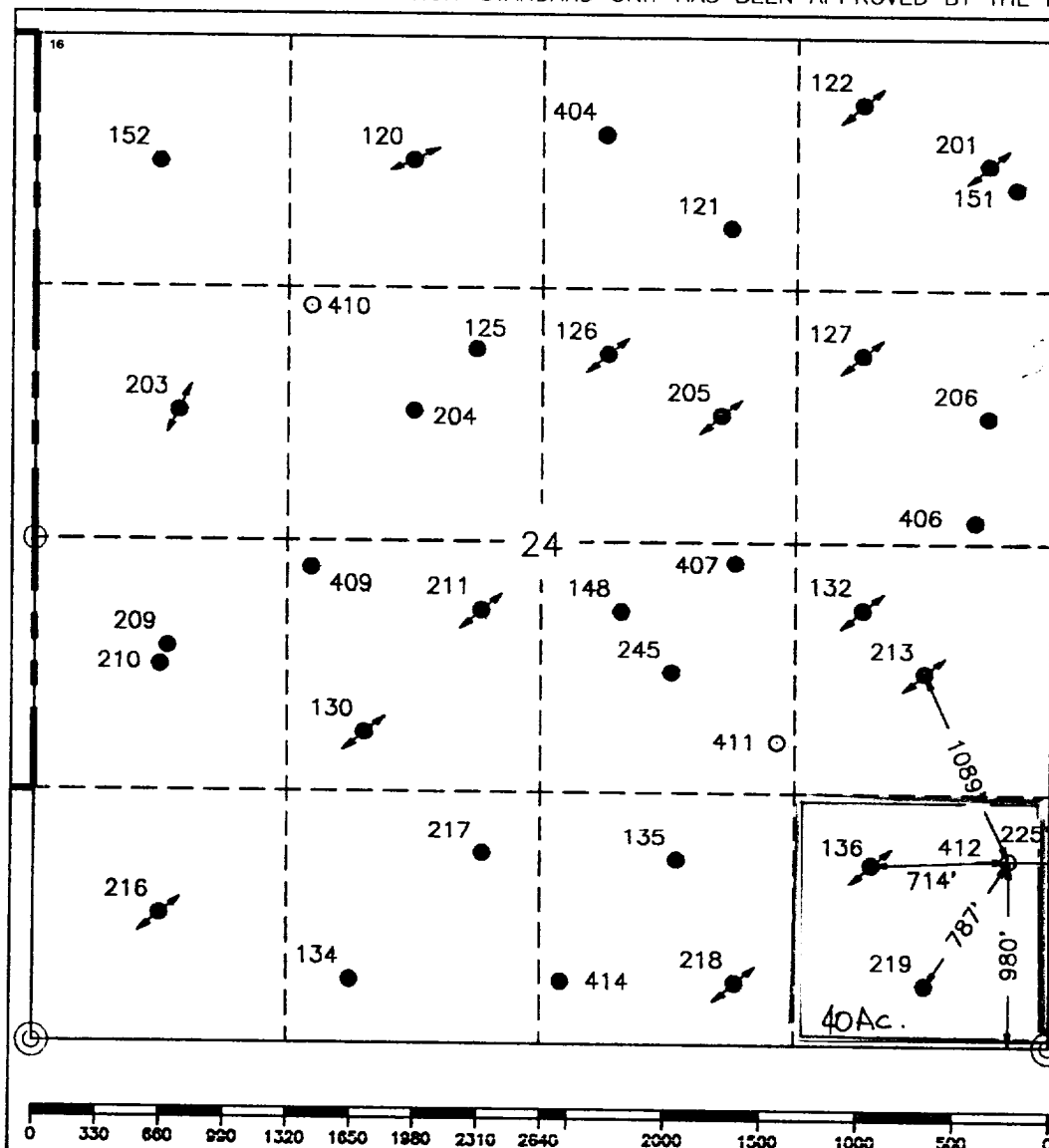
State Lease-4 copies
Fee Lease-3 copies

WELL LOCATION AND ACREAGE DEDICATION PLAT

☐ AMENDED REPORT

¹ API Number 30-025-32892		² Pool Code 37240; 33820		³ Pool Name Jalmat; Langlie Mattix					
⁴ Property Code 10917		⁵ Property Name COOPER JAL UNIT			⁶ Well Number 412				
⁷ OCRID No. 22351		⁸ Operator Name TEXACO EXPLORATION & PRODUCTION, INC.			⁹ Elevation 3295				
¹⁰ Surface Location									
UL or lot no. P	Section 24	Township 24-S	Range 36-E	Lot Idn	Feet from the 980'	North/South line South	Feet from the 225'	East/West line East	⁷ County Lea
¹¹ Bottom Hole Location If Different From Surface									
UL or lot no.	Section	Township	Range	Lot Idn	Feet from the	North/South line	Feet from the	East/West line	⁷ County
¹² Dedicated Acres 40		¹³ Joint or Infill		¹⁴ Consolidation Code		¹⁵ Order No.			

NO ALLOWABLE WILL BE ASSIGNED TO THIS COMPLETION UNTIL ALL INTERESTS HAVE BEEN CONSOLIDATED
OR A NON-STANDARD UNIT HAS BEEN APPROVED BY THE DIVISION.



¹⁷ OPERATOR CERTIFICATION I hereby certify that the information contained herein is true and complete to the best of my knowledge and belief.	
Signature <i>C. Wade Howard</i>	
Printed Name C. Wade Howard	
Position Engineer Technician	
Company Texaco Expl. & Prod. Inc.	
Date January 30, 1995	
¹⁸ SURVEYOR CERTIFICATION I hereby certify that the well location shown on this plat was plotted from field notes of actual surveys made by me or under my supervision, and that the same is true and correct to the best of my knowledge and belief.	
Date Surveyed January 19, 1995	
Signature & Seal of Professional Surveyor <i>John S. Piper</i>	
Certificate No. 7254 John S. Piper	
Sheet Sheet 8 of 8	

○ = Staked Location ● = Producing Well ↗ = Injection Well ◇ = Water Supply Well ✖ = Plugged & Abandon Well
⊙ = Found Section Corner, 2 or 3" Iron Pipe & GLO B.C. ○ = Found 1/4 Section Corner, 1" Iron Pipe & GLO B.C.

RECEIVED

MAR 17 1995

OOD HOBBS
OFFICE

OPERATOR - LANDOWNER AGREEMENT

COMPANY:

TEXACO EXPLORATION AND PRODUCTION INC.

PROPOSED WELL:

COOPER JAL UNIT No. 412

FEDERAL LEASE NUMBER:

LC - 063965

This is to advise that Texaco Exploration and Production Inc. has an agreement with:

FRED B. COOPER, RR 1, Box 141, Blossom, TX 75416,

the surface owner, concerning entry and surface restoration after completion of drilling operations at the above described well.

After abandonment of the well, all pits will be filled and levelled, and all equipment and trash will be removed from the well site. No other requirements were made concerning restoration of the well site.

Date

2-7-95

C. Wade Howard
C. W. Howard
Engineer's Assistant
Midland, Texas

DRILLING PROGRAM

COOPER JAL UNIT WELL No. 412

SURFACE DESCRIPTION:

See Item 11 (other information) in the attached Surface Use and Operations Plan.

FORMATION TOPS: Estimated KB Elevation: 3305'

<u>Formation</u>	<u>Depth</u>	<u>Lithology</u>	<u>Fluid Content</u>
Ogallala	350'	Red Bed	----
Rustler	1120'	Anhy, Salt	----
Salado	1500'	Anhy, Salt	----
Tansill	2840'	Anhy, Dolo	----
Yates	3000'	Sandstone, Dolo	Oil
Seven Rivers	3220'	Sandstone, Dolo	Oil
Queen	3630'	Sandstone, Dolo	Oil

The base of the salt section is the base of the Salado at 2840'. No abnormal pressures or temperatures are anticipated to be encountered in this well. H₂S is present in the Yates and Seven Rivers. H₂S RADIUS OF EXPOSURE: 100ppm = 3', 500ppm = 1.3', based on 50ppm H₂S and 71 MCF (see attached H₂S Drilling Operations Plan. H₂S equipment to be operational prior to drilling out Surface Casing Shoe.)

PRESSURE CONTROL EQUIPMENT:

A 3000 psi Dual Ram type preventer with rotating head will be used. (See Exhibit C). We do not plan to have an annular preventer. We will be able to achieve full closure of the well with the double ram preventer. It will be installed after surface casing is set. BOP will be tested each time it is installed on a casing string and at least every 29 days, and operated at least once each 24-hour period during drilling.

A PVT system will not be installed. We will be drilling thru the reserve pit and will circulate the steel pits one hour each tour to check for gains and losses and will be noted on the driller's log, which is Texaco's policy.

We do not plan to run an automatic remote-controlled choke. We will have installed and tested two manual, H₂S trimmed, chokes.

CASING AND CEMENT PROGRAM:

The casing and cementing programs are detailed on Form 3160-3. All casing will be new.

Centralizer Program:

Surface Casing - Centralize the bottom 3 joints and every 4th to surface.

Production Casing - Centralize every other joint on bottom 800'.

MUD PROGRAM:

<u>Depth</u>	<u>Type</u>	<u>Weight</u>	<u>Viscosity</u>
0'-400'	Fresh Water	8.4	28
400'-3800'	Brine	10.0	29
Across Pay	Starch	10.0	32

Bottom Hole Pressure at T.D. estimated to be 6.0 PPG EMW.

LOGGING, TESTING:

GR-CNL-LDT, GR-DLL-MSFL, and GR-BHC-Sonic surveys will be run.

No Mud Logging Unit will be used.

No drill stem tests will be conducted.

No cores will be taken.

RECEIVED

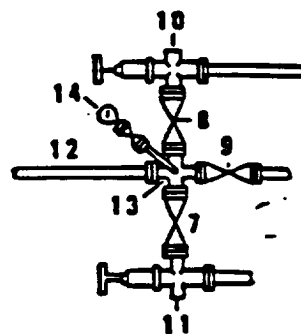
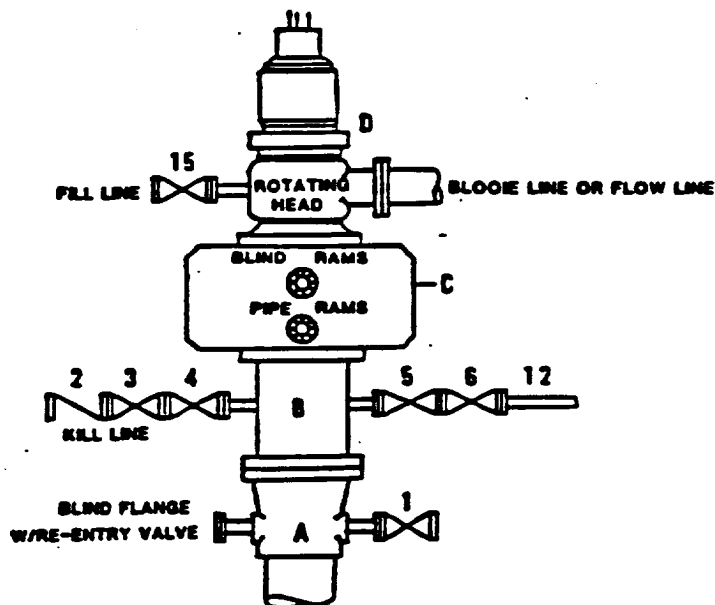
1950

THE HOBBY
OFFICE

DRILLING CONTROL CONDITION II-B 3000 WP

**FOR AIR DRILLING OR
WHERE NITROGEN OR AIR BLOWS ARE EXPECTED**

H₂S TRIM REQUIRED
YES X NO



DRILLING CONTROL

MATERIAL LIST - CONDITION II - B

- | | |
|----------------|---|
| A | Texaco Wellhead |
| B | 3000# W.P. drilling spool with a 2" minimum flanged outlet for kill line and 3" minimum flanged outlet for choke line. |
| C | 3000# W.P. Dual ram type preventer, hydraulic operated with 1" steel, 3000# W.P. control lines (where sub-structure height is adequate, 2 - 3000# W.P. single ram type preventers may be utilized). |
| D | Rotating Head with fill up outlet and extended Blooe Line. |
| 1,3,4,
7,8. | 2" minimum 3000# W.P. flanged full opening steel gate valve, or Malliburton Lo Torc Plug valve. |
| 2 | 2" minimum 3000# W.P. back pressure valve. |
| 5,6,9 | 3" minimum 3000# W.P. flanged full opening steel gate valve, or Malliburton Lo Torc Plug valve. |
| 12 | 3" minimum schedule 80, Grade "B", seamless line pipe. |
| 13 | 2" minimum x 3" minimum 3000# W.P. flanged cross. |
| 10,11 | 2" minimum 3000# W.P. adjustable choke bodies. |
| 14 | Cameron Mud Gauge or equivalent (location optional in choke line). |
| 15 | 2" minimum 3000# W.P. flanged or threaded full opening steel gate valve, or Malliburton Lo Torc Plug valve. |



TEXACO, INC.
MIDLAND DIVISION
MIDLAND, TEXAS



SCALE	DATE	EST NO	DRG NO
DRAWN BY			
CHECKED BY			
APPROVED BY			

EXHIBIT C

6 30 75

114

RECEIVED

MAR 17 1995

U.S. DEPT. OF JUSTICE
HOBBS
OFFICE

OPER. OGRID NO. 22351PROPERTY NO. 10917POOL CODE 37240EFF. DATE 3/20/95API NO. 30-025-32892

Form 3180-3

(December 1990)

SUBMIT IN TRIPLICATE

UNIT
DEPARTMENT
BUREAU OF L

FORM APPROVED

Budget Bureau No. 1004-0136

Expires: December 31, 1991

APPLICATION FOR PERMIT TO DRILL OR DEEPEN

1a. Type of Work DRILL ☒ DEEPEN ☐
1b. Type of Well
OIL WELL ☒ GAS WELL ☐ OTHER ☐
SINGLE ZONE ☐
MULTIPLE ZONE ☒

2. Name of Operator
TEXACO EXPLORATION & PRODUCTION INC.3. Address and Telephone No.
P.O. Box 3109, Midland Texas 79702 688-4606

4. Location of Well (Report location clearly and in accordance with any State requirements.)
At Surface UNORTHODOX LOCATION: Subject to
Unit Letter P : 980 Feet From The SOUTH Line and 225 Feet From The EAST Line Like Approval
At proposed prod. zone By State
SAME

14. Distance in Miles and Direction from Nearest Town or Post Office*
7 MILES NW OF JAL, NM

15. Distance From Proposed* Location to Nearest Property or Lease Line, Ft. (also to nearest drg. unit line, if any) 2784'

16. No. of Acres in Lease 2581

18. Distance From Proposed Location* to Nearest Well, Drilling, Completed or Applied For, On This Lease, Ft. 714'

19. Proposed Depth 3800'

21. Elevations (Show whether DF, RT, GR, etc.)

GR-3295'

Capitan Controlled Water Basin

22. Approx. Date Work Will Start*
4/1/95

23. PROPOSED CASING AND CEMENT PROGRAM

SIZE OF HOLE	GRADE, SIZE OF CASING	WEIGHT PER FOOT	SETTING DEPTH	QUANTITY OF CEMENT
12 1/4	WC50, 8 5/8	24#	400'	250 SACKS - CIRCULATE
7 7/8	WC-50, 5 1/2	15.5#	3800'	850 SACKS - CIRCULATE

CEMENTING PROGRAM:

SURFACE CASING - 250 SACKS CLASS C w/ 2% CACL2 (14.8 PPG, 1.34 CF/S, 6.31 GW/S).

PRODUCTION CASING - 500 SACKS 35/65 POZ H w/ 6% GEL, 5% SALT, 1/4# FLOCELE (12.8 PPG, 1.94 CF/S, 10.4 GW/S). F/B 350 SACKS CLASS H (15.6 PPG, 1.18 CF/S, 5.2 GW/S).

THERE ARE NO OTHER OPERATORS IN THIS QUARTER QUARTER SECTION.

REQUEST TO DOWN-HOLE COMMINGLE THE JALMAT AND LANGLEIE MATTIX WILL BE FILED.

UNORTHODOX LOCATION: EXCEPTION HAS BEEN APPLIED FOR. (SEE ATTACHED LETTER.)

Approved Subject to
General Requirements and
Special Stipulations
Attached
N/SL-348D

In Above Space Describe Proposed Program: If proposal is to deepen, give data on present productive zone and proposed new productive zone. If proposal is to drill or deepen directionally, give pertinent data on subsurface locations and measured true verticle depths. Give blowout preventer program, if any.

24. I hereby certify that the foregoing is true and correct

SIGNATURE C. Wade Howard TITLE Eng. Assistant

DATE 2/7/95

TYPE OR PRINT NAME C. Wade Howard

(This space for Federal or State office use)

PERMIT NO. APPROVAL DATE

Application approval does not warrant or certify that the applicant holds legal or equitable title to those rights in the subject lease which would entitle the applicant to conduct operations thereon.

APPROVED BY Timothy P. O'Brien

TITLE Acting AREA MANAGER

DATE 3-13-95

CONDITIONS OF APPROVAL, IF ANY:

Title 18 U.S.C. Section 1001, makes it a crime for any person knowingly and willfully to make to any department or agency of the United States any false, fictitious or fraudulent statements or representations as to any matter within its jurisdiction.

RECEIVED

MAR 17 1995

**JOHN ROBB
OFFICE**