

DISTRICT I

P.O. Box 1980, Hobbs, NM 88241-1980

DISTRICT II

P.O. Box Drawer DD, Artesia, NM 88211-0719

DISTRICT III

1000 Rio Brazos Rd., Aztec, NM 87410

DISTRICT IV

P.O. Box 2088, Santa Fe, NM 87504-2088

State of New Mexico

Energy, Minerals and Natural Resources Department

Form U-101

Revised February 10, 1994

Instructions on back

Submit to Appropriate District Office

State Lease - 6 Copies

Fee Lease - 5 Copies

☐ AMENDED REPORT

OIL CONSERVATION DIVISION

P.O. Box 2088

Santa Fe, New Mexico 87504-2088

APPLICATION FOR PERMIT TO DRILL, RE-ENTER, DEEPEN, PLUGBACK, OR ADD A ZONE

¹ Operator Name and Address TEXACO EXPLORATION & PRODUCTION INC. P.O. Box 3109, Midland Texas 79702		² OGRID Number 022351
		³ API Number 30-025-33056
⁴ Property Code 11371	⁵ Property Name TEAGUE 'Z' STATE	⁶ Well No. 1

⁷ Surface Location

UI or lot no.	Section	Township	Range	Lot.Idn	Feet From The	North/South Line	Feet From The	East/West Line	County
D	2	24-S	37-E		330	NORTH	475	WEST	LEA

⁸ Proposed Bottom Hole Location If Different From Surface

UI or lot no.	Section	Township	Range	Lot.Idn	Feet From The	North/South Line	Feet From The	East/West Line	County
⁹ Proposed Pool 1 TEAGUE SIMPSON					¹⁰ Proposed Pool 2 TEAGUE ELLENBURGER; FUSSELMAN; DEVONIAN				

¹¹ Work Type Code N	¹² WellType Code O	¹³ Rotary or C.T. ROTARY	¹⁴ Lease Type Code S	¹⁵ Ground Level Elevation 3229'
¹⁶ Multiple No	¹⁷ Proposed Depth 10300'	¹⁸ Formation SIMPSON; FUSLM	¹⁹ Contractor NABORS	²⁰ Spud Date 8/20/95

²¹ Proposed Casing and Cement Program

SIZE OF HOLE	SIZE OF CASING	WEIGHT PER FOOT	SETTING DEPTH	SACKS OF CEMENT	EST. TOP
14 3/4	11 3/4	42#	350'	300 SACKS	SURFACE
11	8 5/8	32#	3000'	700 SACKS	SURFACE
7 7/8	5 1/2	17#	10300'	2750 SACKS	2000'

22 Describe the proposed program. If this application is to DEEPEN or PLUG BACK give the data on the present productive zone and proposed new productive zone.
Describe the blowout prevention program, if any. Use additional sheets if necessary.

CEMENTING PROGRAM:

SURFACE CASING: 300 SACKS CLASS C (14.8 PPG, 1.34 CF/S, 6.31 GW/S).

INTERMEDIATE CASING: 500 SACKS 35/65 POZ H w/ 6% GEL, 5% SALT, 1/4# FC (12.8 PPG, 1.94 CF/S, 10.4 GW/S). F/B 200 SACKS CLASS C (14.8 PPG, 1.32 CF/S, 6.3 GW/S).

PRODUCTION CASING: 1st STG - 1350 SACKS 50/50 POZ H w/ 2% GEL, 5% SALT, 1/4# FC (14.2 PPG, 1.35 CF/S, 6.3 GW/S).

DV TOOL @ 7000': 2nd STG - 550 SACKS 35/65 POZ H w/ 6% GEL, 5% SALT, 1/4# FC (12.8 PPG, 1.94 CF/S, 10.4 GW/S). F/B 850 SACKS 50/50 POZ CLASS H w/ 2% GEL, 5% SALT, 1/4# FC (14.2 PPG, 1.35 CF/S, 6.3 GW/S).

OXY OPERATES A WELL IN THIS QUARTER QUARTER SECTION AND HAS BEEN FURNISHED A COPY OF THIS APPLICATION.

23 I hereby certify that the rules and regulations of the Oil Conservation Division have been complied with and that the information given above is true and complete to the best of my knowledge and belief.

Signature

C. Wade Howard

Printed Name C. Wade Howard

Title Eng. Assistant

Date 8/9/95

Telephone 688-4606

OIL CONSERVATION DIVISION

Approved By:

Title:

Approval Date AUG 16 1995

Expiration Date:

Conditions of Approval:

Attached ☐

DISTRICT I
P. O. Box 1980, Hobbs, NM 88240

DISTRICT II
P. O. Drawer DD, Artesia, NM 88210

DISTRICT III
1000 Rio Brazos Rd., Aztec, NM 87410

DISTRICT IV
P. O. Box 2088, Santa Fe, NM 87504-2088

State of New Mexico
Energy, Minerals and Natural Resources Department

OIL CONSERVATION DIVISION

PO Box 2088
Santa Fe, NM 87504-2088

Form C-102
Revised February 10, 1994

Instructions on back

Submit to Appropriate District Office

State Lease-4 copies
Fee Lease-3 copies

☐ AMENDED REPORT

WELL LOCATION AND ACREAGE DEDICATION PLAT

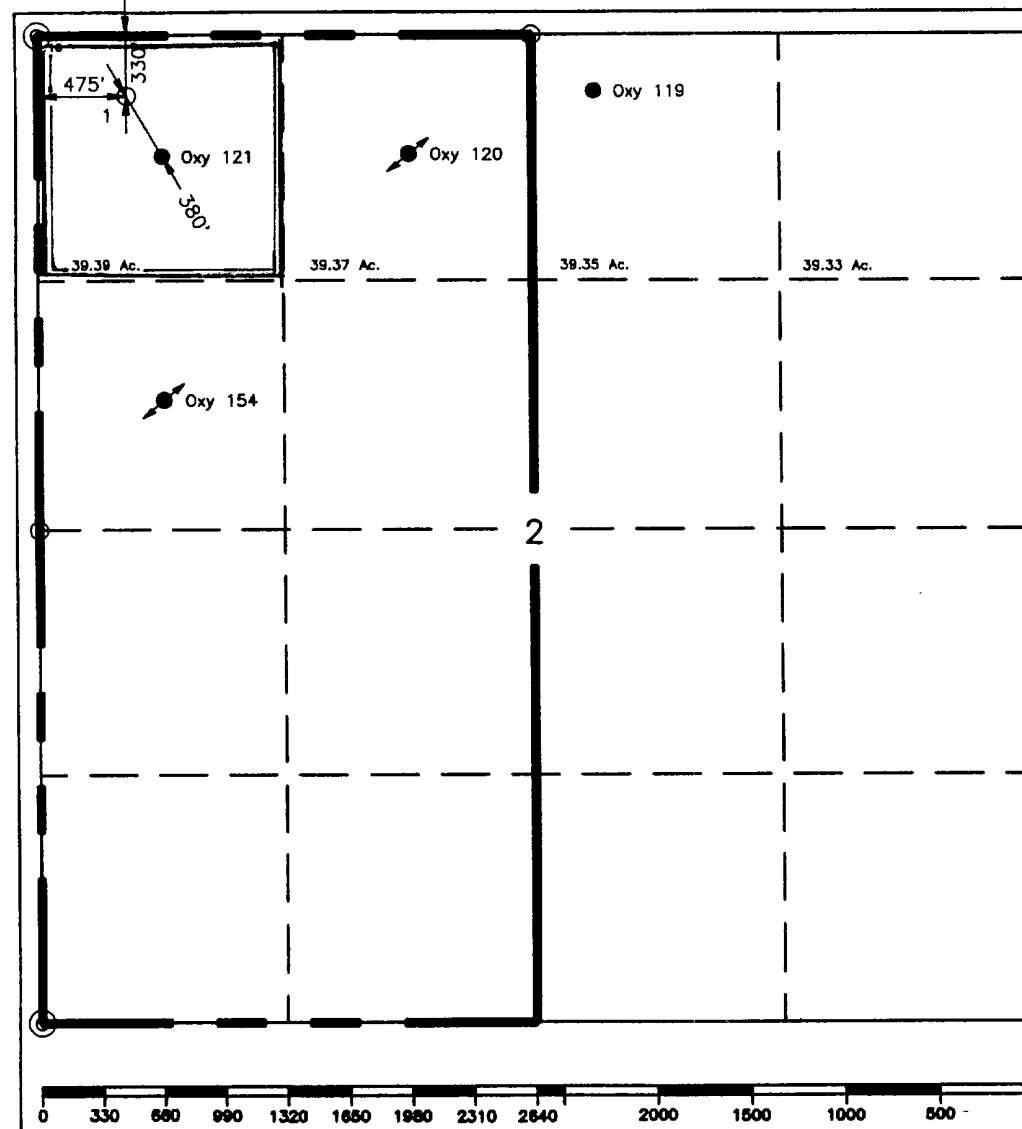
¹ API Number 30-025-33056		² Pool Code 58520		³ Pool Name Teague	
⁴ Property Code 17371		⁵ Property Name Teague 2 State			⁶ Well Number 1
⁷ GRID No. 22351		⁸ Operator Name TEXACO EXPLORATION & PRODUCTION, INC.			⁹ Elevation 3229'

¹⁰ Surface Location									
UL or lot no.	Section	Township	Range	Lot Idn	Feet from the	North/South line	Feet from the	East/West line	⁷ County
D	2	24-S	37-E		330'	North	475'	West	Lea

¹¹ Bottom Hole Location If Different From Surface									
UL or lot no.	Section	Township	Range	Lot Idn	Feet from the	North/South line	Feet from the	East/West line	⁷ County

¹² Dedicated Acres 39.39	¹³ Joint or Infill	¹⁴ Consolidation Code	¹⁵ Order No.
--	-------------------------------	----------------------------------	-------------------------

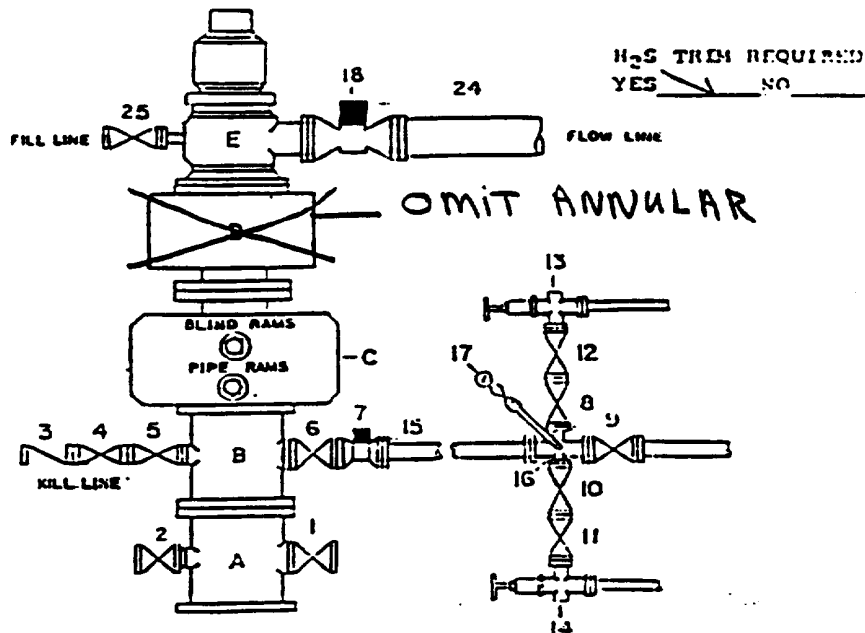
NO ALLOWABLE WILL BE ASSIGNED TO THIS COMPLETION UNTIL ALL INTERESTS HAVE BEEN CONSOLIDATED
OR A NON-STANDARD UNIT HAS BEEN APPROVED BY THE DIVISION.



¹⁶ OPERATOR CERTIFICATION	
I hereby certify that the information contained herein is true and complete to the best of my knowledge and belief.	
Signature	<i>C. Wade Howard</i>
Printed Name	C. Wade Howard
Position	Engineer's Assistant
Company	Texaco Expl. & Prod. Inc.
Date	August 9, 1995
¹⁷ SURVEYOR CERTIFICATION	
I hereby certify that the well location shown on this plat was plotted from field notes of actual surveys made by me or under my supervision, and that the same is true and correct to the best of my knowledge and belief.	
Date Surveyed	August 4, 1995
Signature & Seal of Professional Surveyor	<i>John S. Piper</i>
Certificate No.	7254 John S. Piper
Sheet	

○ = Staked Location ● = Producing Well = Injection Well = Water Supply Well = Plugged & Abandon Well

DRILLING CONTROL
CONDITION IV-B-5000 PSI WP



DRILLING CONTROL

MATERIAL LIST - CONDITION IV - B

- | | |
|----------------------|--|
| A | Texaco Wellhead. |
| B | 5000# W.P. drilling spool with a minimum 2" flanged outlet for kill line and 3" minimum flanged outlet for choke line. |
| C | 5000# W.P. Dual ram type preventer, hydraulic operated with 1" steel, 5000# W.P. control lines. |
| D | 5000# W.P. Annular preventer, hydraulic operated with 1" steel, 5000# W.P. control lines. |
| E | Rotating Head with fill up outlet and extended Bleeds line. |
| 1,2,4,5, 8,10,11, 12 | 2" minimum 5000# W.P. flanged full opening steel gate valve, or Halliburton Lo Torc Plug Valve. |
| 1 | 2" minimum 5000# W.P. back pressure valve. |
| 6,9 | 3" minimum 5000# W.P. flanged full opening steel gate valve, or Halliburton Lo Torc Plug Valve. |
| 7 | 3" minimum 5000# W.P. flanged hydraulic valve |
| 15 | 3" minimum Schedule 160, Grade B, seamless line pipe |
| 16 | 2" minimum x 3" 5000# W.P. flanged cross |
| 13,14 | 2" minimum 5000# W.P. adjustable chokes with carbide trim. |
| 17 | Cameron Mud Gauge or equivalent (location in choke line optional). |
| 18 | 6" minimum 1000# hydraulic flanged valve. |
| 24 | 6" minimum steel flow line. |
| 25 | 2" minimum 5000# W.P. flanged or threaded full opening steel gate valve, or Halliburton Lo Torc Plug Valve. |



TEXACO, INC.

HOUSTON, TEXAS
WILLIAM C. BAKER

