

DISTRICT I  
P. O. Box 1980, Hobbs, NM 88240

DISTRICT II  
P. O. Drawer DD, Artesia, NM 88210

DISTRICT III  
1000 Rio Brazos Rd., Aztec, NM 87410

DISTRICT IV  
P. O. Box 2088, Santa Fe, NM 87504-2088

State of New Mexico  
Energy, Minerals and Natural Resources Department

OIL CONSERVATION DIVISION

PO Box 2088  
Santa Fe, NM 87504-2088

Form C-102  
Revised February 10, 1994

Instructions on back

Submit to Appropriate District Office

State Lease-4 copies  
Fee Lease-3 copies

☐ AMENDED REPORT

WELL LOCATION AND ACREAGE DEDICATION PLAT

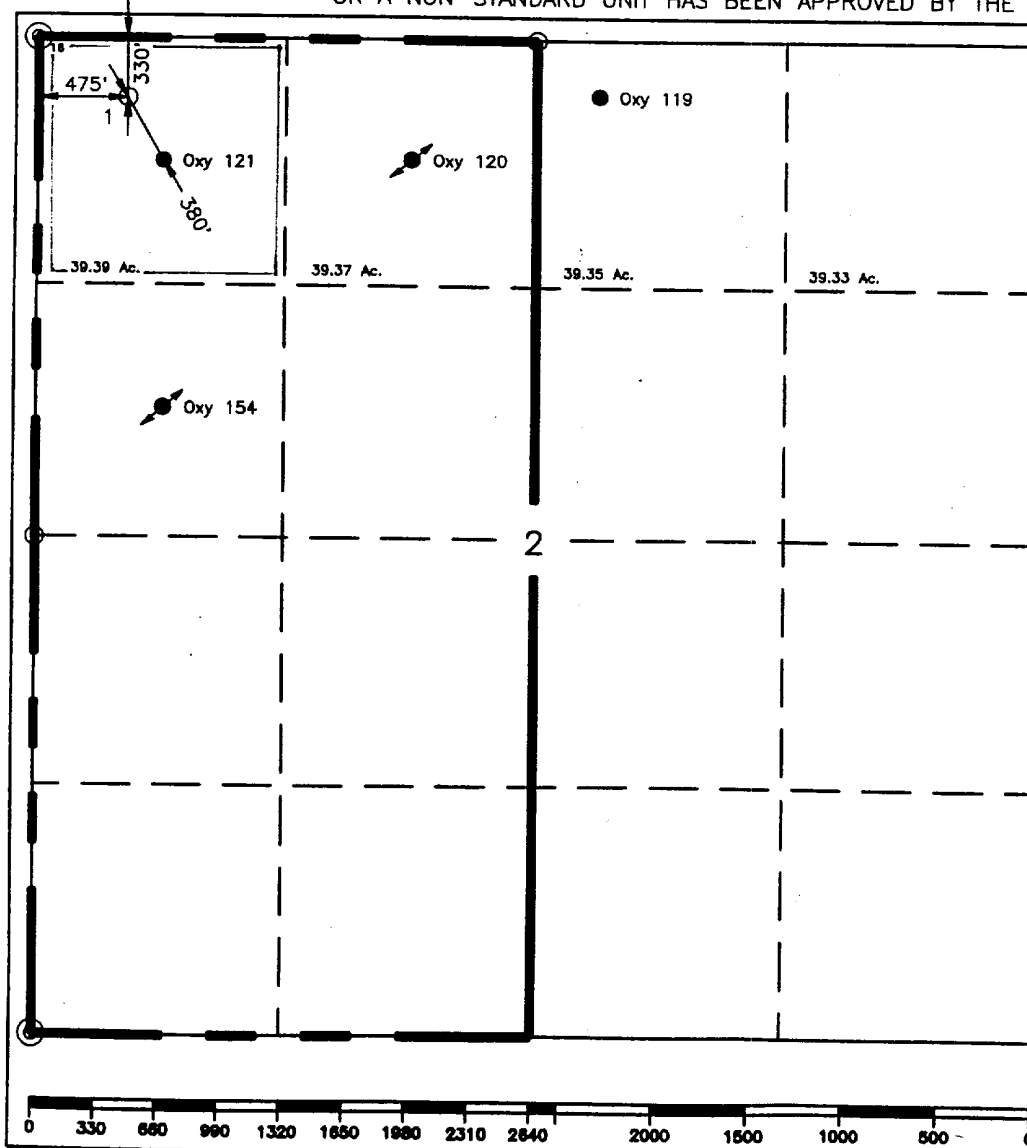
<sup>1</sup> API Number		<sup>2</sup> Pool Code 58580	<sup>3</sup> Pool Name <u>Teague</u> <del>Simpson McKee Sand; Tubb; Siturian; Fusselman; Ellenburger</del>	
<sup>4</sup> Property Code 12371	<sup>5</sup> Property Name Teague 2 State			<sup>6</sup> Well Number 1
<sup>7</sup> GRID No. 22351	<sup>8</sup> Operator Name TEXACO EXPLORATION & PRODUCTION, INC.			<sup>9</sup> Elevation 3229'

<sup>10</sup> Surface Location									
UL or lot no. D	Section 2	Township 24-S	Range 37-E	Lot Idn	Feet from the 330'	North/South line North	Feet from the 475'	East/West line West	<sup>7</sup> County Lea

<sup>11</sup> Bottom Hole Location if Different From Surface									
UL or lot no.	Section	Township	Range	Lot Idn	Feet from the	North/South line	Feet from the	East/West line	<sup>7</sup> County

<sup>12</sup> Dedicated Acres 39.39	<sup>13</sup> Joint or Infill	<sup>14</sup> Consolidation Code	<sup>15</sup> Order No.
--	-------------------------------	----------------------------------	-------------------------

NO ALLOWABLE WILL BE ASSIGNED TO THIS COMPLETION UNTIL ALL INTERESTS HAVE BEEN CONSOLIDATED  
OR A NON-STANDARD UNIT HAS BEEN APPROVED BY THE DIVISION.



<sup>1</sup> OPERATOR CERTIFICATION	
I hereby certify that the information contained herein is true and complete to the best of my knowledge and belief.	
Signature	<u>C. Wade Howard</u>
Printed Name	C. Wade Howard
Position	Engineer's Assistant
Company	Texaco Expl. & Prod. Inc.
Date	August 9, 1995
<sup>16</sup> SURVEYOR CERTIFICATION	
I hereby certify that the well location shown on this plat was plotted from field notes of actual surveys made by me or under my supervision, and that the same is true and correct to the best of my knowledge and belief.	
Date Surveyed	August 4, 1995
Signature & Seal of Professional Surveyor	<u>John S. Piper</u>
Certificate No.	7254 John S. Piper
Sheet	

○ = Staked Location ● = Producing Well — = Injection Well — = Water Supply Well — = Plugged & Abandon Well

DISTRICT I  
P. O. Box 1980, Hobbs, NM 88240

DISTRICT II  
P. O. Drawer DD, Artesia, NM 88210

DISTRICT III  
1000 Rio Brazos Rd., Aztec, NM 87410

DISTRICT IV  
P. O. Box 2088, Santa Fe, NM 87504-2088

State of New Mexico  
Energy, Minerals and Natural Resources Department

Form C-102  
Revised February 10, 1994

OIL CONSERVATION DIVISION  
PO Box 2088  
Santa Fe, NM 87504-2088

Instructions on back

Submit to Appropriate District Office

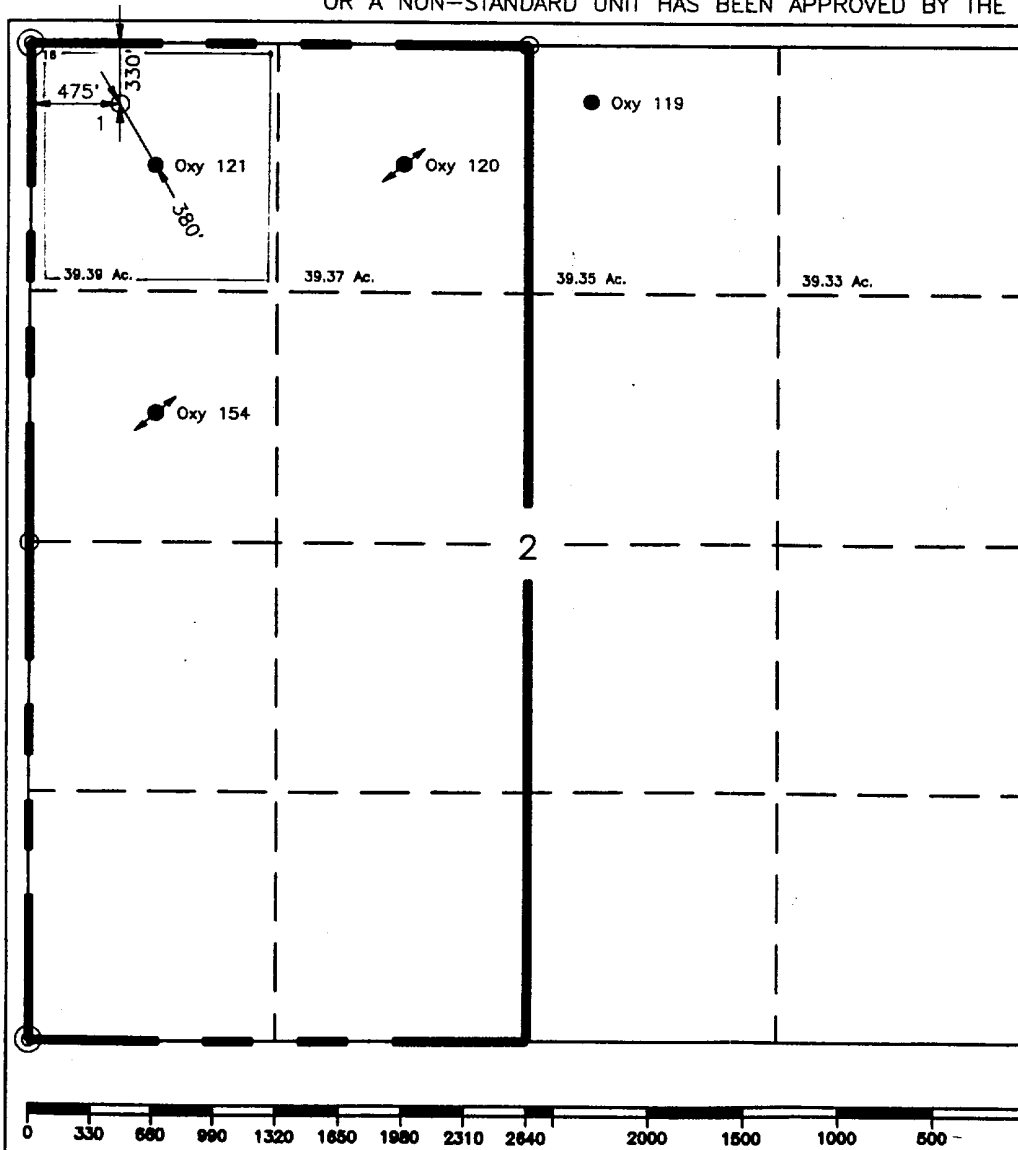
State Lease-4 copies  
Fee Lease-3 copies

WELL LOCATION AND ACREAGE DEDICATION PLAT

☐ AMENDED REPORT

1 API Number		2 Pool Code 5833D		3 Pool Name Teague Devonian <del>Simpson McKee Sand; Tubb; Silurian; Fusselman; Ellenburger</del>	
4 Property Code 12371		5 Property Name Teague 2 State			6 Well Number 1
7 GRID No. 22351		8 Operator Name TEXACO EXPLORATION & PRODUCTION, INC.			9 Elevation 3229'
10 Surface Location					
UL or lot no. D	Section 2	Township 24-S	Range 37-E	Lot Idn	Feet from the 330'
		North/South line North		Feet from the 475'	East/West line West
				7 County Lea	
11 Bottom Hole Location If Different From Surface					
UL or lot no.	Section	Township	Range	Lot Idn	Feet from the
		North/South line		Feet from the	East/West line
				7 County	
12 Dedicated Acres 39.39		13 Joint or Infill		14 Consolidation Code	
				15 Order No.	

NO ALLOWABLE WILL BE ASSIGNED TO THIS COMPLETION UNTIL ALL INTERESTS HAVE BEEN CONSOLIDATED  
OR A NON-STANDARD UNIT HAS BEEN APPROVED BY THE DIVISION.



16 OPERATOR CERTIFICATION	
I hereby certify that the information contained herein is true and complete to the best of my knowledge and belief.	
Signature <i>C. Wade Howard</i>	
Printed Name C. Wade Howard	
Position Engineer's Assistant	
Company Texaco Expl. & Prod. Inc.	
Date August 9, 1995	
17 SURVEYOR CERTIFICATION	
I hereby certify that the well location shown on this plat was plotted from field notes of actual surveys made by me or under my supervision, and that the same is true and correct to the best of my knowledge and belief.	
Date Surveyed August 4, 1995	
Signature & Seal of Professional Surveyor <i>John S. Piper</i>	
Certificate No. 7254 John S. Piper	
Sheet	

○ = Staked Location    ● = Producing Well    = Injection Well    = Water Supply Well    ● = Plugged & Abandon Well

DISTRICT I  
P. O. Box 1980, Hobbs, NM 88240

DISTRICT II  
P. O. Drawer DD, Artesia, NM 88210

DISTRICT III  
1000 Rio Brazos Rd., Aztec, NM 87410

DISTRICT IV  
P. O. Box 2088, Santa Fe, NM 87504-2088

State of New Mexico  
Energy, Minerals and Natural Resources Department

Form C-102  
Revised February 10, 1994

Instructions on back

OIL CONSERVATION DIVISION

PO Box 2088  
Santa Fe, NM 87504-2088

Submit to Appropriate District Office

State Lease-4 copies  
Fee Lease-3 copies

☐ AMENDED REPORT

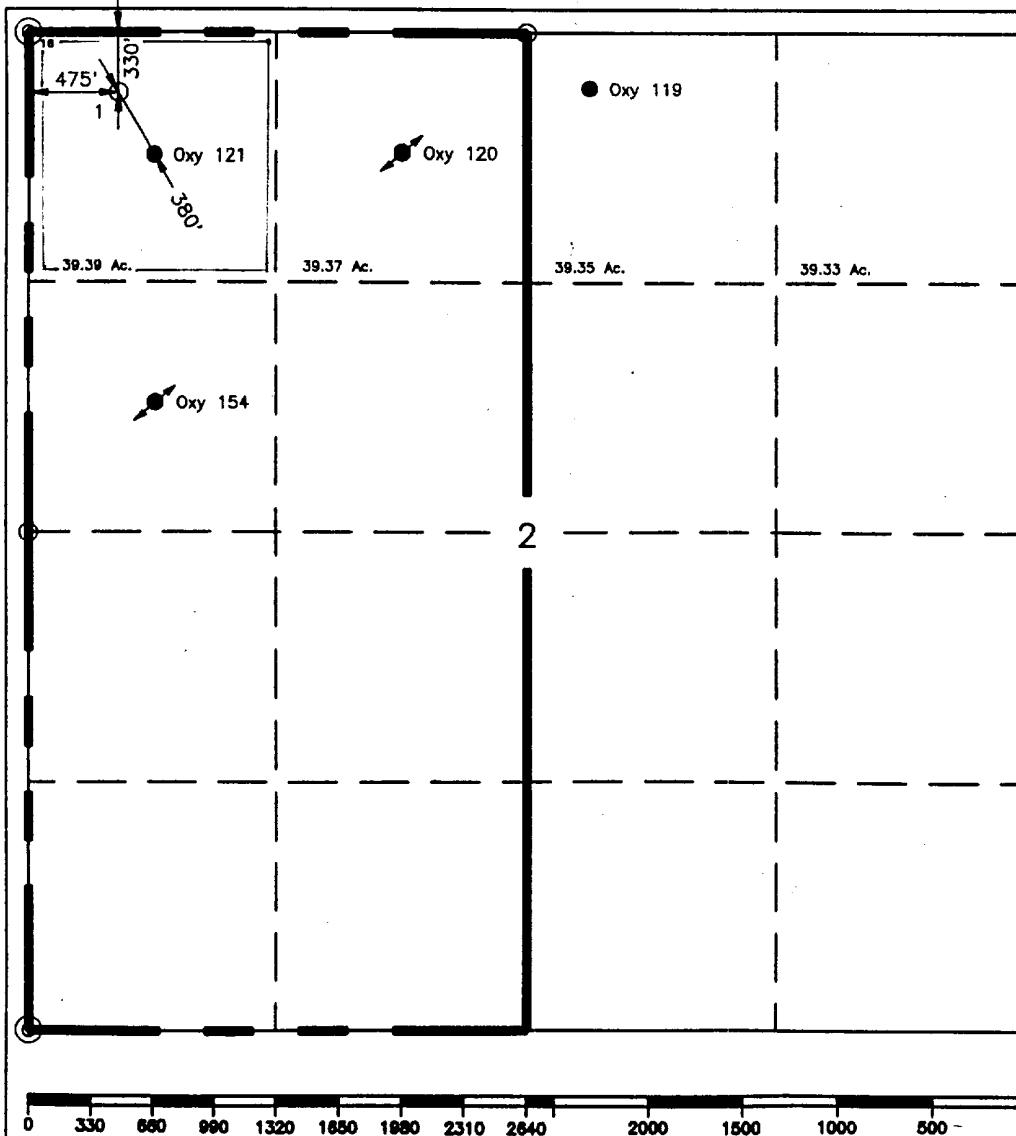
WELL LOCATION AND ACREAGE DEDICATION PLAT

<sup>1</sup> API Number		<sup>2</sup> Pool Code		<sup>3</sup> Pool Name	
				Simpson McKee Sand; Tubb; Silurian; Fusselman; Ellenburger	
<sup>4</sup> Property Code		<sup>5</sup> Property Name			<sup>6</sup> Well Number
12371		Teague 2 State			1
<sup>7</sup> OGRID No.		<sup>8</sup> Operator Name			<sup>9</sup> Elevation
22351		TEXACO EXPLORATION & PRODUCTION, INC.			3229'

<sup>10</sup> Surface Location									
UL or lot no.	Section	Township	Range	Lot Idn	Feet from the	North/South line	Feet from the	East/West line	<sup>7</sup> County
D	2	24-S	37-E		330'	North	475'	West	Lea

<sup>11</sup> Bottom Hole Location If Different From Surface									
UL or lot no.	Section	Township	Range	Lot Idn	Feet from the	North/South line	Feet from the	East/West line	<sup>7</sup> County
<sup>12</sup> Dedicated Acres		<sup>13</sup> Joint or Infill		<sup>14</sup> Consolidation Code		<sup>15</sup> Order No.			
39.39									

NO ALLOWABLE WILL BE ASSIGNED TO THIS COMPLETION UNTIL ALL INTERESTS HAVE BEEN CONSOLIDATED  
OR A NON-STANDARD UNIT HAS BEEN APPROVED BY THE DIVISION.



<sup>16</sup> OPERATOR CERTIFICATION	
I hereby certify that the information contained herein is true and complete to the best of my knowledge and belief.	
Signature	
<i>C. Wade Howard</i>	
Printed Name	
C. Wade Howard	
Position	
Engineer's Assistant	
Company	
Texaco Expl. & Prod. Inc.	
Date	
August 9, 1995	
<sup>18</sup> SURVEYOR CERTIFICATION	
I hereby certify that the well location shown on this plat was plotted from field notes of actual surveys made by me or under my supervision, and that the same is true and correct to the best of my knowledge and belief.	
Date Surveyed	
August 4, 1995	
Signature & Seal of Professional Surveyor	
<i>John S. Piper</i>	
Certificate No.	
7254 John S. Piper	
Sheet	

○ - Staked Location • = Producing Well = Injection Well = Water Supply Well = Plugged & Abandon Well