

**DISTRICT I**

P.O. Box 1980, Hobbs, NM 88241-1980

**DISTRICT II**

P.O. Box Drawer DD, Artesia, NM 88211-0719

**DISTRICT III**

1000 Rio Brazos Rd., Aztec, NM 87410

**DISTRICT IV**

P.O. Box 2088, Santa Fe, NM 87504-2088

**State of New Mexico**

Energy, Minerals and Natural Resources Department

**OIL CONSERVATION DIVISION**

P.O. Box 2088

Santa Fe, New Mexico 87504-2088

Form C-101

Revised February 10, 1994

Instructions on back

Submit to Appropriate District Office

State Lease - 6 Copies

Fee Lease - 5 Copies

☐ AMENDED REPORT**APPLICATION FOR PERMIT TO DRILL, RE-ENTER, DEEPEN, PLUGBACK, OR ADD A ZONE**

<sup>1</sup> Operator Name and Address TEXACO EXPLORATION & PRODUCTION INC. P.O. Box 3109, Midland Texas 79702		<sup>2</sup> OGRID Number 022351
<sup>4</sup> Property Code 10917	<sup>5</sup> Property Name COOPER JAL UNIT	<sup>3</sup> API Number 30-025-33459 <sup>6</sup> Well No. 421

**7 Surface Location**

Ul or lot no.	Section	Township	Range	Lot.Idn	Feet From The	North/South Line	Feet From The	East/West Line	County
J	24	24-S	36-E		1575	SOUTH	2525	EAST	LEA

**8 Proposed Bottom Hole Location If Different From Surface**

Ul or lot no.	Section	Township	Range	Lot.Idn	Feet From The	North/South Line	Feet From The	East/West Line	County
<sup>9</sup> Proposed Pool 1 JALMAT					<sup>10</sup> Proposed Pool 2 LANGLIE MATTIX				

<sup>11</sup> Work Type Code N	<sup>12</sup> Well Type Code O	<sup>13</sup> Rotary or C.T. ROTARY	<sup>14</sup> Lease Type Code P	<sup>15</sup> Ground Level Elevation 3318'
<sup>16</sup> Multiple Yes	<sup>17</sup> Proposed Depth 3800'	<sup>18</sup> Formation QUEEN / YATES	<sup>19</sup> Contractor NABORS	<sup>20</sup> Spud Date 6/20/96

**21 Proposed Casing and Cement Program**

SIZE OF HOLE	SIZE OF CASING	WEIGHT PER FOOT	SETTING DEPTH	SACKS OF CEMENT	EST. TOP
12 1/4	8 5/8	24#	400'	250 SACKS	SURFACE
7 7/8	5 1/2	15.5#	3800'	850 SACKS	SURFACE

22 Describe the proposed program. If this application is to DEEPEN or PLUG BACK give the data on the present productive zone and proposed new productive zone. Describe the blowout prevention program, if any. Use additional sheets if necessary.

**CEMENTING PROGRAM:**

SURFACE CASING - 250 SACKS CLASS C w/ 2% CACL2 (14.8, 1.34 CF/S, 6.3 GW/S).

Permit Expires 1 Year From Approval

Date Unless Drilling Underway

PRODUCTION CASING - 500 SACKS 35/65 POZ CLASS H w/ 6% GEL, 5% SALT, 1/4# FLOCELE (12.8 PPG, 1.94 CF/S, 10.4 GW/S). F/B 350 SACKS CLASS H (15.6 PPG, 1.18 CF/S, 5.2 GW/S).

UNORTHODOX LOCATION: NMOCD DISTRICT APPROVAL REQUESTED PER RULE 104.F.(1) FOR EFFICIENT PRODUCTION PATTERN. REQUEST TO DOWN-HOLE COMMINGLE THE JALMAT AND LANGLIE MATTIX WILL BE FILED.

THERE ARE NO OTHER OPERATORS IN THIS QUARTER QUARTER SECTION.

23 I hereby certify that the rules and regulations of the Oil Conservation Division have been complied with and that the information given above is true and complete to the best of my knowledge and belief.

Signature

*C. Wade Howard*

Printed Name

C. Wade Howard

Title

Eng. Assistant

Date

5/16/96

Telephone

688-4606

**OIL CONSERVATION DIVISION**

ORIGINAL SIGNED BY JERRY SEXTON

Approved By: DISTRICT I SUPERVISOR

Title:

Approval Date: MAY 20 1996

Expiration Date:

Conditions of Approval:  
Attached ☐

DISTRICT I  
P. O. Box 1980, Hobbs, NM 88240

DISTRICT II  
P. O. Drawer DD, Artesia, NM 88210

DISTRICT III  
1000 Rio Brazos Rd., Aztec, NM 87410

DISTRICT IV  
P. O. Box 2088, Santa Fe, NM 87504-2088

State of New Mexico  
Energy, Minerals and Natural Resources Department

OIL CONSERVATION DIVISION  
PO Box 2088  
Santa Fe, NM 87504-2088

Form C-102  
Revised February 10, 1994

Instructions on back

Submit to Appropriate District Office

State Lease-4 copies

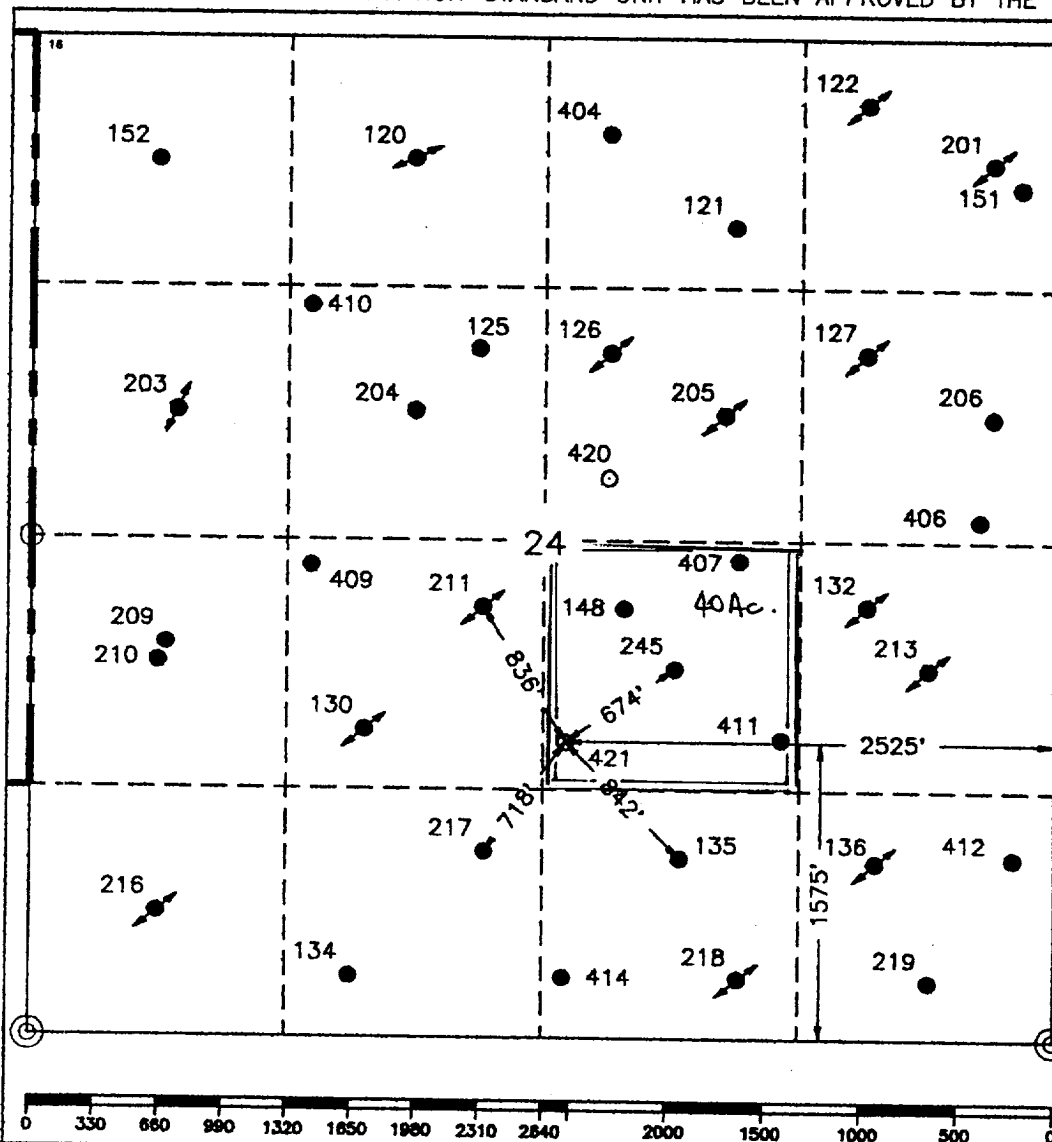
Fee Lease-3 copies

WELL LOCATION AND ACREAGE DEDICATION PLAT

☐ AMENDED REPORT

<sup>1</sup> API Number 30-025-33458		<sup>2</sup> Pool Code 33820/37240		<sup>3</sup> Pool Name Jalmat; Langlie Mattix					
<sup>4</sup> Property Code 10917		<sup>5</sup> Property Name COOPER JAL UNIT						<sup>6</sup> Well Number 421	
<sup>7</sup> OGRID No. 22351		<sup>8</sup> Operator Name TEXACO EXPLORATION & PRODUCTION, INC.						<sup>9</sup> Elevation 3318'	
<sup>10</sup> Surface Location									
UL or lot no. J	Section 24	Township 24-S	Range 36-E	Lot Idn	Feet from the 1575'	North/South line South	Feet from the 2525'	East/West line East	County Lea
<sup>11</sup> Bottom Hole Location If Different From Surface									
UL or lot no.	Section	Township	Range	Lot Idn	Feet from the	North/South line	Feet from the	East/West line	County
<sup>12</sup> Dedicated Acres 40		<sup>13</sup> Joint or Infill		<sup>14</sup> Consolidation Code		<sup>15</sup> Order No.			

NO ALLOWABLE WILL BE ASSIGNED TO THIS COMPLETION UNTIL ALL INTERESTS HAVE BEEN CONSOLIDATED  
OR A NON-STANDARD UNIT HAS BEEN APPROVED BY THE DIVISION.

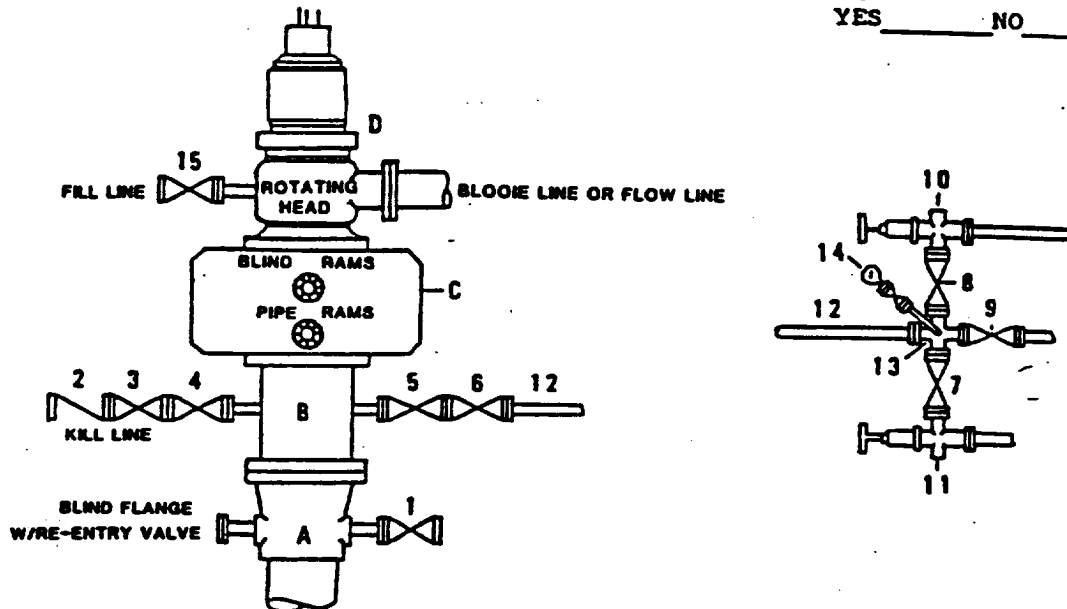


<sup>16</sup> OPERATOR CERTIFICATION	
I hereby certify that the information contained herein is true and complete to the best of my knowledge and belief.	
Signature <i>C. Wade Howard</i>	
Printed Name C. Wade Howard	
Position Engineer's Assistant	
Company Texaco Expl. & Prod. Inc.	
Date May 15, 1996	
<sup>17</sup> SURVEYOR CERTIFICATION	
I hereby certify that the well location shown on this plat was plotted from field notes of actual surveys made by me or under my supervision and that the same is true and correct to the best of my knowledge and belief.	
Date Surveyed May 7, 1996	
Signature & Seal of Professional Surveyor <i>John S. Piper</i>	
Certificate No. 7254 John S. Piper	
Sheet	

○ = Staked Location ● = Producing Well ↗ = Intention Well

**DRILLING CONTROL  
CONDITION II-B 3000 WP  
FOR AIR DRILLING OR  
WHERE NITROGEN OR AIR BLOWS ARE EXPECTED**

H<sub>2</sub>S TRIM REQUIRED  
YES \_\_\_\_\_ NO \_\_\_\_\_



**DRILLING CONTROL**

**MATERIAL LIST - CONDITION II - B**

- |                |   |
|----------------|---|
| A              | Texaco Wellhead   |
| B              | 3000# W.P. drilling spool with a 2" minimum flanged outlet for kill line and 3" minimum flanged outlet for choke line.  |
| C              | 3000# W.P. Dual ram type preventer, hydraulic operated with 1" steel, 3000# W.P. control lines (where sub-structure height is adequate, 2 - 3000# W.P. single ram type preventers may be utilized). |
| D              | Rotating Head with fill up outlet and extended Bleeed Line.   |
| 1,3,4,<br>7,8, | 2" minimum 3000# W.P. flanged full opening steel gate valve, or Halliburton Lo Torc Plug valve.   |
| 2              | 2" minimum 3000# W.P. back pressure valve.  |
| 5,6,9          | 3" minimum 3000# W.P. flanged full opening steel gate valve, or Halliburton Lo Torc Plug valve.   |
| 12             | 3" minimum schedule 80, Grade "B", seamless line pipe.  |
| 13             | 2" minimum x 3" minimum 3000# W.P. flanged cross.   |
| 10,11          | 2" minimum 3000# W.P. adjustable choke bodies.  |
| 14             | Cameron Mud Gauge or equivalent ( location optional in choke line).   |
| 15             | 2" minimum 3000# W.P. flanged or threaded full opening steel gate valve, or Halliburton Lo Torc Plug valve.   |



**TEXACO, INC.**  
MIDLAND DIVISION  
MIDLAND, TEXAS



SCALE	DATE	EST. NO.	DRG. NO.
DRAWN BY			
CHECKED BY			
APPROVED BY			

**EXHIBIT C**