

SUBMIT IN TRIPLICATE

UNIT
DEPARTMENT
BUREAU OF LAND

OPER. OGRID NO. 22351
PROPERTY NO. 20024
POOL CODE ✓
EXP. DATE 12/15/96
API NO. 30-025-337D4

CCM 11-6-96
FORM APPROVED
Budget Bureau No. 1004-0136
Expires: December 31, 1991

APPLICATION FOR PE.

| | | | | | |
|--|--|---|--|---|---|
| 1a. Type of Work DRILL <input checked="" type="checkbox"/> DEEPEN <input type="checkbox"/> | | 1b. Type of Well OIL WELL <input checked="" type="checkbox"/> GAS WELL <input type="checkbox"/> OTHER <input type="checkbox"/> | | SINGLE ZONE <input checked="" type="checkbox"/> MULTIPLE ZONE <input type="checkbox"/> | |
| 2. Name of Operator TEXACO EXPLORATION & PRODUCTION INC. | | | | | |
| 3. Address and Telephone No. P.O. Box 3109, Midland Texas 79702 688-4606 | | | | | |
| 4. Location of Well (Report location clearly and in accordance with any State requirements.) At Surface <u>(1)</u> Unit Letter B : 660 Feet From The NORTH Line and 1980 Feet From The EAST Line At proposed prod. zone SAME | | | | | |
| 14. Distance in Miles and Direction from Nearest Town or Post Office* 30 MILES SE OF LOVING, NM | | | | | |
| 15. Distance From Proposed* Location to Nearest Property or Lease Line, Ft. (also to nearest drig. unit line, if any) 680' | | 16. No. of Acres in Lease 1882.6 | | 17. No. of Acres Assigned To This Well 40.35 | |
| 18. Distance From Proposed Location* to Nearest Well, Drilling, Completed or Applied For, On This Lease, Ft. N/A | | 19. Proposed Depth 12000' | | 20. Rotary or Cable Tools ROTARY | |
| 21. Elevations (Show whether DF, RT, GR, etc.) GR-3472' | | | | | 22. Approx. Date Work Will Start* 12/15/96 |

| 23. PROPOSED CASING AND CEMENT PROGRAM | | | | |
|--|-----------------------|-----------------|---------------|--------------------------|
| SIZE OF HOLE | GRADE, SIZE OF CASING | WEIGHT PER FOOT | SETTING DEPTH | QUANTITY OF CEMENT |
| 14 3/4 | WC40, 11 3/4 | 42# | 700' | 420 SACKS - CIRCULATE |
| 11 | WC50, 8 5/8 | 32# | 4500' | 1200 SACKS - CIRCULATE |
| 7 7/8 | L80, 5 1/2 | 17# | 12000' | 2000 SACKS - TOC @ 3000' |

CEMENTING PROGRAM:
SURFACE CASING - 300 SACKS CLASS C W/ 2% GEL (14.2 PPG, 1.5 CF/S, 7.4 GW/S) F/B 120 SACKS CLASS C W/ 2% CACL2 (14.8 PPG, 1.34 CF/S, 6.3 GW/S).
INTERMEDIATE CASING - 1000 SACKS 35/65 POZ CLASS H W/ 6% GEL, 5% SALT, 1/4# FLOCELE (12.8 PPG, 1.94 CF/S, 10.5 GW/S). F/B 200 SACKS CLASS H (15.6 PPG, 1.18 CF/S, 5.2 GW/S).
PRODUCTION CASING - 1st STG: 550 SACKS 50/50 POZ H W/ 2% GEL, 5% SALT, 1/4# FC (14.2 PPG, 1.35 CF/S, 6.3 GW/S). F/B 200 SACKS CLASS H (15.6 PPG, 1.18 CF/S, 5.2 GW/S).
DV TOOL @ 8500' - 2nd STG: 1050 SACKS 50/50 POZ CLASS H W/ 2% GEL, 5% SALT, 1/4# FLOCELE (14.2 PPG, 1.35 CF/S, 6.3 GW/S). F/B 200 SACKS CLASS H (15.6 PPG, 1.18 CF/S, 5.2 GW/S).

THERE ARE NO OTHER OPERATORS IN THIS QUARTER QUARTER SECTION.

In Above Space Describe Proposed Program: If proposal is to deepen, give data on present productive zone and proposed new productive zone. If proposal is to drill or deepen directionally, give pertinent data on subsurface locations and measured true verticle depths. Give blowout preventer program, if any.

24. I hereby certify that the foregoing is true and correct
SIGNATURE C. Wade Howard TITLE Eng. Assistant DATE 11/5/96
TYPE OR PRINT NAME C. Wade Howard

(This space for Federal or State office use)

PERMIT NO. _____ APPROVAL DATE _____
Application approval does not warrant or certify that the applicant holds legal or equitable title to those rights in the subject lease which would entitle the applicant to conduct operations thereon.
APPROVED BY (OBIG. SGP) TONY L. FERGUSON TITLE ADM. MINERALS DATE 11-26-96
CONDITIONS OF APPROVAL, IF ANY:

Title 18 U.S.C. Section 1001, makes it a crime for any person knowingly and willfully to make to any department or agency of the United States any false, fictitious or fraudulent statements or representations as to any matter within its jurisdiction.

DISTRICT I
P. O. Box 1980, Hobbs, NM 88240

DISTRICT II
P. O. Drawer DD, Artesia, NM 88210

DISTRICT III
1000 Rio Brazos Rd., Aztec, NM 87410

DISTRICT IV
P. O. Box 2088, Santa Fe, NM 87504-2088

State of New Mexico
Energy, Minerals and Natural Resources Department

OIL CONSERVATION DIVISION

PO Box 2088
Santa Fe, NM 87504-2088

Form C-102
Revised February 10, 1994

Instructions on back

Submit to Appropriate District Office

State Lease-4 copies
Fee Lease-3 copies

☐ AMENDED REPORT

WELL LOCATION AND ACREAGE DEDICATION PLAT

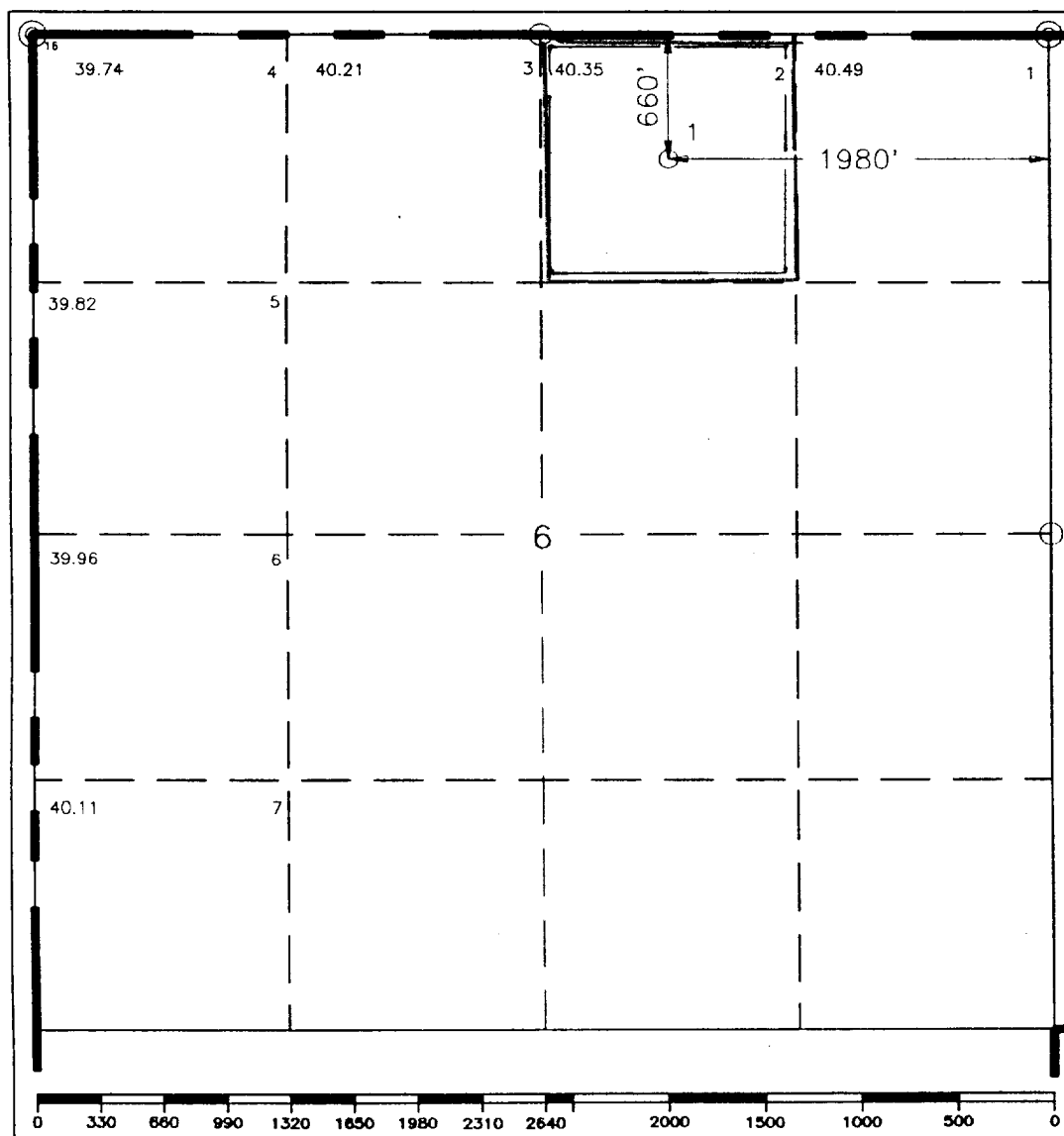
| | | | |
|---|---|-----------------------------|---|
| ¹ API Number 30-025-33704 | | ² Pool Code L | ³ Pool Name Wildcat, Delaware/ Bone Springs |
| ⁴ Property Code 20024 | ⁵ Property Name Cotton Draw 6B Federal | | ⁶ Well Number 1 |
| ⁷ GRID No. 22351 | ⁸ Operator Name TEXACO EXPLORATION & PRODUCTION, INC. | | ⁹ Elevation 3472' |

| ¹⁰ Surface Location | | | | | | | | | |
|--------------------------------|--------------|------------------|---------------|---------|-----------------------|---------------------------|------------------------|------------------------|----------------------------|
| UL or lot no. B | Section 6 | Township 25-S | Range 32-E | Lot idn | Feet from the 660' | North/South line North | Feet from the 1980' | East/West line East | ⁷ County Lea |

| ¹¹ Bottom Hole Location If Different From Surface | | | | | | | | | |
|--|---------|----------|-------|---------|---------------|------------------|---------------|----------------|---------------------|
| UL or lot no. | Section | Township | Range | Lot idn | Feet from the | North/South line | Feet from the | East/West line | ⁷ County |

| | | | |
|--|-------------------------------|----------------------------------|-------------------------|
| ¹² Dedicated Acres 40.35 | ¹³ Joint or Infill | ¹⁴ Consolidation Code | ¹⁵ Order No. |
|--|-------------------------------|----------------------------------|-------------------------|

NO ALLOWABLE WILL BE ASSIGNED TO THIS COMPLETION UNTIL ALL INTERESTS HAVE BEEN CONSOLIDATED
OR A NON-STANDARD UNIT HAS BEEN APPROVED BY THE DIVISION.

| | |
|--|---|
|  | ¹⁶ OPERATOR CERTIFICATION I hereby certify that the information contained herein is true and complete to the best of my knowledge and belief. |
| | Signature <i>C. Wade Howard</i> |
| | Printed Name C. Wade Howard |
| | Position Engineer's Assistant |
| | Company Texaco Expl. & Prod. Inc. |
| | Date October 23, 1996 |
| | ¹⁷ SURVEYOR CERTIFICATION I hereby certify that the well location shown on this plat was plotted from field notes of actual surveys made by me or under my supervision, and that the same is true and correct to the best of my knowledge and belief. |
| | Date Surveyed October 10, 1996 |
| | Signature & Seal of Professional Surveyor <i>John S. Piper</i> |
| | Certificate No. 7254 John S. Piper |

DRILLING PROGRAM

COTTON DRAW 6B FEDERAL WELL NO. 1

SURFACE DESCRIPTION:

The land surface in this area is relatively level with small sand dunes. Regionally, the land slopes to the South. Vegetation consists mainly of shin oak, sand sage, broom-snake weed, mesquite, and range grasses.

FORMATION TOPS: Estimated KB Elevation: 3490'

| <u>Formation</u> | <u>Depth</u> | <u>Lithology</u> | <u>Fluid Content</u> |
|---------------------|--------------|------------------|----------------------|
| Rustler | 600' | Sand, Shale | ---- |
| Salado | 1000' | Salt | ---- |
| Castile | 2800' | Anhydrite | ---- |
| Base of last Salt | 4100' | Salt | ---- |
| Lamar | 4350' | Limestone | Marker |
| Manzaita | 5518' | Limestone | ---- |
| Brushy Canyon | 6987' | Sandstone, Shale | ---- |
| Brushy Canyon - Pay | 7100' | Sandstone, Shale | Oil/Gas |
| Bone Spring | 9450' | Sandstone | Oil/Gas |
| Wolfcamp | 11900' | Limestone | Marker |

The base of the salt section is found around 4100'. No abnormal temperatures or hazardous gases are anticipated to be encountered in this well. The Bottom Hole Pressure is estimated to be 8.3 PPG EMW (5200 PSI).

Duration of Operation: 35 Days to Drill
40 Days to Complete

PRESSURE CONTROL EQUIPMENT:

14 3/4" & 11" Hole

A 3000 psi Dual Ram type preventer with rotating head will be used. (See Exhibit C). We do not plan to have an annular preventer. We will be able to achieve full closure of the well with the double ram preventer. It will be installed after surface casing is set. BOP will be tested each time it is installed on a casing string and at least every 29 days, and operated at least once each 24-hour period during drilling.

A PVT system will not be installed. We will be drilling thru the reserve pit and will circulate the steel pits one hour each tour to check for gains and losses and will be noted on the driller's log, which is Texaco's policy.

We do not plan to run an automatic remote-controlled choke. We will have installed and tested two manual, H2S trimmed, chokes.

7 7/8" Hole

A 5000 psi Dual Ram type preventer, annular preventer with rotating head will be used (See Exhibit F-1). The BOP will be tested at least every 29 days and operated at least once each 24 hour period during drilling.

A PVT system will not be installed. Drilling fluid will be circulated through the reserve pit and also will be circulated through the steel pits one hour each tour to check for gains and losses and will be noted on the driller's log, which is Texaco's policy.

An automatic remote-controlled choke will not be used. Texaco will install and test two manual, H2S trimmed chokes.

CASING & CENTRALIZER PROGRAM:

All casing will be new.

Surface Casing: 14 3/4" Hole

11 3/4", 42#, WC-40, LTC, set @ 700'

Centralize the bottom 3 joints and every 4th to Surface.

Intermediate Casing: 11" Hole

8 5/8", 32#, WC-50, LTC, set @ 4500'

Centralize the bottom 3 joints.

Production Casing: 7 7/8" Hole

5 1/2", 17#, L-80, LTC, set @ 12000'

DV Tool @ 8500'. Centralize the bottom three joints and above & below the DV Tool and two baskets below the DV.

MUD PROGRAM:

| <u>Depth</u> | <u>Type</u> | <u>Weight</u> | <u>Viscosity</u> |
|--------------|-------------|---------------|------------------|
| 0'-700' | Fresh Water | 8.4 | 28 |
| 700'-4500' | Brine Water | 10.0 | 29 |
| 4500'-12000' | Fresh Water | 8.4 | 28 |

LOGGING, TESTING:

GR-CAL-CNL-LDT-PIL, BHC, and CMR surveys will be run.

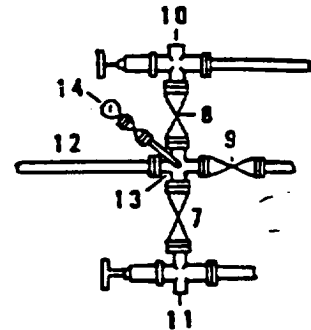
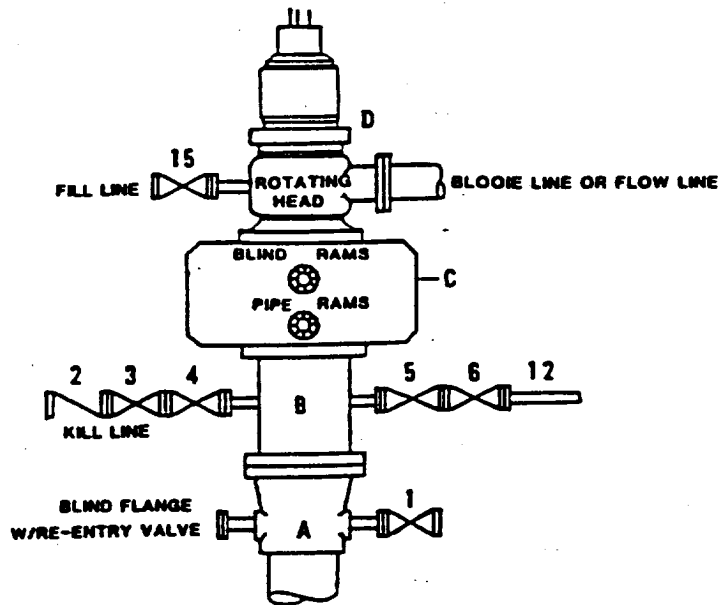
A two-man Mud Logging Unit will be used from 4500' to 12000'.

No Drill Stem Tests are planned.

Sidewall Cores (40) are planned for the Bone Springs.

**DRILLING CONTROL
CONDITION II-B 3000 WP
FOR AIR DRILLING OR
WHERE NITROGEN OR AIR BLOWS ARE EXPECTED**

H₂S TRIM REQUIRED
YES ☒ NO ☐



DRILLING CONTROL

MATERIAL LIST - CONDITION II - B

- | | |
|----------------|--|
| A | Texaco Wellhead |
| B | 3000# W.P. drilling spool with a 2" minimum flanged outlet for kill line and 3" minimum flanged outlet for choke line. |
| C | 3000# W.P. Dual ram type preventer, hydraulic operated with 1" steel, 3000# W.P. control lines (where substructure height is adequate, 2 - 3000# W.P. single ram type preventers may be utilized). |
| D | Rotating Head with fill up outlet and extended Bloode Line. |
| 1,3,4, 7,8, | 2" minimum 3000# W.P. flanged full opening steel gate valve, or Halliburton Lo Torc Plug valve. |
| 2 | 2" minimum 3000# W.P. back pressure valve. |
| 5,6,9 | 3" minimum 3000# W.P. flanged full opening steel gate valve, or Halliburton Lo Torc Plug valve. |
| 12 | 3" minimum schedule 80, Grade "B", seamless line pipe. |
| 13 | 2" minimum x 3" minimum 3000# W.P. flanged cross. |
| 10,11 | 2" minimum 3000# W.P. adjustable choke bodies. |
| 14 | Cameron Mud Gauge or equivalent (location optional in choke line). |
| 15 | 2" minimum 3000# W.P. flanged or threaded full opening steel gate valve, or Halliburton Lo Torc Plug valve. |



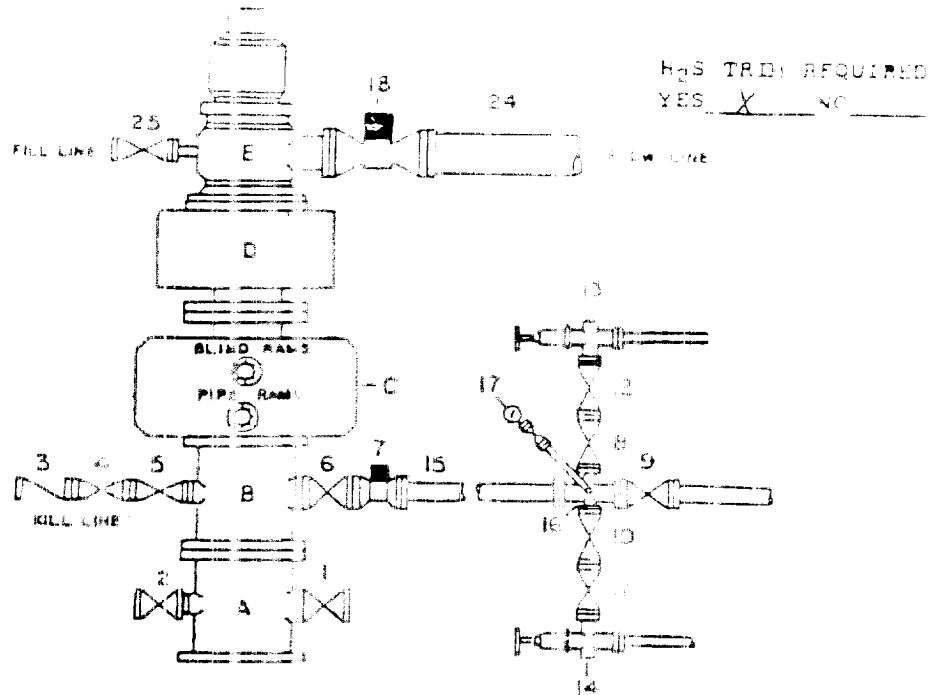
TEXACO, INC.
MIDLAND DIVISION
MIDLAND, TEXAS



| SCALE | DATE | EST NO | DWG NO |
|-------------|------|--------|--------|
| DRAWN BY | | | |
| CHECKED BY | | | |
| APPROVED BY | | | |

EXHIBIT C

DRILLING CONTROL CONDITION II-B-5000 PSI AP



DRILLING CONTROL APPENDIX - CONDITION IV

- A Maxco Valve
- B 5000 PSI drilling spool with a minimum 2" flanged outlet for kill line and 1" minimum flanged outlet for choke line
- C 5000 PSI Over run type preventer, hydraulic operated with 1" steel 5000 PSI control lines
- D 5000 PSI Angular preventer, hydraulic operated with 1" steel 5000 PSI control lines
- E Rotating Head with full up outlet and extended choke line
- 1, 2, 3, 4 1" minimum 5000 PSI flanged full opening steel gate valve or full burton Lo Torc Plug valve
- 5 1" minimum 5000 PSI back pressure valve
- 6, 9 1" minimum 5000 PSI flanged full opening steel gate valve or full burton Lo Torc Plug valve
- 7 1" minimum 5000 PSI flanged hydraulic valve
- 15 1" minimum schedule 160 Grade B, seamless line pipe
- 16 2" minimum 5000 PSI flanged cross
- 17, 18 2" minimum 5000 PSI adjustable chokes with carbide tips
- 17 Cameron Mud Gauge or equivalent (location on choke line optional)
- 18 6" minimum 5000 PSI hydraulic flanged valve
- 24 8" minimum steel flow line
- 25 2" minimum 5000 PSI flanged or threaded full opening steel gate valve or full burton Lo Torc Plug valve



TEXACO INC
OIL AND GAS DIVISION
HOUSTON, TEXAS



SCALE _____ DATE _____ EST NO _____ DWG NO _____
DRAWN BY _____
CHECKED BY _____
APPROVED BY _____

EXHIBIT F-1

SURFACE USE AND OPERATIONS PLAN
FOR
TEXACO EXPLORATION AND PRODUCTION, INC.

COTTON DRAW 6B FEDERAL NO. 1
660' FNL & 1980' FEL, SECTION 6,
TWP. 25 SOUTH, RANGE 32 EAST, N.M.P.M.,
LEA COUNTY, NEW MEXICO

LOCATED: 30 miles Southeasterly of Loving, New Mexico and 34 miles Southwesterly of Jal, New Mexico

FEDERAL LEASE NUMBER: NM192742

LEASE ISSUED: Lease is in a producing status.

ACRES IN LEASE: 1882.6

RECORD LESSEE: TEXACO EXPLORATION AND PRODUCTION, Inc.

SURFACE OWNERSHIP: USA

GRAZING PERMITTEE: B. & B. Cattle Co.
Attn: J. F. Hervella
El Paso, Texas

POOL: Wildcat, Delaware/ Bone Springs

POOL RULES: Field Rules are for no wells to be located closer than 330' to any quarter-quarter section and to be 330' from the lease line.

EXHIBITS: A. Access Road and Facilities Map

B. Drilling Rig Layout Diagram

C. Well Location and Acreage Dedication Plat

1. EXISTING ACCESS ROADS

A. Exhibit "A" is an enlarged portion of a 7.5 minute U.S.G.S. topographic map showing the proposed well site and the existing roads in the area. Point "A" is the intersection of an existing resource road with Lea County Road No. 1. Said intersection is 5.7 miles South of its intersection with State Highway 128 which is 30 miles West of Jal, New Mexico and 32 miles East of Loving, New Mexico. Point "A" is 9.7 miles North of the Texas-New Mexico State line. From Point "A" go 0.9 miles West, then 0.1 miles North, then 1.15 miles West, then 0.8 miles North, then 1.0 mile West, crossing the Lea-Eddy County line, continuing for a total distance of 2.0 miles, then 1.9 miles North, then 0.35 miles Westerly and 0.40 miles North to Point "B", the beginning of the proposed resource road to be constructed for the Cotton Draw 32K State No. 1 as shown on Exhibit "A", and then 2.0 miles East to Point "C" the beginning of the proposed resource road.

2. PLANNED RESOURCE ROAD

A. Length and Width: From Point "C" as shown on Exhibit "A", a new 14 foot wide Resource Road will be approximately 530 feet South to the proposed well location (Shown in red on Exhibit "A") with access at the Northeast corner of the proposed well pad, as shown on Exhibits "A" and "B".

B. Surfacing Material: Caliche material will be used to surface the proposed road. It will be watered, compacted, and graded.

C. Maximum Grade: An approximate grade of less than one percent will be encountered descending from Point "B" to the proposed well pad.

D. Turnouts: Turnouts will not be required.

E. Drainage Design: The new road will be crowned at the center to direct drainage to ditches on both sides of the roadway with turnout ditches to be constructed as required.

F. Culverts: None required.

G. Cuts and Fills: A slight amount of leveling will be required as the road crosses several small size sand dunes to the proposed well pad.

H. Gates and Cattle Guards: None will be required.

3. LOCATION OF EXISTING WELLS

A. Existing wells on the lease and in the immediate area are shown on Exhibit "A".

Surface Use & Operation Plan, Cotton Draw 6B St #1, 10/29/96, Pg. 3

4. LOCATION OF EXISTING AND PROPOSED FACILITIES

A. The oil, gas, and/or water that this well produces will be stored at the proposed tank battery to be constructed on the proposed well site as shown on Exhibits "A" and "B".

B. No electrical service is anticipated at this time.

5. LOCATION AND TYPE OF WATER SUPPLY

A. It is not contemplated that a water well would be drilled. Water necessary for drilling operations will be purchased and trucked to the well site or will be transported to the well site by a temporary pipeline laid on the ground along side existing and proposed roads.

6. SOURCE OF CONSTRUCTION MATERIALS

A. Caliche needed for the road and well pad will be taken from the proposed borrow pit located within the 400 x 400' archaeologically cleared tract at the proposed well site (See Exhibit "B" for location). If sufficient quality or quantity of caliche is not available, it will be transported to the proposed road and well site from the existing pit in the NW/4 of the NE/4 of Section 2, T-25-S, R-31-E, by the existing and proposed resource road.

7. METHOD OF HANDLING WASTE DISPOSAL

A. Drill cuttings will be disposed of in the drilling pits.

B. Drilling fluids will be allowed to evaporate in the drilling pits until the pits are dry.

C. Water produced during tests will be disposed of at commercial or company facilities.

D. Oil produced during tests will be stored in test tanks until sold.

E. Trash, waste paper, garbage and junk will be placed in a trash bin located on the drill site pad. It will be transported to an approved landfill for disposal within 30 days after completion of drilling and/or completion of operations. All waste material will be contained to prevent scattering by the wind.

8. ANCILLARY FACILITIES

A. None required.

9. WELL SITE LAYOUT

A. Exhibit "B" shows the relative location and dimensions of the well pad, mud pits, borrow pit, and the location of the major rig components.

B. Cut and Fill requirements will be minor, but clearing and leveling of the well site will be necessary.

10. PLANS FOR RECLAMATION OF THE SURFACE

A. After completion of drilling and/or completion of operations, all equipment and other material not needed for operations will be removed. Pits will be filled and the location will be cleaned of all trash and junk to leave the well site in an as aesthetically pleasing condition as possible.

B. Any unguarded pits containing fluids will be fenced until the pits are dry.

C. After abandonment, all equipment, trash and junk will be removed and the well site will be cleaned. Any special reclamation and/or special revegetation requirements of the Surface Management Agency will be complied with and will be accomplished as rapidly as possible.

11. OTHER INFORMATION

A. Topography: The land surface in the area of the well is relatively level with small to moderate sand dunes. Regionally, the land slopes to the South with average slopes of one percent.

B. Soil: Top soil at the well site is a deep sandy loam.

C. Flora and Fauna: The vegetation cover is moderate. It includes range grasses, weeds, scrub oak bushes, and mesquite bushes. Wildlife in the area is that typical of a semi-arid desert land and includes coyotes, rabbits, rodents, reptiles, hawks, dove, quail and other small birds.

D. Ponds and Streams: There are no rivers, lakes, ponds, or streams in the area.

E. Residences and Other Structures: There are no occupied dwellings or other structures within 3/4 mile of the well site.

F. Archaeological, Historical, or other Cultural Sites: None were observed in the area.

G. Land Use: Grazing, oil and gas production, and wildlife habitat.

H. Surface Ownership: Federal

12. OPERATOR'S REPRESENTATIVE

C. Wade Howard
Engineer's Assistant
Texaco Exploration and Production, Inc.
P. O. Box 3109
Midland, Texas 79702
Office Phone: (915) 688-4606

CERTIFICATION

I hereby certify that I, or persons under my direct supervision, have inspected the proposed drill site and access route; that I am familiar with the conditions which currently exist; that the statements made in this plan are, to the best of my knowledge, true and correct; and, that the work associated with the operations proposed herein will be performed by Texaco Exploration and Production, Inc. and its contractors and sub-contractors in conformity with this plan and the terms and conditions under which it is approved. This statement is subject to the provisions of 18 U. S. C. 1001 for the filing of a false statement.

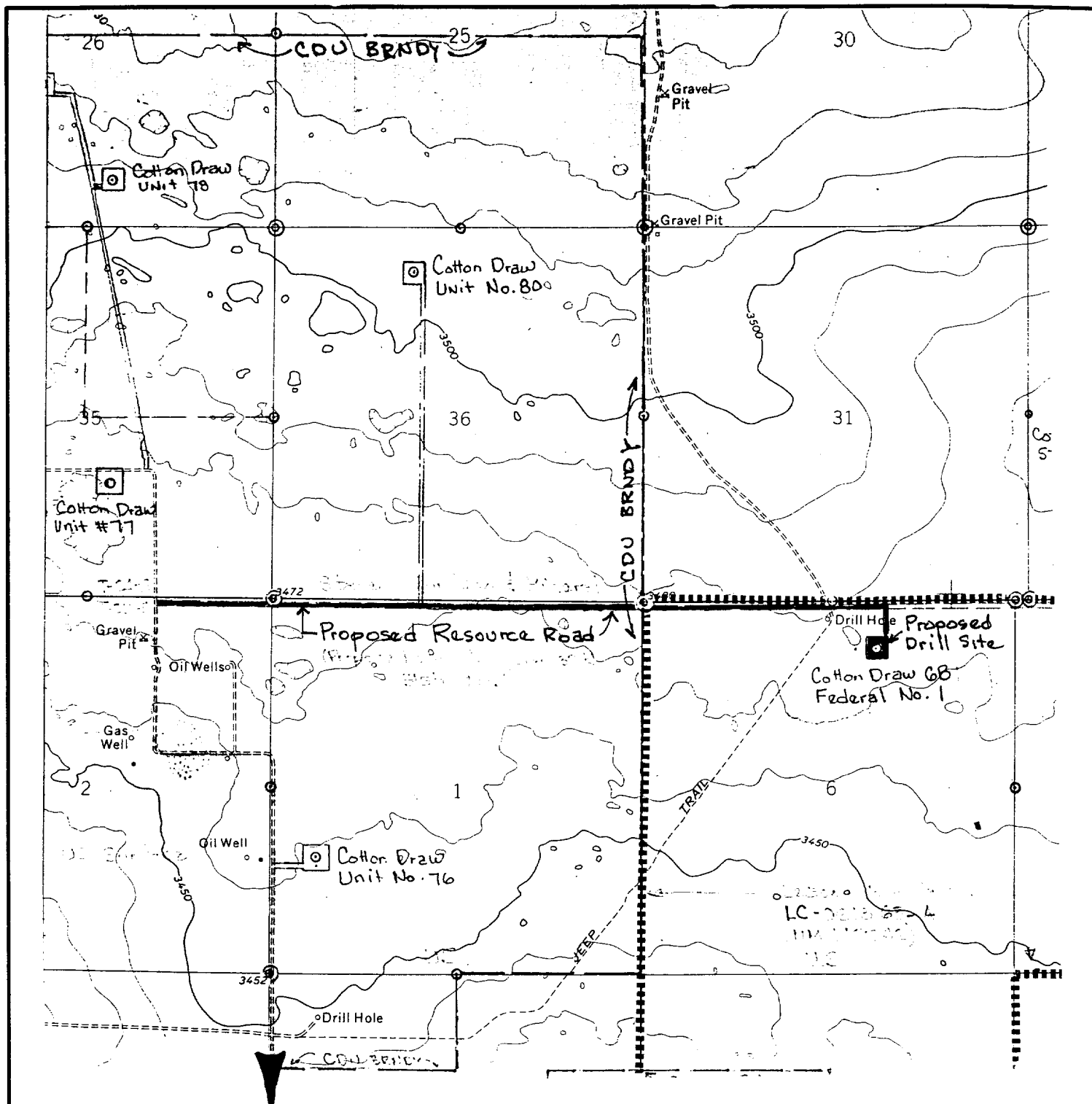
11/5/96

Date

C. Wade Howard

C. Wade Howard
Engineer's Assistant
Midland, Texas

Enclosures
jsp



LEGEND OF SYMBOLS

- — — — — Access Road (Yellow)
 — — — — — Resource Road Federal Land (Pink)
 — — — — — Resource Road Private Land (Blue)
 — — — — — Resource Road on Lease (Brown)
 — — — — — Proposed Resource Road (Red)
 — — — — — Proposed Electric Line (Orange)
 — — — — — Proposed Production Flowline (Green)
 ○ = Staked Well Location
 ● = Producing Well Location
 ◇ = Water Well
 ○ = Found 1" Iron Pipe With Brass Cap
 ⊙ = Found 2" Iron Pipe With Brass Cap
 ■ ■ ■ ■ ■ Unit or Lease Boundary

EXHIBIT "A" ACCESS ROAD AND FACILITIES MAP

TEXACO EXPLORATION AND PRODUCTION

COTTON DRAW 6B FEDERAL NO. 1
 660' FNL & 1980' FEL, Section 6
 T-25-S, R-32-E, NMPM, Lea County, NM

Drawn by: J. S. Piper

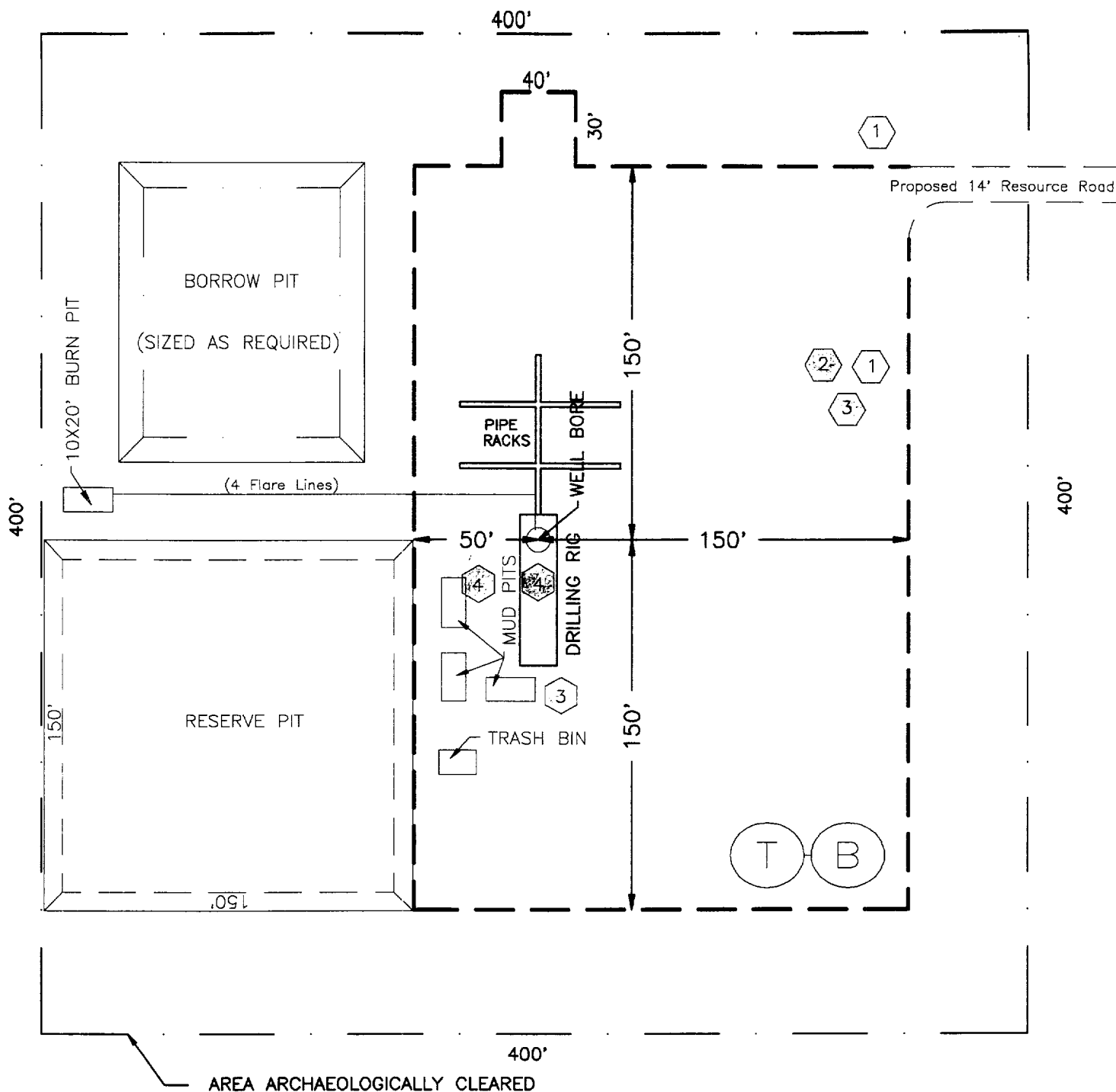
Scale: 1" = 2000 Feet

Date: October 18, 1996

C. Wade Howard

Checked by: D. M. Ballew

Sheet: 6 of 8



H₂S DRILLING OPERATION PLAN



Briefing Station



H₂S Safety Trailer



Windsocks



H₂S Detectors, Shale Shaker,
Rotating Head,
Rig Floor

Prevailing Wind from the South

EXHIBIT "B" DRILLING RIG LAYOUT

TEXACO EXPLORATION AND PRODUCTION INC.

COTTON DRAW 6B FEDERAL NO. 1
Located 660' FNL & 1980' FEL, Section 6,
T-25-S, R-32-E, NMPM, Lea County, NM

Drawn by: D. M. Ballew

Scale: 1" = 60'

Date: October 22, 1996

C. WADE HOWARD

Checked by: J. S. Piper

Sheet 7 of 8

DISTRICT I
P. O. Box 1980, Hobbs, NM 88240

DISTRICT II
P. O. Drawer DD, Artesia, NM 88210

DISTRICT III
1000 Rio Brazos Rd., Aztec, NM 87410

DISTRICT IV
P. O. Box 2088, Santa Fe, NM 87504-2088

State of New Mexico
Energy, Minerals and Natural Resources Department

Form C-102
Revised February 10, 1994

Instructions on back

OIL CONSERVATION DIVISION

PO Box 2088
Santa Fe, NM 87504-2088

Submit to Appropriate District Office

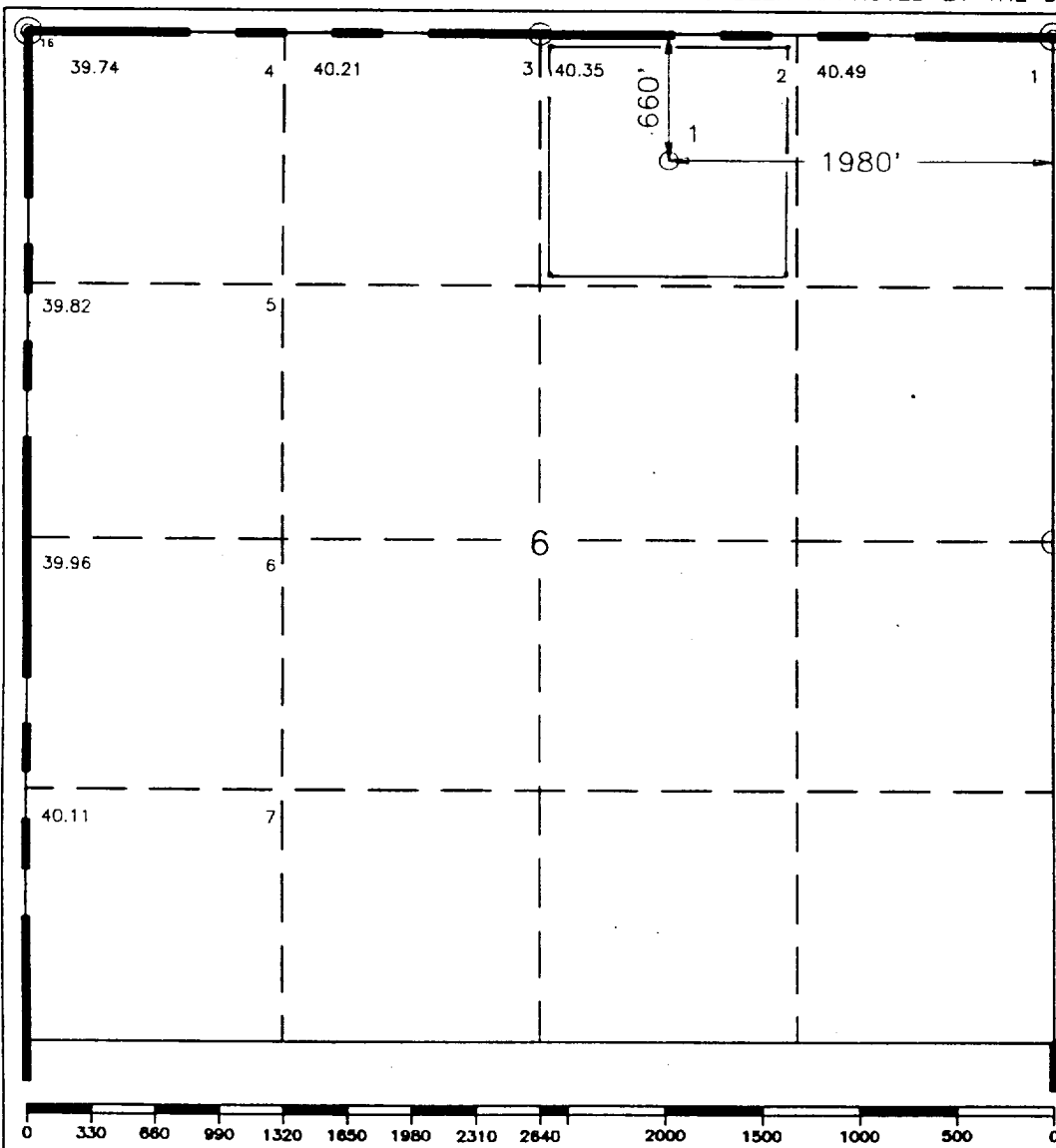
State Lease-4 copies
Fee Lease-3 copies

☐ AMENDED REPORT

WELL LOCATION AND ACREAGE DEDICATION PLAT

| | | | | | | | | | |
|--|--------------|---|---------------|---|-----------------------|---------------------------|------------------------|---------------------------------|----------------------------|
| ¹ API Number | | ² Pool Code | | ³ Pool Name Wildcat, Delaware/ Bone Springs | | | | | |
| ⁴ Property Code | | ⁵ Property Name Cotton Draw 6B Federal | | | | | | ⁶ Well Number 1 | |
| ⁷ OGRID No. 22351 | | ⁸ Operator Name TEXACO EXPLORATION & PRODUCTION, INC. | | | | | | ⁹ Elevation 3472' | |
| ¹⁰ Surface Location | | | | | | | | | |
| UL or lot no. B | Section 6 | Township 25-S | Range 32-E | Lot Idn | Feet from the 660' | North/South line North | Feet from the 1980' | East/West line East | ⁷ County Lea |
| ¹¹ Bottom Hole Location If Different From Surface | | | | | | | | | |
| UL or lot no. | Section | Township | Range | Lot Idn | Feet from the | North/South line | Feet from the | East/West line | ⁷ County |
| ¹² Dedicated Acres 40.35 | | ¹³ Joint or Infill | | ¹⁴ Consolidation Code | | ¹⁵ Order No. | | | |

NO ALLOWABLE WILL BE ASSIGNED TO THIS COMPLETION UNTIL ALL INTERESTS HAVE BEEN CONSOLIDATED
OR A NON-STANDARD UNIT HAS BEEN APPROVED BY THE DIVISION.



¹⁶OPERATOR CERTIFICATION

I hereby certify that the information contained herein is true and complete to the best of my knowledge and belief.

Signature

Printed Name

C. Wade Howard

Position

Engineer's Assistant

Company

Texaco Expl. & Prod. Inc.

Date

October 23, 1996

¹⁸SURVEYOR CERTIFICATION

I hereby certify that the well location shown on this plat was plotted from field notes of actual surveys made by me or under my supervision, and that the same is true and correct to the best of my knowledge and belief.

Date Surveyed

October 10, 1996

Signature & Seal of
Professional Surveyor

Certificate No.

7254 John S. Piper