

District I
PO Box 1980, Hobbs, NM 88241-1980
District II
PO Drawer DD, Arisa, NM 88211-0719
District III
1000 Rio Brazos Rd., Aztec, NM 87410
District IV
PO Box 2088, Santa Fe, NM 87504-2088

State of New Mexico
Energy, Minerals & Natural Resources Department

OIL CONSERVATION DIVISION
PO Box 2088
Santa Fe, NM 87504-2088

Form C-101
Revised February 10, 1994
Instructions on back
Submit to Appropriate District Office
State Lease - 6 Copies
Fee Lease - 5 Copies

☐ AMENDED REPORT

APPLICATION FOR PERMIT TO DRILL, RE-ENTER, DEEPEN, PLUGBACK, OR ADD A ZONE

¹ Operator Name and Address. PENWELL ENERGY INC. 600 NORTH MARIENFELD SUITE 1100 MIDLAND, TEXAS 79701		² OGRID Number 147380
		³ API Number 30-025-33878
⁴ Property Code 20582	⁵ Property Name TOMCAT "16" STATE	⁶ Well No. 1

⁷ Surface Location

UL or lot no.	Section	Township	Range	Lot Idn	Feet from the	North/South line	Feet from the	East/West line	County
"J"	16	23S	32E		1980'	South	1980'	East	LEA

⁸ Proposed Bottom Hole Location If Different From Surface

UL or lot no.	Section	Township	Range	Lot Idn	Feet from the	North/South line	Feet from the	East/West line	County
⁹ Proposed Pool 1 MORROW					¹⁰ Proposed Pool 2				

¹¹ Work Type Code N	¹² Well Type Code G	¹³ Cable/Rotary ROTARY	¹⁴ Lease Type Code S	¹⁵ Ground Level Elevation 3683 GR.
¹⁶ Multiple NO	¹⁷ Proposed Depth 16,000'	¹⁸ Formation MORROW	¹⁹ Contractor Unknown	²⁰ Spud Date As soon as approved

²¹ Proposed Casing and Cement Program

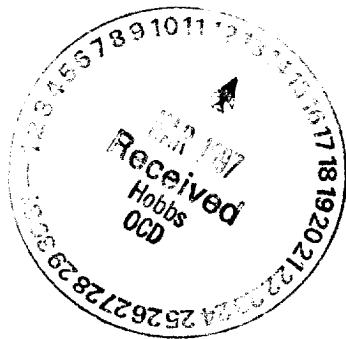
Hole Size	Casing Size	Casing weight/foot	Setting Depth	Sacks of Cement	Estimated TOC
26"	20"	94	600	600 Sx.	Circulate to S
17½"	13 3/8"	72	4700'	2000 Sx.	" " "
12¼"	9 5/8"	53.5	12,500'	1700 Sx.	" " "
8½"	7"	29	15,000 Liner	275 Sx.	
6½"	4½"	13.5	16,000 Liner	125 Sx.	

²² Describe the proposed program. If this application is to DEEPEN or PLUG BACK give the data on the present productive zone and proposed new productive zone. Describe the blowout prevention program, if any. Use additional sheets if necessary.

Permit Expires 1 Year From Approval
Date Unless Drilling Underway

SEE ATTACHMENT

²³ I hereby certify that the information given above is true and complete to the best of my knowledge and belief. Signature: <i>Joe T. Janica</i>		OIL CONSERVATION DIVISION ORIGINAL SIGNED BY JERRY SEXTON DISTRICT SUPERVISOR	
Printed name: Joe T. Janica		Title:	
Title: Agent		Approval Date: MAR 17 1997	Expiration Date:
Date: 03/14/97	Phone: 505-392-2112	Conditions of Approval: Attached <input type="checkbox"/>	



DISTRICT I
P.O. Box 1080, Hobbs, NM 88240

State of New Mexico

Energy, Minerals and Natural Resources Department

Form C-102
Revised February 10, 1994
Instruction on back
Submit to Appropriate District Office
State Lease - 4 Copies
Fee Lease - 3 Copies

DISTRICT II
P.O. Drawer DD, Artesia, NM 88210

OIL CONSERVATION DIVISION

DISTRICT III
1000 Rio Brazos Rd., Aztec, NM 87410

P.O. Box 2088
Santa Fe, New Mexico 87504-2088

☐ AMENDED REPORT

WELL LOCATION AND ACREAGE DEDICATION PLAT

API Number 30-025-33878	Pool Code ✓	Pool Name WILDCAT Morrow
Property Code 20582	Property Name TOMCAT "16" STATE	Well Number 1
GRID No. 147380	Operator Name PENWELL ENERGY INC.	Elevation 3683'

Surface Location

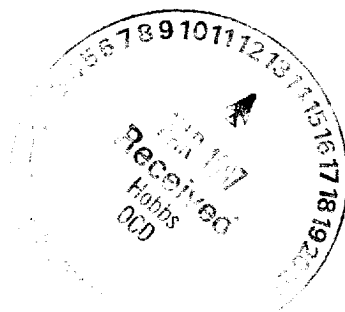
UL or lot No. J	Section 16	Township 23 S	Range 32 E	Lot Idn	Feet from the 1980	North/South line SOUTH	Feet from the 1980'	East/West line EAST	County LEA
---------------------------	----------------------	-------------------------	----------------------	---------	------------------------------	----------------------------------	-------------------------------	-------------------------------	----------------------

Bottom Hole Location If Different From Surface

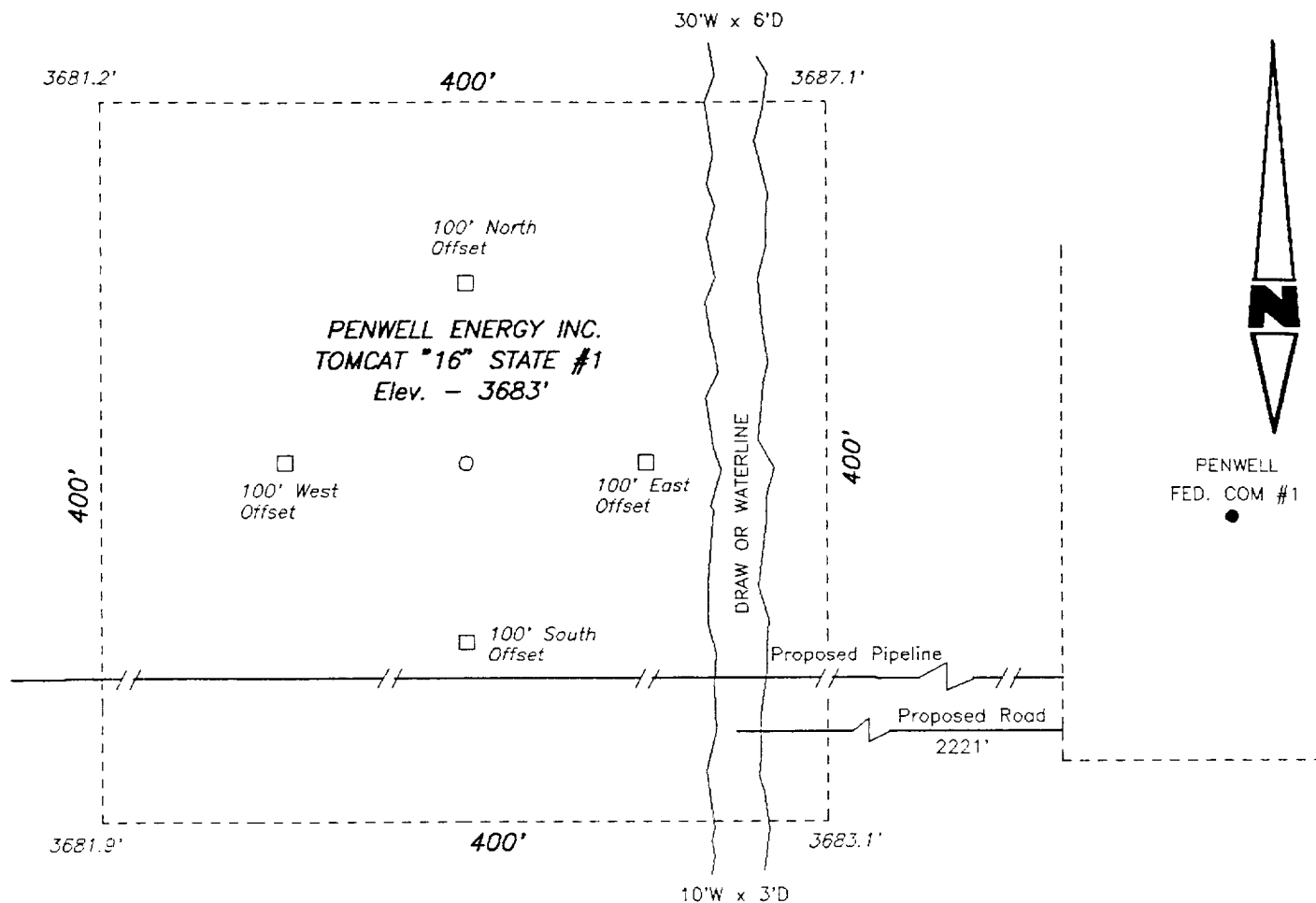
UL or lot No.	Section	Township	Range	Lot Idn	Feet from the	North/South line	Feet from the	East/West line	County
Dedicated Acres 320		Joint or Infill	Consolidation Code	Order No.					

NO ALLOWABLE WILL BE ASSIGNED TO THIS COMPLETION UNTIL ALL INTERESTS HAVE BEEN CONSOLIDATED
OR A NON-STANDARD UNIT HAS BEEN APPROVED BY THE DIVISION

	OPERATOR CERTIFICATION I hereby certify the the information contained herein is true and complete to the best of my knowledge and belief. Signature Joe T. Janica Printed Name Agent Title 03/14/97 Date
	SURVEYOR CERTIFICATION I hereby certify that the well location shown on this plat was plotted from field notes of actual surveys made by me or under my supervision, and that the same is true and correct to the best of my belief. March 6, 1997 Date Surveyed Signature & Seal Professional Surveyor W.D. Num. 71146 Certificate No.



SECTION 16, TOWNSHIP 23 SOUTH, RANGE 32 EAST, N.M.P.M.,
LEA COUNTY, NEW MEXICO



100 0 100 200 Feet

PENWELL ENERGY INC.

REF: Tomcat "16" State Number 1 / WELL PAD TOPO

THE TOMCAT "16" STATE No. 1 LOCATED 1980' FROM THE
SOUTH LINE AND 1980' FROM THE EAST LINE OF
SECTION 16, TOWNSHIP 23 SOUTH, RANGE 32 EAST,
N.M.P.M., LEA COUNTY, NEW MEXICO.

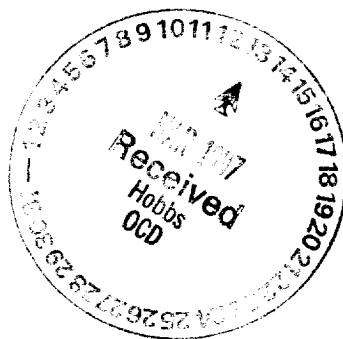
BASIN SURVEYS P.O. BOX 1786-HOBBS, NEW MEXICO

W.O. Number: 7114G Drawn By: KJG

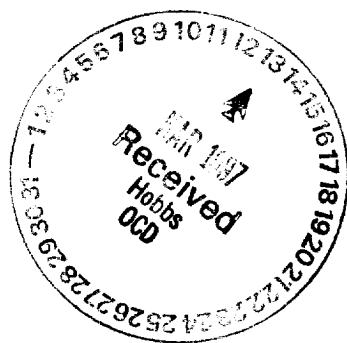
Date: 03-10-97 Disk: KJG #3 - 7114G.DWG

Survey Date: 3-6-97

Sheet 1 of 1 Sheets



1. Drill 26" hole to 600'. Run and set 600' of X-56 20" 94# casing. Cement with 600 Sx. Class "C" neat + 2% CaCl, circulate cement to surface.
2. Drill 17½" hole to 4700'. Run and set 4700' of 13 3/8" BTC L-80 72# casing. Cement with 1500 Sx. Class "C" Halco Light, tail in with 500 Sx. Class "C" + additives, circulate cement to surface.
3. Drill 12½" hole to 12,500'. Run and set 12,500' of 9 5/8" 53.5# P-110 LT&C casing. Cement with 1200 Sx. Class "H" Halco Light, tail in with 500 Sx. Class "H" neat, circulate cement to surface.
4. Drill 8½" hole to 15,000'. Run and set 7" 29# 8-R LT&C liner from 12,000' to TD 15,000'. cement liner with 275 Sx. of Class "H" + additives.
5. Drill 6½" hole to 16,000'. Run and set 4½" 13.5# 8-R LT&C P-110 production liner from 14,500 to TD 16,000' cement with 125 Sx. Class "H" + additives.





DRILLING MANUAL

BLOWOUT PREVENTION EQUIPMENT IADC Recommended BOP Stacks

Section K1
Page 3

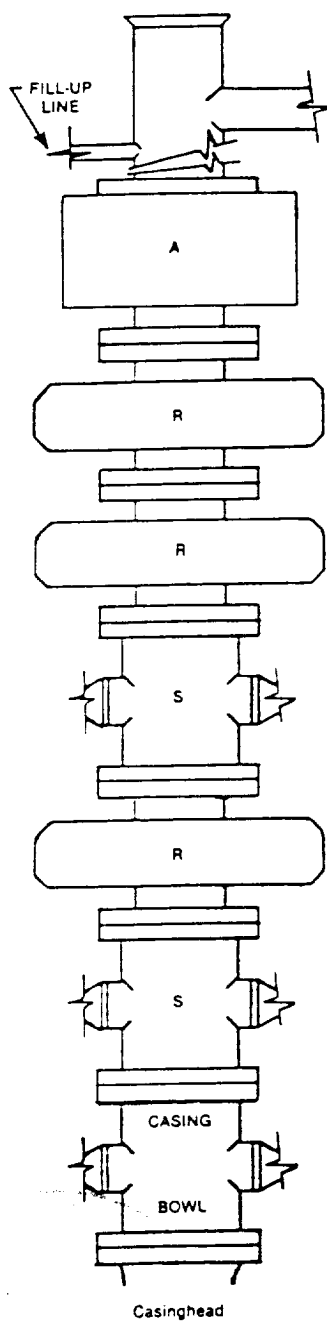
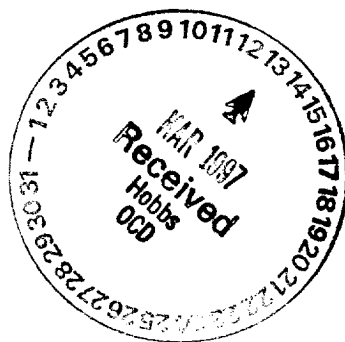


FIGURE K1-3. Recommended IADC Class 10 BOP stack arrangement SRSRRA, 10,000 psi WP. Lower drilling spool is optional with outlets on lower ram. Annular preventers 10,000 psi.



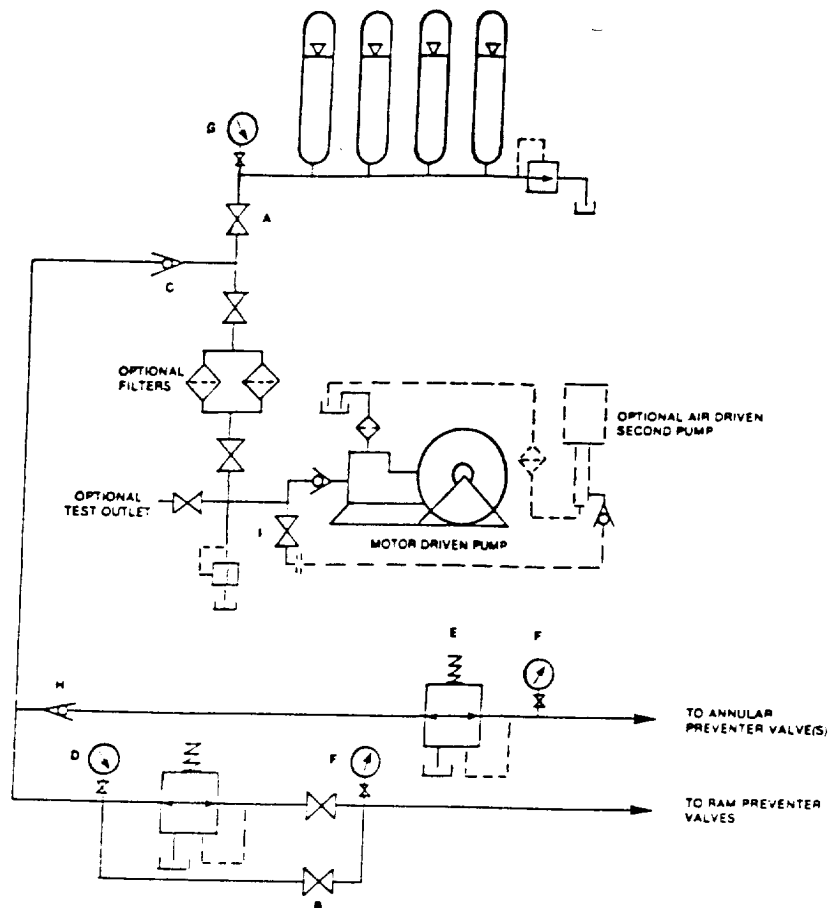


FIGURE K6-1. The schematic sketch of an accumulator system shows required and optional components.

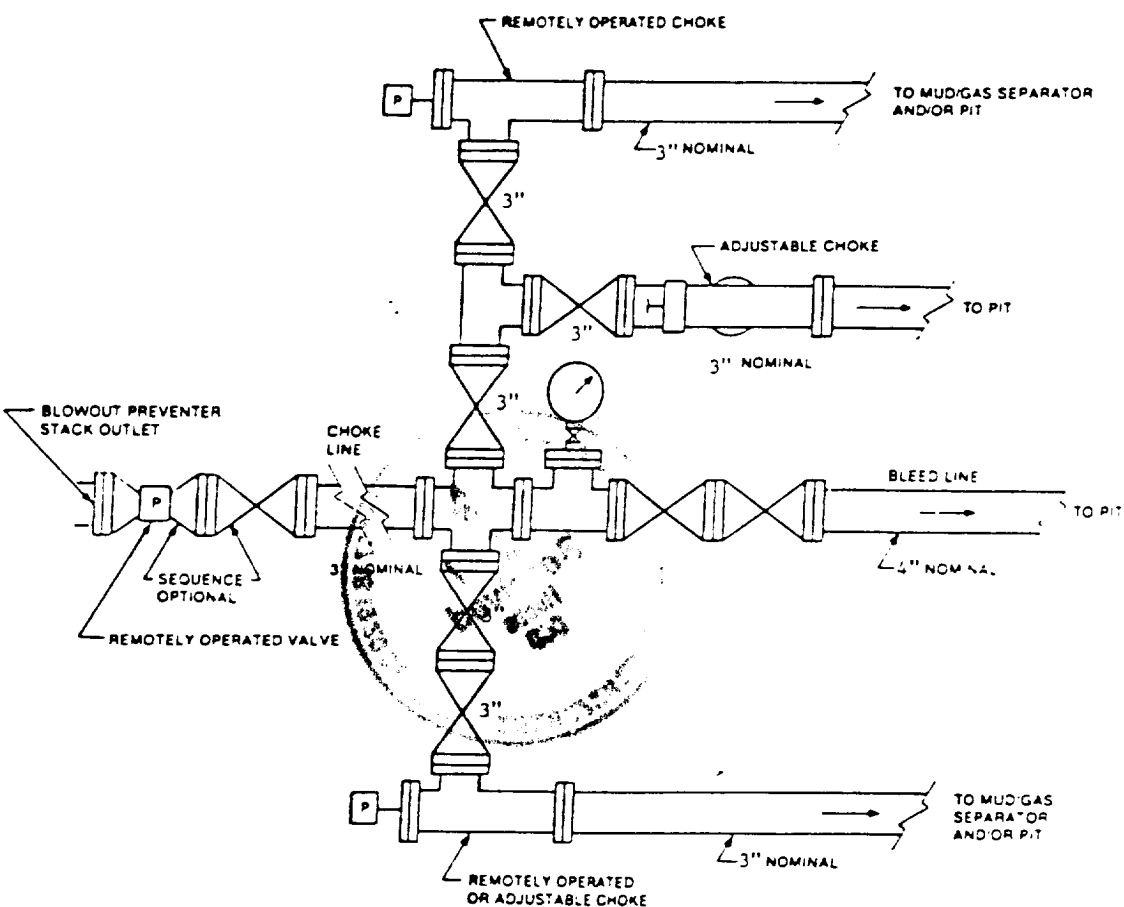


FIGURE K4-3. Typical choke manifold assembly for 10M and 15M rated working pressure service — surface installation.

