

UNITED STATES  
DEPARTMENT OF  
BUREAU OF LAND MANAGEMENT

APPLICATION FOR PERMIT

OPER. OGRID NO. 5073  
PROPERTY NO. 3127  
POOL CODE 62965  
EFF. DATE 4/25/97  
API NO. 30-025-33940

DATE  
on  
0

FORM APPROVED  
OMB NO. 1004-0136  
Expires February 28, 1995

1a. TYPE OF WORK

DRILL

b. TYPE OF WELL

OIL WELL  GAS WELL  OTHER

SINGLE ZONE  MULTIPLE ZONE

2. NAME OF OPERATOR

Conoco Inc.

a. ADDRESS AND TELEPHONE NO

10 Desta Dr. Ste 100W, Midland, Tx. 79705-4500 (915) 686-6548

4. LOCATION OF WELL (Report location clearly and in accordance with any State requirements \*)

At surface 1330' FSL & 2630' FEL

At proposed prod. zone Unit J 1330' FSL & 2630' FEL

14. DISTANCE IN MILES AND DIRECTION FROM NEAREST TOWN OR POST OFFICE\*

|  |                 |
|--|-----------------|
| 5. LEASE DESIGNATION AND SERIAL NO<br>LC 0634580                         |                 |
| 6 IF INDIAN, ALLOTTEE OR TRIBE NAME                                      |                 |
| 7 UNIT AGREEMENT NAME  |                 |
| 8. FARM OR LEASE NAME WELL NO<br>Warren Unit B/T/T/W                     |                 |
| 9. WELL NO<br>205  |                 |
| 10. FIELD AND POOL, OR WILDCAT<br>Warren Blinbry-Tubb                    |                 |
| 11. SEC. T., R., M., OR BLK. AND SURVEY OR AREA<br>Sec. 34. T-20S. R-38E |                 |
| 12 COUNTY OR PARISH<br>Lea   | 13. STATE<br>NM |

5. DISTANCE FROM PROPOSED\* LOCATION TO NEAREST PROPERTY OR LEASE LINE, FT. (Also to nearest drlg. unit line, if Any)

16 NO OF ACRES IN LEASE

17. NO. OF ACRES ASSIGNED TO THIS WELL  
40

8. DISTANCE FROM PROPOSED LOCATION\* TO NEAREST WELL, DRILLING, COMPLETED, OR APPLIED FOR, ON THIS LEASE, FT.

19. PROPOSED DEPTH  
6750'

20. ROTARY OR CABLE TOOLS  
Rotary

21. ELEVATIONS (Show whether DF, RT, GR, etc )

3519' GR

22. APPROX. DATE WORK WILL START\*

5/15/97

23. PROPOSED CASING AND CEMENTING PROGRAM

| SIZE OF HOLE | GRADE, SIZE OF CASING | WEIGHT PER FOOT | SETTING DEPTH | QUANTITY OF CEMENT |
|--------------|-----------------------|-----------------|---------------|--------------------|
| 12-1/4"      | K-55 8-5/8"           | #24             | 1500'         | 7000 lbs           |
| 7-7/8"       | K-55 5-1/2"           | #15.5           | 6750'         | 1250 sxs, circ.    |

**LEA COUNTY CONTROLLED WATER BASIN**  
**WITNESS**

It is proposed to drill a vertical wellbore as a vertical Blinbry-Tubb producer according to the plan submitted in the follow attachments:

1. Well Location and Acreage Dedication Plat (C-102)
2. Proposed Well Plan Outline
3. Surface Use Plan
4. EXHIBIT A: Vicinity and Lease Road Map
5. EXHIBIT B: 7.5 " Quadrangle Topo Map.
6. EXHIBITS C.1 - C.7: Road, Pipeline, and electric line plats
7. EXHIBIT D: Trailer-mounted rig layout
8. BOP & Choke Manifold Specifications
9. H2S Drilling Operations Plan.
10. Surface Owner Settlement Letter

APPROVAL SUBJECT TO  
GENERAL REQUIREMENTS AND  
SPECIAL STIPULATIONS  
ATTACHED

An archeological survey has already been submitted.

Even though this is normally an unorthodox location, as an infill location in a secondary recovery project it will automatically be approved as orthodox according to recently revised NMOCD Rule 104.

IN ABOVE SPACE DESCRIBE PROPOSED PROGRAM: If proposal is to deepen give data on present productive zone and proposed new productive zone. If proposal is to drill or deepen directionally, give pertinent data on subsurface locations and measured and true vertical depths. Give blowout preventer program, if any.

24. SIGNED Jerry W. Hoover TITLE Sr. Conservation Coordinator DATE 3/21/97

(This space for Federal or State office use)

PERMIT NO \_\_\_\_\_ APPROVAL DATE \_\_\_\_\_

Application approval does not warrant or certify that the applicant holds legal or equitable title to those rights in the subject lease which would entitle the applicant to conduct operations thereon.  
CONDITIONS OF APPROVAL, IF ANY:

APPROVED BY (ORIG. SGD.) TONY L. FERGUSON TITLE ADM, MINERALS DATE 4.22.97

\*See Instructions On Reverse Side

District I  
PO Box 1980, Hobbs, NM 88241-1980

District II  
PO Drawer DD, Artesia, NM 88211-0719

District III  
1000 Rio Brazos Rd., Aztec, NM 87410

District IV  
PO Box 2088, Santa Fe, NM 87504-2088

State of New Mexico  
Energy, Minerals & Natural Resources Department

OIL CONSERVATION DIVISION  
PO Box 2088  
Santa Fe, NM 87504-2088

Form C-102  
Revised February 21, 1994  
Instructions on back  
Submit to Appropriate District Office  
State Lease - 4 Copies  
Fee Lease - 3 Copies

AMENDED REPORT

WELL LOCATION AND ACREAGE DEDICATION PLAT

|   |  |  |  |  |                                 |
|---|--|--|--|--|---------------------------------|
| <sup>1</sup> API Number<br>30-025-33940 |  | <sup>2</sup> Pool Code<br>62965                            |  | <sup>3</sup> Pool Name<br>Warren Blinebry-Tubb |                                 |
| <sup>4</sup> Property Code<br>003127    |  | <sup>5</sup> Property Name<br>WARREN UNIT Blinebry-Tubb WF |  |  | <sup>6</sup> Well Number<br>205 |
| <sup>7</sup> OGRID No.<br>005073        |  | <sup>8</sup> Operator Name<br>CONOCO INC.                  |  |  | <sup>9</sup> Elevation<br>3519' |

<sup>10</sup>Surface Location

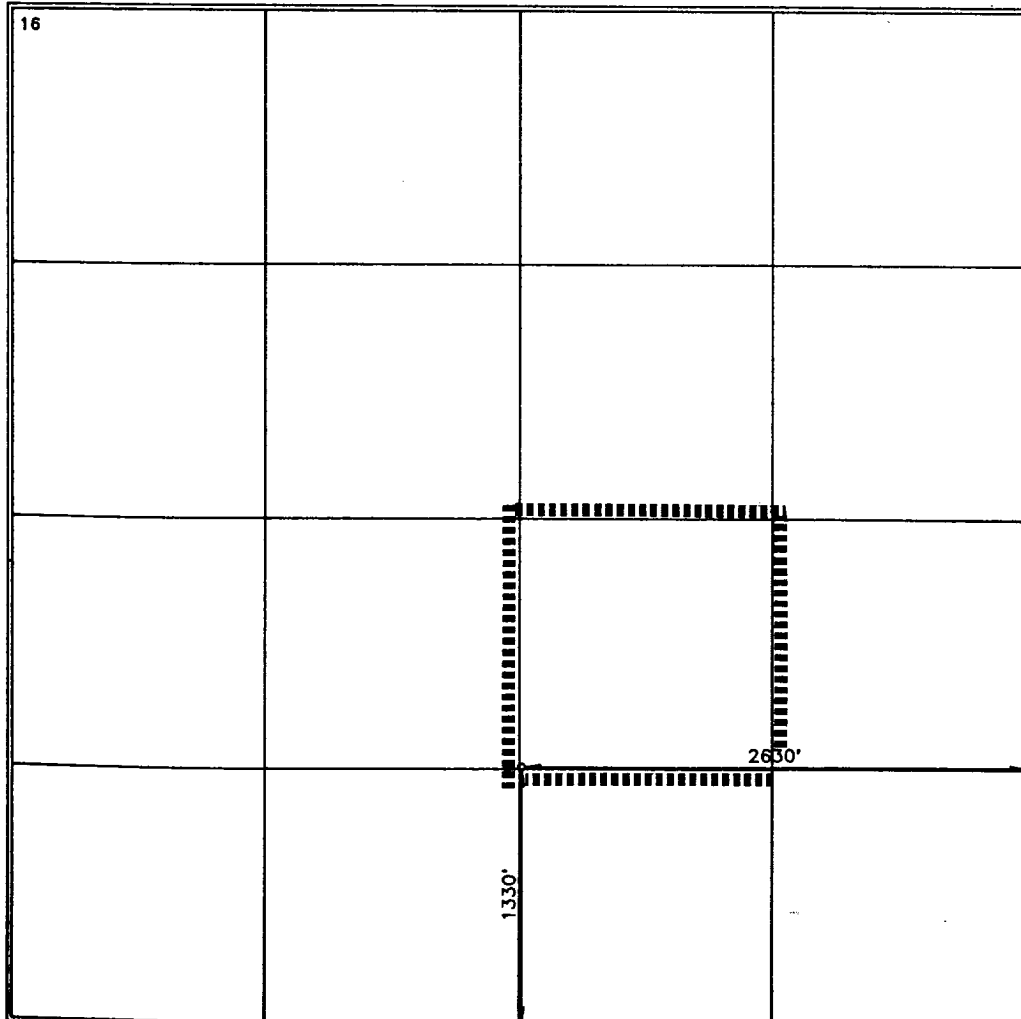
| UL or lot no. | Section | Township | Range | Lot Idn | Feet from the | North/South line | Feet from the | East/West line | County |
|---------------|---------|----------|-------|---------|---------------|------------------|---------------|----------------|--------|
| J             | 34      | 20-S     | 38-E  |         | 1330          | SOUTH            | 2630          | EAST           | LEA    |

<sup>11</sup>Bottom Hole Location If Different From Surface

| UL or lot no. | Section | Township | Range | Lot Idn | Feet from the | North/South line | Feet from the | East/West line | County |
|---------------|---------|----------|-------|---------|---------------|------------------|---------------|----------------|--------|
|               |         |          |       |         |               |                  |               |                |        |

|                                     |                               |                                  |                         |
|-------------------------------------|-------------------------------|----------------------------------|-------------------------|
| <sup>12</sup> Dedicated Acres<br>40 | <sup>13</sup> Joint or Infill | <sup>14</sup> Consolidation Code | <sup>15</sup> Order No. |
|-------------------------------------|-------------------------------|----------------------------------|-------------------------|

NO ALLOWABLE WILL BE ASSIGNED TO THIS COMPLETION UNTIL ALL INTERESTS HAVE BEEN CONSOLIDATED OR A NON-STANDARD UNIT HAS BEEN APPROVED BY THE DIVISION



<sup>17</sup> OPERATOR CERTIFICATION

I hereby certify that the information contained herein is true and complete to the best of my knowledge and belief.


*Jerry W. Hoover*  
Signature  
JERRY W. HOOVER  
Printed Name  
SR. CONSERVATION COORDINATOR  
Title  
3/20/97  
Date

<sup>18</sup> SURVEYOR CERTIFICATION

I hereby certify that the well location shown on this plat was plotted from field notes of actual surveys made by me or under my supervision, and that the same is true and correct to best of my belief.

JANUARY 22, 1997  
Date of Survey

*Earl Foote*  
Signature and Seal of Registered Professional Surveyor



Certificate Number 8278

# PROPOSED WELL PLAN OUTLINE

WELL NAME  
LOCATION

**WARREN UNIT B-T NO. 205**  
**1330' FSL & 2630' FEL, SEC. 34, T-20S, R-38E, LEA CO.**

| TVD IN 1000' | MD | FORMATION TOPS & TYPE   | DRILLING PROBLEMS                            | TYPE OF FORMATION EVALUATION  | HOLE SIZE | CASING   |       | FRAC GRAD | FORMATION PRESSURE GRADIENT     | MUD WT    | MUD TYPE      | DAY |
|--------------|----|---|--|---|-----------|--|-------|-----------|---------------------------------|-----------|---------------|-----|
|              |    |   |  |   |           | SIZE   | DEPTH |           |                                 |           |               |     |
| 0            |    |   | POSSIBLE HOLE ENLARGEMENT AND SLOUGHING      |   | 12-1/4"   |  |       |           | NORMAL                          | 8.4 - 9.5 | FRESH         |     |
| 1            |    | RUSTLER 1430'   | WASHOUTS IN SALT SECTION F/1400' - 2700'     |   | 7-7/8"    | 8-5/8"<br>24#, K-55, ST&C<br>705 sx, circ cmt    | 1500' |           |                                 | 10        | BRINE         | 3   |
| 2            |    | YATES 2770'   |  |   |           |  |       |           |                                 |           |               |     |
| 3            |    | SEVEN RIVERS 3030'  |  |   |           |  |       |           |                                 |           |               |     |
|              |    | QUEEN 3567'<br>PENROSE 3785'                                      |  | MUDLOGGERS ON @ 3500'<br>H2S MONITOR ON @ 3500'   |           |  |       |           |                                 |           |               |     |
| 4            |    | GRAYBURG 3960'<br>SAN ANDRES 4131'                                | POSSIBLE LOSSES AND SEEPAGE TO TOTAL DEPTH   |   |           |  |       |           | LESS THAN 8.3                   |           |               | 6   |
| 5            |    | GLORIETA 5347'  | CASES OF DIFFERENT STICKING THROUGH GLORIETA |   |           |  |       |           |                                 |           |               |     |
| 6            |    | BLINEBRY MKR. 5885'<br>TUBB 6380'<br>DRINKARD 6680'<br>TD @ 6750' |  |   |           |  |       |           |                                 |           |               |     |
| 7            |    |   |  | GR-CAL-DLL-MLL and FDC-CNL-PE-Spect GR 2750'-TD. Pull GR-CAL-CNL to surface. Only run SG across Blinebry-Tubb |           | 5-1/2"<br>15.5#, K-55, LT&C<br>1250 sx, circ cmt | 6750' |           | LESS THAN 8.3<br>BHP = 2650 psi | 10        | STARCH-GEL@TD | 15  |
| 8            |    |   |  |   |           |  |       |           |                                 |           |               |     |

DATE 11 NOV 1996

APPROVED Roger Williamson  
DRILLING ENGINEER

Joe Miller  
RESERVOIR ENGINEER

**Well Name :** Warren Unit #205

**Location :** 1330' FSL & 2630' FEL Sec 34, T-20S, R-38E, Lea County, New Mexico

**Casing Program :**

**Surface** 8 5/8" casing in 12 1/4" Hole at 1500 ft.

**Production** 5 1/2" casing in 7 7/8" Hole at 6750 ft.

**Cementing Program :**

**Surface**

**Lead** 505 sacks Class C Mixed at 12.7 ppg  
**Additives** 35:65:6 (Poz:Cem:Gel) + 2% CACL2  
+ 0.25 pps Cello-Flake

**Tail** 200 sacks Class C Mixed at 14.8 ppg  
**Additives** 2% A-7P

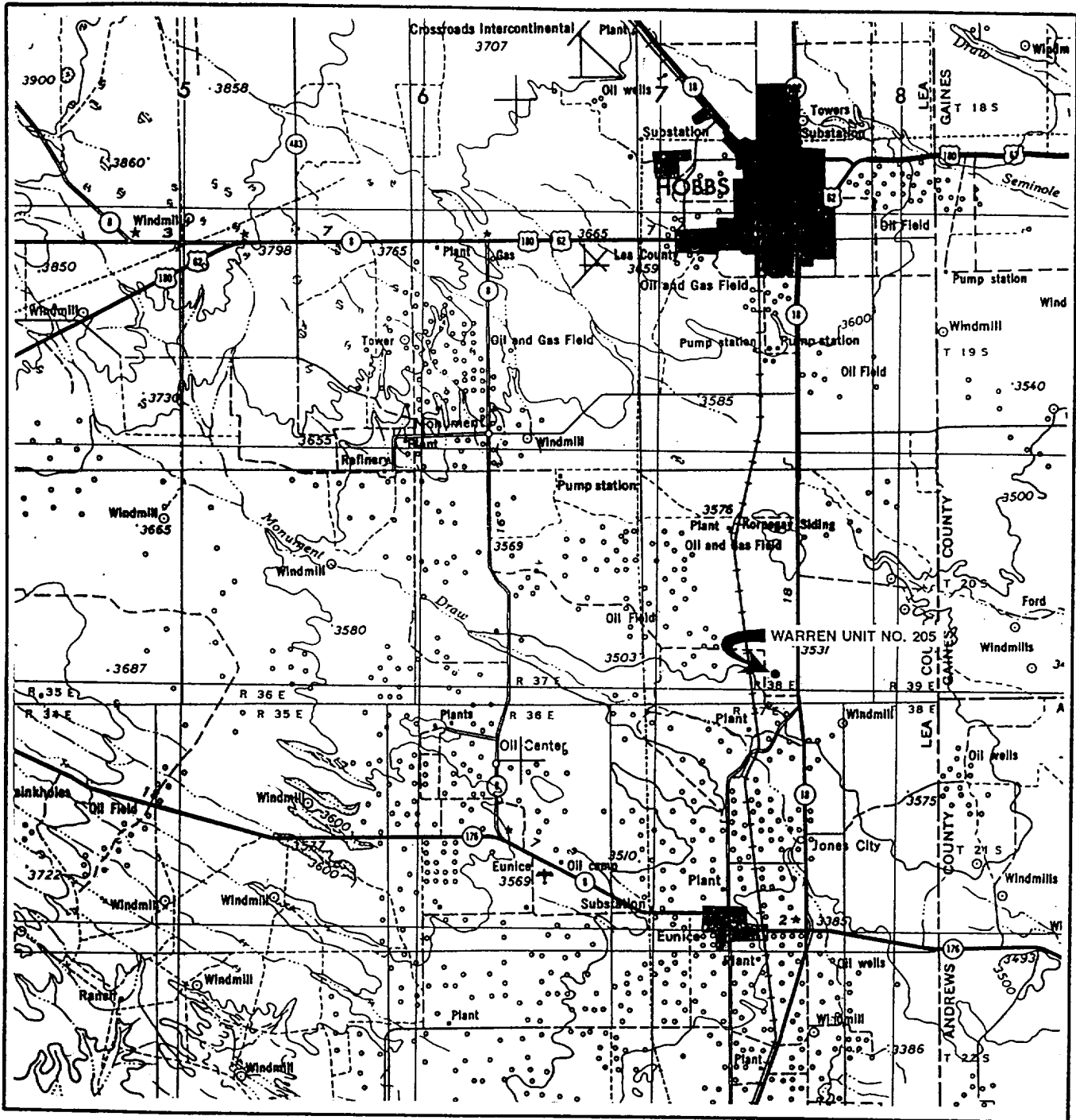
**Production**

**Lead** 585 sacks Class C Mixed at 12 ppg  
**Additives** 16% Gel + 2% Salt + 0.3% CD-32 + 0.3% SMS

**Tail** 665 sacks Class C Mixed at 14.8 ppg  
**Additives** 1.1% FL-62 + 2% BA-90 + 3% Salt + 0.3% CD-32  
+ 0.2% SMS

**Free Water** 0 % **Fluid Loss** 80 cc/30 min.

# VICINITY MAP



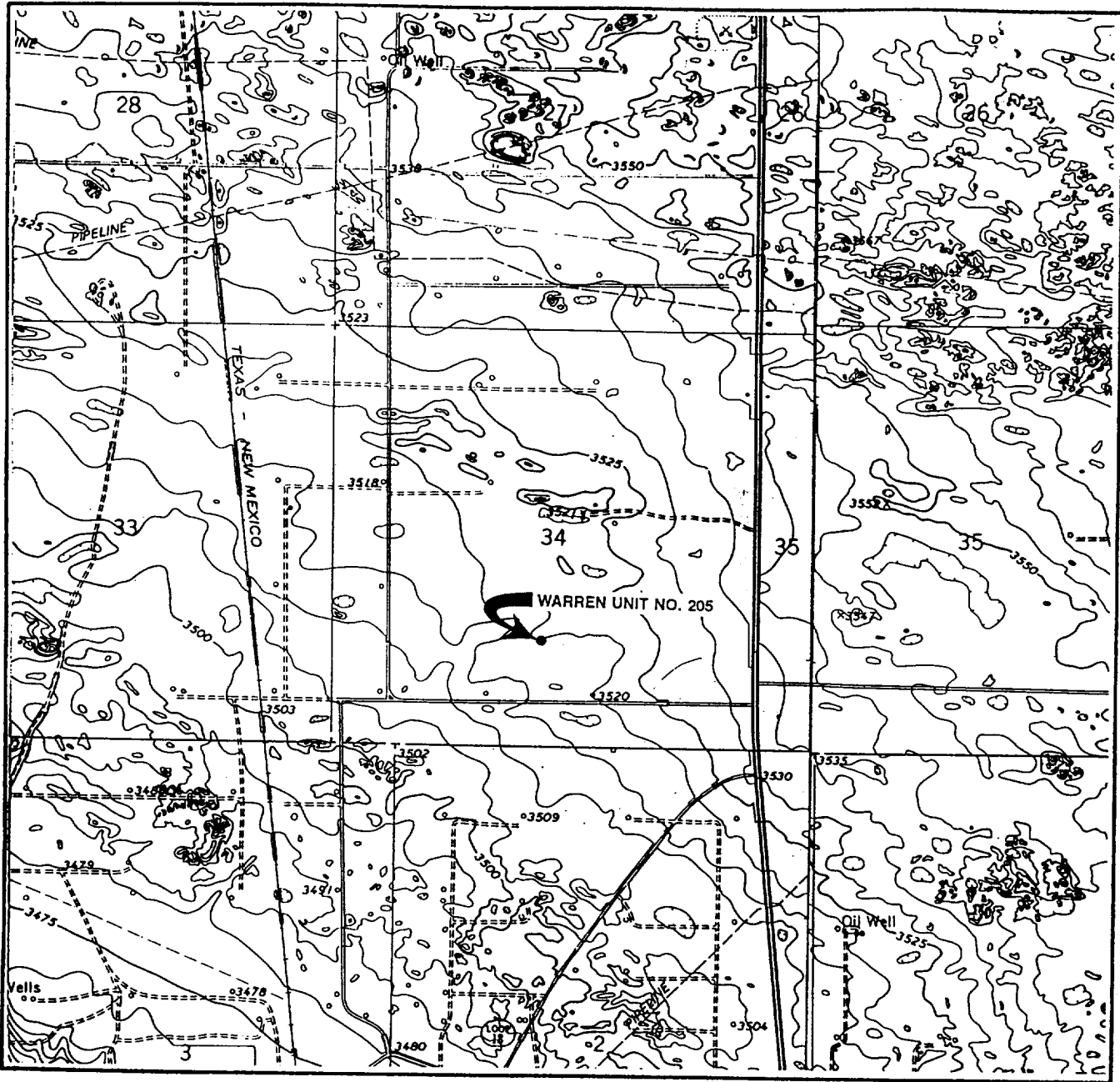
SEC. 34 TWP. 20-S RGE. 38-E  
 SURVEY N.M.P.M  
 COUNTY LEA STATE NM  
 DESCRIPTION 1330' FSL & 2630' FEL  
 ELEVATION 3519'  
 OPERATOR CONOCO INC.  
 LEASE WARREN UNIT NO. 205

SCALE: 1" = 4 MILES

**WEST TEXAS CONSULTANTS, INC.**  
 ENGINEERS-PLANNERS-SURVEYORS  
 MIDLAND, TEXAS  
 915-685-3800

**EXHIBIT A**

# LOCATION VERIFICATION MAP



SCALE: 1" = 2000'

CONTOUR INTERVAL 10'

SEC. 34 TWP. 20-S RGE. 38-E

SURVEY N.M.P.M

COUNTY LEA STATE NM

DESCRIPTION 1330' FSL & 2630' FEL

ELEVATION 3519'

OPERATOR CONOCO INC.

LEASE WARREN UNIT NO. 205

USGS TOPO MAP HOBBS SW, NM

**WEST TEXAS CONSULTANTS, INC.**

ENGINEERS-PLANNERS-SURVEYORS

MIDLAND, TEXAS

915-685-3800

**EXHIBIT B**

# BOP SPECIFICATIONS

