

State of New Mexico  
Energy, Minerals & Natural Resources Department  
District II  
811 South First, Artesia, NM 88210  
District III  
1000 Rio Brazos Rd., Aztec, NM 87410  
District IV  
2040 South Pacheco, Santa Fe, NM 87505

State of New Mexico  
Energy, Minerals & Natural Resources Department  
**OIL CONSERVATION DIVISION**  
2040 South Pacheco  
Santa Fe, NM 87505

Form C-101  
Revised October 18, 1994  
Instructions on back  
Submit to Appropriate District Office  
State Lease - 6 Copies  
Fee Lease - 5 Copies

☐ AMENDED REPORT

**APPLICATION FOR PERMIT TO DRILL, RE-ENTER, DEEPEN, PLUGBACK, OR ADD A ZONE**

Operator Name and Address. PENWELL ENERGY, INC. 600 NORTH MARIENFELD SUITE 1100 MIDLAND, TEXAS 79701		OGRID Number 147380
		API Number 30-025-33972
Property Code 20866	Property Name TUMBLEWEED "5" STATE	Well No. 1

**7 Surface Location**

UL or lot no.	Section	Township	Range	Lot Idn	Feet from the	North/South line	Feet from the	East/West line	County
F	5	24-S	33-E		1980'	North	1980'	West	LEA

**8 Proposed Bottom Hole Location If Different From Surface**

UL or lot no.	Section	Township	Range	Lot Idn	Feet from the	North/South line	Feet from the	East/West line	County

Proposed Pool 1 TRIPLE X BONE SPRING	Proposed Pool 2
---	-----------------

Work Type Code N	Well Type Code O	Cable/Rotary R	Lease Type Code S	Ground Level Elevation 3646'
Multiple NO	Proposed Depth 12,500'	Formation BONE SPRING	Contractor UNKNOWN	Spud Date As soon as approved

**21 Proposed Casing and Cement Program**

Hole Size	Casing Size	Casing weight/foot	Setting Depth	Sacks of Cement	Estimated TOC
25'	20"	Conductor	40'	Redi-mix	Surface
17 1/2"	13 3/8"	48	600'	450 Sx.	Surface
11"	8 5/8"	32	5200'	1500 Sx.	Surface
7 7/8"	5 1/2"	17	12,500'	1900 Sx.	5000'

" Describe the proposed program. If this application is to DEEPEN or PLUG BACK give the data on the present productive zone and proposed new productive zone. Describe the blowout prevention program, if any. Use additional sheets if necessary.

1. Drill 25" hole to 40'. Set 40' of 20" conductor pipe. Cement to surface with Redi-mix.
2. Drill 17-1/2" hole to 600'. Run and set 600' of 13-3/8" H-40 48# ST&C casing. Cement with 300 sx Class "C" + 1/4# Flocele/sx + 2% CaCl. Tail in with 150 sx Class "C" neat. Circulate cement to surface.
3. Drill 11" hole to 5200'. Run and set 5200' of 8-5/8" J-55 32# ST&C casing. Cement with 1200 sx Class "C" Halco Light + 10# salt/sx + 3# Gilsonite/sx + 1/4# Flocele/sx. Tail in with 300 sx Class "C" + 2% CaCl, circulate cement to surface.
4. Drill 7-7/8" hole to 12,500'. Run and set 12,500' of 5-1/2" P-110-N-80 17# LT&C 8 -R & Buttrass casing. Cement in 2 stages. DV tool @ 9000' ± cement 1st stage: with 400 sx Halco Light + additives, tail in with 300 sx Class "H" + additives. 2nd stage: with 1000 sx class "C" Halco Light tail in with 200 sx Class "C" neat. Top cement estimate 5000'.

" I hereby certify that the information given above is true and complete to the best of my knowledge and belief.

Signature:

Printed name:

Joe T. Janica

Title: Agent

Date: 05/17/97

Phone: 505-392-2112

**OIL CONSERVATION DIVISION**

Approved by:

Orig. Signed by

Paul Kautz

Title:

Geologist

Approval Date: MAY 21 1997

Expiration Date:

Conditions of Approval:

Attached ☐

Permit Expires 1 Year From Approval  
Date Unless Drilling Underway

DISTRICT I  
P.O. Box 1980, Hobbs, NM 88240

State of New Mexico  
Energy, Minerals and Natural Resources Department

Form C-102  
Revised February 10, 1994  
Instruction on back  
Submit to Appropriate District Office  
State Lease - 4 Copies  
Fee Lease - 3 Copies

DISTRICT II  
P.O. Drawer DD, Artesia, NM 88210

OIL CONSERVATION DIVISION

P.O. Box 2088  
Santa Fe, New Mexico 87504-2088

DISTRICT III  
1000 Rio Brazos Rd., Aztec, NM 87410

☐ AMENDED REPORT

WELL LOCATION AND ACREAGE DEDICATION PLAT

API Number <b>30-025-33972</b>	Pool Code 59900	Pool Name TRIPLE X BONE SPRING
Property Code <b>20866</b>	Property Name Tumbleweed 5 State	Well Number 1
OGRID No. 147380	Operator Name Penwell Energy Inc.	Elevation 3646'

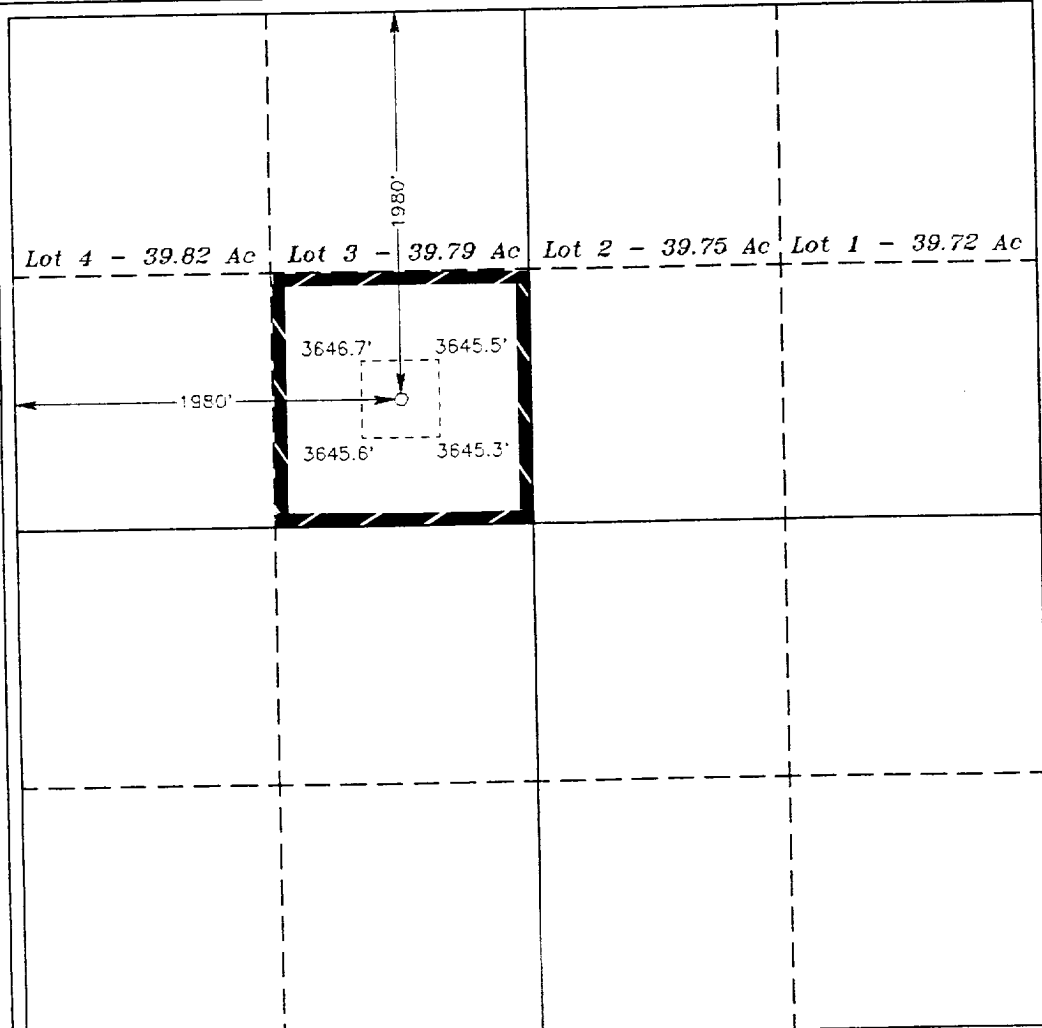
Surface Location

UL or lot No.	Section	Township	Range	Lot Idn	Feet from the	North/South line	Feet from the	East/West line	County
F	5	24 S	33 E		1980	North	1980	West	Lea

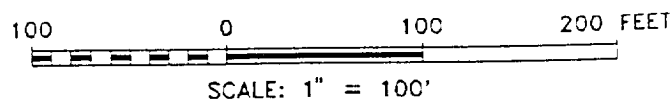
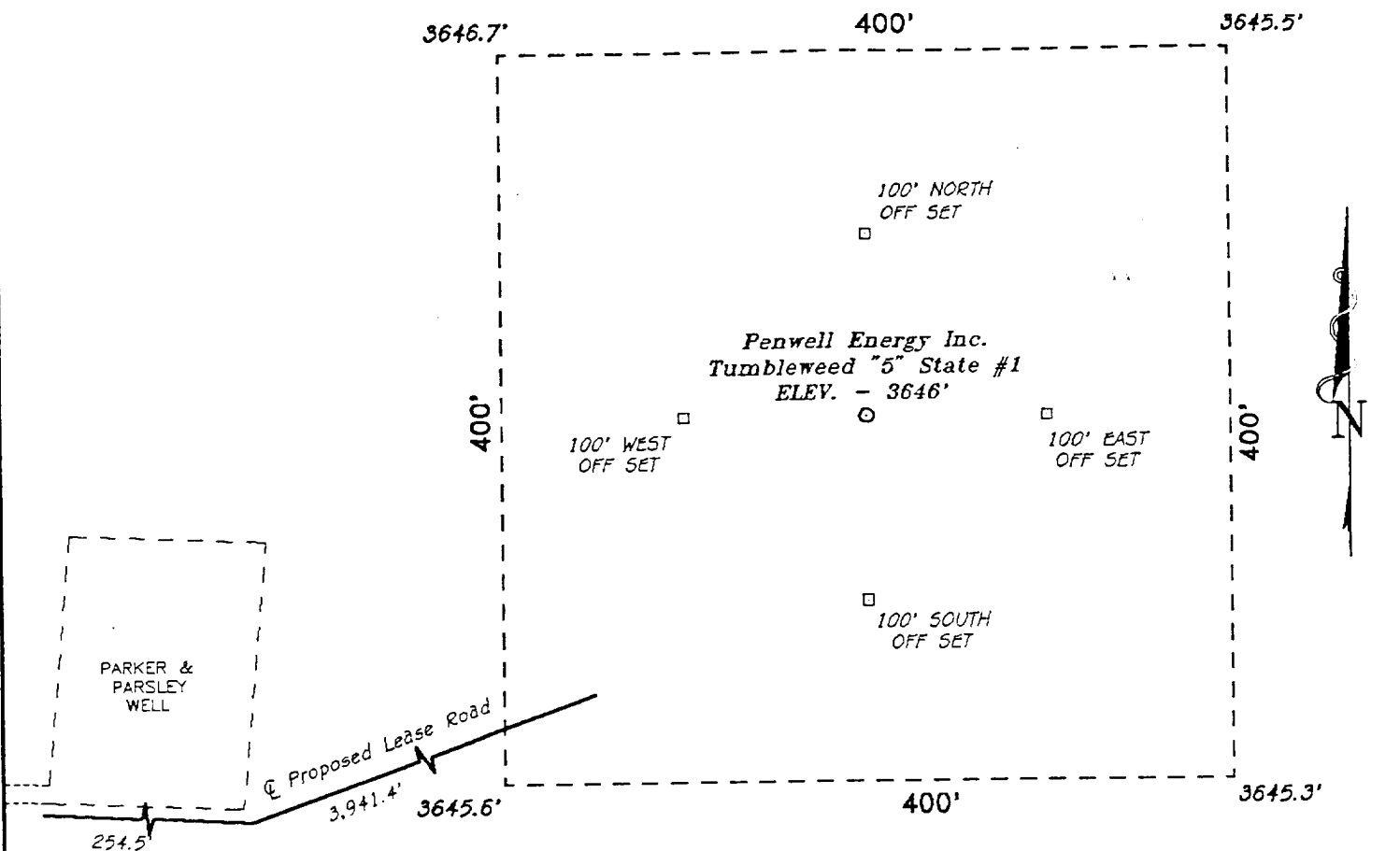
Bottom Hole Location If Different From Surface

UL or lot No.	Section	Township	Range	Lot Idn	Feet from the	North/South line	Feet from the	East/West line	County
Dedicated Acres 40		Joint or Infill		Consolidation Code		Order No.			

NO ALLOWABLE WILL BE ASSIGNED TO THIS COMPLETION UNTIL ALL INTERESTS HAVE BEEN CONSOLIDATED  
OR A NON-STANDARD UNIT HAS BEEN APPROVED BY THE DIVISION

	<p>OPERATOR CERTIFICATION</p> <p>I hereby certify the the information contained herein is true and complete to the best of my knowledge and belief.</p> <p><i>Joe T Janica</i> Signature Joe T Janica Printed Name Agent Title 05/17/97 Date</p> <p>SURVEYOR CERTIFICATION</p> <p>I hereby certify that the well location shown on this plat was plotted from field notes of actual surveys made by me or under my supervision and that the same is true and correct to the best of my belief.</p> <p>May 9, 1997 Date Surveyed Signature &amp; Seal of Professional Surveyor Professional Surveyor No. 7278 Certificate No. 7977 BASIN SURVEYS</p>
---	---

SECTION 5, TOWNSHIP 24 SOUTH, RANGE 33 EAST, N.M.P.M.,  
LEA COUNTY, NEW MEXICO.



DIRECTIONS

FROM THE INTERSECTION OF DELAWARE BASIN ROAD AND  
COUNTY ROAD 129, GO WEST 4 3/4 MILES TO A PIPELINE  
ROAD GOING NORTHWEST, TURN RIGHT ON PIPELINE ROAD  
AND GO 3 MILES TO A LEASE ROAD TO THE EAST, GO  
EAST ON LEASE ROAD 1.2 MILES TO PROPOSED LEASE ROAD

**BASIN SURVEYS** P.O. BOX 1786—HOBES, NEW MEXICO

W.O. Number: 7279 Drawn By: S.C. NICHOLS

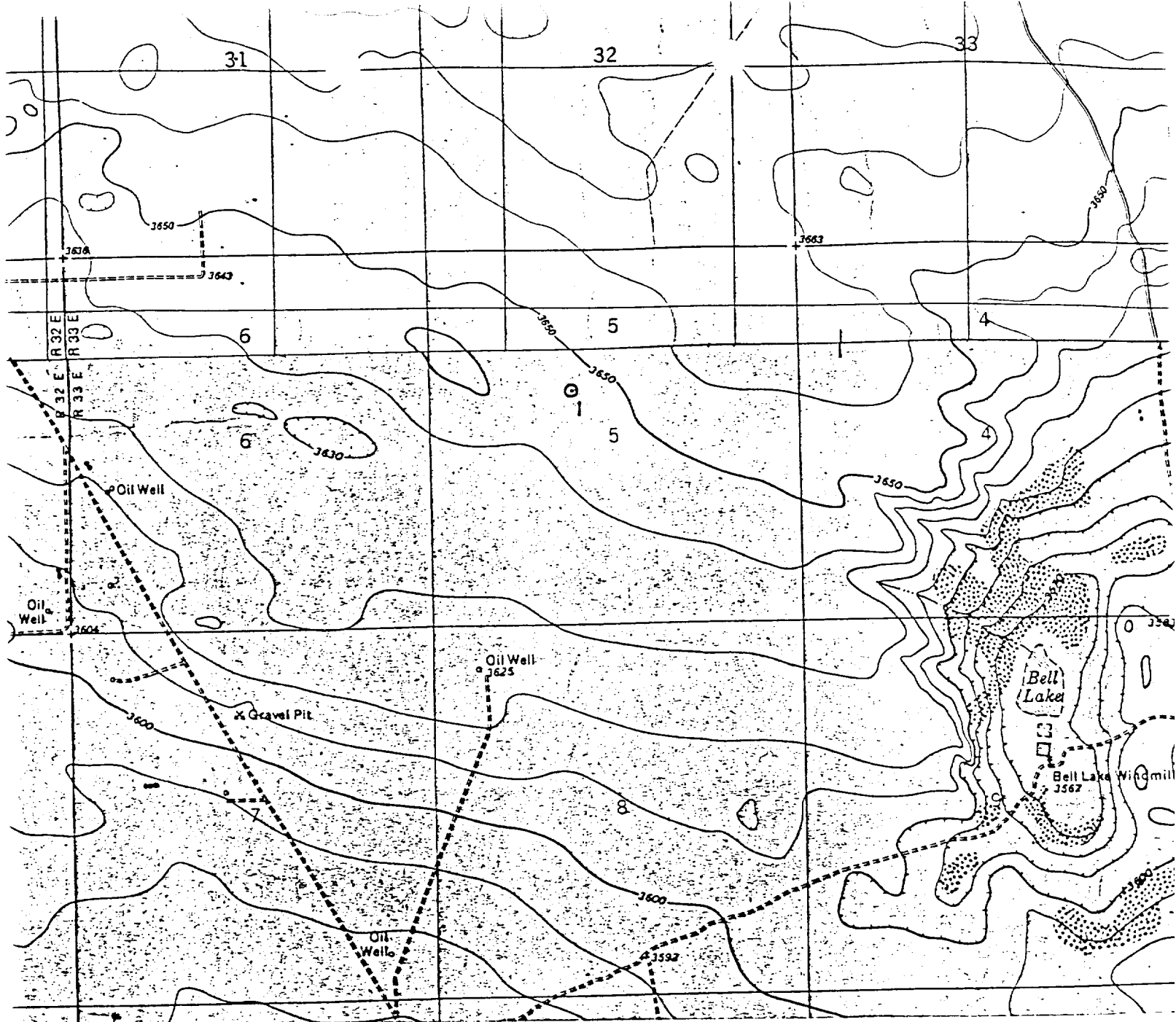
Date: 05-12-97 Disk: SCN #34 - 7279AA.DWG

**Penwell Energy Inc.**

REF: Tumbleweed "2" State No. 1 / Well Pad Topc

THE TUMBLEWEED "5" STATE No. 1 LOCATED 1980' FROM  
THE NORTH LINE AND 1980' FROM THE WEST LINE OF  
SECTION 5, TOWNSHIP 24 SOUTH, RANGE 33 EAST,  
N.M.P.M., LEA COUNTY, NEW MEXICO.

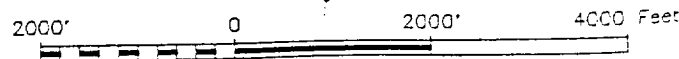
Survey Date: 05-09-97 Sheet 1 of 1 Sheets



PENWELL ENERGY INC.  
 TUMBLEWEED "5" STATE No. 1  
 1980' FNL & 1980' FWL  
 Sec. 5, T-24-S, R-33-E,  
 Lea County, New Mexico.



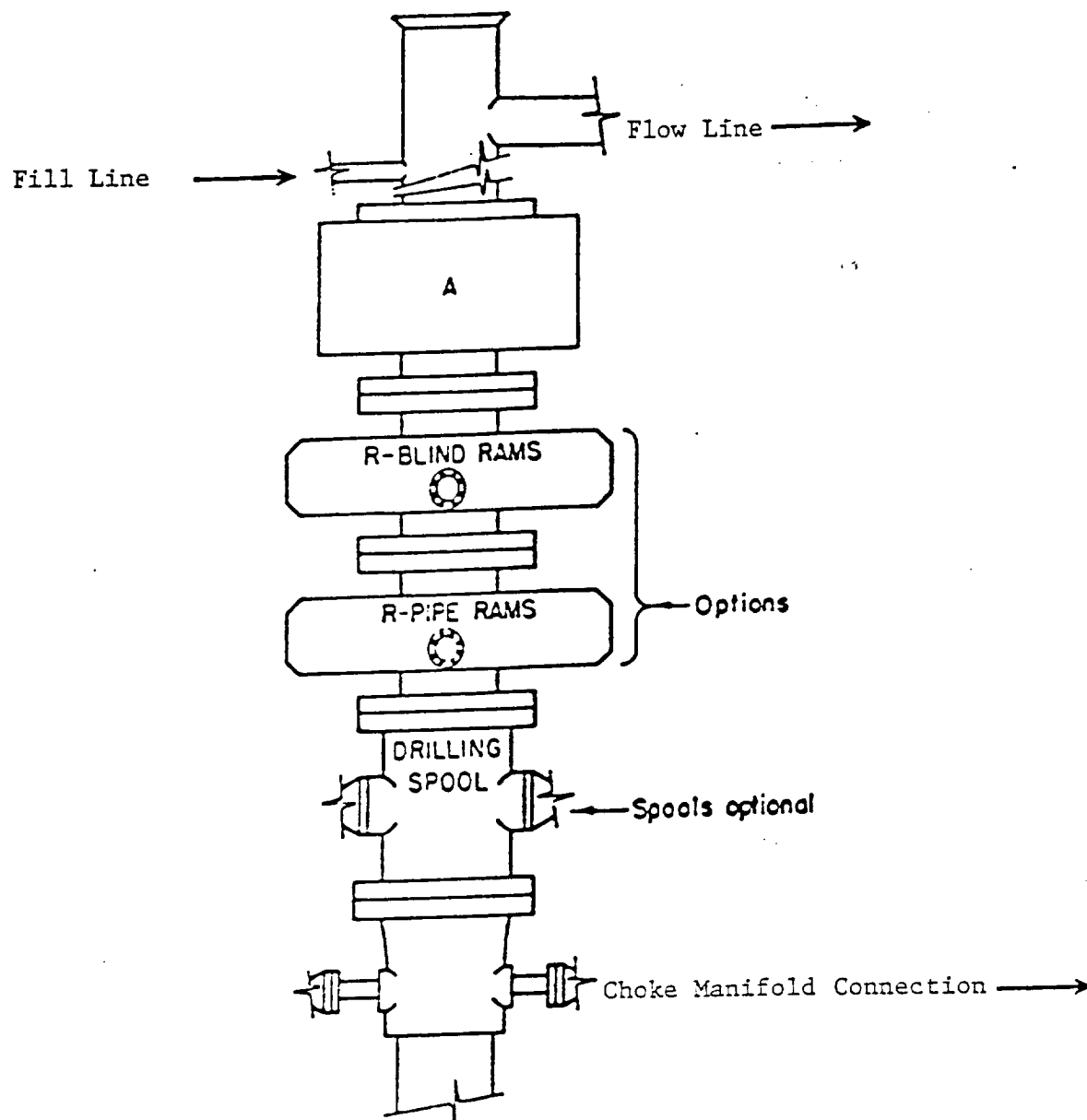
SCALE: 1"=2000'



**BASIN SURVEYS**

P.O. BOX 1786-HOBBS, NEW MEXICO

W.O. Number: 7279	Drawn By: S.C. Nichols	Survey Date: 05-09-97	Sheet 1 of 1 Sheets
-------------------	------------------------	-----------------------	---------------------



# **ARRANGEMENT SRRA**

1500 Series  
5000 PSI WP