

District I
PO Box 1980, Hobbs, NM 88241-1980
District II
811 S. 1st Street, Artesia, NM 88210-2834
District III
1000 Rio Brazos Rd., Aztec, NM 87410
District IV
2040 South Pacheco, Santa Fe, NM 87505

State of New Mexico
Energy, Minerals & Natural Resources Department

OIL CONSERVATION DIVISION
2040 South Pacheco
Santa Fe, NM 87505

Form C-101

Revised October 18, 1994

Instructions on back

Submit to Appropriate District Office

State Lease - 6 Copies

Fee Lease - 5 Copies

☐ AMENDED REPORT

APPLICATION FOR PERMIT TO DRILL, RE-ENTER, DEEPEN, PLUGBACK, OR ADD A ZONE

¹ Operator name and Address Pioneer Natural Resources USA, Inc. P.O. Box 3178, Midland, TX 79702		² OGRID Number 036324
		³ API Number 30-0 25-34166
⁴ Property Code 21715	⁵ Property Name Malcom Madera	
		⁶ Well No. 1

⁷ Surface Location									
UL or lot no.	Section	Township	Range	Lot. Idn	Feet from the	North/South Line	Feet from the	East/West line	County
G	27	26S	33E		1980	North	1980	East	Lea

⁸ Proposed Bottom Hole Location If Different From Surface

UL or lot no.	Section	Township	Range	Lot. Idn	Feet from the	North/South Line	Feet from the	East/West line	County
⁹ Proposed Pool 1 Wildcat (Bone Spring)					¹⁰ Proposed Pool 2				

¹¹ Work Type Code N	¹² Well Type Code O	¹³ Cable/Rotary R	¹⁴ Lease Type Code P	¹⁵ Ground Level Elevation 3281
¹⁶ Multiple No	¹⁷ Proposed Depth 12,800'	¹⁸ Formation Bone Spring	¹⁹ Contractor Lakota Drlg. Co.	²⁰ Spud Date 10/24/97

²¹ Proposed Casing and Cement Program

Hole Size	Casing Size	Casing weight/foot	Setting Depth	Sacks of Cement	Estimated TOC
14 3/4	11 3/4	42	850'	400	surface
11	8 5/8	32	4850'	1200	2000
7 7/8	5 1/2	17 & 23	12,800	1200	4500

²² Describe the proposed program. If this application is to DEEPEN or PLUG BACK give the data on the present productive zone and proposed new productive zone. Describe the blowout prevention program, if any. Use additional sheets if necessary

Propose to drill a Bone Spring well to 12,800'. Cement will be circulated to surface on 11 3/4" and to 2000' on 8 5/8" casing string. Plan to test significant shows and evaluate with adequate logging program. Completion or abandonment will be performed in accordance with prudent practices and regulatory requirements. A double ram series 900 BOP and choke manifold will be used from 8 5/8" casing to total depth.

Permit Expires 1 Year From Approval
Date Unless Drilling Underway

²³ I hereby certify that the information given above is true and complete to the best of my knowledge and belief.

Signature:

Michael Lyon

Printed name: Michael Lyon

Title: Operations Engineer

OIL CONSERVATION DIVISION

Approved by:

ORIGINAL SIGNED BY CHRIS WILLIAMS

Title:

DISTRICT I SUPERVISOR

Approval

DATE: OCT 23 1997

Expiration Date:

DISTRICT I
P.O. Box 1980, Hobbs, NM 88241-1980

DISTRICT II
P.O. Drawer DD, Artesia, NM 88211-0719

DISTRICT III
1000 Rio Brazos Rd., Artec, NM 87410

DISTRICT IV
P.O. Box 2088, Santa Fe, NM 87504-2088

State of New Mexico

Energy, Minerals and Natural Resources Department

Form C-102

Revised February 10, 1994
Submit to Appropriate District Office

State Lease - 4 Copies
Fee Lease - 3 Copies

OIL CONSERVATION DIVISION

P.O. Box 2088
Santa Fe, New Mexico 87504-2088

☐ AMENDED REPORT

WELL LOCATION AND ACREAGE DEDICATION PLAT

API Number 30-025-3466	Pool Code ✓	Pool Name Wildcat (Bone Spring)
Property Code 21715	Property Name MALCOM MADERA	Well Number 1
OGRID No. 036324	Operator Name Pioneer Natural Resources USA, Inc.	Elevation 3281

Surface Location

UL or lot No.	Section	Township	Range	Lot Idn	Feet from the	North/South line	Feet from the	East/West line	County
G	27	26 S	33 E		1980	NORTH	1980	EAST	LEA

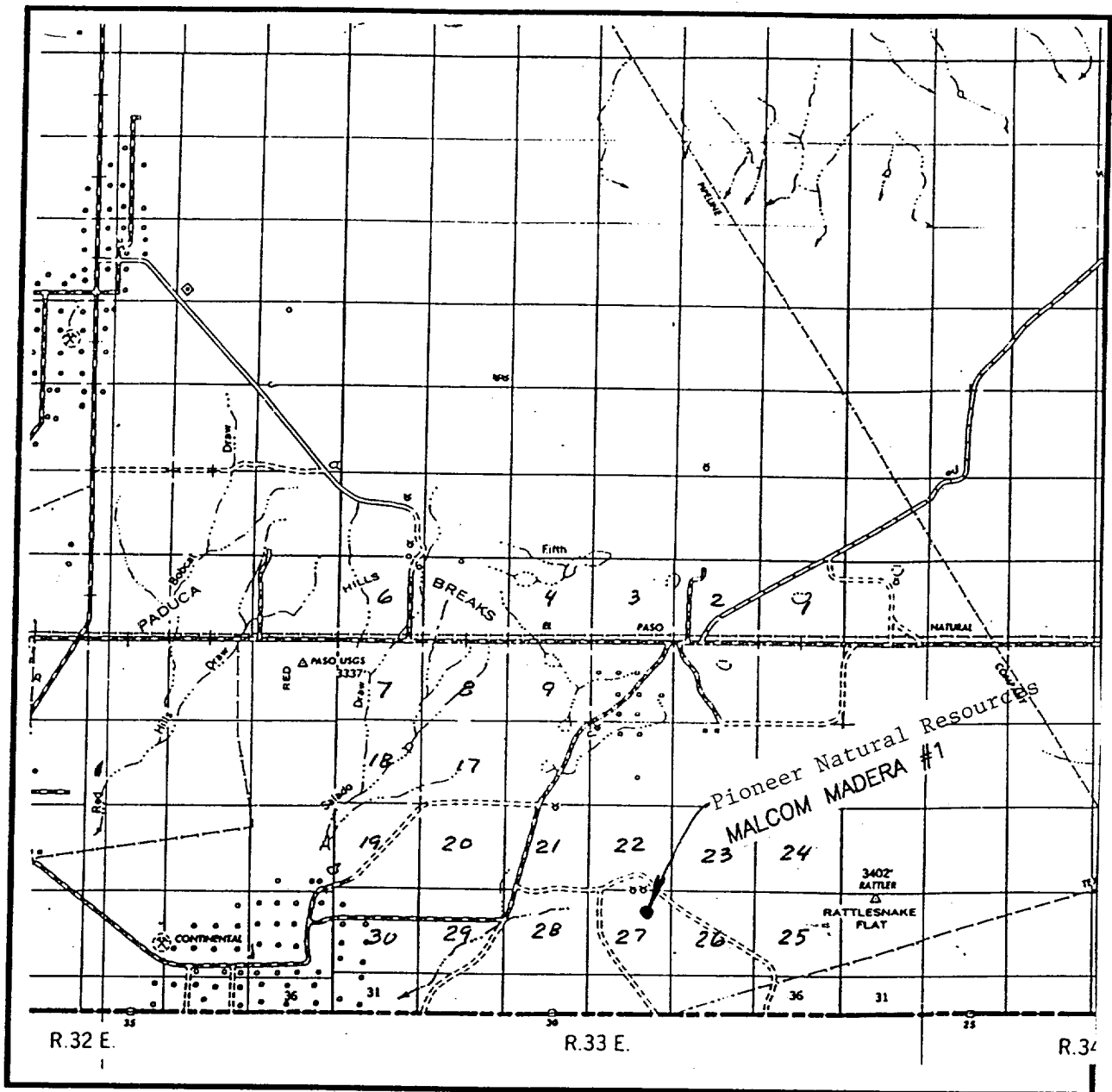
Bottom Hole Location If Different From Surface

UL or lot No.	Section	Township	Range	Lot Idn	Feet from the	North/South line	Feet from the	East/West line	County
Dedicated Acres	Joint or Infill	Consolidation Code	Order No.						

NO ALLOWABLE WILL BE ASSIGNED TO THIS COMPLETION UNTIL ALL INTERESTS HAVE BEEN CONSOLIDATED
OR A NON-STANDARD UNIT HAS BEEN APPROVED BY THE DIVISION

	OPERATOR CERTIFICATION <i>I hereby certify the the information contained herein is true and complete to the best of my knowledge and belief.</i> Signature <i>Jeanie Dodd</i> Printed Name Jeanie Dodd Title Engineering Tech Date 9/25/97
	SURVEYOR CERTIFICATION <i>I hereby certify that the well location shown on this plat was plotted from field notes of actual surveys made by me or under my supervision, and that the same is true and correct to the best of my belief.</i> Date Surveyed JULY 25, 1997 Signature & Seal of Professional Surveyor <i>Ronald J. Eidsen</i> W.G. Num. 97-11240 Certificate No. JOHN ROYCE, 676 RONALD J. EIDSON, 3239 CARL G. EIDSON, 12641

VICINITY MAP



SCALE: 1" = 2 MILES

SEC. 27 TWP. 26-S RGE. 33-E

SURVEY N.M.P.M.

COUNTY LEA

DESCRIPTION 1980' FNL & 1980' FEL

ELEVATION 3281'

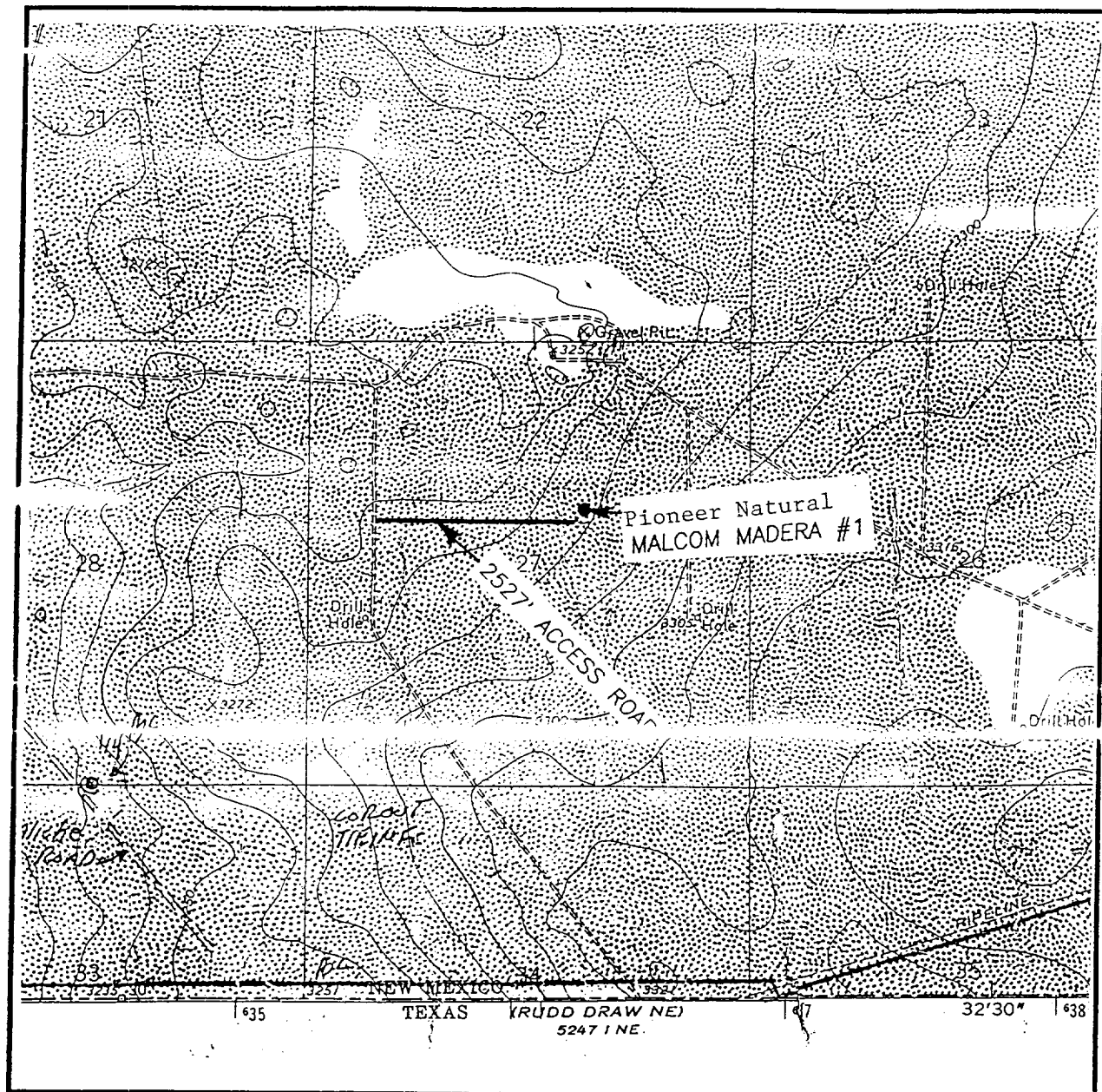
OPERATOR Pioneer Natural Resources

LEASE MALCOM MADERA

JOHN WEST ENGINEERING
HOBBS, NEW MEXICO

(505) 393-3117

LOCATION VERIFICATION MAP



SCALE: 1" = 2000'

CONTOUR INTERVAL - 10'

SEC. 27 TWP. 26-S RGE. 33-E

SURVEY N.M.P.M.

COUNTY LEA

DESCRIPTION 1980' FNL & 1980' FEL

ELEVATION 3281'

OPERATOR Pioneer Natural Resources

LEASE MALCOM MADERA

U.S.G.S. TOPOGRAPHIC MAP

PADUCA BREAKS EAST, N.M.

**JOHN WEST ENGINEERING
HOBBS, NEW MEXICO**

(505) 393-3117