



STATE OF NEW MEXICO
ENERGY, MINERALS AND NATURAL RESOURCES DEPARTMENT
OIL CONSERVATION DIVISION
HOBBS DISTRICT OFFICE

1625 N. FRENCH DRIVE
HOBBS, NM 88240

May 5, 2000

GP II Energy Inc

P O Box 50682

Midland, TX 79710

RE: CANCELLATION OF INTENT TO DRILL

Taylor 6 #1-1

6-14s-38e, 2457/S & 175/E

API #30-025-34287

Gentlemen:

Twelve months or more have elapsed since Division Form C-101, Notice of Intention to drill, for the subject well was approved. To date no progress reports, Forms C-103, have been received. Therefore, approval of your permit to drill this well has now expired and no drilling operations are to be initiated without further notice to and approval by the Oil Conservation Division. Pending such approval, this location will be considered as an abandoned location.

Very truly yours,

OIL CONSERVATION DIVISION

Chris Williams
District I, Supervisor

CW:dp

cc: OCD Santa Fe
BLM
State Land Office
OCD Hobbs well file

8
UDID

JUN 07 2000

District I
PO Box 1980, Hobbs, NM 88241-1980
District II
PO Drawer DD, Artesia, NM 88211-0719
District III
1000 Rio Brazos Rd., Aztec, NM 87410
District IV
PO Box 2088, Santa Fe, NM 87504-2088

State of New Mexico
Energy, Minerals & Natural Resources Department

OIL CONSERVATION DIVISION
PO Box 2088
Santa Fe, NM 87504-2088

Form C-101
Revised February 10, 1994
Instructions on back
Submit to Appropriate District Office
State Lease - 6 Copies
Fee Lease - 5 Copies

☐ AMENDED REPORT

APPLICATION FOR PERMIT TO DRILL, RE-ENTER, DEEPEN, PLUGBACK, OR ADD A ZONE

Operator Name and Address: GP II ENERGY, INC. P. O. BOX 50682 MIDLAND, TX 79710		OGRID Number 008359
		API Number 30-025-34287
Property Code 22428	Property Name TAYLOR 6	Well No. 1

Surface Location

UL or lot no.	Section	Township	Range	Lot Idn	Feet from the	North/South line	Feet from the	East/West line	County
I	6	14S	38E		2457'	SOUTH	175'	EAST	LEA

Proposed Bottom Hole Location If Different From Surface

UL or lot no.	Section	Township	Range	Lot Idn	Feet from the	North/South line	Feet from the	East/West line	County
I	6	14S	38E		1725'	SOUTH	330'	EAST	LEA

Proposed Pool 1	Proposed Pool 2
WILDCAT (DEVONIAN)	

Work Type Code	Well Type Code	Cable/Rotary	Lease Type Code	Ground Level Elevation
N	0	R	FEE	
Multiple	Proposed Depth	Formation	Contractor	Spud Date
NO	12,500'	DEVONIAN	PATTERSON	RIG AVAILABILITY

Proposed Casing and Cement Program

Hole Size	Casing Size	Casing weight/foot	Setting Depth	Sacks of Cement	Estimated TOC
17 1/2"	13 3/8"	48	400	400	SURFACE
11"	8 5/8"	32	4900	1200	SURFACE
7 7/8"	5 1/2"	17 & 20	12500	1200	4500'

Describe the proposed program. If this application is to DEEPEN or PLUG BACK give the data on the present productive zone and proposed new productive zone. Describe the blowout prevention program, if any. Use additional sheets if necessary.

Propose to drill a Devonian well to 12,500'. Cement will be circulated to surface on 13 3/8" and 8 5/8" casing strings. Plan to test significant shows and elevate with adequate logging program. Completion or abandonment will be performed in accordance with prudent practices and regulatory requirements. A double ram series 900 BOP and choke manifold will be used from 8 5/8" casing to total depth.

Permit Expires 1 Year From Approval
Data Unless Drilling Underway

I hereby certify that the information given above is true and complete to the best of my knowledge and belief.

Signature:

Elaine B. McCarty

Printed name:

Elaine B. McCarty

Title:

Agent

Date:

1-28-98

Phone: (915)

684-4748 EXT. 5

OIL CONSERVATION DIVISION

Approved by: CHRIS WILLIAMS

DISTRICT SUPERVISOR

Title:

Approval Date: FEB 05 1998

Expiration Date:

Conditions of Approval:

Attached ☐

RECEIVED
FEB 1999
Received
40 hrs

RECEIVED
FEB 1999
Received
40 hrs

DISTRICT I
P.O. Box 1980, Hobbs, NM 88241-1980

DISTRICT II
P.O. Drawer DD, Artesia, NM 88211-0719

DISTRICT III
1000 Rio Bravos Rd., Aztec, NM 87410

DISTRICT IV
P.O. Box 2088, Santa Fe, NM 87504-2088

State of New Mexico
Energy, Minerals and Natural Resources Department

Form C-102
Revised February 10, 1994
Submit to Appropriate District Office
State Lease - 4 Copies
Fee Lease - 3 Copies

OIL CONSERVATION DIVISION

P.O. Box 2088
Santa Fe, New Mexico 87504-2088

☐ AMENDED REPORT

WELL LOCATION AND ACREAGE DEDICATION PLAT

API Number 30-D25-34287	Pool Code ✓	Pool Name Wildcat Devonian
Property Code 22428	Property Name TAYLOR "6"	Well Number 1
OGRID No. 8359	Operator Name G.P. II ENERGY, INC.	Elevation 3814

Surface Location

UL or lot No.	Section	Township	Range	Lot Idn	Feet from the	North/South line	Feet from the	East/West line	County
1	6	14 S	38 E		2457	SOUTH	175	EAST	LEA

Bottom Hole Location If Different From Surface

UL or lot No.	Section	Township	Range	Lot Idn	Feet from the	North/South line	Feet from the	East/West line	County
1	6	14 S	38 E		1725	SOUTH	330	EAST	LEA

Dedicated Acres	Joint or Infill	Consolidation Code	Order No.
40			

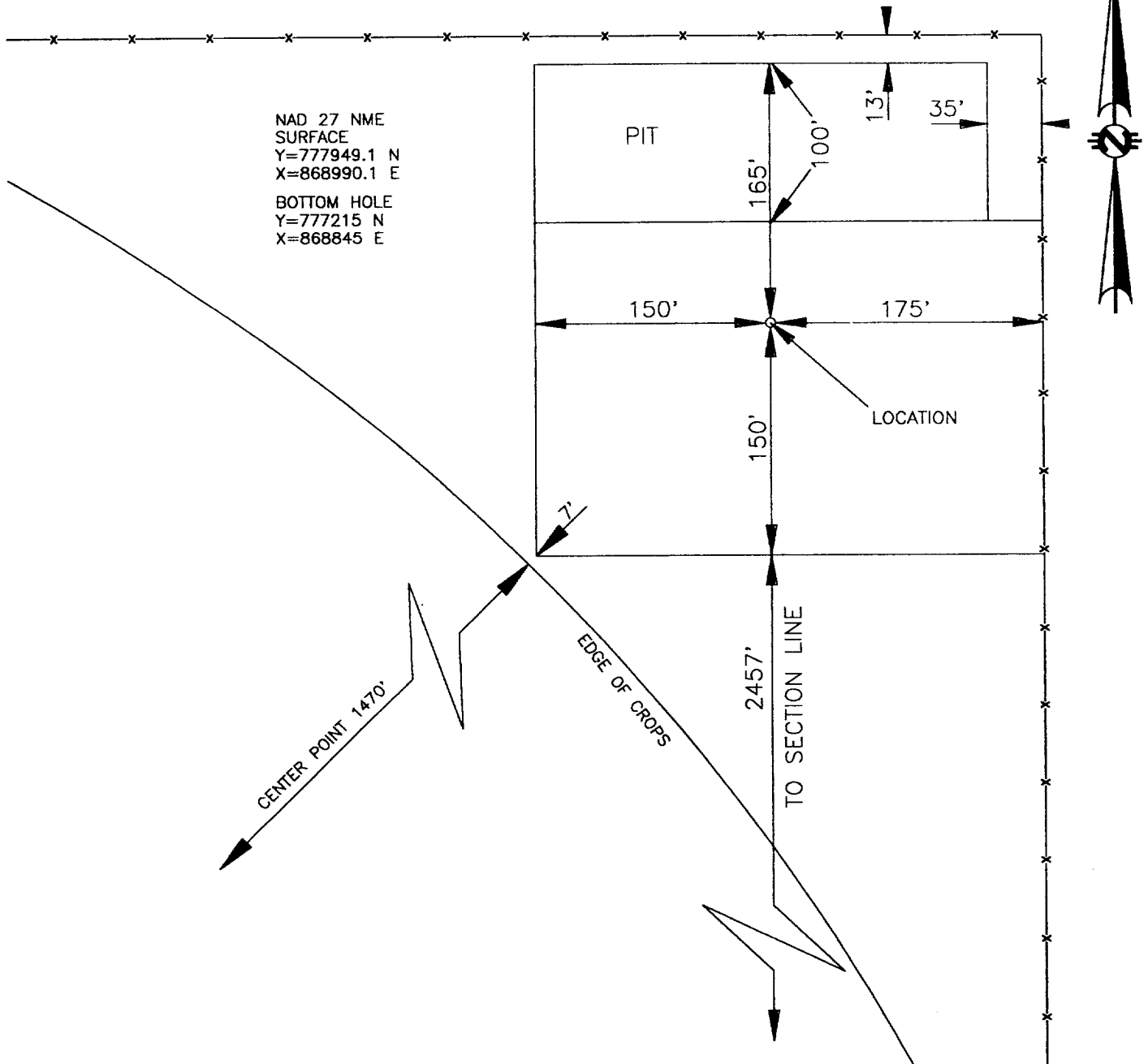
NO ALLOWABLE WILL BE ASSIGNED TO THIS COMPLETION UNTIL ALL INTERESTS HAVE BEEN CONSOLIDATED
OR A NON-STANDARD UNIT HAS BEEN APPROVED BY THE DIVISION

LOT 4 42.33 AC.	LOT 3 42.29 AC.	LOT 2 42.27 AC.	LOT 1 42.23 AC.
		NAD 27 NME SURFACE Y=777949.1 N X=868990.1 E BOTTOM HOLE Y=777215 N X=868845 E	175' 330' 2457' 1725'
OPERATOR CERTIFICATION I hereby certify the information contained herein is true and complete to the best of my knowledge and belief. Signature: <u>Elaine B. McCarty</u> Printed Name: <u>Elaine B. McCarty</u> Agent Title Date: <u>1-28-98</u>			
SURVEYOR CERTIFICATION I hereby certify that the well location shown on this plat was plotted from field notes of actual surveys made by me or under my supervision, and that the same is true and correct to the best of my belief. DECEMBER 8, 1997 Date Surveyed: <u>12-12-97</u> JLP Signature & Seal of Professional Surveyor: <u>Ronald J. Edson</u> W.O. Num. 97-11-1930 Certificate No. RONALD J. EDSON, 3239 CARY G. EDSON, 12841 MACON McDONALD, 12185			



SECTION 6, TOWNSHIP 14 SOUTH, RANGE 38 EAST, N.M.P.M.,
LEA COUNTY NEW MEXICO

NAD 27 NME
SURFACE
Y=777949.1 N
X=868990.1 E
BOTTOM HOLE
Y=777215 N
X=868845 E



100 0 100 200 FEET
SCALE: 1"=100'

I HEREBY CERTIFY THAT THIS PLAT WAS PREPARED
FROM FIELD NOTES OF AN ACTUAL SURVEY AND
MEETS OR EXCEEDS ALL REQUIREMENTS FOR LAND
SURVEYS AS SPECIFIED BY THIS STATE.

Ronald J. Edson 12-12-97
JOHN W. WEST, N.M. P.E. & P.S. No. 676
TEXAS P.L.S. No. 1138
RONALD J. EDSON, N.M. P.L.S. No. 3239
TEXAS P.L.S. No. 1883

JOHN W. WEST ENGINEERING COMPANY
CONSULTING ENGINEERS & SURVEYORS - HOBBS, NEW MEXICO

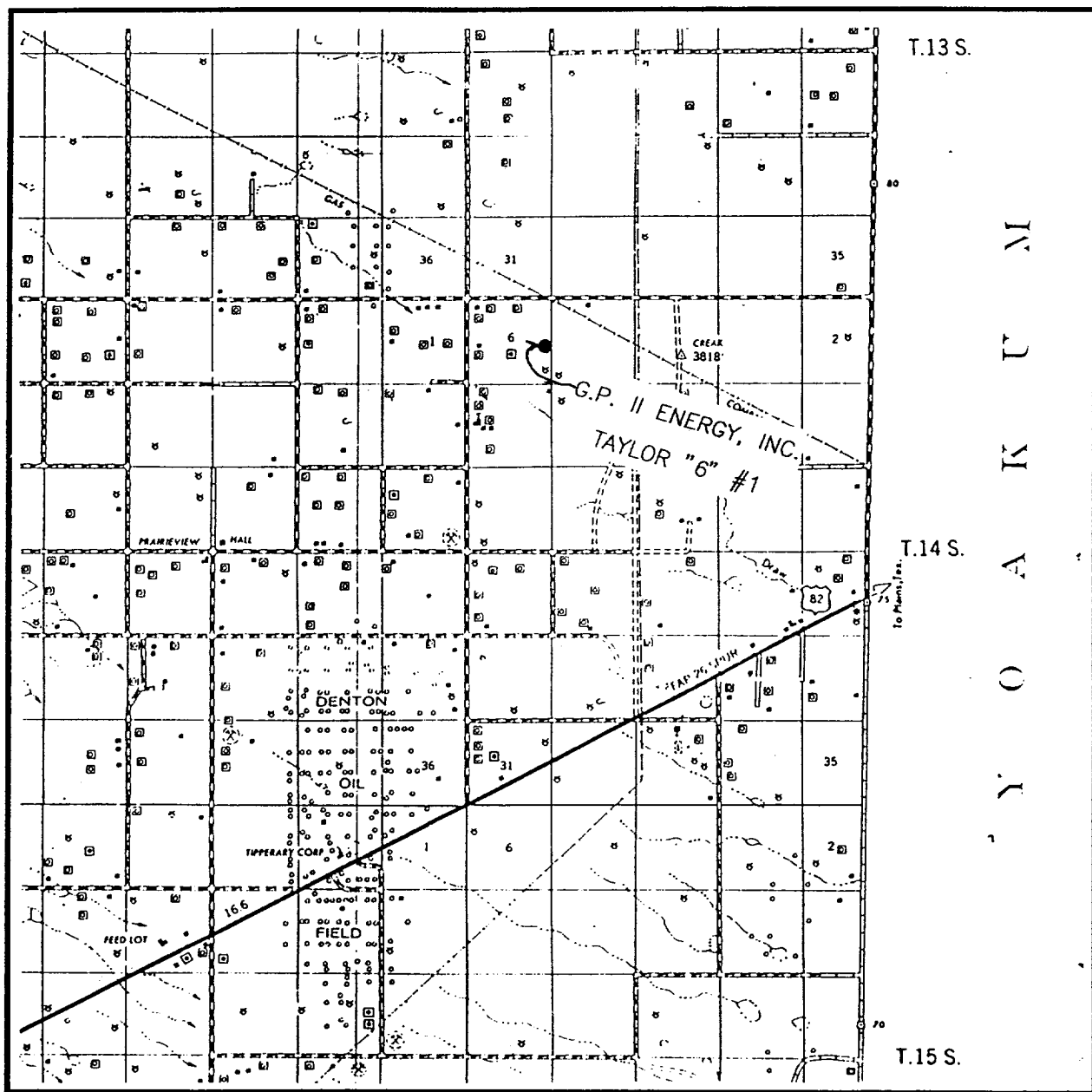
G. P. II ENERGY, INC.

THE TAYLOR "6" #1, SURFACE LOCATION 2457' FSL &
175' FEL, AND THE BOTTOM HOLE LOCATION IN 1725'
FSL & 330' FEL SECTION 6, TOWNSHIP 14 SOUTH,
RANGE 38 EAST, N.M.P.M., LEA COUNTY, NEW MEXICO.

Survey Date: 12/1/97	Sheet 1 of 1 Sheets
W.O. Number: 97-11-1930	Drawn By: JAMES L. PRESLEY
Date: 12/8/97	DISK: JLP#189 GPE1930A



VICINITY MAP



SCALE: 1" = 2 MILES

SEC. 6 TWP. 14-S RGE. 38-E

SURVEY N.M.P.M.

COUNTY LEA

DESCRIPTION 2457' FSL & 175' FEL

ELEVATION 3814'

OPERATOR G.P. II ENERGY, INC.

LEASE TAYLOR "6"

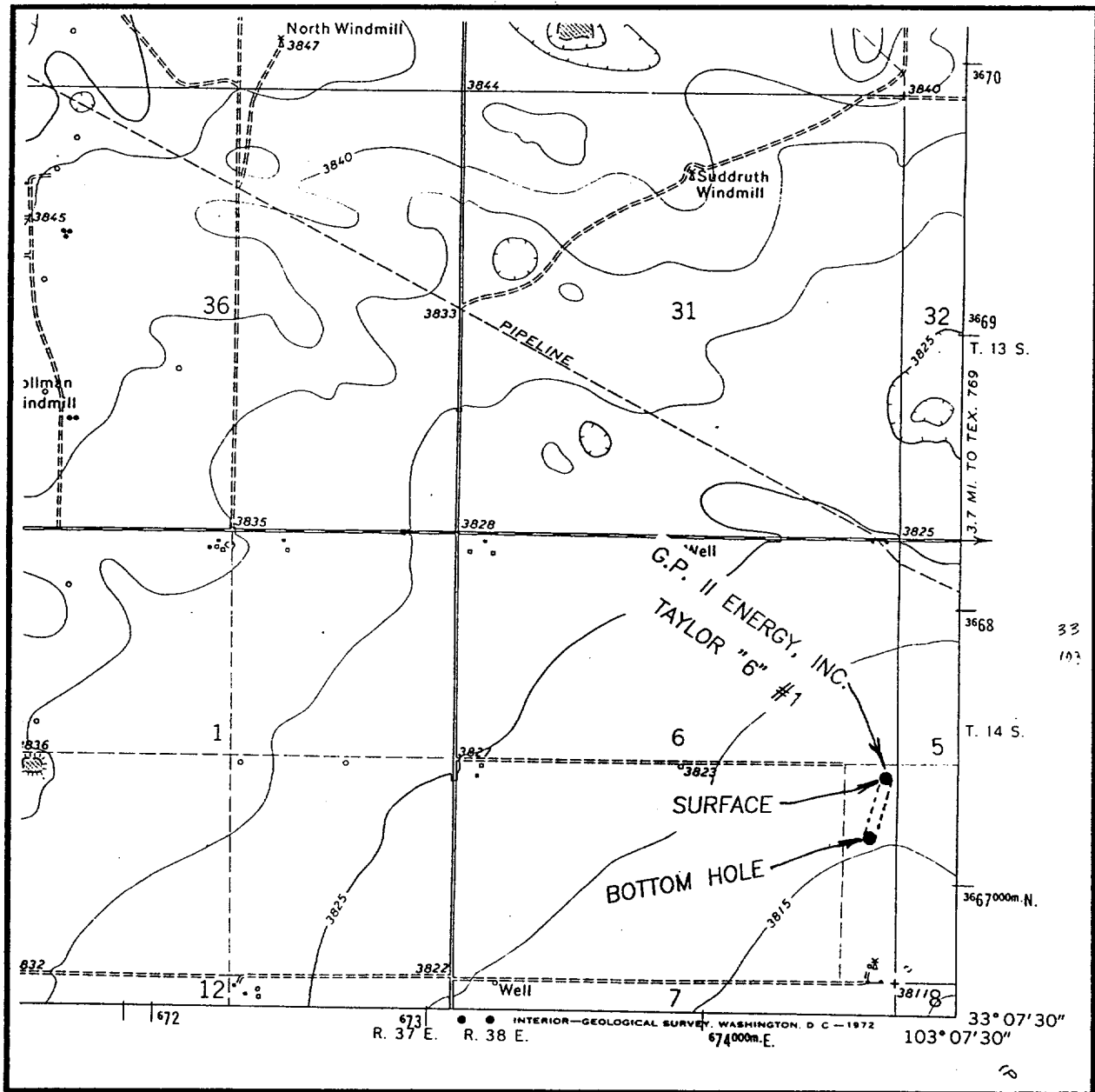
JOHN WEST ENGINEERING
HOBBS, NEW MEXICO
(505) 393-3117

172823
FEB 1998
Received
Hobbs
000

1415151

1415151

LOCATION VERIFICATION MAP



SCALE: 1" = 2000'

CONTOUR INTERVAL — 5'

SEC. 6 TWP. 14-S RGE. 38-E

SURVEY N.M.P.M.

COUNTY LEA

DESCRIPTION 2457' FSL & 175' FEL

ELEVATION 3814'

OPERATOR G.P. II ENERGY, INC.

LEASE TAYLOR "6"

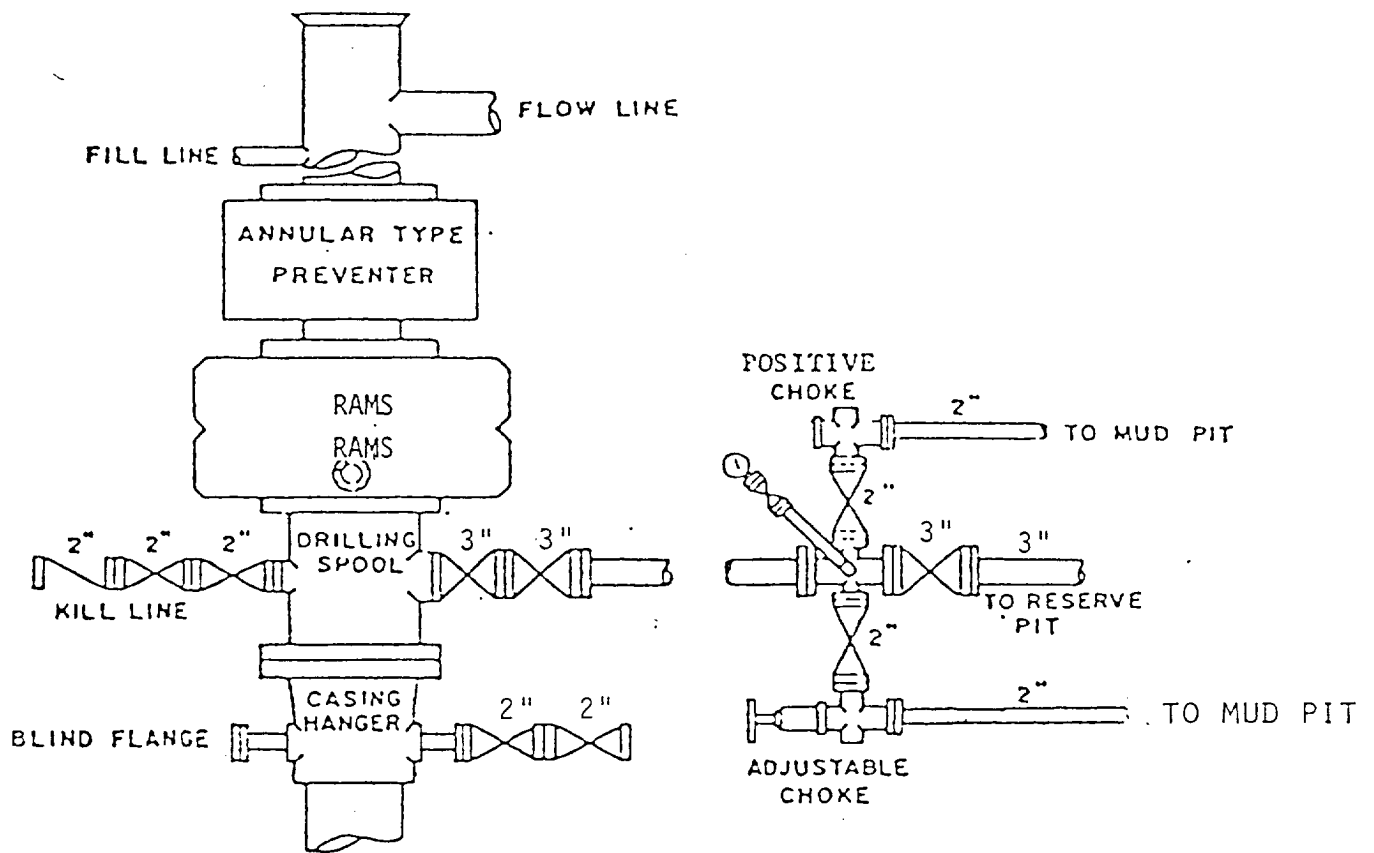
U.S.G.S. TOPOGRAPHIC MAP

PRAIRIEVIEW NW, N.M.

JOHN WEST ENGINEERING
HOBBS, NEW MEXICO
(505) 393-3117

RECEIVED
JUN 10 1964
FBI
RECEIVED
JUN 10 1964
FBI

RECEIVED
JUN 10 1964
FBI
RECEIVED
JUN 10 1964
FBI



BOP STACK

3000 PSI WORKING PRESSURE

BOP ARRANGEMENT