

District I  
PO Box 1980, Hobbs, NM 88241-1980  
District II  
811 South First, Artesia, NM 88210  
District III  
1000 Rio Brazos Rd., Aztec, NM 87410  
District IV  
2040 South Pacheco, Santa Fe, NM 87505

State of New Mexico  
E. J. Minerals & Natural Resources Department

OIL CONSERVATION DIVISION  
2040 South Pacheco  
Santa Fe, NM 87505

Form C-101  
Revised October 18, 1994  
Instructions on back  
Submit to Appropriate District Office  
State Lease - 6 Copies  
Fee Lease - 5 Copies

☐ AMENDED REPORT

APPLICATION FOR PERMIT TO DRILL, RE-ENTER, DEEPEN, PLUGBACK, OR ADD A ZONE

<sup>1</sup> Operator Name and Address. Range Production Company 500 Throckmorton St., Ste. 1900 Ft. Worth, TX 76102		<sup>2</sup> OGRID Number 173772
		<sup>3</sup> API Number 30-025-34539
<sup>4</sup> Property Code 23907	<sup>5</sup> Property Name State 28	<sup>6</sup> Well No. 2

<sup>7</sup> Surface Location

UL or lot no.	Section	Township	Range	Lot Idn	Feet from the	North/South line	Feet from the	East/West line	County
N	28	21S	35E		785	SOUTH	1980	WEST	LEA

<sup>8</sup> Proposed Bottom Hole Location If Different From Surface

UL or lot no.	Section	Township	Range	Lot Idn	Feet from the	North/South line	Feet from the	East/West line	County
<sup>9</sup> Proposed Pool 1 Gamma GAMMA RIDGE MORROW EAST					<sup>10</sup> Proposed Pool 2				

<sup>11</sup> Work Type Code N	<sup>12</sup> Well Type Code G	<sup>13</sup> Cable/Rotary R	<sup>14</sup> Lease Type Code S	<sup>15</sup> Ground Level Elevation 3626'
<sup>16</sup> Multiple No	<sup>17</sup> Proposed Depth 13,200'	<sup>18</sup> Formation MORROW SAND	<sup>19</sup> Contractor	<sup>20</sup> Spud Date 3-01-99

<sup>21</sup> Proposed Casing and Cement Program

Hole Size	Casing Size	Casing weight/foot	Setting Depth	Sacks of Cement	Estimated TOC
17 1/2"	13 3/8"	54.5#	1,150'	850	Surface
12 1/4"	9 5/8"	36# & 40#	5,600'	1670	Surface
8 3/4"	7"	23#	11,200'	1065	5,000'
6 1/8"	4 1/2"	11.6#	13,200'	250	10,700'

<sup>22</sup> Describe the proposed program. If this application is to DEEPEN or PLUG BACK give the data on the present productive zone and proposed new productive zone. Describe the blowout prevention program, if any. Use additional sheets if necessary.

Purpose to drill a Morrow well to 13,200'. Cement will be circulated to surface on 13 3/8", 9 5/8" casing. Plan to test significant shows and evaluate with adequate logging program. Completion or abandonment will be performed in accordance with prudent practices and regulatory requirements. See attached schematic of BOPs.

Permit Expires 1 Year From Approval  
Date Unless Drilling Underway

<sup>23</sup> I hereby certify that the information given above is true and complete to the best of my knowledge and belief.

Signature:

Printed name:

Paula Hale

Title:

Operations Analyst

Date:

12/03/98

Phone:

817/870-2601

OIL CONSERVATION DIVISION

Approved by:

Title:

Approval Date:

DEC 07 1998

Expiration Date:

Conditions of Approval:

Attached ☐

# C-101 Instructions

Measurements and dimensions are to be in feet/inches. Well locations will refer to the New Mexico Principal Meridian.

IF THIS IS AN AMENDED REPORT CHECK THE BOX LABELED "AMENDED REPORT" AT THE TOP OF THIS DOCUMENT.

program. Attach additional sheets if necessary.

23

The signature, printed name, and title of the person authorized to make this report. The date this report was signed and the telephone number to call for questions about this report.

- 1 Operator's OGRID number. If you do not have one it will be assigned and filled in by the District office.
- 2 Operator's name and address
- 3 API number of this well. If this is a new drill the OCD will assign the number and fill this in.
- 4 Property code. If this is a new property the OCD will assign the number and fill it in.
- 5 Property name that used to be called 'well name'
- 6 The number of this well on the property.
- 7 The surveyed location of this well New Mexico Principal Meridian NOTE: If the United States government survey designates a Lot Number for this location use that number in the 'UL or lot no.' box. Otherwise use the OCD Unit Letter.
- 8 The proposed bottom hole location of this well at TD
- 9 and 10 The proposed pool(s) to which this well is being drilled.
- 11 Work type code from the following table:

N	New well
E	Re-entry
D	Drill deeper
P	Plugback
A	Add a zone
- 12 Well type code from the following table:

O	Single oil completion
G	Single gas completion
M	Multiple completion
I	Injection well
S	SWD well
W	Water supply well
C	Carbon dioxide well
- 13 Cable or rotary drilling code

C	Propose to cable tool drill
R	Propose to rotary drill
- 14 Lease type code from the following table:

S	State
P	Private
- 15 Ground level elevation above sea level
- 16 Intend to multiple complete? Yes or No
- 17 Proposed total depth of this well
- 18 Geologic formation at TD
- 19 Name of the intended drilling company if known.
- 20 Anticipated spud date.
- 21 Proposed hole size ID inches, proposed casing OD inches, casing weight in pounds per foot, setting depth of the casing or depth and top of liner, proposed cementing volume, and estimated top of cement
- 22 Brief description of the proposed drilling program and BOP

DISTRICT I  
P.O. Box 1980, Hobbs, NM 88241-1980

DISTRICT II  
P.O. Drawer 80, Artesia, NM 88211-0719

DISTRICT III  
1000 Rio Brazos Rd., Aztec, NM 87410

DISTRICT IV  
P.O. BOX 2066, SANTA FE, N.M. 87504-2066

State of New Mexico  
Energy, Minerals and Natural Resources Department

Form C-102  
Revised February 10, 1994  
Submit to Appropriate District Office  
State Lease - 4 Copies  
Fee Lease - 3 Copies

OIL CONSERVATION DIVISION

P.O. Box 2088  
Santa Fe, New Mexico 87504-2088

☐ AMENDED REPORT

WELL LOCATION AND ACREAGE DEDICATION PLAT

API Number 30-025-34539	Pool Code 77690	Pool Name Ghama Gama Ridge Morrow East
Property Code 23907	Property Name STATE 28	Well Number 2
OGRID No. 173772	Operator Name RANGE PRODUCTION COMPANY	Elevation 3626'

Surface Location

UL or lot No.	Section	Township	Range	Lot Idn	Feet from the	North/South line	Feet from the	East/West line	County
N	28	21 S	35 E		785	SOUTH	1980	WEST	LEA

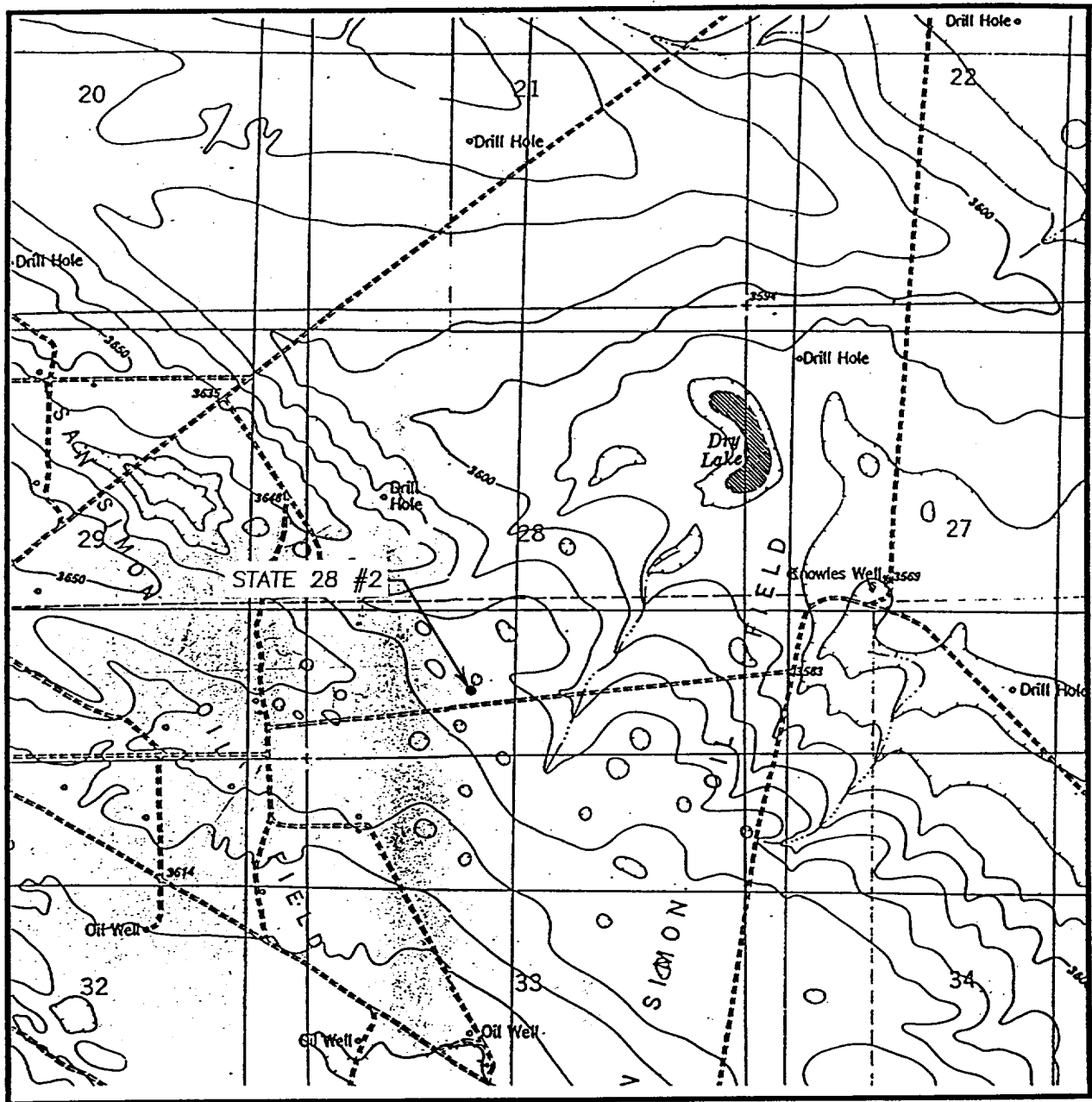
Bottom Hole Location If Different From Surface

UL or lot No.	Section	Township	Range	Lot Idn	Feet from the	North/South line	Feet from the	East/West line	County
Dedicated Acres 320	Joint or Infill N	Consolidation Code	Order No.						

NO ALLOWABLE WILL BE ASSIGNED TO THIS COMPLETION UNTIL ALL INTERESTS HAVE BEEN CONSOLIDATED  
OR A NON-STANDARD UNIT HAS BEEN APPROVED BY THE DIVISION

	<b>OPERATOR CERTIFICATION</b>  I hereby certify the the information contained heretr is true and complete to the best of my knowledge and belief.   Signature Paula Hale Printed Name Operations Analyst Title 12/03/98 Date	
	<b>SURVEYOR CERTIFICATION</b>  I hereby certify that the well location shown on this plat was plotted from field notes of actual surveys made by me or under my supervision, and that the same is true and correct to the best of my belief.  NOVEMBER 19, 1998 Date Surveyed Signature & Seal of Professional Surveyor  Certificate No. RONALD L. EIDSON 3239 GARY EIDSON 12641	

# LOCATION VERIFICATION MAP



SCALE: 1" = 2000'

CONTOUR INTERVAL - 10'

SEC. 28 TWP. 21-S RGE. 35-E

SURVEY N.M.P.M.

COUNTY LEA

DESCRIPTION 785' FSL & 1980' FWL

ELEVATION 3626'

OPERATOR RANGE PRODUCTION COMPANY

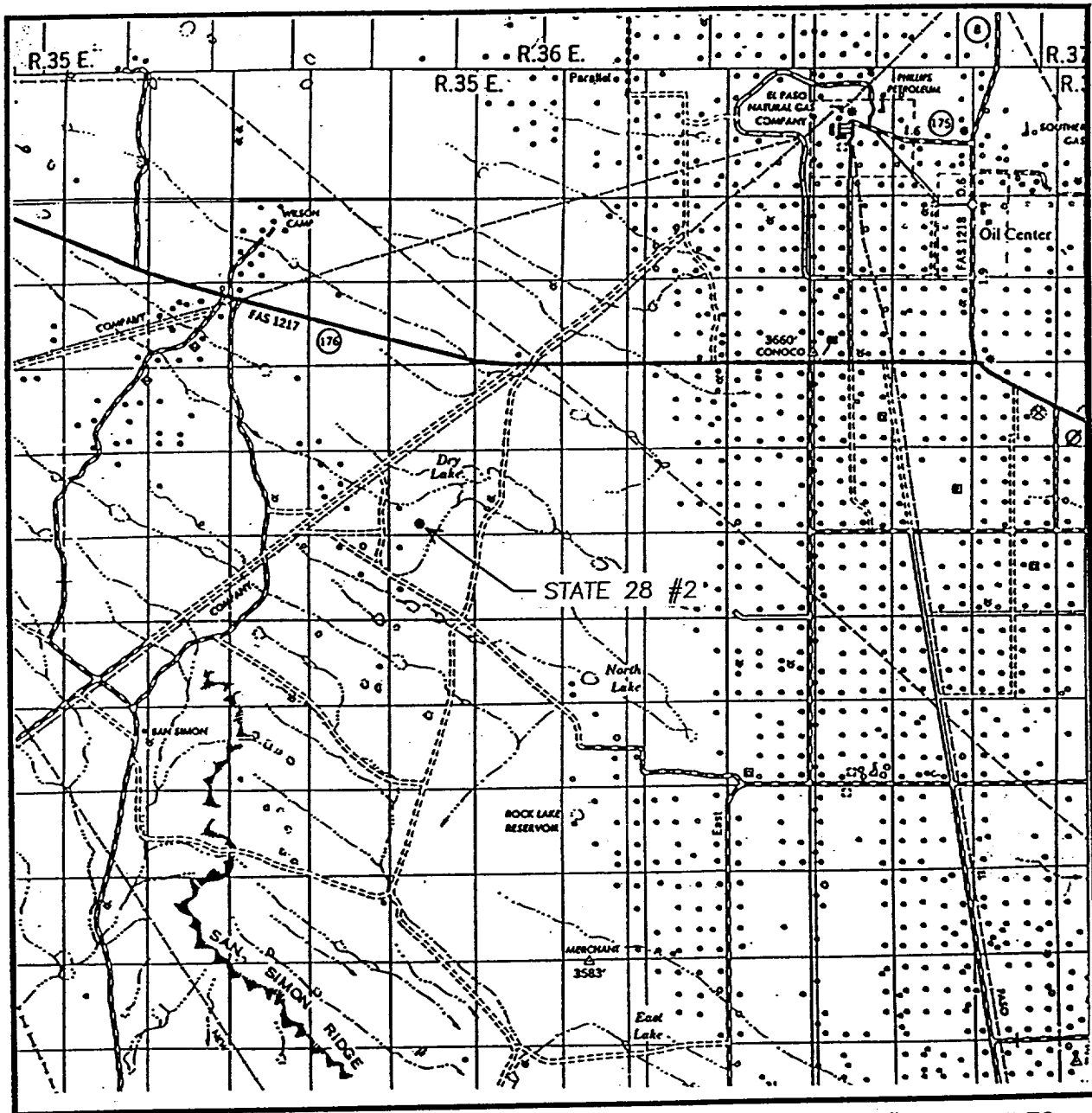
LEASE STATE 28

U.S.G.S. TOPOGRAPHIC MAP

OIL CENTER, SAN SIMON RANCH, NM

**JOHN WEST SURVEYING CO.**  
**HOBBS, NEW MEXICO**  
**(505) 393-3117**

# VICINITY MAP



SCALE: 1" = 2 MILES

SEC. 28 TWP. 21-S RGE. 35-E

SURVEY N.M.P.M.

COUNTY LEA

DESCRIPTION 785' FSL & 1980' FWL

ELEVATION 3626'

OPERATOR RANGE PRODUCTION COMPANY

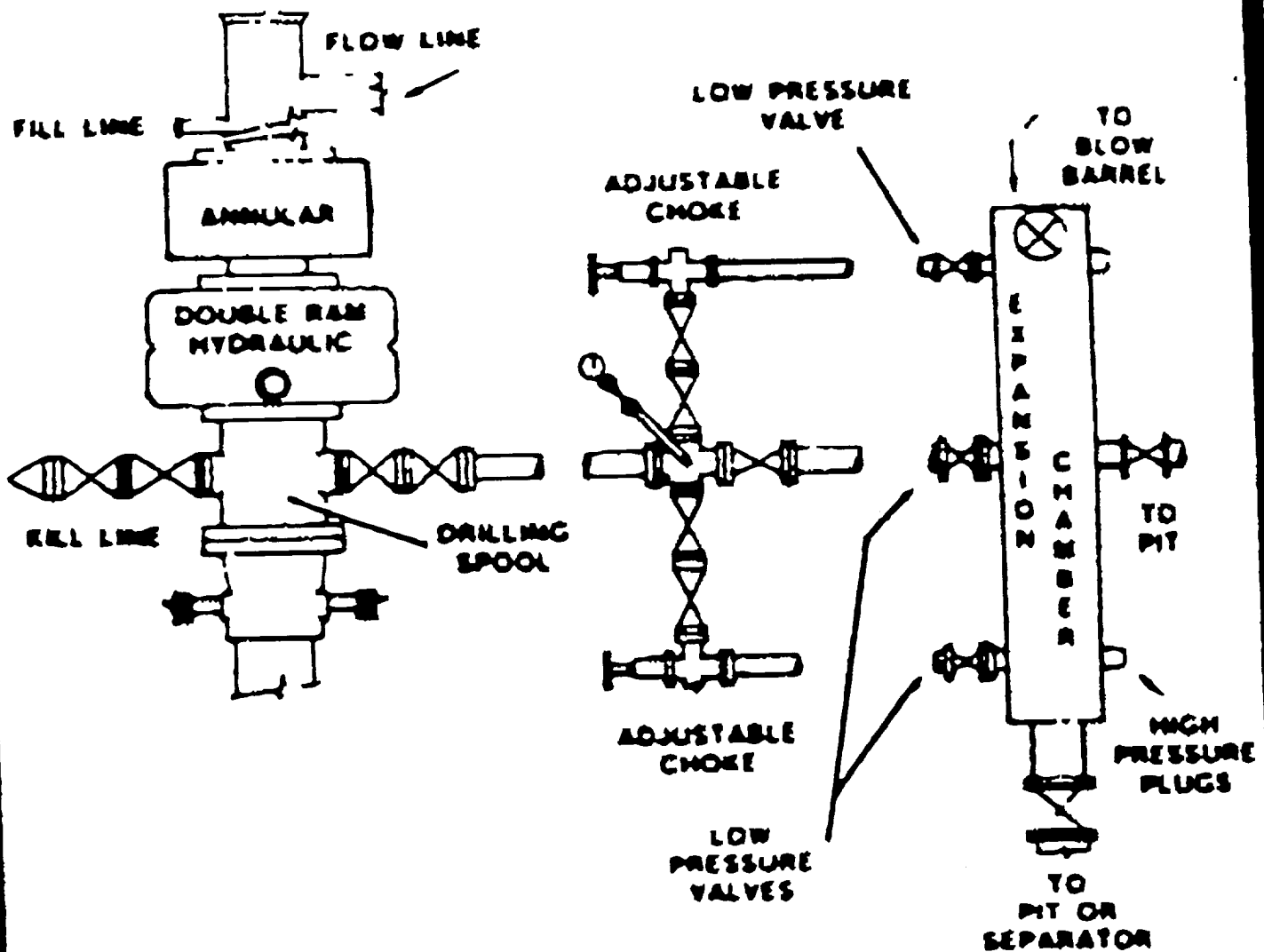
LEASE STATE 28

**JOHN WEST SURVEYING CO.**  
**HOBBS, NEW MEXICO**  
**(505) 393-3117**

# BLOWOUT PREVENTERS

One Shaffer LWS hydraulic double 11" x 5,000 p.s.i. One Hydril 11" x 5,000 p.s.i. Choke manifold 4" x 5,000 p.s.i. flanged connections. Kooimey Type 80, 7-station accumulator closing unit with remote control.

Identical set up for 10,000 p.s.i. equipment. Rams will be 10,000 p.s.i. and sized to match drill pipe diameter.



Standard Blowout Preventer Stack