

District I
PO Box 1980, Hobbs, NM 88241-1980

District II
811 South First, Artesia, NM 88210

District III
1000 Rio Brazos Rd., Aztec, NM 87410

District IV
2040 South Pacheco, Santa Fe, NM 87505

State of New Mexico
Energy, Minerals & Natural Resources Department

OIL CONSERVATION DIVISION
2040 South Pacheco
Santa Fe, NM 87505

Form C-101
Revised October 18, 1994
Instructions on back
Submit to Appropriate District Office
State Lease - 6 Copies
Fee Lease - 5 Copies

☐ AMENDED REPORT

APPLICATION FOR PERMIT TO DRILL, RE-ENTER, DEEPEN, PLUGBACK, OR ADD A ZONE

¹ Operator Name and Address BTA OIL PRODUCERS 104 SOUTH PECOS MIDLAND, TX 79701		² OGRID Number 003002
		³ API Number 30 - 025 - 35080
⁴ Property Code 26161	⁵ Property Name Wilson, 20004 JV-P	⁶ Well No. 1

⁷Surface Location

UL or lot no.	Section	Township	Range	Lot Idn	Feet from the	North/South line	Feet from the	East/West Line	County
C	26	21S	34E		990	North	1650	West	Lea

⁸Proposed Bottom Hole Location If Different From Surface

UL or lot no.	Section	Township	Range	Lot Idn	Feet from the	North/South line	Feet from the	East/West Line	County
⁹ Proposed Pool 1 Grama Ridge; Morrow, East (Gas)						¹⁰ Proposed Pool 2			
Pool Code 77690									

¹¹ Work Type Code N	¹² Well Type Code G	¹³ Cable/Rotary R	¹⁴ Lease Type Code S	¹⁵ Ground Level Elevation 3689
¹⁶ Multiple No	¹⁷ Proposed Depth 13400	¹⁸ Formation Morrow	¹⁹ Contractor McVay	²⁰ Spud Date 08-15-00

²¹Proposed Casing and Cement Program

Hole Size	Casing Size	Casing weight/foot	Setting Depth	Sacks of Cement	Estimated TOC
17-1/2"	13-3/8"	54.5#	1200'	1400	Surface
12-1/4"	9-5/8"	40#	5300'	1800	Surface
8-3/4"	7"	29#	11700'	800	5000'
6-1/8"	5" (liner)	18#	11300-13400'	250	11300'

²²Describe the proposed program. If this application is to DEEPEN or PLUG BACK give the data on the present productive zone and proposed new productive zone. Describe the blowout prevention program, if any. Use additional sheets if necessary.

BOP's on 9-5/8" casing and below 5,000 psi WP SRRA

Permit Expires 1 Year From Approval
Date Unless Drilling Underway

²³I hereby certify that the information given above is true and complete to the best of my knowledge and belief.

Signature:

Pam Inskeep

Printed name:

PAM INSKEEP

Title:

REGULATORY ADMINISTRATOR

Date:

Phone:

915/682-3753

OIL CONSERVATION DIVISION

Approved By:

Title:

Approval Date:

11/11/2000

Expiration Date:

Conditions of Approval:

Attached: ☐

5/2/00

AB myP



DISTRICT I
P.O. Box 1980, Hobbs, NM 88241-1980

State of New Mexico
Energy, Minerals and Natural Resources Department

Form C-102
Revised February 10, 1994
Submit to Appropriate District Office
State Lease - 4 Copies
Fee Lease - 3 Copies

DISTRICT II
P.O. Drawer DD, Artesia, NM 86211-0719

DISTRICT III
1000 Rio Brazos Rd., Aztec, NM 87410

DISTRICT IV
P.O. BOX 2088, SANTA FE, N.M. 87504-2088

OIL CONSERVATION DIVISION
P.O. Box 2088
Santa Fe, New Mexico 87504-2088

☐ AMENDED REPORT

WELL LOCATION AND ACREAGE DEDICATION PLAT

API Number 30-025-35080	Pool Code 77690	Pool Name Girama Ridge; Morrow East (GAS)
Property Code 26161	Property Name 20004 JV-P WILSON	Well Number 1
OGRID No. 003002	Operator Name BTA OIL PRODUCERS	Elevation 3689

Surface Location

UL or lot No. C	Section 26	Township 21 S	Range 34 E	Lot Idn	Feet from the 990	North/South line NORTH	Feet from the 1650	East/West line WEST	County LEA
--------------------	---------------	------------------	---------------	---------	----------------------	---------------------------	-----------------------	------------------------	---------------

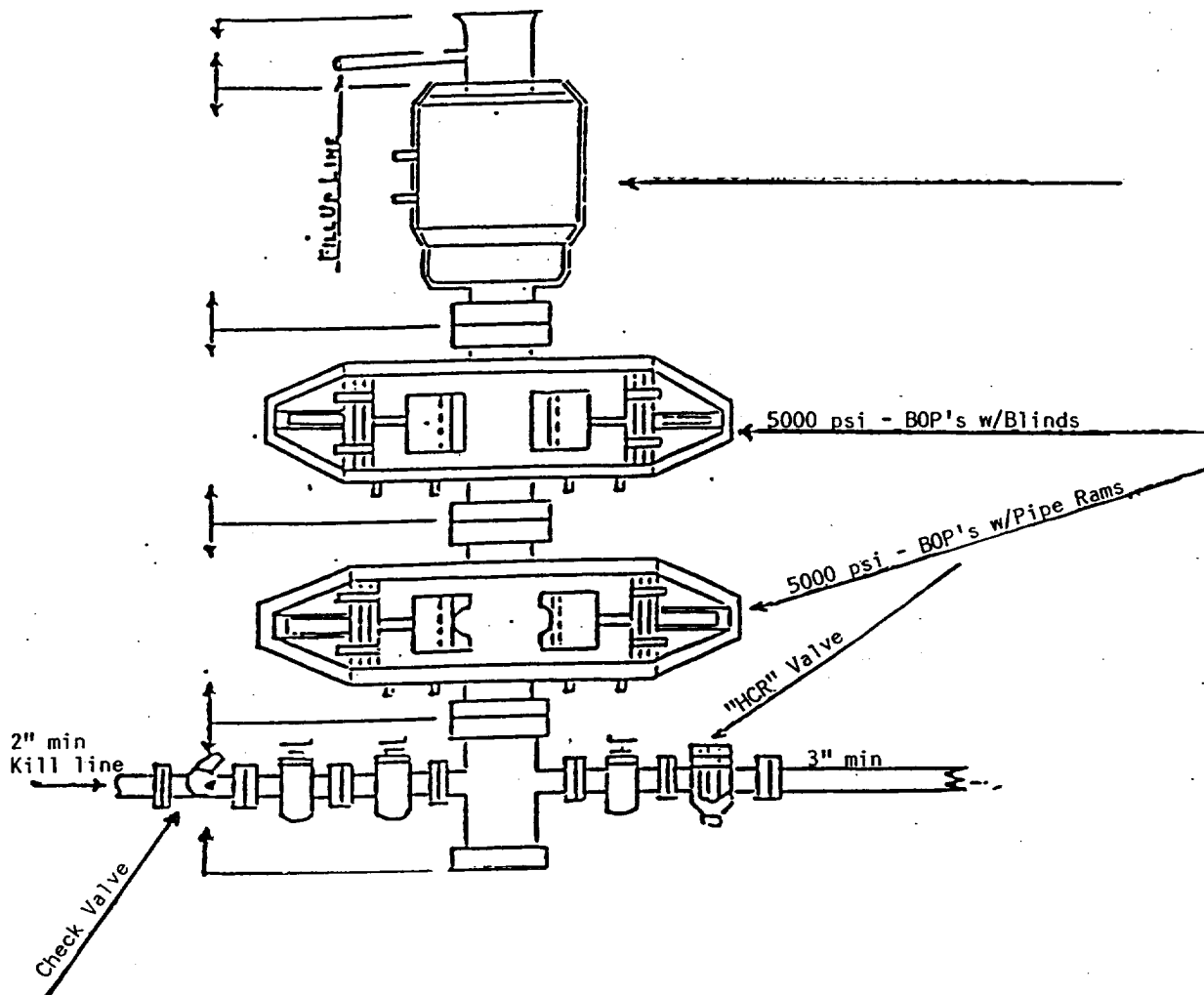
Bottom Hole Location If Different From Surface

UL or lot No.	Section	Township	Range	Lot Idn	Feet from the	North/South line	Feet from the	East/West line	County
Dedicated Acres 320	Joint or Infill	Consolidation Code		Order No.					

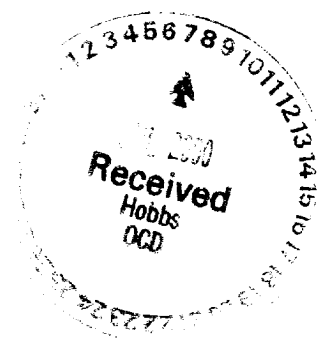
NO ALLOWABLE WILL BE ASSIGNED TO THIS COMPLETION UNTIL ALL INTERESTS HAVE BEEN CONSOLIDATED
OR A NON-STANDARD UNIT HAS BEEN APPROVED BY THE DIVISION

	OPERATOR CERTIFICATION I hereby certify the the information contained herein is true and complete to the best of my knowledge and belief. Pam Inskeep Signature Pam Inskeep Printed Name Reg. Administrator Title 7-6-2000 Date	
	SURVEYOR CERTIFICATION I hereby certify that the well location shown on this plat was plotted from field notes of actual surveys made by me or under my supervision, and that the same is true and correct to the best of my belief. JUNE 30, 2000 Date Surveyed Signature & Seal of Professional Surveyor NEW MEXICO Gary McDonald 00-11-0838 Certificate No. RONALD G. EDSON 3239 GARY EDSON 12641 WILSON McDONALD 12185	

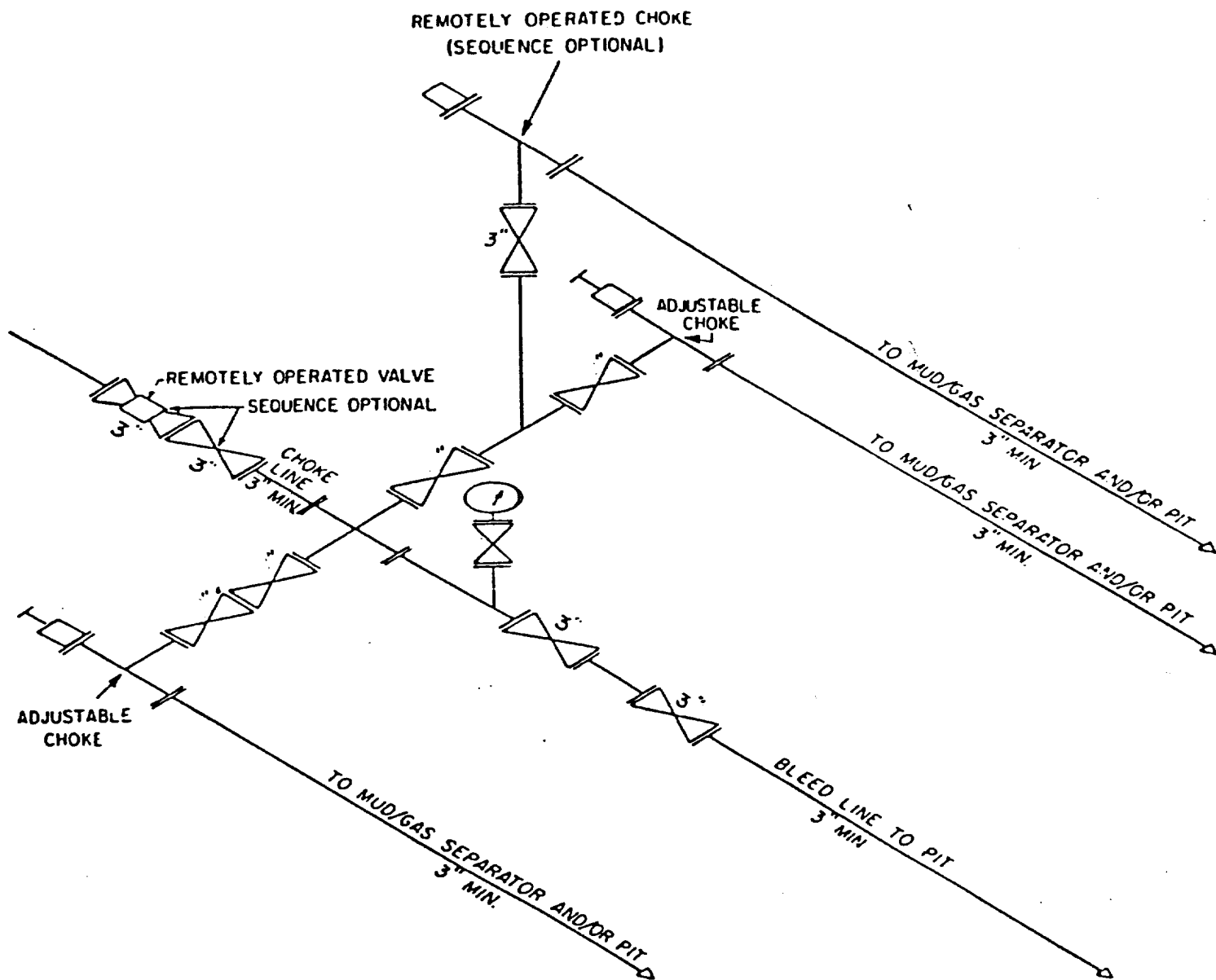




BTA OIL PRODUCERS
 #1, Wilson, 20004 JV-P
 990' FNL & 1650' FWL
 Sec. 26, T21S, R34E
 Lea County, NM



5 M CHOKE MANIFOLD EQUIPMENT



CHOKE MANIFOLD EQUIPMENT — CONFIGURATION MAY VARY

BTA OIL PRODUCERS

#1, Wilson, 20004 JV-P

990' FNL & 1650' FWL

Sec. 26, T21S, R34E

Lea County, NM

